



**Spelthorne  
Together**

Safer Stronger  
Children and Young People  
Health and Wellbeing  
Economic Development  
Housing, Infrastructure and  
Environment

# Spelthorne Community Plan

2005 - 2015 updated 2010



**e-mail:** [partnerships@spelthorne.gov.uk](mailto:partnerships@spelthorne.gov.uk)

**Phone:** 01784 446421

**Address:** Partnership Liaison Officer, Spelthorne Borough Council,  
Council Offices, Knowle Green, Staines, TW18 1XB

[www.spelweb.com](http://www.spelweb.com)



## Spelthorne Together



**Our vision: To make Spelthorne a safe, healthy, inclusive, prosperous and sustainable community.**

Spelthorne's second Community Plan, published in 2005, describes the outcomes partners will strive to achieve by 2015. A challenging vision for the future of Spelthorne provides a focus for the work of a wide range of partners to improve Spelthorne as an area to live, work, travel and take part in leisure activities. The Community Plan continues to be delivered by the partners working in collaboration under the umbrella of Spelthorne Together (Local Strategic Partnership).

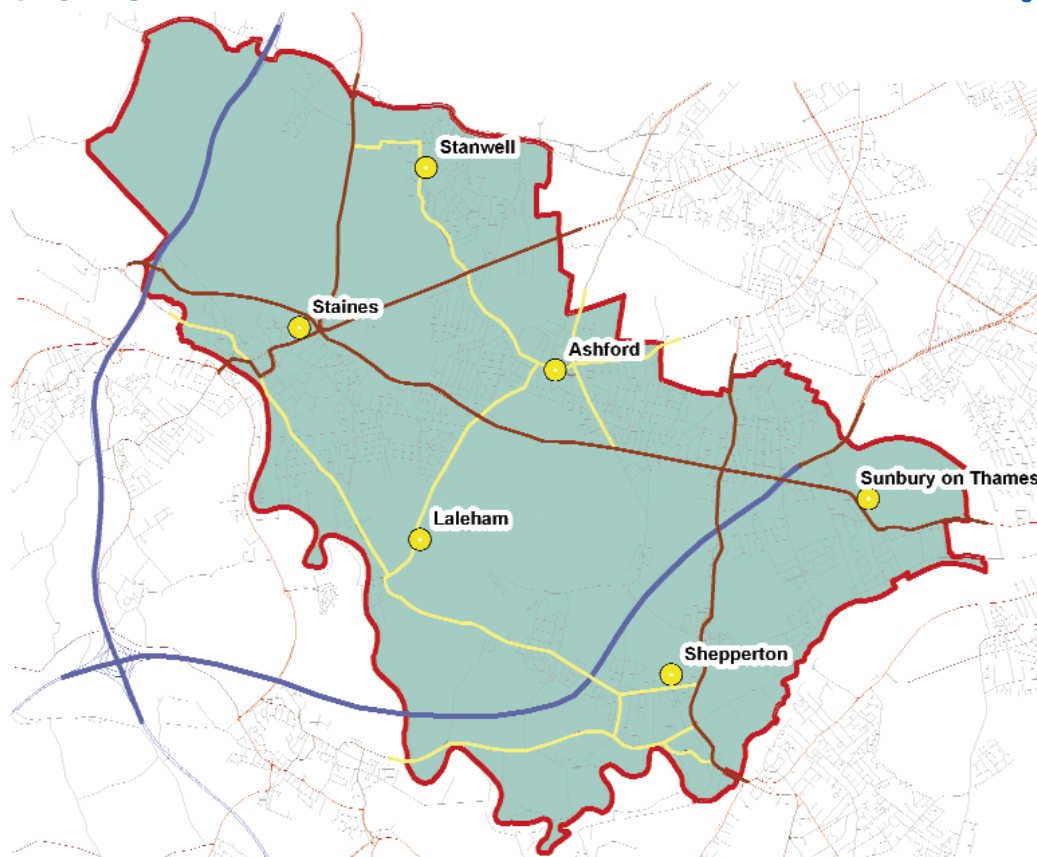
This second revision of the original plan has been agreed with the Spelthorne community after wide consultation and sets out the next steps as we all work together to achieve the vision of Spelthorne. This is an ambitious initiative that will be achieved through the partners' and the community's willingness to work together. To date, significant progress has been made as a direct result of joint working. There is however, significantly more for us to accomplish; together we can make a real difference.



**Sue Robertson**

Chair, Spelthorne Together, September 2010

## Profile of Spelthorne



Map: reproduced from the Ordnance Survey mapping with the permission of the Controller of Her Majesty's Stationery Office © Crown copyright. Unauthorised reproduction infringes Crown copyright and may lead to prosecution or civil proceedings. Licence Number: 100024284.

The Borough of Spelthorne lies to the south west of London and is a relatively small borough, just six miles long and two and a half miles wide. It is densely populated and has five main urban areas - Ashford, Shepperton, Staines, Stanwell and Sunbury. Adjacent to the northern boundary is Heathrow Airport, while the River Thames marks the southern boundary.

Outside the urban areas, the majority of the area is designated as Green Belt. This area includes five major water supply reservoirs and Staines Common, which is a Site of Special Scientific interest. Risk of flooding is significant.

The population of approximately 92,000 (2006) live in about 39,500 dwellings of which only 12% are social housing. The mix of dwellings and density makes Spelthorne more similar to the adjoining London boroughs than the rest of Surrey. The population is relatively older than average with a projection that it will get older over the next 20 years. The ethnic minority population was 5.7% at the 2001 census and is likely to have increased by the 2011 census.

The borough is economically active although its unemployment claimant count of 2.2% (July 2010) is the highest in Surrey. It is adjacent to some major employment centres especially Heathrow Airport, which employs more than 3,900 Spelthorne residents (March 2010).

There are small pockets of deprivation in the borough in parts of Stanwell, Ashford, Staines and Sunbury Common. The main issues in these areas are low income, unemployment, poor health, poor educational attainment and higher levels of crime and disorder. Spelthorne Together has made Stanwell a key priority - see Page 5 for further details.

Recreational facilities include two leisure centres, three golf courses, over 80 parks and open spaces, water sports and Kempton Park racecourse. Staines is the major shopping centre, which has been pedestrianised and significantly modernised. Further developments in the town centre are planned over the next few years.

## What is a sustainable community strategy?

A community strategy should aim to enhance the quality of life of local communities and contribute to the achievement of sustainable development through action to improve the economic, social and environmental well-being of the area and its inhabitants.

It will have four key components:

- a long term vision for the area focusing on the outcomes that are to be achieved
- an action plan identifying shorter term priorities and activities that will contribute to the achievement of the long term outcomes
- a shared commitment to implement the action plan and proposals for doing so
- arrangements for monitoring the implementation of the action plan, for periodically reviewing the community strategy and for reporting progress to local communities.”\*

## How the Partnership is organised

Spelthorne Together has taken its 2005 – 2015 strategy and this second update to reflect the current needs of the Borough.

The five themes have been identified through consultation with the community and reflect the countywide Surrey Sustainable Community Strategy. Each theme has agreed three key priorities to ensure that the long-term vision is focussed on the outcomes that are manageable and more importantly, achievable. These outcomes are reflected in the action plans, which can be found online at [www.spelweb.com](http://www.spelweb.com)

The Partners are committed to the work of Spelthorne Together and this is demonstrated by membership of the executive, where each body is represented by a senior member of staff. *See page 12 for membership.*

In addition to the five themes the Assembly has agreed to two other key priorities: Stanwell New Start and NI4.

\* Preparing community strategies: government guidance. DCLG Crown Copyright.

## How the Partnership is organised

The Partnership is led by an Executive, which sets the strategic direction for the Partnership, and oversees the work of the theme groups, which carry out the action plan.

The five theme groups are as follows:

- **Safer Stronger**
- **Children and Young People**
- **Health and Well Being**
- **Economic Development**
- **Housing, Infrastructure and Environment**

## Annual Assembly

The annual Assembly continues to be a regular and key element of Spelthorne Together, bringing together local organisations and local people to discuss the work of the Partnership, identifying what issues need attention and helping set priorities for the forthcoming year.

The 2009 Assembly attracted more than 120 delegates and agreed new priorities for each of the five theme groups. The full report of the Assembly can be found on [http://www.spelthorne.gov.uk/cou\\_assembly\\_report\\_2009](http://www.spelthorne.gov.uk/cou_assembly_report_2009)

## Stanwell New Start

Stanwell New Start is a major regeneration project which will include:

- The replacement of post-war housing with more than 360 new homes built to Decent Homes standards. Lead partners: A2Dominion and Spelthorne Borough Council.
- A new health and community centre. Lead partners: Spelthorne Borough Council; Surrey County Council; NHS Surrey; GPs; Ashley House
- A new children's centre. Lead partners: Surrey Care Trust
- A vocational learning skills centre. Lead partners: Surrey Care Trust

Stanwell has been designated a Priority Place - one of four in Surrey identified as high need areas of the county based on national, regional and locally validated data sources. The work to deliver county-wide and local priorities means that these areas will be subject to multiple interventions by countywide and local partners. To maximise impact the Surrey Strategic Partnership recognises the benefits of coordinating work in these places.

## NI4

Since the previous revision of the Community Plan, Spelthorne Together has taken on an additional priority – for which the Executive is taking the lead.

The Government aims to build communities where individuals are empowered to make a difference both to their own lives and to the area in which they live.

A key indicator of community empowerment is the extent to which people feel able to influence decisions affecting their local area. This is National Indicator 4 (NI4).

An increasing amount of community involvement is being commissioned and encouraged by partners, as a way of uplifting NI4.

Examples of this at work in Spelthorne include:

- Community involvement in Stanwell New Start, specifically location and use of open spaces and social/leisure facilities
- Public consultation on restructure of the police and fire service provision in the borough
- Consultation on revision of bus services
- Public consultation on Ashford and St. Peter's Hospital becoming a Foundation Trust
- Participatory grants scheme – where £10,000 set aside for community-commissioned projects is currently being spent as a direct result of what people have asked for. An open vote on spending £1,000 of this grant is a feature of the 2010 Assembly.

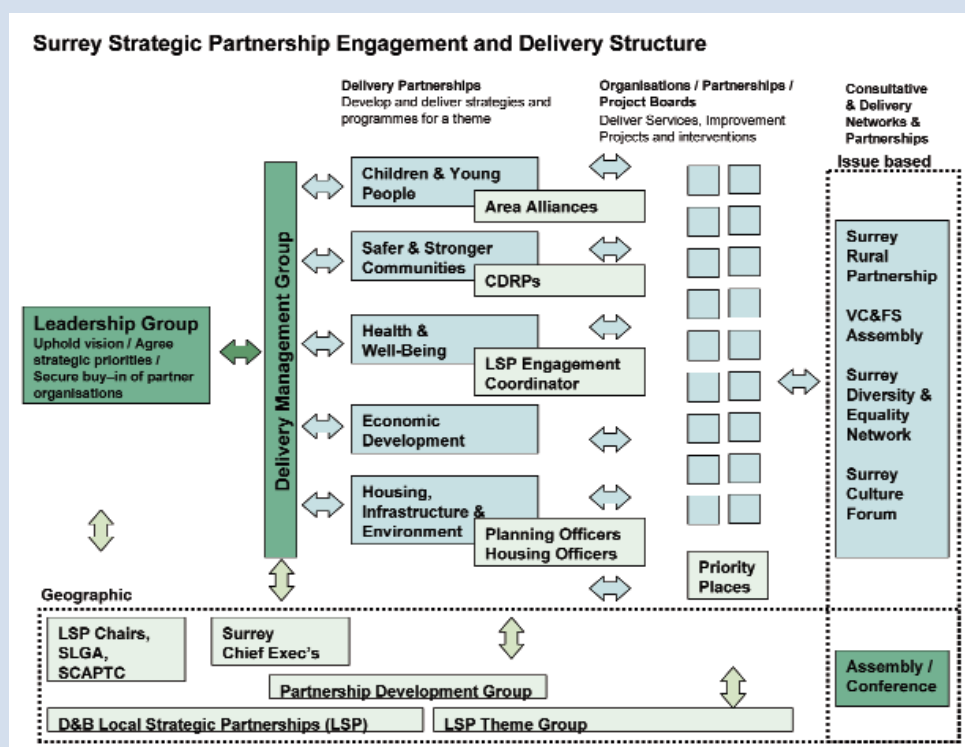
## Links to Surrey County Sustainable Community Strategy

The Surrey Strategic Partnership (SSP) is the countywide LSP and brings together key organisations from the public, private and voluntary, community and faith sectors across Surrey to work for the benefit of the county. Spelthorne LSP and Spelthorne Borough Council are members of the SSP.

The SSP has agreed a Partnership Plan 2010 - 2020: Standing Up for Surrey. This plan which sets out the Partnership's goals and plans for how we will work together to make Surrey a better place to live, work and do business in. It is based upon what local people have told us is important to them and how we think Surrey needs to respond to the significant changes that are happening in the world. The Partnership Plan fulfils the requirements of the Local Government Act 2000 for Surrey County Council and partners to prepare a Sustainable Community Strategy for the county.

The Partnership Plan includes five key challenges that partners will tackle together to make the county remain one of the most attractive places in England, and ten priorities where partners have agreed to work together to make a difference to the lives of people in Surrey. The Partnership Plan identifies where these ten priorities overlap with local district/ borough wide priorities and there is a considerable match between the vision and priorities of Spelthorne Together and the SSP.

The SSP has agreed that in order to deliver real benefits, one of its key strategies is to focus on the joint local delivery of services and interventions in specific neighbourhoods known as 'Priority Places'. Four areas were identified based on national, regional and locally validated data sources, such as the Joint Strategic Needs Assessment (JSNA) and the 'Heatmaps' developed by Surrey County Council. These places are characterised by poor outcomes for local people across a range of indicators.



One of the four priority places is Stanwell in Spelthorne and partners have developed an action plan aiming to:

- make a long term and sustainable improvement in outcomes for the people living in Stanwell
- build stronger and more self-reliant communities
- pilot better ways of working together locally that can then be rolled out to other places.

The work of the SSP is guided by the Leadership Group and delivered through a small Management Group and the five thematic partnerships.

You can find out more about the SSP from the SSP Partnership Support Team – [strategic.partnership@surreycc.gov.uk](mailto:strategic.partnership@surreycc.gov.uk) or 020 8541 7406.



Executive  
Safer Stronger  
Children and Young People  
Health and Wellbeing  
Economic Development  
Housing, Infrastructure and Environment

## Safer Stronger

# Our aim is to build a safer community

The Safer Spelthorne theme is led by the Spelthorne Safer Stronger Partnership (nationally known as the Community Safety Partnership), which was created by the Crime and Disorder Act 1998 to bring together statutory bodies to tackle crime, anti-social behaviour, behaviour that adversely affects the local environment and substance misuse (including drugs & alcohol) at a local level. Statutory Partner agencies are Surrey Police, NHS Surrey, Surrey Fire and Rescue Service, Surrey Police Authority, Surrey & Sussex Probation Trust, Spelthorne Borough Council and Surrey County Council. Other non-statutory members include Youth Justice, Prison service, A2 Dominion Housing, the business and the voluntary sector.

The Partnership undertakes a yearly strategic assessment and from this identifies its priorities for the coming year based on information, and intelligence provided by its member bodies, and consultation with the wider general public. From this, a plan is drawn up and through funding supplied by the partners and the Home Office; projects are carried out to help deliver those priorities.

We will achieve our aim by working together on three key priorities:

**1** To reduce crime

**2** To reduce antisocial behaviour

**3** To reduce re-offending

By working towards these priorities, we aim to increase confidence and reassurance.

Over the coming year the Partnership will deliver a concise action plan developed to best tackle the above priorities and improve the quality of life. During the period 1.4.09 – 31.3.10 there were 87 fewer house burglaries (-18.5%); 197 fewer incidents of criminal damage (-12%); 61 more incidents of theft (+4%); 149 fewer car crimes (-18%) and 296 fewer reports of anti-social behaviour (-4.5%).

It is our intention to continue that trend and at the same time help to build a stronger community through enhancing our links and involvement with the voluntary and community sector as well as local representative groups.

Our Partnership Action Days (PAD) have been revamped and we will deliver a minimum of four times each financial year.

To find out more about our performance and action plans please visit

[http://www.spelthorne.gov.uk/community\\_learning/communitysafety/sssp.htm](http://www.spelthorne.gov.uk/community_learning/communitysafety/sssp.htm)



## Children and Young People

**Our aim is to involve all young people so that they are engaged and given every opportunity to succeed**

The aim of the group is to improve opportunities for children and young people in Spelthorne and to engage and involve them in decision making.

The Children and Young People's Partnership (CYPP) acts as the group for this theme and consists of statutory agencies, voluntary and the faith sectors.

Linked to the CYPP is the Spelthorne professional youth worker forum (the getting things done group) and the junior and youth councils.

The partnership is also involved in linking in with "Every Child Matters" report and Surrey Alliance

There are some current issues facing Spelthorne, which are:

- perception of young people and the fear of crime
- pressure on voluntary sector through lack of volunteers.
- funding for youth services provision.

We will achieve our aim by working together on three key priorities:

**1** Places to go (be healthy and enjoy and achieve) and maximise the opportunities for travel

**2** Safety (be safe)

**3** Information (healthy, safe, enjoy and achieve, positive contribution)

The new Youth Strategy will co-ordinate the work on these priorities and will include projects such as the annual Spelthorne Youth Awards, the Live and Direct music events and the creation of a new website for young people.

Full details of the work we will do and the targets we have set ourselves are contained in detailed action plans which can be found online at [www.spelweb.com](http://www.spelweb.com)



## Health and Well Being

# Our aim is to improve health and well being with access to appropriate services for everyone

The aim is to work in partnership to improve the health and well-being of the Spelthorne community. Consultation with service users and carers informs the service developments.

Partners include Surrey Primary Care Trust, Ashford and St Peter's Hospitals, Age Concern, Community Care Forums, the Borough and County Councils, Surrey and Borders Foundation Trust, GP cluster and the voluntary sector including Voluntary Action in Spelthorne.

The main focus for the group will be the top three priorities. Lead officers have been identified to bring together partner organisations representatives to work together to support and develop services to meet the needs.

We will achieve our aim by working together on three key priorities:

**1** To increase awareness of breast cancer and the uptake of screening

**2** To improve the long-term health of the local population by reducing hazardous drinking

**3** To improve the mental health and well-being of the Spelthorne population

Outcomes we aim to achieve:

- *Breast cancer* - to improve health outcomes for the women of Spelthorne
- *Alcohol* - to improve long-term health; reduce alcohol-related anti-social behaviour
- *Mental health* - combat loneliness and social isolation, stress and depression. We will begin by looking at the needs of older people, building on work already done and then at the needs of younger people.

An Older People's strategy has been developed and work on this theme continues. We will also continue to promote awareness of carers' rights and carer-friendly employment practice.

Full details of the work we will do and the targets we have set ourselves are contained in detailed action plans which can be found online at [www.spelweb.com](http://www.spelweb.com)



Executive  
Safer Stronger  
Children and Young People  
Health and Wellbeing  
Economic Development  
Housing, Infrastructure and Environment

## Economic Development

# Our aim is to support and develop opportunities for businesses in the borough to survive and thrive

The Economic Development Theme Group advises Spelthorne Together on the economic development content of the Community Plan and the Local Area Agreement and supports their delivery.

The membership of the group reflects the issues within its remit and includes representatives from: Economic Development: Business Link, Borough and County Councillors and Officers, Chambers of Commerce, Business Community, Surrey Lifelong Learning Partnership, Jobcentre Plus

We will achieve our aim by working together on three key priorities:

**1** Increase the numbers of visitors from outside the borough

**2** Develop the economic potential of the River Thames

**3** Promote the local economy

The purpose of the Economic Development Group is to provide a forum in which partners can work together to plan services and programmes and oversee their delivery. These activities address a range of issues that aim to transform the local economy:

Supporting initiatives leading to business innovation and productivity gains;

Supporting entrepreneurship, inward investment and business development initiatives; lobbying for investment in local infrastructure

Supporting the sustainable economic development of Spelthorne

Enhance the attraction of towns and other centres in the borough as thriving places to visit, shop and establish new enterprises

Increase the number of students leaving schools and colleges with skills and academic and vocational qualifications that meet business needs.

Develop the wider role of schools and colleges and their focus on community and adult learning

Full details of the work we will do particularly through the Spelthorne Business Forum and HOW TO DO BUSINESS WITH THE COUNCIL can be found online at [http://www.spelthorne.gov.uk/business\\_and\\_advice.htm](http://www.spelthorne.gov.uk/business_and_advice.htm)



## Housing, Infrastructure and Environment

**Our aim is to enable improvements to ensure Spelthorne is a place where people want to live, work and play**

This theme group wants to ensure that Spelthorne remains a place where people want to “be” in the future, by continuing to provide a quality environment for all.

This theme is responsible for bringing together partner agencies to develop and implement a plan to reduce waste, improve housing, improve the local environment and provide an efficient transport network within the borough. Together this theme group hopes to take measures to improve the quality of life for Spelthorne residents.

We will achieve our aim by working together on three key priorities:

- 1** Reducing waste generated by Spelthorne households
- 2** Ensuring a ‘decent’ home for all in Spelthorne
- 3** Providing a safe, efficient and affordable transport system for all

The overall aim of our priorities is improving the Spelthorne physical and natural environment in which we live.

We have set targets to help achieve these priorities. These include ensuring sufficient affordable housing is built to meet our needs, and that 40% of household waste is recycled or composted. We are also committed to implementing town regeneration schemes in Ashford, Sunbury and Shepperton and addressing issues of congestion in Staines.

Full details of the work we do and the targets we have set ourselves are contained in detailed action plans which can be found online at [www.spelweb.com](http://www.spelweb.com)

## Membership of Spelthorne Together



### The following organisations are on the Executive:

- A2Dominion Housing Group
- Ashford & St. Peters Hospitals NHS Trust
- BP International Ltd, Sunbury
- Brooklands College
- Community representative - Staines, Laleham, Ashford
- Community representative - Shepperton, Sunbury, Halliford, Charlton, Littleton
- Community representative - Stanwell, Stanwell Moor
- Faith groups representative
- Government Office for the South East
- Surrey Primary Care Trust
- Spelthorne Borough Council
- Spelthorne Confederation of Schools
- Spelthorne Youth Council
- Surrey Chambers of Commerce – Spelthorne Region
- Surrey County Council
- Surrey Fire and Rescue Service
- Surrey Police
- Voluntary sector - Age Concern Spelthorne
- Voluntary sector - Voluntary Action in Spelthorne
- Voluntary sector - Citizens' Advice Bureau
- The Chair of Spelthorne Business Forum
- The Chairs of each of the five theme groups

membership