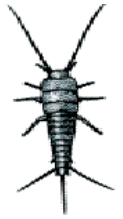


Silver Fish



Description

- The silver fish is approximately 12 mm (1/2 an inch) in length
- It is of a silvery colour with three distinct spikes at its rear end
- It is found where conditions are moist and favours kitchens, larders, bathrooms and basements and beneath household appliances, eg, baths, sinks, wash-hand basins etc.
- They can live in excess of five years



Lifestyle

- The eggs are laid in cracks and crevices
- The time taken for the adults to reach maturity varies from a few months to over a year depending on the temperature and humidity.
- They mainly come out at night to feed on crumbs and odd scraps of food and will thrive on the tiniest scraps of food.
- They are capable of digesting cellulose and may therefore attack books and documents.

Significance

These creatures have no public health significance

Control

- All of the infested food should be removed from the kitchen and disposed of.
- The affected area can be sprayed with an aerosol or insecticide powder which can be purchased from a chemist, hardware shop or garden centre. There are many different makes and brand names available. You should choose one designed for crawling insects and one that is designed for use inside the house. Read the instructions carefully and only apply as indicated.
- Insecticides should not be used close to potted plants or goldfish bowls.
- Powders and sprays should not be applied where pets or children can come into contact with them either directly, or by crawling over treated areas.
- Insecticides should not, generally, be used in kitchens or food storage areas