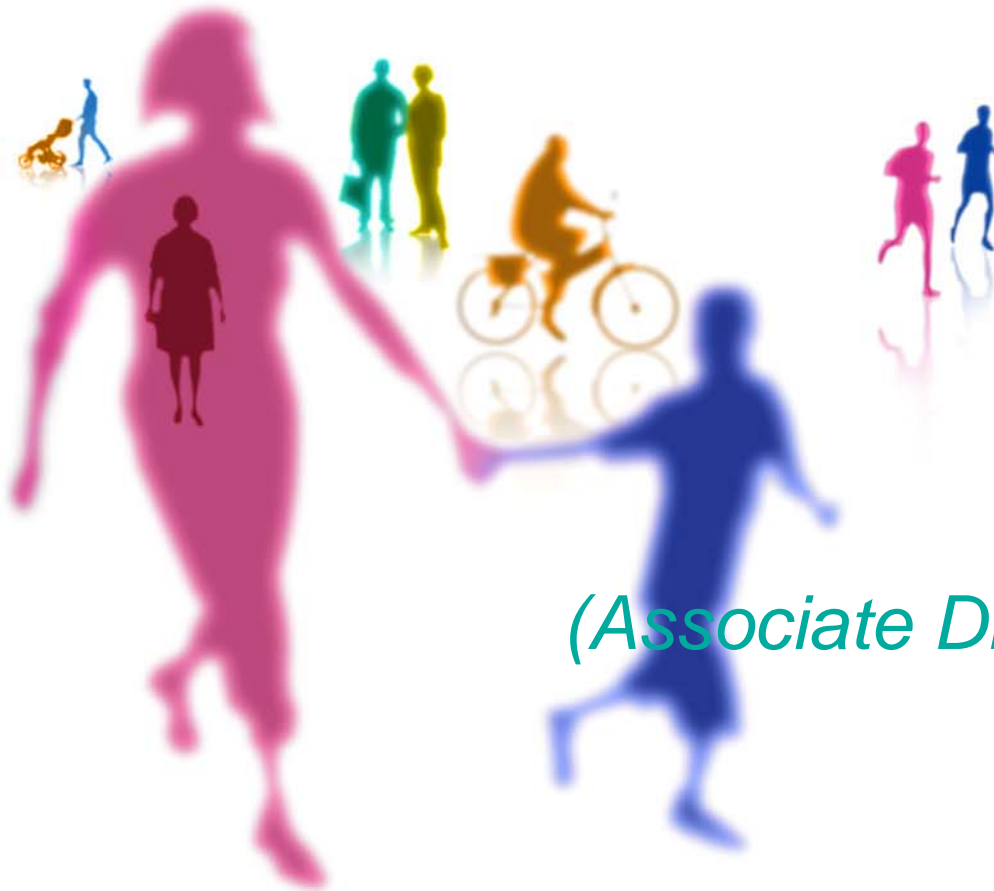


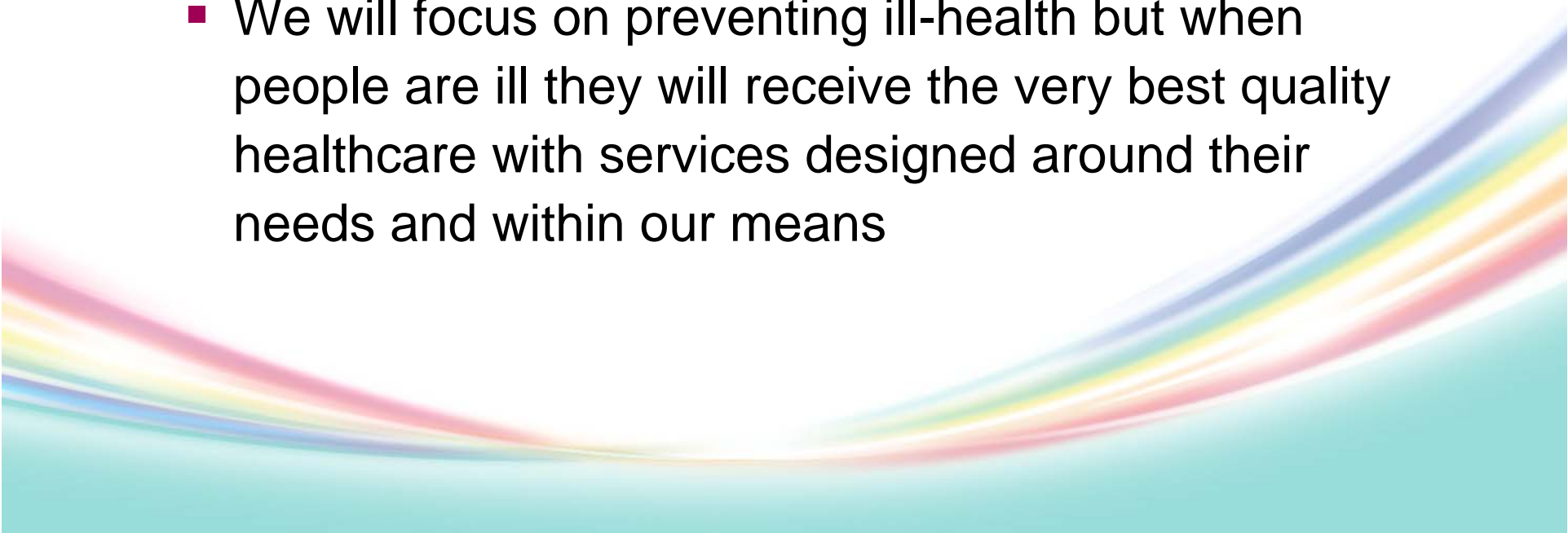
Surrey **NHS**  
Primary Care Trust



*Surrey PCT*  
*Helen Atkinson*  
*(Associate Director of Public Health)*

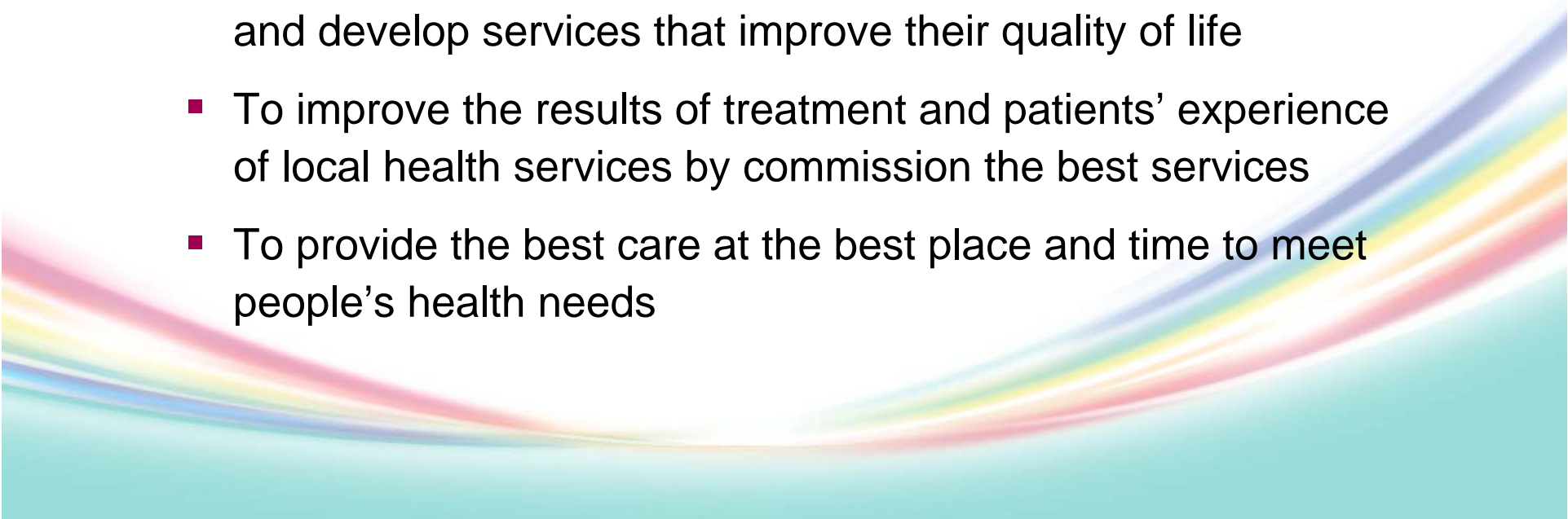
# *Surrey PCT Vision & Key Objectives*

- **Vision:**

- We will work with you to improve your health and well being and ensure that everyone in Surrey gets healthier
  - We will focus on preventing ill-health but when people are ill they will receive the very best quality healthcare with services designed around their needs and within our means
- 

# *Surrey PCT Vision & Key Objectives*

## ■ **Objectives:**

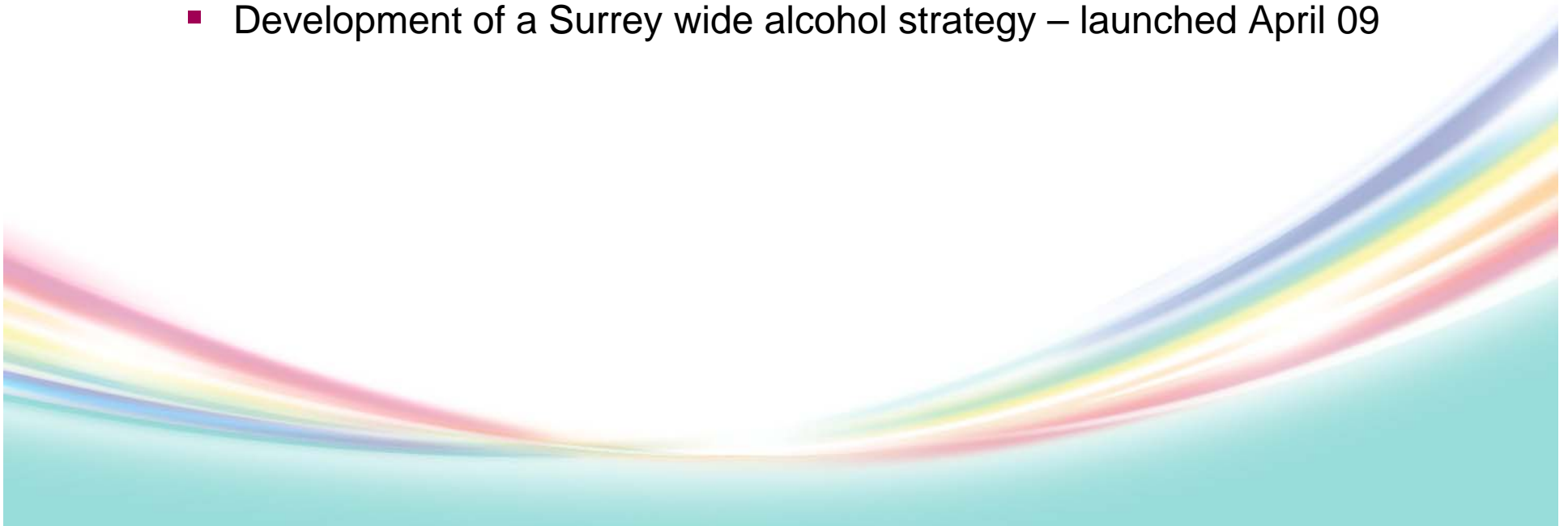
- To improve the health & quality of life of all our population reducing the gap in health differences
  - To improve the development and long term health of children and young people
  - To help and support people manage their ongoing conditions, and develop services that improve their quality of life
  - To improve the results of treatment and patients' experience of local health services by commission the best services
  - To provide the best care at the best place and time to meet people's health needs
- 

# *Role of Surrey PCT in reducing crime, disorder and anti-social behaviour*

- To help shape local action to tackle crime and the causes of crime
  - Particularly in relation to drugs and alcohol
- Why?
  - Effective crime and disorder strategies could impact on a range of national and local NHS priorities such as reducing health inequalities and improving quality of life
  - Crime & disorder costs the NHS in the region of 1.1-2.3 billion a year
  - Crime & disorder has a significant impact on health service provision

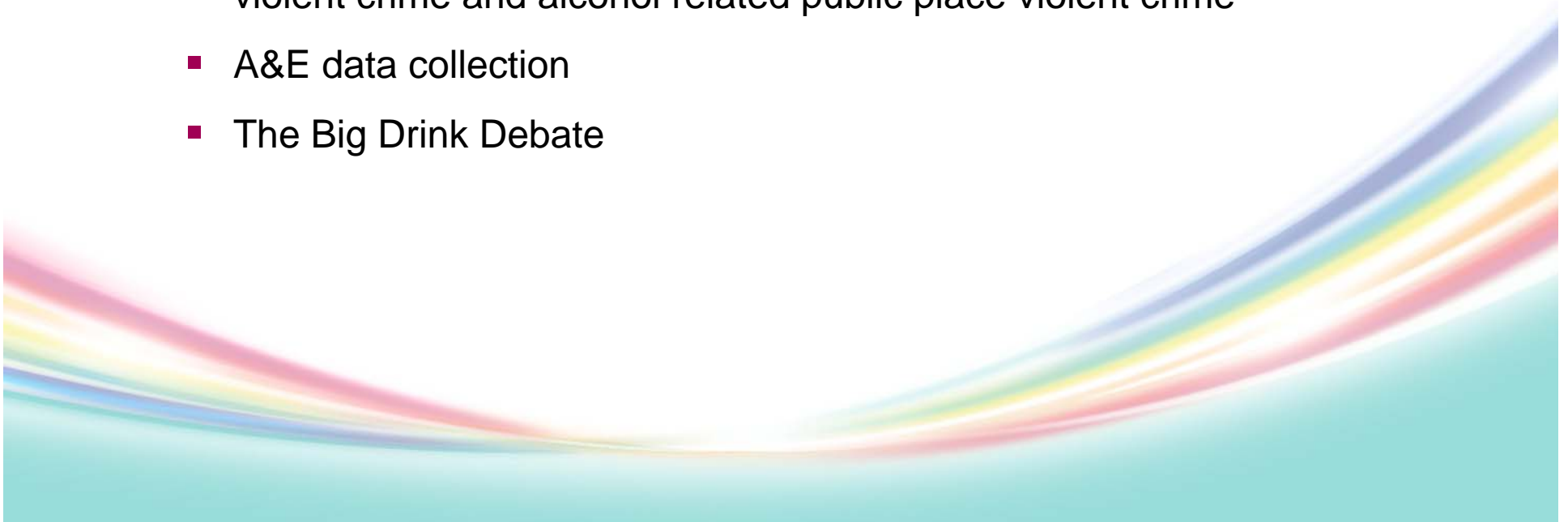
# *Current Priorities*

- Alcohol:
  - LAA target
  - Harm associated with alcohol – health, social, financial
  - Big Drink Debate
  - Development of a Surrey wide alcohol strategy – launched April 09



# *Local Schemes / Initiatives*

- Driven through the CDRP action plan
  
- Alcohol:
  - Under age sales
  - Development of initiatives to support reductions in alcohol related violent crime and alcohol related public place violent crime
  - A&E data collection
  - The Big Drink Debate



# *Future Plans*

- Alcohol strategy:
  - Joint commissioning framework for alcohol – ensure services available to meet needs
  - Support to local boroughs around reducing crime and anti-social behaviour associated with alcohol
  - Working with the industry to support responsible promotion of alcohol in localities

