



**Spelthorne
Together**

Safer Stronger Partnership

Spelthorne Safer Stronger Partnership

Strategic Assessment

1st October 2009 to 30th September 2010

Completed: 18th January 2011

Authors: Keith McGroary / Tim Kita

This document is owned by: Spelthorne Safer Stronger Partnership

AF34982

Acknowledgements

A thank-you goes to the following persons for their contribution to this 2011 Spelthorne Safer Stronger Partnership Strategic Assessment:

- Keith McGroary – Senior Community Safety Officer,
- Tim Kita – Head of Community Safety and Corporate Services
- Sarah Greenhalgh – Borough Police Inspector
- Simon Brough, Surrey Police Senior Analyst
- Nicola Smith – Trading Standards SCC
- Elizabeth Whiddett – Surrey Lifelong Learning Partnership
- Les Dodd – Station Manager, Surrey Fire & Rescue Service
- Victoria Jeffries – Surrey & Sussex Probation Service – NHS Surrey
- Kelly Morris– NHS Surrey
- Richard Carpenter – Surrey County Council
- Emma Forget – Surrey Police
- Lizzie Rae – Surrey County Council
- Stephen Buchanan – Surrey Police
- Tim Vamplew – Surrey County Council

Contents

Acknowledgements	Page 2
Executive Summary	Page 4
Findings and Recommendations	Page 4
Draft Key Priorities	Page 5
Introduction	Page 6
Purpose	Page 6
Methodology	Page 6
Data Sources	Page 7
Contextual Information	Page 8
Data capture and analysis	Page 8
Performance data	Page 10
Key crime types	Page 12
Burglary	Page 12
Acquisitive crime	Page 14
Criminal damage	Page 17
Vehicle crime	Page 17
Drug offences	Page 18
Alcohol	Page 20
Prolific & other priority offenders	Page 23
Repeat victims	Page 24
Domestic Abuse	Page 25
Anti-social behaviour	Page 26
Impact of CCTV	Page 27
Reassurance & Crime Trends	Page 29
Increase confidence & reassurance	Page 30
Spelthorne economy	Page 31
Public Perceptions & Experience	Page 34
Choosing Our Priorities	Page 35
Proposed key priorities 2010 – 13	Page 36
Current Action Plan	Page 36

Executive Summary

Key Findings and Recommendations

The total volume of crime has decreased by 5% in 2009 - 10 (the British Crime Survey shows 11% decrease) and in 2008 - 09 it had already decreased by 7% compared to 2007 - 08; this indicates that the strategies employed and Partnership mechanics are working effectively, although that is no excuse for complacency. Every category of crime has seen a decrease with the exception of acquisitive crime which saw a 9% increase; this is believed to be linked to the economic downturn.

An area for improvement has been identified in relation to the time period for which the data is supplied; currently there are two sets, one from August to July (Surrey Police data) and another October – September (all other data), they must both cover the same time period for the next assessment so that a more reliable picture of crime and disorder can be presented in future.

There have now been three years of a downward trend in reported crime as well as anti-social behaviour; the Partnership has been successful in contributing to that positive performance. Since the last assessment a new government has taken power and has identified 'localism' as a key driver over the next 5 years by engaging local communities to take some of the responsibility for managing their own affairs such as community halls, youth clubs and other similar amenities; it is recognised here that Community Safety Partnerships must have a significant role in the implementation of the Localism Bill.

The strategic assessment suggests that we are doing the right things and doing them well, as such our priorities for 2011 – 14 should remain broadly the same; however it is recommended that the current target of reassurance and confidence be removed and replaced with 'Implementation of relevant elements of the Localism Bill', also that violent crime is added to the basket of crimes most relevant to Spelthorne.

DRAFT KEY PRIORITIES

TO REDUCE: -

CRIME

(Those which are most significant to Spelthorne)

Dwelling Burglary
Violent Crime
General theft
Misuse of drugs & alcohol
Criminal damage including graffiti
Theft of and from Vehicles

ANTI-SOCIAL BEHAVIOUR

To reduce the level of reported anti-social behaviour
(Especially anti-social use of vehicles)

RE-OFFENDING

Re-offending rate of prolific and priority offenders
Repeat incidents of domestic violence

And

IMPLEMENTATION OF THE LOCALISM BILL (BIG SOCIETY)

To identify relevant elements for community safety and support their implementation

PREVENTION OF TERRORISM

Protect Against Terrorist Attacks
Building Resilience to Violent Extremism

Introduction

The statutory Community Safety Partnerships (CSP's) known locally as the Spelthorne Safer Stronger Partnership (SSSP) are required to produce an annual strategic assessment as part of their intelligence-led business process. The Assessment reviews historical data in terms of the levels of crime and disorder as well as partnership activity; additionally, it considers future threats to Spelthorne, so that we are best placed to use limited resources.

The Assessment also enables the Partnership to review progress of the existing Community Safety Plan and to plan for the next 3 year plan for 2011 - 14. The statutory members of the SSSP are: -

Spelthorne Borough Council

Surrey County Council

Surrey Police

Surrey Police Authority

Surrey Fire & Rescue Service

NHS Surrey

Surrey & Sussex Probation Service

The SSSP also consists of non-statutory members including the voluntary sector, housing associations and business groups; it is responsible for agreeing the 3 year strategy, targets and action plans

In the strategic assessment last year Spelthorne identified as its key priorities – *reducing* crime (most relevant to Spelthorne), anti-social behaviour, re-offending and *improving* confidence and providing greater reassurance. The action plan showing progress and activities against these is attached at the end of this document.

Purpose

This Assessment identifies current and possible future crimes, disorder and substance misuse issues using as much evidence and analysis as is available. Through such an Assessment the partners are better able to:

- Understand the patterns, trends and shifts relating to crime and disorder and substance misuse;
- Set clear and robust priorities
- Develop activity that is driven by reliable intelligence and meets the needs of the local community;
- Deploy resources effectively and present value for money; and
- Undertake six monthly reviews and plan activities based on a clear understanding of the issues and priorities.

When the Assessment is complete we can then produce a new plan and agree detailed actions to achieve our priorities for 2011 -14.

Methodology

Each partner shares a common objective in reducing crime and disorder and anti-social behaviour. They each deliver services in pursuit of this, and respond to calls for service from the public. In doing so, partners collect data in regard to the person making the request, the specific nature of that, and the response made. Delivering community safety is a collective responsibility; however, as each partner provides a different service they each have a unique, yet partial view of the nature of community safety in their area.

The Partnership has combined strategic information¹ from each partner and used specialists from each agency to provide a collective interpretation of the data and what it meant for residents and agencies. This picture has been used to build the partnership strategy and identify future information requirements.

Collectively, the Partnership holds vast quantities of information, so an initial scanning process was used to identify highest-level trends. Agencies were asked to submit annual quantitative data to highlight headline issues with initial interpretation of the nature of key changes over time.

These collective issues were then jointly assessed according to the risk each posed according the following variables:

- Community Concern
- Volume
- Trend
- Level of risk or harm to individuals/community
- Link to drugs misuse
- Link to alcohol misuse
- Other factors, including Political, Economic, Social, Technological, Environmental, Legal, Organisational, Media, Demographics.

This scanning and initial assessment process was used to identify and prioritise areas for further analysis, and to identify which agencies had information relevant to that issue. Representatives from these agencies were then invited to work together to produce a composite analysis of individual areas. The specific data and techniques used in this analytical process are detailed within each section.

Finally, each of these sections was brought together for an overall review and assessment to propose key priorities. This includes the identification of opportunities for further information collection and/or analysis; preventative measures, and areas for focused intervention.

Data Sources

- Surrey Police
- Borough Environmental Health Service
- Surrey Fire & Rescue Service
- NHS Surrey
- Drug Alcohol Action Team (DAAT)
- Government documents
- iQuanta (Home Office)
- Surrey Road Safety Partnership
- Surrey County Council
- Consultation at the annual Face the People event
- Survey

¹ Strategic information is that which describes aggregated information. It focuses upon themes and patterns evident through combining data, rather than sharing information of individuals or specific private locations.

CONTEXTUAL INFORMATION

The Borough of Spelthorne lies to the south west of London and is a relatively small Borough, just six miles long and two and a half miles wide. It is Surrey's most densely populated area with 90,500 residents (2006) with 40,000 dwellings of which only 12% are social housing. There are five main urban areas, Ashford, Shepperton, Staines, Stanwell and Sunbury; there are no physical boundaries between them. Adjacent to the northern boundary is Heathrow Airport whilst the River Thames marks the southern boundary. The mix of dwellings and density makes Spelthorne more similar to the adjoining London boroughs than the rest of Surrey. The population is relatively older than average with a projection that it will get older over the next 20 years. The ethnic minority population is 5.7%. The 2001 census shows that the population for the Borough is 90,390 of which 8% are the 16 – 25 age bracket and 17% are aged 65+

In terms of overall rank in the Index of Multiple Deprivation, (the higher the rank the less the deprivation), Spelthorne's overall rank is 284 of 354 local authorities in England. Therefore Spelthorne is amongst the 20% least deprived authorities nationally.

However there are variations within the borough with pockets of deprivation; of Surrey's 709 super output areas only 1 falls in England's most deprived 25% and that is in parts of Stanwell North, although less significant levels of deprivation exists in other small pockets throughout the borough. The main issues in these areas are low income, unemployment, poor health, poor educational attainment and higher levels of crime and disorder.

Outside the urban areas, the majority of the area (65%) is designated as Green Belt. This area includes five major water supply reservoirs and Staines Common, which is a Site of Special Scientific Interest. Risk of flooding is significant.

The Borough is economically active with just 2.7% unemployed and adjacent to it some major employment centres including Heathrow Airport, which alone employs over 4,800 Spelthorne residents. Recreational facilities include two leisure centres, three golf courses, over 80 parks and open spaces, water sports and Kempton Park racecourse. Staines is the major shopping centre, which has been pedestrianised and significantly modernised. Further developments in the town centre are planned over the next few years including significant housing developments, and a hotel.

There are 39 Councillors: 31 are Conservative and 8 Liberal Democrat. For Surrey County Council there are 7 Councillors, 4 are Conservative, 1 Labour and 2 Liberal Democrat.

Data Capture and Analysis

Data was collected from a number of different agencies, although the police provided the largest amount and were integral to the process of producing this strategic assessment. The police analyst provided a series of documents which provided a profile of the level of the problem concerning burglary, criminal damage, violent crime and anti-social behaviour. Further documents that were publicly available from other agencies such as the Drug & Alcohol Treatment profile for Spelthorne produced by the DAAT were also used to complement the police data.

Due to the unique economic climate the usual sources of crime and disorder data were supplemented by documents which examined the impact of the economic downturn on crime and disorder. This was for the purposes of including within the assessment a combination of historic data as would be normally expected but also data that takes into account significant occurrences that are highly likely to impact on the assessment of crime and disorder during

the life-span of the forthcoming Community Safety Plan; in this case it is the impact of government cutbacks, tax increases and potential job losses.

In order to illustrate trends over a period of time, Surrey police data has been used in conjunction with iQuanta and other data sets, which may not always cover the exact same time parameters; this is partially due to iQuanta sometimes lacking the flexibility to allow specific time-bound searches.

In September 2010 we held the annual **Face the People** event at the in Ashford. At the end of the forum, people were asked to select the three most important crime and disorder issues for their local areas; as there was a total of around 30 people at the event, it is acknowledged that this is not a representative sample, but does assist in allowing us to compare the statistical data against a very small sample of the community.

A score of 10 was awarded for the number 1 problem identified by the respondent and 1 point for the least important issue; the results can be found below

Anti Social Behaviour	110
House Burglary	101
Violent Crime	95
Domestic Violence	80
Vehicle Crime	77
Criminal Damage	76
Drugs	68
Anti-social use of vehicles	64
Theft	64
Other	17

A consultation exercise was also carried out during November & December where 128 people participated, part of the objective was to establish the top 3 priorities for the Borough²; the results were as follows: -

TOP PRIORITY	SECOND PRIORITY	THIRD PRIORITY
1. House Burglary (35%)	1. Anti-social behaviour (23%)	1. Anti-social behaviour (26%)
2. Anti-social behaviour (28%)	2 House Burglary (22%)	2.Damage (14%)
3. Violent Crime (22%)	3 Damage (19%)	3. Alcohol related crime (13%)
Drugs (5%)	Violent Crime (12%)	Theft of / from vehicle (11%)

A full breakdown of the consultation can be fine in the attachment below.³



Headline Results
consultation 2010.pdf

² The fourth choice is listed in order to demonstrate how far apart the level of opinion was between 3rd and 4th position.

³ The consultation only reflected the views of 128 people when the population of Spelthorne is over 90,000 so great caution has to be given to any conclusions as this is not a sample size large enough to hold any validity, it is also not representative of the population as a whole. Nevertheless, it formed part of the overall process in the identification of the key priorities.

PERFORMANCE DATA

The first part of the assessment provides a brief overview of general performance around the main volume crime types as established by the British Crime Survey. Secondly, it focuses on the level of crime in accordance with the Spelthorne key priorities listed within the 2010 – 11 Community Safety Plan n.b. crime prevention and reassurance are not ‘crimes’ so are not addressed at this stage. Finally the document considers patterns of crime and disorder not specifically covered within the current strategy as well as considering the implication to Spelthorne in the light of the recession.

BCS Comparator Crime

GOSE⁴ measure the Partnership against a set of crimes, considered to have the most impact on the individual, taken from the British Crime Survey and called the BCS comparator crimes; the baseline was set in 2003/4. These 10 crimes are:

- Theft of motor vehicle (including attempts)
- Theft from a motor vehicle (including attempts)
- Vehicle Interference
- Dwelling-Burglary
- Theft of a Pedal Cycle
- Theft from the Person
- Criminal Damage
- Common Assault
- Wounding
- Personal Robbery

British Crime Survey Comparator Crime

Previous Year Ending Selected Month		Year Ending Selected Month
<u>1 Oct 07 - 30 Sep 08</u>		<u>1 Oct 08 - 30 Sep 09</u>
4,582	Down 408 (9%)	4,174

Previous Year Ending Selected Month		Year Ending Selected Month
<u>1 Oct 08 - 30 Sep 09</u>		<u>1 Oct 09 - 30 Sep 10</u>
4,174	Down 477 (11%)	3,697

The above chart shows that over the 12 months since the last strategic assessment the amount of crime recorded crime in the above categories has reduced by 11%; this is in keeping with the overall picture of crime in Spelthorne, and that is one of a downward trend and builds upon last year’s performance which had 9% reduction..

⁴ Government Offices of the South East: All local authority areas are measured on the BCS comparator crimes; this provides the Government a snapshot of the country in respect of performance in key crime areas as well as a prominent indicator for each Partnership as to areas that may need further work.

ALL CRIME:⁵**All Crime**

Previous Year Ending Selected Month		Year Ending Selected Month
<u>1 Oct 07 - 30 Sep 08</u>		<u>1 Oct 08 - 30 Sep 09</u>
7,720	Down 529 (7%)	7,191

Source: iQuanta 13-10-2009

All Crime

Previous Year Ending Selected Month		Year Ending Selected Month
<u>1 Oct 08 - 30 Sep 09</u>		<u>1 Oct 09 - 30 Sep 10</u>
7,191	Down 331 (5%)	6,860

Source: iQuanta 14-10-2010

In 2007 – 08 all recorded crime was down by 20% compared to the previous year; in the strategic assessment for 2008 – 09 crime has continued to fall by a further 7%; in 2009 – 10 crime decreased by another 5%.

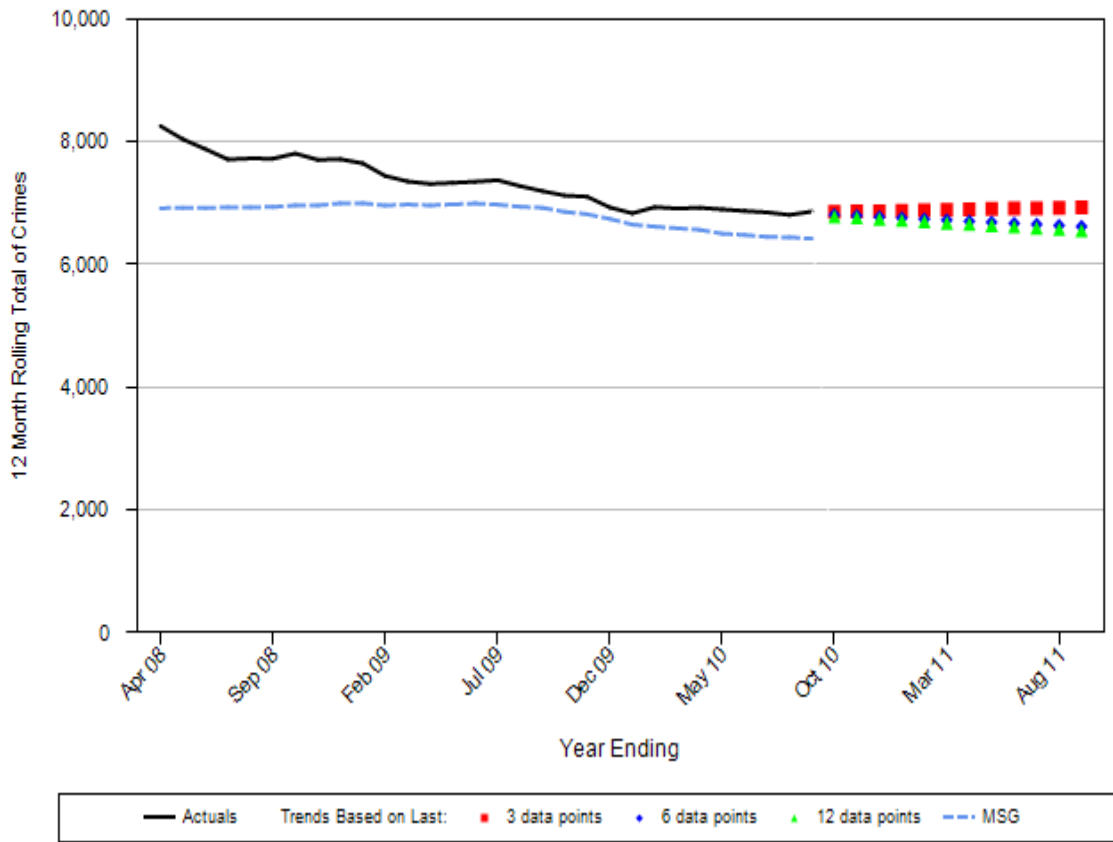
For the period of 1st October 2006 to 30th September 2007 there **were 9722** incidents recorded; by October 2010 this had shrank to **6,860** crimes, a significant **29.4% reduction**. One of the key factors which has had a disproportionate impact on the crime figures was the execution of the Operation Wentwood⁶ in April 2008 which was the culmination of 6 months worth of covert test purchases in the Spelthorne area. The effects of which is still being felt 2 years later.

The Operation targeted crack cocaine and heroin dealers who operated in Spelthorne, in particular in the Sunbury area and resulted in 26 people being charged with supply offences. Taking these offenders off our streets has continued to impact on local crime levels. The impact of our current strategy, particularly with the emphasis in the reduction in vehicle crime as a volume crime, has also been a major contributory factor.

⁵ This relates to the total amount of all crimes recorded by the police

⁶ Significant police operation targeting drug dealers

**iQuanta Projection - Number of Crimes
Surrey - Spelthorne CDRP
All Crime
01 Apr 08 - 30 Sep 10**



The above chart illustrates the way in which crime has fallen since 2008 and projects where Spelthorne will be in August 2011; the chart also puts into context the level of performance by comparing the borough with 14 other boroughs that have similar characteristics and demographics from around the country – this is called the ‘Most Similar Family’ MSF. As can be seen, the gap between Spelthorne and the average of other boroughs has continued to narrow year on year.

KEY CRIME TYPES

Burglary Dwelling

Previous Year Ending Selected Month		Year Ending Selected Month
<u>1 Oct 07 - 30 Sep 08</u>		<u>1 Oct 08 - 30 Sep 09</u>
496	Down 50 (10%)	446

iQuanta

Previous Year Ending Selected Month		Year Ending Selected Month
<u>1 Oct 08 - 30 Sep 09</u>		<u>1 Oct 09 - 30 Sep 10</u>
446	Down 17 (4%)	429

Source: iQuanta 14-10-2010

Overall these have decreased due to a reduction in the two categories of Level 2 Burglaries⁷ and Vehicle Burglaries⁸. Vehicle Burglaries have decreased by 26% this year being the lowest figures since 2006. This reduction is thought to be due to the arrest and imprisonment of 2 teams of offenders who specialised in these offences under 'Operation Firestone' and 'Operation Cylinder'. Offences are currently distributed fairly evenly across the Borough although there is a slight hotspot for these offences in the Ashford Central / Ashford North area. Of the 15 vehicles which have had recovery locations recorded and linked on police computers, two thirds were recovered within or just outside the borough borders, indicating local offenders are responsible for a portion of these offences. NB This data is not entirely reliable due to data entry issues whereby not all recoveries are being accurately recorded on Surrey Police computer system.

Level 2 burglaries also appear to have decreased this period and it is felt that this again may be due to the imprisonment of one offender who was prolific and has responsible for hundreds of such offences on a national scale.

Distraction Burglaries⁹ have remained stable over the past 3 years in Spelthorne, with offences this year being distributed evenly across the Borough. Of note however is that the 'Suspicious Caller Reports', which have previously been used as an indicator for distraction burglaries with respects to these possibly being attempted burglaries or offenders 'casing' the premises prior to an offence, have increased for the second consecutive year; these reports are at their highest since 2006. It is thought that this inconsistency could be due to the public having an increasing awareness of such offences and therefore being increasingly suspicious of any unknown or unexpected callers. This increase in reports could therefore represent a significant improvement in crime awareness and could in turn indicate that awareness initiatives are having a beneficial effect.

Burglary Non Dwelling

Previous Year Ending Selected Month		Year Ending Selected Month
<u>1 Oct 07 - 30 Sep 08</u>		<u>1 Oct 08 - 30 Sep 09</u>
511	Down 82 (16%)	429

Previous Year Ending Selected Month		Year Ending Selected Month
<u>1 Oct 08 - 30 Sep 09</u>		<u>1 Oct 09 - 30 Sep 10</u>
429	Down 40 (9%)	389

Source: iQuanta 14-10-2010

Offence figures for non dwelling burglaries are currently at their lowest for 4 years. It is possible that these decreases were linked to the significant decrease in thefts of metal

⁷ An offence whereby the property stolen is traditionally more complex to dispose of, thus indicating a level of expertise by the offender. Generally this would include Antiques, Safes containing large amounts of cash / assets, China ware, statues etc. Items which may have been stolen to order, or where the offence may have needed a level of prior planning.

⁸ Burglaries where vehicle keys have been taken from within the property and the car stolen

⁹ Where an occupier is distracted by a caller who purports to be an official (i.e. gas / electric / water board) and steals from a property with or without an accomplice whilst the owner is in another room at the instruction of the 'official'.

across the Borough that decreased substantially by 72% down to only 38 offences for the entire year, bringing figures back in line with those from 2006-2007. It is possible that some of the offences were being committed by the same offenders who have been detained either in another policing area or for other reasons resulting in a stop of their offending.

The decrease in metal thefts could also be attributable to the increased awareness of businesses and premises such as churches, resulting in them employing security tactics of their own such as the use of smart water. Thefts of scrap metal fluctuate depending on the scrap metal prices; research shows that scrap metal prices boomed in 2007 and early 2008 which would have resulted in 2007-2008 increase in offences, whereas prices have decreased this year with the worldwide recession. E.g. prices for scrap copper in March 2009 were less than half that of March 2008¹⁰.

Acquisitive Crime¹¹

Previous Year Ending Selected Month		Year Ending Selected Month
<u>1 Oct 07 - 30 Sep 08</u>		<u>1 Oct 08 - 30 Sep 09</u>
1,529	Down 62 (4%)	1,467

iQuanta Data

Previous Year Ending Selected Month		Year Ending Selected Month
<u>1 Oct 08 - 30 Sep 09</u>		<u>1 Oct 09 - 30 Sep 10</u>
1,467	Up 128 (9%)	1,595

Source: iQuanta 14-10-2010

Acquisitive crime in Spelthorne has increased. An increase was anticipated within the previous strategic assessment as the economy was slowing down, unemployment was growing, more people had time on their hands and research suggests that some people who were ex-offenders and had secured employment, but later lost their job would find a return to theft as a way of supplementing their income.

¹⁰ Prices taken from <http://scrapmetalpricesandauctions.com/copper/Weekly> Copper 3M - USD

¹¹ Acquisitive crime as defined by iQuanta includes- Theft from a person; theft in a dwelling; unauthorised theft or taking of a cycle; other theft and handling; shoplifting

Acquisitive Crime Trends – Spelthorne Borough¹²

	Crimes		% change 09/10
	01/08/08- 31/07/09	01/08/09- 31/07/10	
<i>Thefts from Motor Vehicle</i>	546	470	-13.9
<i>'Sat navs'</i>	622	466	-25.1
<i>Tools</i>	54	59	9.3
<i>Number plates</i>	96	102	6.3
<i>Audio equipment</i>	44	36	-18.2
<i>Laptops</i>	20	18	-10.0
<i>Fuel</i>	28	14	-50.0
<i>Thefts of Motor Vehicle</i>	233	186	-20.2
<i>Mopeds/motorcycles</i>	50	34	-32.0
<i>Burglary dwellings</i>	466	424	-9.0
<i>Level 2 dwelling burglary[1]</i>	128	119	-7.0
<i>Vehicles from burglaries</i>	60	75	25.0
<i>Distraction burglary</i>	26	23	-11.5
<i>Suspicious caller (ICADs)</i>	2889	3167	9.6
<i>Burglary non-dwelling</i>	428	400	-6.6
<i>Theft of Metal</i>	62	142	129.0
<i>Theft of Catalytic Converters</i>	0	12	N/A
Business Crime			
<i>Shoplifting</i>	558	558	0.0
<i>Shoplifting with 3+ offenders</i>	23	14	-39.1
<i>Business burglary</i>	36	41	13.9
<i>Theft by employee</i>	19	16	-15.8
<i>Make off without payment</i>	193	191	-1.0

[1] Denoted by property stolen requiring traditionally more complex theft/disposal: safes, art, jewellery/clocks/watches, porcelain / chinaware, antiques. It should be noted that this is a relatively crude indicator, particularly as the rise of internet-based auctions makes many items more easily disposable.
Source: Surrey Police

Table 1 above shows that shoplifting has remained static, however the time period covered by the above chart is not the same as the comparative data as used in previous strategic assessments (1st October to 31st September); whilst caution should be applied, it is also apparent that any increase or decrease from 1st October last year is likely to be slight.

Shoplifting is likely to be linked to the current economic climate, meaning that during this economic downturn certain individuals are finding it more difficult to legitimately maintain their lifestyles with regards to clothing and food and therefore instead of paying the prices they are simply stealing the items. It is predicted that this increase will continue to rise in line with any further increases in prices and simultaneous increases in unemployment and decreases in income.

¹² The below data covers a different time period than the one covered by this strategic assessment as the comparative data was not available from Surrey Police, so caution needs to be had when drawing inferences with other data in this document.

Theft of fuel decreased from 28 offences to 14 over the period covered by the above charge, however with the price of fuel rising exponentially in the last 6 months (£1.30 a litre of unleaded after V.A.T was increased to 20%); it is strongly anticipated that this type of crime will increase and steps will need to be considered to tackle this potential rise.

Likewise theft of lead and other metals is also likely to increase as the value rises, a recent article in the Daily Telegraph explains

'2010 was the third worst year on record for the theft of metal from churches, with 1,484 claims costing the insurer more than £3 million. Incidents were up on last year but lower than in 2007 and 2008, when churches made more than 4,600 claims – costing more than £16 million – over the two years. Lead has nearly tripled in value over the past three years, topping £1,500 per ton this December compared with £570 at the end of 2008.'

Last year in Spelthorne theft of metal increased from 62 to 142 so in the local context the national rise has also been experienced in the borough; again, activity to address this will need to be identified in the forthcoming Action Plan.

Overall the chart shows that in the 2008/09 period there were a total of 3692 offences recorded under the above categories; in the 2009/10 period this fell to 3,400, a reduction of 7%.

The borough has experienced a series of car key burglaries since February and this reflects the period of greatest increase over the previous year. The offences in this series have been overnight with the greatest number occurring in the Sunbury and Ashford area. The most popular makes of vehicle taken have been Mercedes, BMWs and Audis, however, less expensive vehicles have also been targeted including commercial vehicles. Usually only one vehicle is taken at a time, however, on occasion two vehicles have been stolen.

Intelligence indicates that those responsible are travelling in from the Metropolitan Police area. A number of vehicles have been recovered just over the border with Spelthorne and the Metropolitan area and intelligence has identified a number of suspects.

The burglary element may be accounted for by the greater security placed on modern vehicles. It may be necessary (or simply easier) for offenders to steal the keys in order to take a vehicle, indeed a large proportion of the vehicles taken are less than 5 years old. However, given that a majority of these would be on the market last year this cannot be used as an explanation for the increase in burglary as the means of stealing vehicles. It is more likely to be a consequence of a number of prominent offenders being released from prison during the last twelve months.

With regards to the use of the vehicles following their theft, the most recent intelligence would suggest that the vehicles taken by offenders from Greater London are being used in other offences, including robbery and burglary. However, the whole intelligence picture is currently unclear and the fact that they may be stolen to be sold/exported cannot be discounted. A separate group of offenders was also identified from Thames Valley Police area, and it was believed that BMWs were being stolen by this group to be shipped out to Eastern Europe.

Criminal Damage

Previous Year Ending Selected Month		Year Ending Selected Month
<u>1 Oct 07 - 30 Sep 08</u>		<u>1 Oct 08 - 30 Sep 09</u>
1,531	Up 57 (4%)	1,588

Previous Year Ending Selected Month		Year Ending Selected Month
<u>1 Oct 08 - 30 Sep 09</u>		<u>1 Oct 09 - 30 Sep 10</u>
1,588	Down 276 (17%)	1,312

Source: iQuanta 14-10-2010

After a slight increase in the previous year, there has been a significant reduction over the course of 2009 – 10, this may be due to a number of factors including better targeted police neighbourhood patrols. However the rise in the number of neighbourhood watches (NHW) in the borough, from 167 last year to the current figure of 227 is suspected to be a major contributory factor, although it is recognised that it is almost impossible to prove this hypothesis. In the last assessment there were no NHW's in Stanwell, but due to the successful delivery of targets set out in the annual action plan there are now 10!

Vehicle Crime**Theft from a vehicle**

Previous Year Ending Selected Month		Year Ending Selected Month
<u>1 Oct 07 - 30 Sep 08</u>		<u>1 Oct 08 - 30 Sep 09</u>
727	Down 191 (26%)	536

Previous Year Ending Selected Month		Year Ending Selected Month
<u>1 Oct 08 - 30 Sep 09</u>		<u>1 Oct 09 - 30 Sep 10</u>
536	Down 67 (13%)	469

Source: iQuanta 14-10-2010

Theft of a Vehicle

Previous Year Ending Selected Month		Year Ending Selected Month
<u>1 Oct 07 - 30 Sep 08</u>		<u>1 Oct 08 - 30 Sep 09</u>
264	Down 18 (7%)	246

Previous Year Ending Selected Month		Year Ending Selected Month
<u>1 Oct 08 - 30 Sep 09</u>		<u>1 Oct 09 - 30 Sep 10</u>
246	Down 75 (30%)	171

Source: iQuanta 14-10-2010

The decrease in Theft from Motor Vehicles is mostly attributed to the decrease in the thefts of satellite navigation systems which saw a 25% reduction from 622 to 466 thefts. It could be inferred that this decrease has been due to work done to raise awareness of the threat of theft via PAD events as well as national initiatives and as a consequence owners are more careful about leaving the devices in the vehicle.

Theft of motor vehicles has fallen for the last 3 years continuously, it is believed that this is due to a number of factors; the improved security in cars over the last 10 years, campaigns to remind drivers about locking their vehicles as well as the detection and conviction of offenders.

Drug Offences

Numbers in treatment for Spelthorne

2009 - 2010 Clients in Treatment	Surrey		Spelthorne	
	n	%	n	%
Gender				
Male	2892	67%	370	72%
Female	1455	33%	145	28%
Ethnic group				
White British	3957	91%	475	92%
Other	388	9%	40	8%
Age				
18 - 24	357	8%	47	9%
25 - 34	1173	27%	155	30%
35 - 44	1457	34%	157	30%
45 - 54	910	21%	121	23%
55 - 64	342	8%	26	5%
65+	108	2%	9	2%
Accommodation				
No Housing Problem	3697	85%	438	85%
Housing Problem	485	11%	66	13%
NFA	163	4%	11	2%
Employment				
Regular Employment	1008	23%	130	25%
Unemployed	2229	51%	276	54%
Other*	1104	25%	109	21%
Main drug				
Alcohol	2072	48%	205	40%
Drug Non PDU	427	10%	60	12%
Drug PDU	1847	42%	250	49%
Population				
Total Population**	734,320		61,680	
In Treatment		0.59%		0.83%
Total in Treatment	4347		515	

- There were a total of 515 clients accessing treatment with Spelthorne as their Borough of residence. This corresponds to a decrease of 52 clients on last year's figures;
- The majority of clients were male (370) and the key age group was equally split between 25-34 year olds and 35 to 44 year olds;
- Access into Drug treatment accounted for 61% of all engagements and Alcohol 40%;

This is almost identical compared to last year's figures of Drugs 58% and Alcohol 52%.
- Problematic Drug Users¹³ (PDUs) accounted for 49% of all individuals in treatment.

Drug related violent crime has significantly reduced, there has been nearly 27% decrease from 64 offences to 47 (see chart page 29); also drug related crime per se has also seen a decrease of nearly 31% from 146 offences to 101.

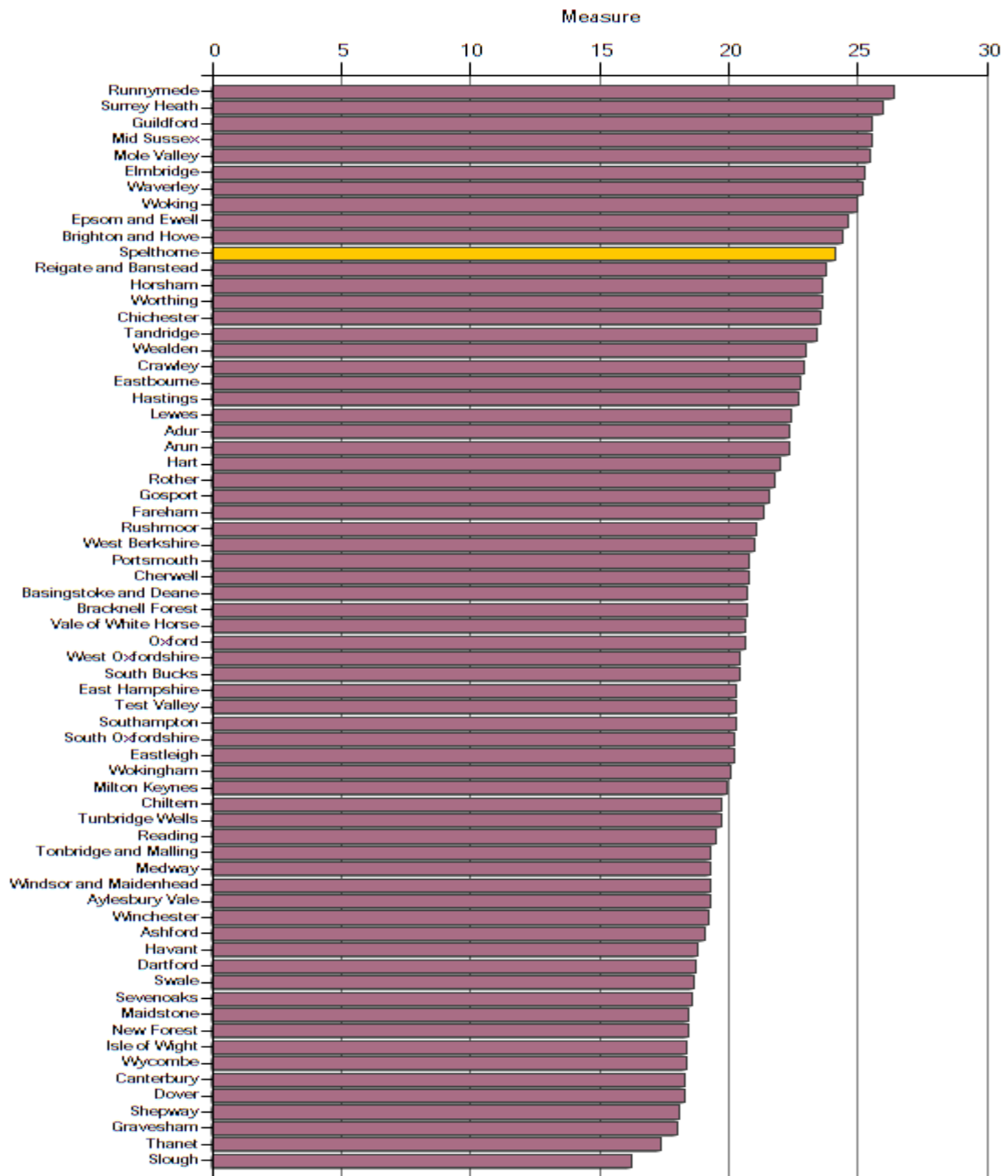
It is possible that this reduction in drug related violent crime is linked to a culmination of work carried out by the DAAT in supporting offenders to beat their addiction. An additional point of note relates to the extra facility provided to the police in managing prolific & other priority offenders by making available to the voluntary drug testing. This allows for support in obtaining employment, education and training to be matched by negative drug tests; otherwise known as the 'carrot & stick' method.

Possession of drugs is not an indicator that any inference can be drawn, it does not mean that there are more or less drug users, only that police detections have increased or decreased.

¹³ PDUs are defined as individuals who are using opiates (heroin) and/or crack-cocaine.

Alcohol

Increasing Risk Drinking levels (in % of the population) in the South East of England by Local Authorities



Estimated number of binge drinkers by Local Authority

LOCAL AUTHORITY	Total Population (16yrs >)	Estimated Number
Elmbridge	103,600	18337
Epsom & Ewell	58,600	8672
Guildford	111,800	19453
Mole Valley	68,100	12394
Reigate & Banstead	109,600	20166
Runnymede	70,200	11934
Spelthorne	75,700	15518
Surrey Heath	66,700	10805
Tandridge	65,600	10561
Waverley	94,800	16779
Woking	73,900	13080
SURREY	898,600	157699

There is estimated to be 15518 binge drinkers in Spelthorne which represents an increase of 3700 individuals compared to last year's estimation of 11818.

The number of recorded crimes attributable to alcohol in Spelthorne has decreased by almost 1/1000 point compared to last year going down to 7.6/1000 head of the population from 8.5/1000. The number of violent crimes attributable to alcohol in Spelthorne has also decreased 5.74/1000 from 6.22/1000 in 2008/09.

Recorded crimes attributable to alcohol by Local Authority

areaname	Recorded crime attributable to alcohol: Crude rate per 1,000 population (2009/10)	Lower 95% CI	Upper 95% CI	Number of all recorded crime attributable to alcohol (2009/10)	Recorded crime attributable to alcohol: Crude rate per 1,000 population (2005/06)	Recorded crime attributable to alcohol: Crude rate per 1,000 population (2006/07)	Recorded crime attributable to alcohol: Crude rate per 1,000 population (2007/08)	Recorded crime attributable to alcohol: Crude rate per 1,000 population (2008/09)
Elmbridge	5.4	5.05	5.86	704.89	5.4	6.5	6.8	5.4
Epsom and Ewell	6.3	5.74	6.91	452.72	5.9	7.2	6.9	5.8
Guildford	6.3	5.89	6.75	846.93	6.4	6.8	8.0	6.0
Mole Valley	5.1	4.59	5.57	422.08	4.2	5.0	4.8	4.9
Reigate and Banstead	7.5	7.09	8.03	1006.93	6.1	7.4	7.3	6.9
Runnymede	6.3	5.77	6.86	517.69	6.1	5.9	4.9	5.9
Spelthorne	7.6	7.04	8.18	697.35	8.8	10.0	9.7	8.5
Surrey Heath	5.8	5.26	6.31	478.53	4.8	6.2	5.9	5.0
Tandridge	5.1	4.61	5.60	413.28	4.8	5.3	5.3	5.1
Waverley	3.9	3.59	4.31	466.87	3.8	3.9	4.2	3.5
Woking	7.7	7.13	8.28	704.63	7.0	7.5	6.4	7.1

It is estimated that there are 18243 people drinking at increasing risk levels in the Spelthorne area which represents an increase of 387 individuals compared to last year's figure of 17856. The below table shows the numbers estimated of increasing risk drinkers within each of Surrey's Local Authorities. These have been calculated using NWPFO data and mid-2007 population estimates (ONS, 2007).

Please note that there is a small discrepancy between the total numbers for Surrey quoted above and those derived in the tables below. This is due to the use of different population estimates.

Estimated number of increasing risk drinkers by Local Authority

LOCAL AUTHORITY	Total Population (16yrs >)	Estimated Number
Elmbridge	103,600	26210
Epsom & Ewell	58,600	14415
Guildford	111,800	28509
Mole Valley	68,100	17365
Reigate & Banstead	109,600	26084
Runnymede	70,200	18532
Spelthorne	75,700	18243
Surrey Heath	66,700	17342
Tandridge	65,600	15350
Waverley	94,800	23889
Woking	73,900	18475
SURREY	898,600	224,414

The estimated number of higher risk drinkers (see below table) in the Spelthorne area is 3171 which represents an increase of 74 individuals compared to last year's figure of 3097. It is worth noting that the figure is not marked by NWPFO as being significantly better than the national average although it is marginally better than the South East average. However the higher proportion of increasing risk drinkers for several years running may also suggest that the figure for higher risk drinking may rise overtime.

Estimated number of higher risk drinkers by Local Authority

LOCAL AUTHORITY	Total Population	Estimated Number
Elmbridge	103,600	4247
Epsom & Ewell	58,600	2332
Guildford	111,800	4930
Mole Valley	68,100	2615
Reigate & Banstead	109,600	4351
Runnymede	70,200	3095
Spelthorne	75,700	3171
Surrey Heath	66,700	2541
Tandridge	65,600	2457
Waverley	94,800	3735
Woking	73,900	2978
SURREY	898,600	36452

Spelthorne has the 3rd lowest level of hazardous drinking¹⁴, but the 3rd highest level of harmful drinking¹⁵ within Surrey, perhaps indicating that whilst less people are drinking at hazardous levels, when they do drink they are doing so at levels that causes harm. The rate

¹⁴ **Hazardous (Increasing risk)* drinking** is drinking above recognised sensible levels, but not yet experiencing harm (measured by consumption of between 22 and 50 units per week for males and between 15 and 35 units per week for females).

¹⁵ **Harmful (Higher risk)* drinking** is drinking above recognised sensible levels and experiencing harm, such as an alcohol-related accident, acute alcohol poisoning, hypertension, cirrhosis (measured by consumption of over 50 units per week for males and over 35 units per week for females)

of alcohol related admissions to hospitals is one of the diagnostics used to help analyse the level of alcohol related crime as below: -

Percentage change in Alcohol related hospital admissions for Surrey and Local Authority

	2002/03 - 2003/04	2003/04 - 2004/05	2004/05 - 2005/06	2005/06 - 2006/07	2006/07 - 2007/08
Surrey	4%	22%	16%	0%	10%
Elmbridge	14%	15%	5%	3%	8%
Epsom and Ewell	5%	4%	-2%	-6%	22%
Guildford	-3%	30%	22%	-6%	7%
Mole Valley	-1%	11%	8%	4%	6%
Reigate and Banstead	-4%	38%	6%	3%	2%
Runnymede	25%	19%	22%	-2%	10%
Spelthorne	10%	19%	16%	0%	11%
Surrey Heath	-1%	14%	33%	6%	16%
Tandridge	-4%	50%	22%	0%	0%
Waverley	-1%	11%	32%	0%	16%
Woking	13%	42%	18%	-1%	11%

Source: PCO, 2009

Alcohol related crime:

Alcohol related crimes have increased year-on-year as follows: -

In 2007 there were 1205 alcohol related offences, by 2008 the figure reduced significantly to 1051 offences, giving a reduction of -13%. In 2009 this had increased to 1115 offences, but during the course of this year's strategy there had been a 20% reduction to 892 alcohol related crimes (see chart page 29).

It is suggested that this has been partly responsible to significant Partnership activity particularly between the council, police and NHS Surrey; for example there was 'The Big Drink Campaign' which highlighted safe drinking; Christmas poster and radio campaign, improved pub-watch mechanisms and much more.

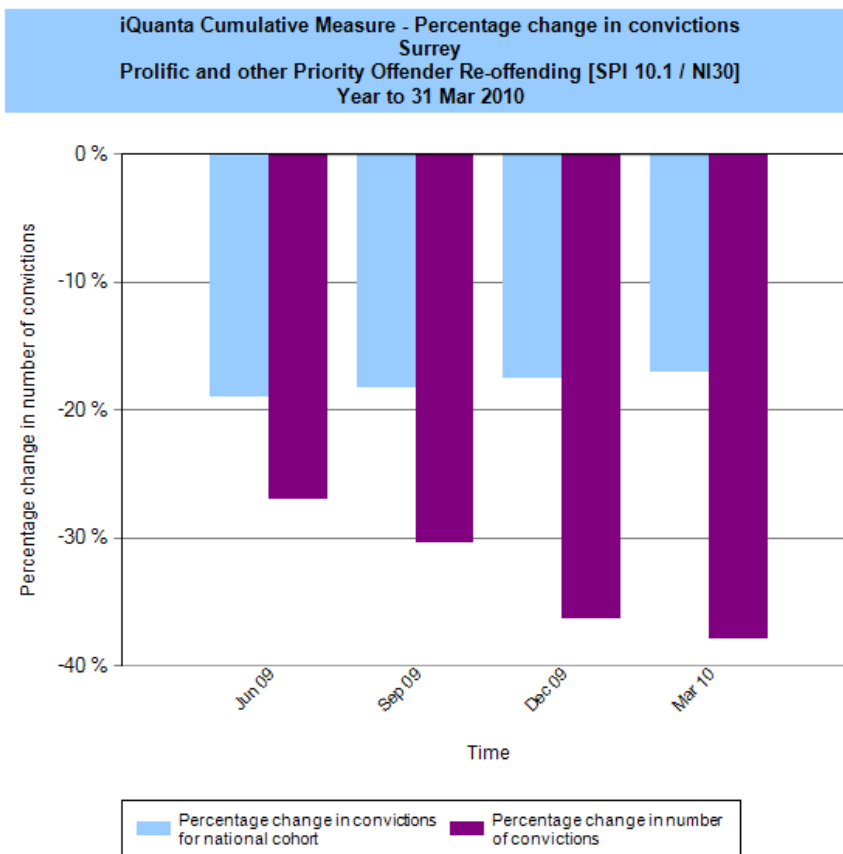
NHS Surrey have also been carrying out other significant campaigns around the Borough highlighting the dangers of alcohol, this also includes regular attendance on the Partnership Action Day.

Prolific & Other Priority Offenders¹⁶

Each year a group of known offenders are identified as being those who are responsible for a disproportionate amount of crime in the Borough, or whose behaviour is such that it causes significant harm to the community. Targets are then set to reduce the amount of crime committed; in Surrey the target was a reduction of 22% in 2009 -2010, in Spelthorne that target was more than exceeded with a reduction of almost 40%; this compares extremely favourably with the national average of 17%. This can be attributed in the main to the successful multi-agency collaboration within the Prolific & Priority Offenders Management Panel. Success in this area also plays a strong role in the overall strategy of reducing crime in the Borough.

The table below shows the reduction target set for Surrey in respect of offending by PPO's.

¹⁶ <http://police.homeoffice.gov.uk/operational-policing/crime-disorder/persistent-offenders.html>



	30 Jun 09	30 Sep 09	31 Dec 09	31 Mar 10
Percentage change in number of convictions	-27 %	-30 %	-36 %	-38 %
Percentage change in convictions for national cohort	-19 %	-18 %	-18 %	-17 %

Repeat Victims of Crime¹⁷

In 2006 there were 1648 persons reported by Surrey police as being repeat victims of crime; in 2007 that had reduced to 1319 repeat victims. By Oct 2008 – Sept 09 the number decreased a further 11% to 1180 repeat victims. The data for the same time period is not available from Surrey Police, however the data for the period Aug 2009 - July 2010 has been provided and that shows that there were 1237 repeat victims. As this data reflects a different time frame, it is impossible to draw any reliable inferences, so the data is provided for information purposes only.

Reducing repeat victimisation is a current priority and an area where the Partnership needs to continue to improve its focus upon the current reductions. Surrey police have reviewed their call handling systems in order to better identify and deal with repeat victims; the Partnership have purchased an IT solution which enable all cases of ASB to be tracked and repeat victims easily identified, this system is currently being piloted in Spelthorne, Elmbridge and Runnymede Community Safety Partnerships.

¹⁷ A person who had suffered more than one offence in a 12 month period

Domestic Abuse

Domestic abuse is a Government priority and a Spelthorne priority. Offences of violence have decreased during the last year by 12% compared to the previous year. Critically, the number of repeat victims who suffer violence has also seen a substantial decrease. The number of ZJ¹⁸ domestic incidents however has increased. The increase in domestic violence recordable offences on police systems could be the reason for the number of ZJ Domesticics decreasing as more are being recorded immediately as offences.

As with the repeat victim of crime data, the statistics supplied relates to a different time frame compared to what has been captured in previous years, so this data reflects the change that has taken place from 1st Aug to 31st July 2008 to 2010 instead of 1st October – 30th September data.

OFFENCE	1.8.08 – 31.7.09	1.8.09 – 31.7.10	Percentage Change
Domestic violence against the person offences	403	353	-12%
Domestic violence against the person offences - Repeats	180	128	-29%
ZJ Domestic violence incidents (non crimes)	133	193	+45%
ZJ Domestic violence incidents (non crimes) repeats	57	64	+12%

Please note that the above data is entirely dependant on the recording of repeat offences, by completion of a 'tick box' on the police crime recording system which is not entirely reliable. For this reason this data should be taken as an indicator only. Non crime refers to an incident where there has been no crime committed i.e. heated argument in the home which contains no threats, but the police have been called.

The decrease in domestic offences over the last year could be due to a number of factors: -

Firstly, that there has been an increasing education and acceptance of the issue of domestic violence, resulting in encouraging more victims coming forward and reporting offences which they previously may not have done. In particular, Partnerships throughout Surrey have been running annual 'Awareness Weeks'. Over the years there has been a steady increase in the reporting of domestic abuse, this may have peaked and we may be on the cusp of a drop in the level of domestic abuse over a longer term?

Secondly, the police are better trained to support victims when attending such incidents and public confidence in trusting the police has risen; the police have more effective mechanisms to encourage victims to report abuse.

Thirdly, that the ZJ incidents have increased because not as many are now escalating to violence, as this type of offence is more frequently becoming viewed as unacceptable by the public (much in the same way drink-driving has rightly become stigmatised) and a would be offender is pulling back from outright violence in the knowledge that as a consequence of his / her actions, they may receive media coverage and shame in the eyes of their peers; in essence the reduction may be a symptom of cultural changes taking place within society.

¹⁸ This is a collective police report of ongoing incidents of the type specified

Anti-Social Behaviour¹⁹

ASB Incidents
Spelthorne Oct 09 to

Over the last 3 years there has been an overall reduction in ASB across the Borough from 6874 incidents recorded during 1.10.07 – 30.9.08, 6365 incidents during the same period 2008 – 09 and 6272 incidents for 2009 – 10; a total of 602 less incidents of anti-social behaviour suffered by our communities.

Analysis of the data shows that one of the key indicators 'rowdy & inconsiderate behaviour' had dropped from 3,400 in 2008 / 09 to 3,159 this year, a reduction of 241 incidents; the number of abandoned motor vehicles also dropped from 359 last year to 225 this year. Overall the volume of ASB incidents recorded fell from 6365 to 6272, a reduction of 93; the main increase was found within the number of vehicles causing a nuisance or used inconsiderately; this rose from 989 last year to 1162 this year.

Within Stanwell North & Stanwell Moor the number of reported incidents dropped from 989 last year to 749 in 2010; Sunbury Common on the other hand saw an increase from 515 last year to 720 this year.

Further examination of the figures reveal that out of the 10 neighbourhood beats in Spelthorne, 6 saw a reduction in ASB whilst 3 showed an increase; Last year Stanwell North & Stanwell Moor saw numbers rise from 677 to 989 (+312), but this year saw the largest reduction as mentioned above. It is also worth noting that last year in Sunbury Common, the biggest reduction in ASB incidents was recorded, from 1282 to 515 incidents (-767), but this year saw the largest rise.

Source: Surrey Police

In respect of Staines a Section 30 Order was in put into place in the Town Centre area during August 2010 due to the level of anti-social behaviour experienced on a Sunday afternoon, this has more than likely contributed to this year's reduction.

It is believed that the significant reduction of complaints in the Stanwell area is in part due to the various interventions carried out by a number of multi-agency groups working in the area, for instance the Stanwell Hub, SureStart Children's Centre and Stanwell Community Projects. The Community Incident Action Group has also been extremely effective in managing ASB by offenders who have come to its attention.

Anti-Social Behaviour Orders²⁰

One of the options available for dealing with people who persistently behave in an anti-social manner is to apply for an anti-social behaviour order. This is an order obtained under civil law rather than criminal, however breach of the order can mean a term of imprisonment of up to 5 years and as such a breach is a criminal offence. Of late, the Government as part of its review of anti-social behaviour in the light of the Pilkington case in Leicestershire has called on the justice system to enforce ASBO breaches more vigorously.

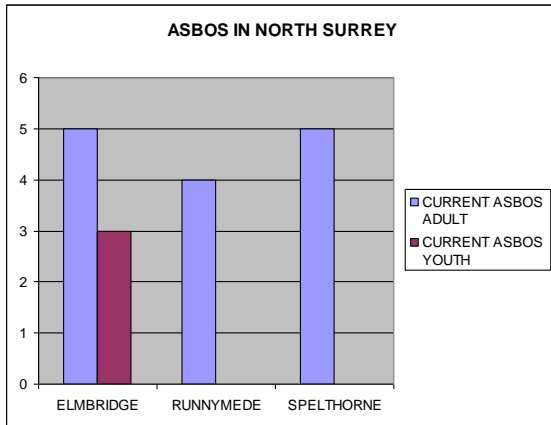
¹⁹ Abandoned vehicles; animal problems; Hoax calls; begging; fireworks; noise; malicious communications; prostitution; littering, nuisance neighbours; rowdy inconsiderate behaviour; street drinking; trespass; vehicle nuisance

²⁰ <http://www.homeoffice.gov.uk/anti-social-behaviour/penalties/anti-social-behaviour-orders/>

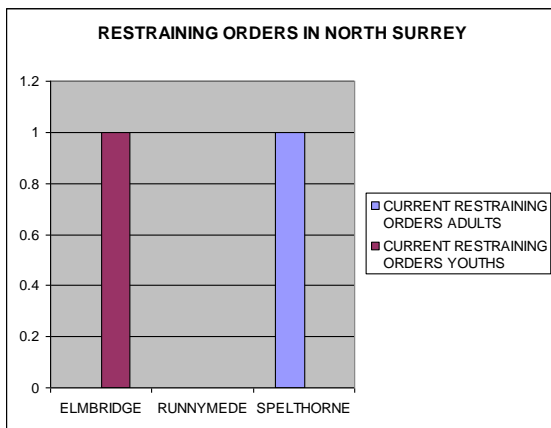
The Coalition Government is currently reviewing the availability of ASBO's and it is believed at this stage that the ASBO will be replaced by something that will empower local agencies to take effective action against prolific offenders.

The number of orders in place at any one time cannot be considered as success or failure; indeed an ASBO should be regarded as a last option after other means to change behaviour has failed. The below chart shows that there are currently 5 adult ASBO contracts and none for young people (aged under 18). There is also only one adult restraining order in place.

Nov 10



Nov 2010



Impact of Closed Circuit Television (CCTV) 1.10.09 – 30.9.10

Origin of Incident	Totals
Located by camera	235
Reported by police	388
Police Radio originated	451
Member of Public	73
TOTAL	1147

Type of incident	Totals
CRIME	338
PUBLIC ORDER	276

DRUGS	26
MISSING PERSON	87
ROAD TRAFFIC	130
OTHER	332
Persons Arrested	215
TOTAL	1404

	Staines	Ashford	Sunbury	Stanwell	Shepperton
Total number of Persons Arrested	173	18	6	10	8

The above charts provide an insight in relation to the effectiveness of the CCTV cameras which are monitored by security staff 24 hours a day 7 days a week. As can be seen 215 people have been arrested which involved the use of the CCTV system; the types of incidents that they have been used to monitor suggest that their use far exceeds the original vision of reducing and detecting crime.

CCTV provides a means of reassuring the public when visiting our town centres as well as enabling the police to respond more effectively to reports of crime by providing evidence of the offence and description of the offender; in some cases the evidence is so compelling it reduces officer time on investigation and prosecution that it can allow more time for the police to maintain a visible presence rather than sat in an office 'making enquiries'. The council invests over £100k a year to maintain the system and in the current economic climate this is currently under review, but there is no doubting the benefits monitored CCTV provides including enhancing the detection rates for town centre offences.

Reassurance Crime and Incident Trends²¹

Reassurance trends for Spelthorne

Issue	Crimes/Incidents		% change 09/10
	01/08/08- 31/0709	01/08/07- 31/07/10	
<i>Burglary by under 18s</i>	14	25	78.6
<i>Shoplifting by under 18s</i>	169	74	-56.2
<i>Auto-crime by under 18s</i>	17	32	88.2
<i>Youth on youth violence</i>	57	72	26.3
<i>Youth on youth robbery</i>	2	7	250.0
<i>Youths and knives (ICAD)²²</i>	'see footnote'	104	N/A
<i>Criminal Damage (by u18)</i>	155	78	-49.7
<i>Arson (by u18)</i>	4	4	0.0
<i>Graffiti crimes (ICADS)</i>	110	32	-70.9
<i>ICAD social disorder (u18)²³</i>	'see footnote'	2780	N/A
<i>Rowdy/nuisance behaviour²⁴</i>	'see footnote'	3280	-3.6
<i>Neighbour nuisance</i>	566	556	-1.8
<i>Alcohol related crime</i>	1115	892	-20.0
<i>Drug-related crime (not drugs offences)</i>	146	101	-30.8
<i>Total violence against the person</i>	492	393	-20.1
<i>Alcohol-related violent crime</i>	1115	892	-20.0
<i>Public place violent crime</i>	902	802	-11.1
<i>Drug-related violent crime</i>	64	47	-26.6
<i>Crimes of hate</i>	133	147	10.5
<i>Incidents of hate (ZJs)</i>	23	12	-47.8
<i>Drink driving (CIS)</i>	147	111	-24.5
<i>Nuisance vehicles</i>	1027	1166	13.5
<i>Dangerous driving/riding</i>	16	10	-37.5
<i>Theft of pedal cycle</i>	267	214	-19.9
<i>Domestic Violence</i>	397	350	-11.8

²¹ It must be noted that changes to ICAD reporting and recording has occurred during the last 12 month period and previously resulting in some data discrepancies. This has led to some data being unobtainable and also some year on year comparisons to be inaccurate and therefore not provided.

²² Due to changes in the methodology to capture youth and age related data, it is not possible to retrieve accurate data for the 08-09 period.

²³ See above.

²⁴ See above.

Burglary by under 18s

Despite the increase in offences linked to under 18's, the proportion of burglaries linked to a person under 18 years old is still small (up to the end of September 2010 there were a total of 429 burglaries), although this is no reason to be complacent. The reason for the increase may be due to better detection levels or indeed a rise in this crime type by young people.

Auto-crime by under-18s

The same consideration taken for the above burglaries must also be taken for auto crime. The majority of individuals linked to a crime are only linked to one offence. Auto crime is also difficult to detect and it is therefore difficult to make conclusions from the data without further work. There were 640 thefts of or from motor vehicles between 1.10.09 and 31.9.10, so the 32 linked to these crimes are again very low (5%).

Summary

In the 2008/09 period there were 6938 incidents recorded that are considered to be influential on a person's feeling of safety; in 2009/10 there were 6017 comparable incidents, this gives a reduction of 921 incidents or 13%. By volume, alcohol related (violent) crime has changed more significantly than any other area (223 less incidents). This is good news, but any reduction or increase interpretation needs to be tempered with the knowledge that officers may not always record alcohol as being a factor when the incident is logged.

Increase public confidence and reassurance

Surrey Police in conjunction with Surrey County Council carry out quarterly surveys across Surrey to establish amongst other things, the main concerns around ASB by residents. The below chart identifies the key issues reported; as this does not show Spelthorne individually it is impossible to draw any conclusions from it in relation to Spelthorne..

**Joint Neighbourhood Survey – Surrey Police and Surrey County Council
Problematic Community Issues (% Very and Fairly Big Problem as % of
all respondents)**

Problematic issues, by quarter, 2008 Q1 – 2010/11 Q2.

Base per quarter = approximately 1650

How much of a problem, if any are the following issues in your neighbourhood?	2008/9 Q1	2008/9 Q2	2008/9 Q3	2008/9 Q4	2009/10 Q1	2009/10 Q2	2009/10 Q3	2009/10 Q4
Speeding motorists and anti-social driving	49%	48%	48%	43%	41%	42%	43%	40%
Traffic congestion	45%	45%	49%	44%	42%	41%	45%	46%
Teenagers hanging around on the streets	34%	31%	34%	32%	31%	30%	31%	29%
Parents not taking responsibility for the behaviour of their children	32%	27%	29%	27%	26%	26%	25%	23%
Graffiti and litter lying around	27%	25%	27%	24%	24%	23%	24%	24%
Vandalism / damage	27%	23%	26%	23%	21%	17%	18%	18%
Vehicle crime (theft of / theft from / damage to)	19%	20%	21%	21%	16%	17%	18%	15%
People not treating other people with respect or dignity	20%	17%	17%	16%	16%	15%	16%	15%
Burglary	19%	17%	16%	17%	17%	16%	17%	17%
Drunk or rowdy behaviour in public places	18%	16%	16%	16%	17%	18%	18%	16%
Presence of drug users / dealers	16%	13%	12%	12%	9%	10%	10%	10%
People cycling / skateboarding on pavements	13%	11%	12%	10%	10%	10%	11%	8%
Problem or noisy neighbours	9%	9%	8%	8%	8%	9%	8%	6%
Physical attacks	8%	8%	9%	8%	5%	5%	6%	6%

Surrey police have set up an Active Citizen Scheme (ACS) data-base which allows the police to communicate with a broad spectrum of communities and pass information electronically to those people most affected or interested. This facility will make a significant contribution towards reassuring communities by keeping them better informed and in a timely fashion. ACS is very much a two-way-street and information is both passed to those involved from the police, but also, more often requested from the community to the police.

Spelthorne Economy

As mentioned previously, unemployment can increase the level of acquisitive crime as more people have less money and some seek to bridge the gap between what they earned and what they now have. For this reason, it is important that where possible the strategy also supports initiatives intended to enhance the economic development of the Borough.

Below are some charts which give an insight to the current unemployment situation in Spelthorne. It can be seen that although unemployment has steadily risen since May 2008, it is not significant and well under some of our neighbours and the national average.

The below table shows the level of unemployment as a percentage of the economically active population in each area; please note that from August 2010 the population figures used by the Office for National Statistics to calculate the residence-based percentages have changed from working age 16-59 for females and 16-64 for males to aged 16-64 for both males and females. This slightly alters the percentage figures in the tables below.

Unemployment Claimant Count Trends by Local Authority

Date	Spelthorne		Elmbridge		Runnymede		Windsor & Maidenhead		Slough		Hounslow		Hillingdon		Richmond upon Thames	
	No.	%	No.	%	No.	%	No.	%	No.	%	No.	%	No.	%	No.	%
Jul 09	1,492	2.7	1,480	1.8	998	1.9	2,251	2.6	3,488	4.5	5,397	3.6	5,949	3.7	2,637	2.3
Aug 09	1,485	2.7	1,484	1.8	1,012	1.9	2,293	2.6	3,481	4.4	5,465	3.7	5,973	3.7	2,718	2.3
Sep 09	1,521	2.7	1,543	1.9	1,000	1.9	2,220	2.5	3,443	4.4	5,598	3.8	6,090	3.8	2,620	2.2
Oct 09	1,485	2.7	1,542	1.9	996	1.8	2,198	2.5	3,541	4.5	5,553	3.7	6,233	3.9	2,594	2.2
Nov 09	1,493	2.7	1,481	1.8	965	1.8	2,092	2.4	3,377	4.3	5,477	3.7	6,132	3.8	2,520	2.2
Dec 09	1,445	2.6	1,414	1.7	996	1.8	2,091	2.4	3,277	4.2	5,639	3.8	6,123	3.8	2,335	2.0
Jan 10	1,566	2.8	1,584	2.0	1,089	2.0	2,205	2.5	3,583	4.6	5,667	3.8	6,409	4.0	2,425	2.1
Feb 10	1,651	3.0	1,601	2.0	1,111	2.0	2,175	2.5	3,571	4.5	5,591	3.7	6,450	4.0	2,446	2.1
Mar 10	1,533	2.7	1,522	1.9	1,047	1.9	2,056	2.3	3,544	4.5	5,621	3.8	6,346	3.9	2,367	2.0
Apr 10	1,502	2.7	1,464	1.8	982	1.8	1,962	2.2	3,510	4.5	5,598	3.7	6,075	3.8	2,259	1.9
May 10	1,434	2.6	1,385	1.7	912	1.7	1,883	2.1	3,322	4.2	5,235	3.5	5,868	3.6	2,193	1.9
Jun 10	1,338	2.4	1,298	1.6	861	1.6	1,799	2.0	3,174	4.0	5,081	3.4	5,483	3.4	2,055	1.8
July 10	1,292	2.2	1,235	1.5	841	1.5	1,720	1.9	3,220	3.7	4,966	3.0	5,475	3.1	2,021	1.6
Aug 10	1,273	2.1	1,247	1.5	857	1.5	1,718	1.9	3,198	3.7	5,042	3.1	5,443	3.1	2,088	1.6
Sept 10	1,287	2.2	1,276	1.5	869	1.5	1,664	1.8	3,221	3.7	5,055	3.1	5,378	3.1	2,115	1.6

Source: Office for National Statistics – nomis

⁽¹⁾The unemployment figure is based on the monthly claimant count figures, which measure only those people claiming Job Seekers Allowance (JSA). The claimant count is normally a lower figure than those seeking work because some unemployed people are not entitled to claim unemployment related benefits, or choose not to do so. Because of the way the data is collected unemployment trends based on claimant count figures tend to be more up to date and reliable, especially at the local level.

The following table illustrates the number of vacancies in the Borough as well as surrounding authorities since July 2009. There are more vacancies now than any other month other than March 2010 for the last 16 months which indicates that the economy is steadily improving with a ratio of 1 job available for every 2 persons registered as unemployed. This obviously does not tell the whole story, nor indicate the type and level of vacancy available, but as a rough indicator it sends a very positive message.

Total Job Vacancies by Local Authority

Date	Spelthorne	Elmbridge	Runnymede	Windsor & Maidenhead	Slough	Hounslow	Hillingdon	Richmond upon Thames
Jul '09	389	432	383	521	509	801	1,207	555
Aug '09	424	484	670	603	696	1,024	1,457	519
Sept '09	317	363	400	780	719	761	1,310	454
Oct '09	317	552	291	659	660	1,710	1,638	934
Nov '09	317	678	419	770	790	1,288	1,610	655
Dec '09	294	482	360	571	569	866	1,211	411
Jan '10	588	809	314	364	706	585	1,254	282
Feb '10	624	727	361	443	616	808	1,331	401
Mar '10	714	646	602	581	659	1,299	1,587	562
Apr '10	421	624	687	573	667	981	1,025	504
May '10	416	738	618	950	860	1,101	1,350	623
Jun '10	526	876	620	901	765	1,015	1,475	641
Jul '10	273	659	443	739	633	1,134	1,245	581
Aug '10	552	840	715	858	952	1,219	1,900	700
Sept '10	*	*	*	*	*	*	*	*
Oct '10	672	897	845	786	952	2,256**	1,888	886

Source: Office for National Statistics - nomis

NOT PROTECTIVELY MARKED

* **Oct 2010:** The Jobcentre vacancy data for September 2010 has been withdrawn from the ONS website. This is due to problems identified with the source data supplied by DWP which they are currently investigating.

** This figure has been confirmed by the Department for Work and Pensions as being correct.

Borough Breakdown – Number of Actual Known NEET²⁵

At the end of May 2010, Reigate & Banstead was the Borough with the highest proportion of NEET with 4.67% (129 young people) of the total 16-18 year olds in that Borough. Epsom & Ewell had the fewest number of NEET young people with 38 (2.69%), 9 less than last month.

Guildford and Tandridge were the only Boroughs to see a rise in % NEET in the last month, while Elmbridge and Waverley have stayed at the same level. All other Boroughs have seen a % NEET reduction.

	<u>Actual number of NEET</u>	Total Cohort at end of Mar 10	% NEET – May 2010	Direction of travel	% NEET – April 2010
Elmbridge	93	2,241	4.15%	↔	4.15%
Epsom and Ewell	38	1,411	2.69%	↓	3.33%
Guildford	116	2,559	4.53%	↑	3.52%
Mole Valley	67	1,796	3.73%	↓	3.95%
Reigate and Banstead	129	2,764	4.67%	↓	5.14%
Runnymede	62	1,523	4.07%	↓	4.27%
Spelthorne	90	2,082	4.32%	↓	4.76%
Surrey Heath	45	1,428	3.15%	↓	3.50%
Tandridge	52	1,489	3.49%	↑	3.16%
Waverley	58	1,866	3.11%	↔	3.11%
Woking	89	2,175	4.09%	↓	4.51%
Borough Not Recorded	0	3,454	0.00%	↓	0.03%
Total	839	24,788	3.38%	↓	3.47%

Some Partnership activities have contributed towards reduced crime associated with lack of work / things to do and training. For example during 2010 the Partnership funded a 'Skills Bus' in our most deprived community Stanwell. This provided an opportunity for young people aged up to 23 to access 'taster sessions' in plumbing and carpentry, those engaged in the scheme were then signposted to college courses to develop skills and obtain qualifications.

²⁵ Not in Education Employment or Training

Public Perceptions & Experiences²⁶

Police

In the consultation exercise carried out during November / December 2010 several of the replies stated that the communities wanted to have more police officers on the street which would give a more visible presence; but overall the public were happy with the service they received

'Keep focused on community building! We have very few police and you can't have your professionally trained eye everywhere so it's us lot out here that need to be vigilant and pass information on to you. I think you do a very good job. Our local PCSO is a well known face around here and a trusted member of the community. It's people like him that give residents a "good" connection with the police and the opportunity to discuss observations and concerns that might help you piece together a bigger picture.'

Drugs / Alcohol / Inconsiderate Motorists

Speeding, dangerous driving & parking were highlighted by a number of respondents as a cause for local concern. Drug and alcohol abuse also received a number of considered views on the subject including a worry about illegal sales of alcohol to young people.

'So many of these issues merge together that it is difficult to prioritise them, so addressing the underlying problem(s) is probably most important, and in my opinion this means drugs and drinking alcohol in public places. These two problems lead to Anti-social behaviour, damage to property, theft from vehicles, burglary, violent crime, alcohol related crime... There should be a zero-tolerance approach to such matters - with offenders being rounded up and taken to their parents ...!!'

Anti-Social Behaviour

Anti-social behaviour also attracted a wealth of comments, but not all were directed at the younger generation and some recognised the improvements in some of the behaviours exhibited over time. Several complained that there were a lack of facilities for young people and that more should be made available.

'Riverfield Road and Thames Side is a fairly trouble free area. Former graffiti and teenage groups have ceased to be a problem following the periodic appearance of Community Liaison Officers along the towpath. The only annoyance is early morning revelry along the towpath after closing times at clubs and pubs and extensions of opening times will only spread the inconvenience over a longer period. Generally at the times when residents are out and about the local roads and to town precinct appears trouble free. ... I am aware that often (late in the evening) there are large groups of young people, up to say 25-30 years accumulating outside pubs. Most are peaceful gatherings but a useful police presence appears ready should there be any disagreements. This seems to be pitched about right.'

'Actions speak louder than words, hence enough meetings, and more action to curb anti social behaviour.'

'Generally speaking the area in which I live is fine. Rarely do I come across anti-social behaviour or gangs of youths, or drug dealing - but I do happen across it occasionally. While levels are acceptable at the moment I'd love to think they could be maintained at this level. Keep up the good work!'

The SSSP²⁷

In relation to the SSSP there was a mixed bag of responses, some identifying the lack of visibility of the Partnership, whilst others valued its contribution

²⁶ A total of 128 replies were received in response to the survey; 110 were residents and 18 were local businesses

²⁷ Spelthorne Safer Stronger Partnership

'This organization is too vague in its identity. You need a named person to represent it and point of contact. Most people if they did want to tell you something would not know where to start'

'Not, just to say I am encouraged by the work of the Partnership.'

Spelthorne

Many of the responses identified the area as being a safe place to live and relatively affluent area, but there are locations where we could do better; indeed we need to empower these residents so that they are confident and self supporting so that they can report issues and problems to the right organisations

'I have noticed in our area lots of mud, green patches being snarled up by vehicles, pot holes - it is a sorry sight. We need more parking spaces, more for the kids to do, and the area needs a clear up. In a road leading off ours, bags of rubbish are dumped by the garages. I don't even walk my dog through there any more as my puppy was attacked by a large dog which was off the leash. When I first moved in, in 2000, the area was really pleasant and people looked after their and others property and surroundings. Nowadays it is an eyesore and a pretty scary place to be, especially after dark.'

Choosing Our Priorities

Selection of the priorities is based upon the crime and disorder data provided from the various agencies as well as the results of relevant partner surveys. Further consideration has been given to the consultative process with the community, as adopted through the 'Face the People' event held in September 2010 and an internet consultation between October and November 2010; **the top 3 priorities were identified as House burglary, Anti-Social Behaviour, and violent crime.**

On the basis of the data available and analysis undertaken, it is recommended that the key priorities over the next three years be amended to take into account the research carried out as well as the impact that a change of government has had on national priorities: subject to being reviewed and refreshed annually. These priorities should have the flexibility to be amended by the Spelthorne Safer Stronger Partnership Board to reflect the introduction of a new or emerging priority.

Having reviewed the current priorities and in the light of this strategic assessment, it is therefore proposed that **violent crime** is added to the list of crimes that are most significant to Spelthorne residents; there is no longer a Local Area Agreement that demanded it, the targets cannot be accurately measured as there is no longer a Place Survey, funding has been significantly reduced so we need to focus on what we can deliver, what is most important and what can make the greatest impact. It is therefore proposed that targets under 'increasing confidence and greater reassurance' be removed.

The '**Big Society**' as pushed by the Coalition government is likely to have more significance and influence as time passes. With this in mind we are well placed as a result of the work already carried out to encourage greater participation in politics, decision making processes, and participatory budgeting etc, so the drivers are there and increasing. Stronger communities would give a greater chance of developing sustainable and effective solutions to local problems. The Partnership should continue to create a sense of 'pride of place' and a sense of well being; a tighter-knit community is likely to have a positive effect on levels of crime and anti-social behaviour.

Tackling the 'Stronger Agenda' is a significant challenge within community safety but can be the most rewarding, the most difficult to implement and certainly even more difficult to measure. It is recommended that a new section under the broad title of 'The Big Society' be introduced as Community Safety Partnerships must have a key role to play within its implementation.

PROPOSED STRATEGIC PRIORITIES 2011 - 2014

TO REDUCE: -

CRIME

(Those which are most significant to Spelthorne)

Burglary and acquisitive crime
Violent Crime
Misuse of drugs & alcohol
Criminal damage including graffiti
Theft of and from vehicles

ANTI-SOCIAL BEHAVIOUR

Anti-social behaviour
(Especially anti-social use of vehicles)

RE-OFFENDING

Re-offending rate of prolific and priority offenders
Repeat incidents of domestic violence

And

TO IMPLEMENT THE LOCALISM BILL

To support initiatives and groups where appropriate to community safety in providing more power and responsibility to local communities

TO REDUCE THE THREAT OF TERRORISM

Protect against terrorist attacks
Building resilience to violent extremism

Next Stage

- Prepare the Partnership Plan
- Prepare detailed action plans with SMART objectives
- Allocate funding

The Partnership has a budget, funding is being reduced year on year and funds will be allocated in accordance with priorities and against individual action where necessary. Below is the updated Partnership Action plan identifying the activities that have taken place to deliver the current strategy; this shows that the vast majority of actions planned have been undertaken.



SSSP Action Plan
2010 - 13 v4 Oct 27 2