

5 Introducing the
new Mayor

9 Local Government
Reorganisation

12-13 Summer
in Spelthorne

Fun for everyone at Places Leisure

We have activities to suit all abilities, from making a splash in the pool, learning to swim, working out in the gym, taking part in a group exercise class, taking on our Clip 'n Climb arena, and having a kick around on our football rooftop pitches!*



**Gym and group
workout classes**



**Swimming and
lessons**



**Rooftop football
pitches**



Clip 'n Climb



**Scan to
find out more**



Eclipse Leisure Centre
Knowle Green, Staines TW18 1AJ



Sunbury Leisure Centre
Nursery Road, Sunbury TW16 6LG

*Please note facilities vary at each centre

placesleisure.org

Letter from the Leader



Dear Residents,

As Leader of Spelthorne Borough Council, I am very proud to serve such a vibrant and engaged community. Thank you for all you do to make our Borough a special place.

At our Annual Council Meeting in May, we were pleased to welcome Cllr John Doran as our new Mayor. A long-standing resident, John brings deep local knowledge and a real passion for our community.

You can read more about him on page 5.

Significant change is underway in Surrey, with the government proposing to replace the two-tier system of councils with new unitary authorities. I believe a model of three unitary councils would best serve local services and ensure Spelthorne remains closely connected to its residents. A recent survey showed strong public support for this approach, and we now await the government's decision in the autumn.

In May, we also learned that government-appointed Commissioners will be supporting the Council. **I welcome their involvement and am committed to restoring Spelthorne's financial health and delivering meaningful improvements.** More on this can be found on page 9.

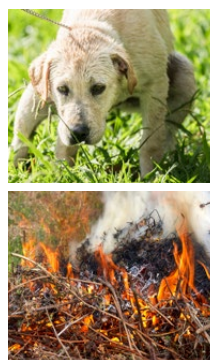
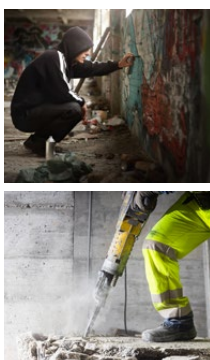
I am pleased to advise that planning permission will soon be required for converting houses into small HMOs (Houses in Multiple Occupation). This takes effect at the end of August for Staines, Ashford North & Stanwell South, and Stanwell North, with the remaining ten wards to follow in March 2026 after Planning Committee approval.

There is plenty to enjoy locally this summer, from music and theatre to village fairs and children's art sessions, many of which are free. See pages 12 and 13 for full listings.

Wishing you a happy and restful summer. As always, if you have ideas or concerns, I would love to hear from you.

Cllr Joanne Sexton, Leader of the Council

✉ cllr.sexton@spelthorne.gov.uk



Report it, so we can sort it

If you see an issue in your neighbourhood, report it to us so we can deal with it quickly, please don't leave it for someone else. Together we can make the Borough a better place.

Use the QR code, visit www.spelthorne.gov.uk/report or call us on 01784 451499.



Contents

Food hygiene ratings	5
Local Government Reorganisation	9
Best Value Inspection	9

Leisure

Summer events in Spelthorne	12-13
Sunbury Embroidery Gallery	15

Environment

Interview with the recycling team	7
Wildlife management in Spelthorne	19
Spelthorne Design Code	21

Community

Spelthorne's new Mayor	5
Police update	6
Spelthorne in Bloom	17

Independent Living

Hear here	23
Social prescribing	23

Contacts us:

- 🌐 www.spelthorne.gov.uk
- ☎ 01784 451499
- ✉ Spelthorne Borough Council, Council Offices, Knowle Green, Staines-upon-Thames, TW18 1XB

Follow us on social media:

- 📘 @spelthornebc
- ✂ @spelthornebc
- 📷 @spelthorneboroughcouncil
- 📺 Spelthorne Borough Council

- 📧 **Sign up to our monthly newsletter:** www.spelthorne.gov.uk/enews

- 👤 **Sign up to the Customer Portal:** www.spelthorne.gov.uk/customerportal

Bulletin enquiries: 01784 446432 / 01784 444260

Editors: Jennifer Medcraft / Louise King

Design: Tanya Allen

Cover: Summer events in Spelthorne

Advertising enquiries: Send an email to sue@frontlinedesigners.co.uk or call 07788 672455.

Spelthorne Borough Council does not accept responsibility for, or endorse, any products or services offered by advertisers.

The Bulletin is our community magazine produced by Spelthorne Borough Council, delivered free to every home in Spelthorne. Circulation 47,500.

♻ Printed on recycled paper.

As recommended on
Daynurseries.co.uk, please visit
to see what our parents say



Quality Care and Education

Providing a fully inclusive service for families with
children aged 6 weeks to 5 years from 7am to 6.30pm



At Knowle Green
the warm and
welcoming environment
ensures that your
child's individual needs
are prioritised, and
their interests
nurtured.



T: 01784 464141
E: knowle.green@childbase.com
Knowle Green Day Nursery, Knowle Green,
Staines-upon-Thames, Middlesex TW18 1AJ

Now taking registrations
We'd love to show you around



WHY STAGECOACH STAINES?

At Stagecoach Performing Arts, we give
our students the **creative courage** to
embrace life and make the most of their
talents and opportunities.

- 30 years' experience in performing arts teaching
- Over 600 schools worldwide
- 1 million children supported to reach their potential
- Regular national events at iconic theatres
- Over 22,000 casting opportunities via our talent agency
- A unique educational framework

Your child will learn how to

SING, DANCE & ACT

while developing a broad range of life skills.

STAGECOACH STAINES

W www.stagecoach.co.uk/staines

07802800633 E staines@stagecoach.co.uk

Classes are held at Thomas Knyvett College, Stanwell Rd, Ashford
TW15 3DU on a Friday after school, Saturday's and school holidays.
Now accepting childcare vouchers



Creative Courage For Life®



Say Goodbye to Skin & Nail Concerns

Naturally & Effectively

THE FUTURE OF SKIN & NAIL TREATMENTS NOW AVAILABLE FOR:

VERRUCAS

Eliminate stubborn warts & destroy viruses. Also supports skin healing.

PSORIASIS

Soothe inflammation, calm irritation & promote healthy skin regeneration without harsh chemicals.

NAIL FUNGUS

Kill fungal infections at the source, restoring clear & healthy nails.

- Non-invasive & pain-free
- No downtime
- Clinically advanced technology

BOOK YOUR
CONSULTATION



07990 088137
facialbodysculpting.co.uk



Monika Gal
Clinical Director



20 AVON ROAD, SUNBURY-ON-THAMES, TW16 7TB

66A HIGH STREET, EGHAM, TW20 9EY

A new Mayor for Spelthorne

Cllr John Doran was elected as the new Mayor of Spelthorne at the Annual Council Meeting on 22 May. Cllr Sandra Dunn was elected as Deputy Mayor.

Cllr Doran was born in County Limerick in Ireland in 1939 and emigrated to the UK in 1959 to join the Royal Air Force, serving in Aden and Kuwait. After leaving the Royal Air Force, he worked for Aer Lingus in London before joining El Al at Heathrow where he worked for 35 years.

He was first elected as a ward councillor for Stanwell North in 2019. He and his family have lived in Stanwell for 50 years, supporting local organisations such as the Stanwell Family Centre, the Stanwell Local Conversation, Stanwell Food Bank and the local Scout groups. He is married to Cllr Sue Doran and they have two children.

His ambition as Mayor is to promote Spelthorne Council as a resident friendly organisation. He hopes that despite the proposals for a change in local government structure,



from a two-tier system to a unitary system, Spelthorne's ethos for always putting the needs of residents first will prevail.

The Mayor will be raising money for four charities during the year:

- 1st Stanwell Scout Group
- Families Thriving Together
- Spelthorne Museum
- Surrey Care Trust

After being elected as Mayor, Cllr Doran said: "I would like to say thank you for electing me as Mayor - I feel honoured for your trust in me. I shall endeavour to uphold the best traditions for Spelthorne, working hand in hand with the Deputy Mayor, Cllr Sandra Dunn, during these unsettled times with the county reorganisation. I expect this to be a busy time for all!"

For information about the Mayor's events, visit www.spelthorne.gov.uk/mayor, email mayor@spelthorne.gov.uk or call 01784 446275



Food Hygiene Rating Scheme

The Food Hygiene Rating Scheme helps consumers decide where to eat or shop for food by giving clear information about the businesses'

hygiene rating standards. It is operated by the Food Standards Agency in partnership with Local Authorities.

Under the scheme, cafés, restaurants, pubs, shops and businesses which sell food are given a rating to show how well they comply with food safety standards. A score of 5 is the highest rating and 0 is the lowest. The rating shows how well the business is complying with food hygiene law and is based on standards found at the time of inspection.

Currently in Spelthorne, 93% of food businesses have food hygiene ratings of 4 (good) or 5 (very good).

To check a food businesses score, visit <https://ratings.food.gov.uk/spelthorne> or call the Environmental Health team on 01784 446291

Hassle free letting for landlords



Spelthorne Rent Assure is a scheme for landlords who are interested in renting their local property through the Council. We believe the scheme to be one of the most attractive currently on offer for landlords.

Under the scheme, the Council guarantees to pay landlords directly the full market rent for their property for up to two years.

Other benefits include the following:

- one month's rent paid directly in advance
- five weeks' repair bond
- free tenancy agreements (including right to rent checks)
- property viewings arranged
- free professional inventory
- tenancy training for tenants
- no agency fees – it's a completely free service

The Council will find the tenants and, if approved by the landlord, will draw up the agreements free of charge. Ongoing support for both the landlord and the tenant is available for the duration of the tenancy.

Spelthorne Council is looking for more private landlords, so please get in touch if you are interested in working with the Council.

To register your interest, please complete our enquiry form at www.spelthorne.gov.uk/sra.

For more details, visit www.spelthorne.gov.uk/sra, email sra@spelthorne.gov.uk or call 01784 448611

Payments at Elmsleigh car parks

We have been experiencing problems taking card payments at the Elmsleigh Car Parks in Staines-upon-Thames meaning we are currently only able to take cash. We expect this to be fixed in late August when a new system will be installed offering a fully ticketless system with the option to pay by cash, card or RingGo phone payments. Thank you for bearing with us.

Update from the Police Borough Commander



Over the past few months, we have been committed to the reduction of retail crime (shoplifting/assaults on staff) and antisocial behaviour across the Borough, with a particular focus on Staines. This is in response to the reported number of offences in these areas, and thanks to our work and the support of partner agencies we have started to see a reduction in both.

Our detection rates for crime are one of the highest in the county, which is a positive for us but also reflects the support of the community in reporting and providing evidence. Please continue to report even matters you may consider 'low level' as this data can help us use our resources effectively. It would be lovely to be able to be everywhere at all times but just don't have the numbers for this. That's why the information you send to us is so important, so we can be there when it matters, protecting the most vulnerable in our community.

Summer is a wonderful time (when the British weather allows it!), but we do tend to see an increase in antisocial behaviour, mainly relating to alcohol. My request is that you enjoy yourselves, but not to the detriment of others. Please be mindful of others in our community.

I hope you all have a safe summer. We will be out in the areas you need us the most, so please come and say hi if you see us. We also want to know the best way to communicate with you. We have 'meet the beats', a Facebook page, Surrey police page and community meetings but we hear you want more, so please get in touch via our website or Facebook page with your ideas.

*Matt Walton,
Borough Commander, Surrey Police*



Bonfires and BBQs

If you are heading outdoors this week, please remember:

- ✗ BBQs are not permitted in any of Spelthorne's parks and open spaces
- ✗ Do not light fires or use camping stoves
- ✗ Do not discard cigarettes or glass
- ✓ Be vigilant and report any signs of fire - no matter how small



This area is subject to an antisocial behaviour Public Spaces Protection Order

You are restricted from

Dangerous riding of devices

E-scooters, e-bicycle, bicycles, skateboards, and similar devices used in a manner that could alarm, harass, or endanger others may lead to a request to dismount.

Concealing identity to cause distress

Face coverings used with the intent to conceal identity for the purpose of causing distress are prohibited, excluding coverings worn for religious or cultural reasons.

Possession of potential weapons

Unauthorised possession of items like slingshots, catapults, or objects that could be used as projectiles in a way that threatens others, or property may lead to confiscation.

If you do not comply with this order, you will be committing an offence, and an authorised officer can issue you with a **£100 Fixed Penalty Notice** or face prosecution in court with a fine up to £1,000.

To report an incident please call **101**, in an emergency always call **999**.

The Public Spaces Protection Order can be found at www.spelthorne.gov.uk/PSPO

Tackling antisocial behaviour

Residents have told us they are concerned about certain types of antisocial behaviour in Spelthorne, so we have acted by introducing a Public Space Protection Order (PSPO) which grants additional powers to the Police and Council to address issues involving:

- antisocial use of bicycles, e-bikes, skateboards, e-scooters, hoverboards and similar devices
- use of face coverings such as masks, balaclavas and scarves
- possession of catapults, slingshots or similar items

Under the PSPO, individuals who fail to comply with instructions from an authorised officer may face a Fixed Penalty Notice or prosecution.

Exemptions apply for legitimate uses - for example, face coverings worn for medical, cultural or religious reasons, or the use of a bait catapult for fishing.

For more information about the PSPO, visit www.spelthorne.gov.uk/PSPO or call **01784 451499**

Meet Spelthorne's recycling team

Spelthorne Borough Council's Recycling Officer, Duncan and Operations Manager, Darren, are responsible for the collection of the rubbish and recycling in the Borough.

We spoke to them about how waste collections work in Spelthorne and got some tips on ways to get the most from your collections.

How many collection crews do you have?



We have two types of collection crews in the Borough. One group handles rubbish and recycling with large trucks, while a smaller team collects food waste, textiles and electrical items using different vehicles. These collections happen on the same day but at different times. Food waste is gathered in a wheelie bin and tipped into the truck for efficiency - it's not left in the bin.

What types of things can be recycled in Spelthorne?

In the recycling bin, we accept paper, card, glass bottles and jars, tin cans (but not paint cans!) and plastic tubs/pots/trays/bottles/sprays. We also have separate collections for food waste, textiles and small electrical items (including vapes and batteries) every week. Garden waste collection is also available for an annual fee.



What causes the most problems when it comes to recycling?

It can be a big problem for us when people put the wrong things in recycling as the company which processes it will reject the whole load if it's too contaminated. We then have to pay twice as much to have it taken away and incinerated. You can check online if a particular item can be recycled at www.spelthorne.gov.uk/recycling-search or give us a call. If in doubt, it's best to leave it out.

Which items tend to be incorrectly put in recycling?

Takeaway pizza boxes are a big one – we can't recycle those because of the food and grease which affects the quality of the cardboard pulp. Takeaway cups can't be recycled



because they are made from card and plastic film, laminated together, which is hard to separate. We also can't recycle polystyrene, tetra paks (like juice cartons), or hard plastics, like children's toys. Plastic bags, bin liners and plastic film should also go in the rubbish.

What can residents do to help improve recycling rates in the Borough?

We still find food waste in a lot of rubbish bins across the Borough, so would like to see more residents make use of the food waste collections. It's much cheaper to recycle food waste than handle it as rubbish, and it's also used to generate green electricity and fertiliser. It's also good for residents as it's collected every week, so it's not hanging around in the bin getting smelly and attracting flies. If you don't have a food waste bin, you can collect one from the Council Offices in Knowle Green.



What can residents do to help the collection crews?

As well as putting things in the right bin, please make sure your bins are out by 6am on your collection day and can be easily seen by the crew. Always tying food waste in a bag really helps too. We also suggest putting your food waste bin on top of your main bin to make it more visible for the collection crew.



Where can residents go to find out more?

You can get lots of information from our website at www.spelthorne.gov.uk/recycling or you can call us with any queries on 01784 451499.

SAS
Accountants Ltd

Short and Sons Accountants Ltd
Centurion House
Staines Upon Thames
TW18 4AX
Direct Line: 07481 479933
Email: Sales@shortandsons.co.uk



SHORT AND SONS ACCOUNTANTS LTD

**Fees start at only £299 PER
YEAR INCLUDING VAT!**

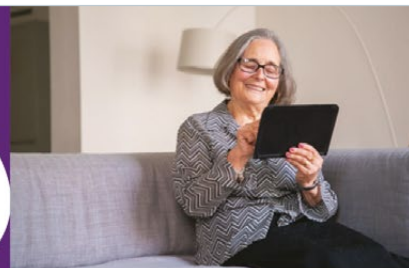
- Landlords, sole traders, partnerships, and Ltd Companies are all welcome!
- FreeAgent, Xero, Quickbooks and Sage partners
- 1000s of returns have been filed
- 500+ clients trust us for their reporting annually!
- Assistance with VAT, Payroll, CIS reclaims Etc
- 180+ 5 Star Google reviews & Low fixed fees!
- Simple 2-minute joining process

Call now 07481 479933

WWW.SHORTANDSONS.CO.UK

timeless

*Supporting Spelthorne
Residents & Businesses
for over 15 years*



Your Personal PC Advisor

Unlimited telephone and remote
assistance, 7am - 7pm everyday*

FROM JUST £225 A YEAR*

**Never feel stuck or frustrated with
your computer again**

- ✓ We can guide you through any PC issue
- ✓ We keep you online and connected
- ✓ Never fall victim to a scam again with our professional advice line
- ✓ We protect your PC with a business grade, fully managed anti-virus
- ✓ We can back up your precious files*

PRIZE DRAW

Sign Up To Tech: Friend Today
And Enter Our Prize Draw*

Win a Wireless CCTV Camera with
night vision & a rechargeable battery.

01784 421713
33 Hanworth Rd, Sunbury-on-
Thames TW18 3DA
www.timelessims.co.uk

*Terms and conditions apply

**2024 National
Award Winners!**

<https://www.timelessims.co.uk/awards/>

Sign Up Today

Email us at Sales@timelessims.co.uk
or call us on 01784 421713



ALDRIDGE & SONS

Roofing Contractors & Consultants

020 8844 0542 aldridgeandsons.co.uk

DOMESTIC & COMMERCIAL ROOFING SPECIALISTS

Aldridge & Sons Roofing Ltd has an unrivalled reputation for quality workmanship and customer service in both domestic roofing and the commercial roofing sector.

Recognising having roofing work completed to your home can be a daunting process our aim is to help our clients understand the process without feeling overwhelmed.

**Domestic roof & chimney repairs • Domestic new work & re-roofing, slate & tiled
3-layer 250 high performance built up felt • Firestone rubberised roofing • Alwitra single ply
Lead roofing • Guttering including new work & repair • UPVC cladding fascia's & soffit
Moss removal • Flat roofing systems • All commercial roofing**

If you are replacing 50% or more of your roof, you are legally obliged to upgrade the insulation and obtain a Building Regulations Compliance Certificate (BRCC) from your local authority building control.

As NFRC CPS contractor we have the unique ability to self-certify any work we complete complies with the relevant Building Regulations in England and Wales saving our clients time and money.

CALL 020 8844 0542 OR 07984 351 607



TRUSTMARK
Government Endorsed Quality



Local Government Reorganisation

The district and borough councils in Surrey have submitted proposals to the government outlining their vision for the future of local government in Surrey.

Nine district and borough councils support the formation of three unitary councils (Spelthorne, Epsom & Ewell, Guildford, Reigate & Banstead, Runnymede, Surrey Heath, Tandridge, Waverley and Woking) while two district and borough councils (Elmbridge and Mole Valley) and the county council favour two.

The proposal submitted by district and borough councils supporting three unitary councils is underpinned by the following priorities:

- supporting economic growth
- housing infrastructure delivery
- unlocking devolution
- valuing and advocating for Surrey's unique local identities and places
- providing strong democratic accountability, representation and community empowerment
- securing financial efficiency, resilience and the ability to withstand financial shocks
- delivering high-quality, innovative and sustainable public services that are responsive to local need and that enable wider public sector reform

If the formation of three unitary councils is approved, Spelthorne Council would join with Elmbridge and Runnymede Councils. The government is expected to make a decision in the autumn.

A government consultation will open this summer for residents to have their say - full details will be added to the web pages listed below and paper copies will also be made available.

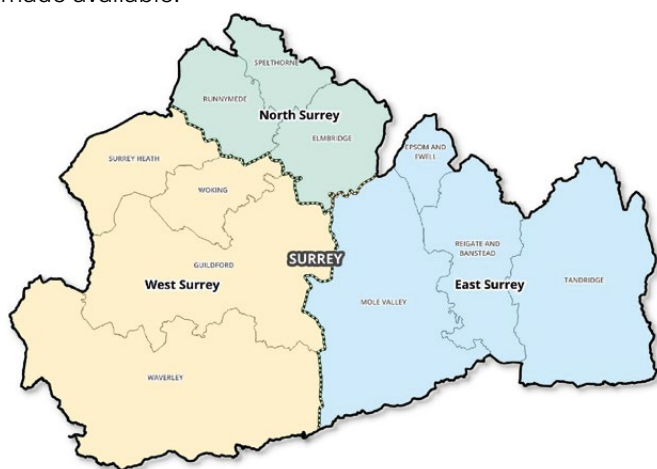


Image credit: Runnymede Borough Council



Best Value Inspection

Following a Best Value Inspection in 2024 which identified a number of serious concerns with the operation of the Council, the Government has appointed Commissioners to oversee the running of Spelthorne Borough Council. The team - Lesley Seary (Lead Commissioner), Peter Robinson, Deborah McLaughlin and Mervyn Greer (Commissioners) and are accountable to the Secretary of State to carry out the following functions:

- to strengthen the commercial decision making, regeneration, property management and procurement functions of the Authority
- to deliver financial sustainability by closing any short or long-term budget gaps and reducing the Authority's external borrowing
- transformation of council services to achieve value for money and financial sustainability, taking account of any decisions relating to proposals for unitary local government in Surrey
- ensure the Council has the right skills and structures to make ongoing improvements across the entire organisation

Most decisions will continue to be made by the Authority, but with the oversight of the Commissioners.

More information is available on the Council's website at www.spelthorne.gov.uk/governmentintervention or www.gov.uk/government/collections/best-value-inspection-spelthorne-borough-council. You can contact the Commissioners directly at Commissioners.Team@spelthorne.gov.uk

For more information about Local Government Reorganisation, visit www.surreylgrhub.org or www.spelthorne.gov.uk/LGR



Spelthorne honours volunteers

Spelthorne Borough Council paid tribute to 18 residents for their voluntary service in the Borough at the Civic Awards ceremony on Monday 7 April.

Spelthorne Civic Awards Trust recognises individuals who have benefitted the local community by giving at least 12 years' voluntary service in the Borough, and letters of commendation are given to those who have done a further 10 years. Congratulations to the following:

Civic Awards

- Devraj Acharya, supporting the Nepalese community
- James Ayling, 3rd Staines Scouts and Spelthorne Explorers
- Daphne Barrett, Sunbury Methodist Church Rainbows and Sunday School
- John Biggs, 6th Staines Scouts and Spelthorne Scout Active Support
- Bev J Bradbury, Staines to Street Angels, Staines Town Chaplaincy and more
- John Carey, Lower Sunbury Business Community
- Zulay Cederberg, Bhakti Yoga and Feed Them All

- Justin Daltrey, 1st Shepperton Scouts
- Robert Evans OBE, Ashford Cricket Club, Surrey Playing Fields and more
- Alex Forrester, Spelthorne & Runnymede Mediation, Shepperton and Staines Rotary
- Joan Gardam, Spelthorne U3A, Spelthorne Walking for Health and Preservation of Staines Moor
- Samantha Henderson, Halliford, Charlton and Shepperton litter picking
- Ken Snaith, Shepperton Residents Association
- Anna Vassallo, Shepperton Butterflies, Rainbows and Brownies
- Gill Wilkinson, District Commissioner Girlguiding Staines and Services to Paxmead

Letter of Commendation

- Jo Gardner, Spelthorne Young Voices and Proms Festival Choir

Community Award

- Monica Jones, Village Matters
- Vanessa Welch, Greeno Community Centre

Ashford Helping Hands

We are a small group of volunteers giving help to elderly or vulnerable people living in the TW15 Ashford area. We did more than 800 jobs for our clients last year, including transport to medical appointments,

shopping, home visiting, minor household repairs and light gardening.

We would love to help even more people if we could, but are always short of volunteers. Why not join us? Whether you have a lot of time to spare or just a little, you'll be very welcome and can choose exactly what sort of help you want to give.

For more information, visit www.ashfordhelpinghands.co.uk or call us on 07754 083502, weekdays 9am - 11am



Cancer support group

The Patient Cancer Support Group meets at 1.30pm on the 2nd Tuesday of each month at Shepperton Medical Practice. The members support each other in a friendly and informal atmosphere and guest speakers are often invited.

The group has been running independently from the Practice since 2018 and is open to all cancer patients, family members, carers and those who have lost loved ones to cancer. You will be assured of a warm welcome. Tea and coffee provided.

Please come and join us irrespective of where you live.

For more information, email Andy at thepatientcancergroup@gmail.com

Staines Parochial Charity

Staines Parochial Charity will be allocating their annual financial grants in the autumn to local residents who are facing financial difficulties due to problems such as poor health, disability, low income or homelessness. Relevant charities can also apply.

To be eligible for a grant, you must have lived in the Staines area for at least two years (or in the case of charities, been active in Staines for at least two years).

The deadline for completed applications is Monday 6 October.



To request an application form, email the Secretary, June Stillwell, at june.stillwell@btinternet.com or call 01784 463013

The King's Award for Voluntary Service

Two local groups, The Revelaires Variety Group and Spelthorne Litter Pickers were presented with the King's Award for Voluntary service by the Lord-Lieutenant of Surrey, Michael More-Molyneux, in April. They were two of just nine groups in Surrey to receive the award which is the highest honour given to voluntary groups in the UK.

The Revelaires are a group of volunteers based in Ashford who have brought joy and theatre to care homes, day centres and charities across Surrey with their musical entertainment since 1953. Their shows offer a magical escape for those who can't access live performances. They also perform an annual show at the Riverside Arts Centre in Sunbury-on-Thames to raise funds and their next performance is MUSIC MUSIC MUSIC on 26 and 27 September 2025 - an evening of musical entertainment from various genres including country, rock and pop. They are always looking for new

members – email sheilamarsden2000@yahoo.co.uk for more information.

The second group, Spelthorne Litter Pickers, was formed in 2020 and organise volunteers for litter picking events throughout the borough, working closely with the Council. They create a sense of community involvement by including children, young people and businesses in their voluntary work. The group enables people to get out of doors, be physically active and meet new people through group events and social media. Their aim is to make Spelthorne the cleanest, greenest, borough in the UK. They recently took



part in the Great British Spring Clean and collected a staggering 652 bags of rubbish.

Congratulations and thank you to both groups. Follow them on Facebook to find out more about their work.



Spelthorne Orchestra

Spelthorne Orchestra, previously known as The Ashford Orchestra, was founded in the 1930s and now attracts string and woodwind musicians of all abilities. The orchestra aims to make classical music approachable and enjoyable for all.

They meet at the parish centre, St Nicholas Church Shepperton from 7.15pm until 9pm each Tuesday during term-time for rehearsals, under the guidance of experienced conductor, David Bruce.

The Orchestra performs three or four concerts a year to raise money for various local charities and organisations and most recently raised funds for Hilary's Hut, which



supports the over 45s to make new friendships. Recently around £2,000 a year has been raised for local causes and last year they were presented with the Best Fundraiser for the St Nicholas Tower appeal award.

The orchestra is currently looking for additional musicians, particularly violin, oboe, viola, bassoon and double bass players. Contact the orchestra on Facebook, email steve.husband@bcs.org or just turn up to a rehearsal to reignite your passion for music and a strong community spirit.

WorkWell

Do you know someone who needs support to get back to work or stay in work?

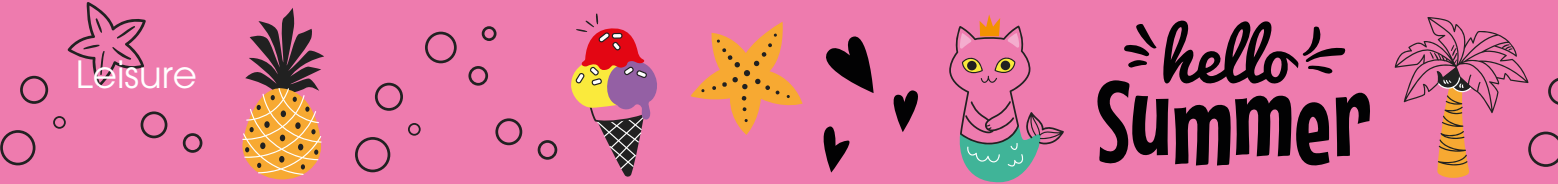
WorkWell is a government-funded programme providing free one-to-one work and health coaching. It's open to anyone aged 16+ in Surrey.

WorkWell coaches work with you to get the right support for your needs, whether that's employment and skills, mental health and wellbeing or physical activity plans. It's free and simple to get started.



Visit Facebook for details of forthcoming concerts and orchestra news or to let them know if your charity/organisation would like to host a fundraising concert

To find out more, visit www.surreycc.gov.uk/workwell or contact the Spelthorne Jobs and Skills Hub at info@spelthornejobsandskillshub.com or call 01784 448564



Free outdoor theatre events in Staines

Get ready for a spectacular summer of live entertainment as Visit Staines Business Improvement District brings a brand-new outdoor theatre season to the heart of Staines-upon-Thames.

Running every Thursday from 31 July to 28 August, this family-friendly series of shows promises laughter, adventure and magical storytelling – all completely free to attend! Whether you're a local or just visiting, it's the perfect way to spend a summer afternoon by the riverside.

The 2025 outdoor theatre line-up:

- 31 July – Mrs Armitage on Wheels by Scoot Theatre
- 7 August – Dirt by She Said Jump
- 14 August – The Twits by Historical Promotions
- 21 August – Caspian's Storm by LAS Theatre
- 28 August – Everywhere's a Beach by Hikapee Theatre

Showtimes and venue:

Each performance will take place in outdoor locations across Staines-upon-Thames, with timings and locations listed on the Visit Staines website.

Free entry – booking recommended

Although these performances are free to enjoy, spaces may be limited for some performances – so head to www.visitstaines.co.uk to reserve your spot and find full details.

Bring a blanket, pack a picnic, and settle in for a summer of storytelling. Whether you're five or ninety-five, there's something for everyone in this vibrant outdoor season.

Our outdoor theatre season is kindly supported by Spelthorne Borough Council.



Visit www.visitstaines.co.uk for full details and to reserve tickets



Music in the Park

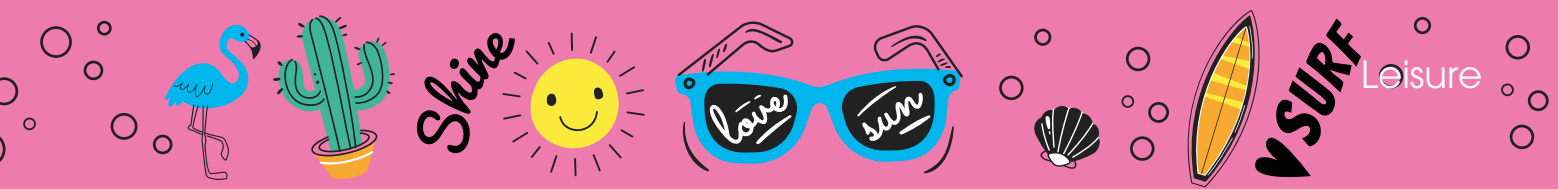
Join us for a free afternoon of music in the beautiful surroundings of either The Walled Garden, Thames Street, Sunbury-on-Thames, TW16 6AB or The Lammas Band Stand, Lammas Recreation Ground, Wraysbury Road, Staines-upon-Thames, TW18 4XZ.

All performances start at 2pm and finish at 4pm. Please bring your own chairs or picnic blankets. Refreshments are available to purchase at both venues.

Date	Venue	Performer
Sunday 6 July	The Walled Garden	Saxophony
Sunday 13 July	Lammas Band Stand	Staines Lammas Band
Sunday 20 July	Walled Garden	British Airways Brass Band
Sunday 3 August	The Walled Garden	Rock Choir
Sunday 10 August	Lammas Band Stand	Staines Brass
Sunday 17 August	The Walled Garden	Dale Harris & Sophie Varlow
Sunday 31 August	The Walled Garden	Linden Wind Orchestra

Walled Garden parking: If you are physically able to, please park in Green Street car park (TW16 6RA) and walk across Sunbury Park or use Thames Street car park (TW16 5QF).

Visit www.spelthorne.gov.uk/music, email leisure@spelthorne.gov.uk or call 01784 446433



Saturday 5 July, 11.30am-4.30pm

Laleham Village Fair

Summer Fair for the local community with displays, classic vehicles, live music, food and drinks, activities and family fun for all ages. Money raised by the fair will be used by the Residents' Association to fund improvements in and around the village.

Venue: Laleham Recreation Ground and The Lucan Pavilion, The Broadway, Laleham, TW18 1RZ

Cost: Free

For more information, visit <https://lalehamresidentsassociation.org.uk/lraevents>



Sunday 6 July, 9.30am-11.30am

LTA Barclays Big Tennis Weekend

Free taster tennis session with the coaching team, all equipment supplied. Fun events, ball machine, serve speed gun and more. Please email us to book.

Venue: Spelthorne Community Tennis Centre, Fordbridge Park, Ashford, TW15 3SJ

Cost: Free

For more information, visit <https://tennisspelthorne.com> or email tennisspelthorne@gmail.com



Saturday 26 July, 10am-2pm Spelthorne Resource Centre: Summer Art Open Day

Join us for summer inspired arts and crafts. For families with children aged 4-11 years. Children must be accompanied by an adult.

Venue: Spelthorne Resource Centre, Staines Park, Commercial Road, Staines-upon-Thames, TW18 2QJ

Cost: £1 per child, 50p for siblings

For more information, visit www.spelthorne.gov.uk/resourcecentre or call 01784 461769

Saturday 9 August, 9.30am-5.30pm

Sunbury Amateur Regatta

Come along to the Sunbury Regatta to see Sunbury Skiff and Punting Club compete with other local clubs in this annual event for the local community.

Venue: Desborough Sailing Club, Ferry Lane, Shepperton, TW17 9LQ

Cost: Free

For more information, visit www.sunburyskiff.club or email sunburyjuniorregatta@outlook.com

Sunday 10 August, 10am-5.30pm

Sunbury Amateur Regatta - Children's Regatta

The regatta is open to children from age of 7-15. If you would like to learn how to row and compete in the regatta, practice sessions begin on Sunday 6 July and continue every Sunday until the regatta on 10 August.

Venue: Desborough Sailing Club, Ferry Lane, Shepperton, TW17 9LQ

Cost: Free

For more information, visit www.sunburyskiff.club or email sunburyjuniorregatta@outlook.com



**Open until early September
Lammas splash park**

The children's splash park at Lammas Park in Staines-upon-Thames is open from 10am-1pm and 2pm-4.30pm, Saturday to Thursday (closed on Fridays), until the beginning of September.

Venue: Lammas Recreation Park, Wraysbury Rd, Staines-upon-Thames, TW18 4UA

Cost: Free

For more information about the facilities at Lammas Park, visit www.spelthorne.gov.uk/lammas



Sunday 28 September, 11am-3pm

Stanwell Events Funday

A fun filled day for all the family including free arts and crafts, community stalls and much more.

Venue: Long Lane Recreation Ground, Stanwell, TW19 7ER

Cost: Free

For more information, visit www.stanwellevents.org.uk or email anna_marie@stanwellevents.org.uk

VISIT STAINES BID IN PARTNERSHIP WITH
SPELTHORNE BOROUGH COUNCIL PRESENTS



OUTDOOR Theatre SEASON 2025

Join us this summer in Staines for
FREE Outdoor Theatre performances
every Thursday afternoon during
the school holidays!

SCAN BELOW TO FIND OUT MORE



**VISIT
STAINES**
STAINES-UPON-THAMES BID



visitstaines.co.uk



Sunbury Embroidery Gallery

The Sunbury Embroidery Gallery recently celebrated the 25th anniversary of the Sunbury Millennium Embroidery with a Celebratory Community Exhibition, an extraordinary creation which featured exquisite, stitched flowers crafted by local groups including the Afghan Women's Group and CAMEO Day Centres, under the artistic direction of Izi Harris. Accompanying the exhibition was a collection of inspiring poetry from Kenyngton Manor Primary School, developed with poet Jan Noble, and a video documenting workshops delivered by IAMFlow at Manor Mead School.

At their recent open weekend, visitors were given tours of the Walled Garden and learnt about the Sunbury Millennium Embroidery, the café's Surplus to Supper initiative, membership opportunities and the Gallery's future plans.

The Sunbury Embroidery Gallery and Café is open from 10.30am - 4pm Tuesday to Sunday (closed Mondays). Thank you to all the volunteers who generously give their time at the Gallery and Café, warmly welcoming both familiar faces and new visitors.

25 Years of
THE SUNBURY
MILLENNIUM
EMBROIDERY



For more information about upcoming workshop, talks and exhibitions, visit www.sunburygallery.org

Plans progressing for new Library Hub in Staines-upon-Thames

The extensive refurbishment of the former Decathlon outlet in the Elmsleigh Centre into a sizeable community Library Hub, with investment from Surrey County Council and Spelthorne Borough Council, will provide residents with a modern, fully accessible and inclusive space for all to use. Doors are scheduled to open in August 2025.

The new Library Hub creates a flagship community space for all, providing public services, support services, new flexible spaces to host community events and activities, all under one roof. whether that's for meetings or even larger spaces available for exhibitions and

performances. The design is dyslexia, dementia and autism friendly to ensure the hub is accessible for all.

Inside you'll find Citizens Advice, Spelthorne Museum, Voluntary Support North Surrey, Surrey County Council registrations service, and a new space for the Arts Council England funded Escalate Arts project. And of course a new flagship modern library space.

It's hoped this community facility in the heart of Staines-upon-Thames will become a much loved communal space for all ages to use, whether to work, study, get support or a place to meet friends and relax.

For more information, visit www.surreycc.gov.uk/staineshub

Spelthorne Cycling for Health Scheme

Free, relaxed, casual bike rides led by trained volunteers in and around Spelthorne. Aimed at adults who want to get active and stay active, cycle in a social group and explore the local area. Rides take place during the week (lunchtime rides recently introduced also) and are between 6 and 13 miles. All rides are at a gentle pace and they are a great way to socialise. To join the rides, you need your own bike, a helmet and comfortable clothes and footwear. Please note, the rides are designed for adults only and not suitable for children.

For information and to register your interest, visit www.spelthorne.gov.uk/cyclingforhealth, email leisure@spelthorne.gov.uk or call 01784 446433

Staines 10K

The Mayor of Spelthorne got runners underway for the start of the 2025 Staines 10K on Sunday 11 May.

The race, organised by Staines Strollers and Runnymede Runners, with support from Spelthorne Borough Council, saw over 700 runners complete the course. The men's race was won by Paul Boddey of Eton Manor Athletics Club who completed the course in 34 minutes and 52 seconds. The women's race was won by Holly Wilkinson from Ealing Eagles Running Club in 39 minutes 16 seconds.

Thank you to this year's sponsors and the dozens of volunteers who gave their time to ensure the event ran smoothly.

The full results are available on the Staines 10k website at www.staines10k.co.uk and details of the 2026 race will be available there in the autumn (entries open in February 2026).



Photo: Courtesy of Laleham Camera Club

LOOKING FOR A TRUSTED PARTNER IN YOUR FINANCIAL JOURNEY?



**KPN Accounting: Your
success, our expertise.**

We offer tailored services to
meet your needs:

- ✓ Business advisory
- ✓ Benefits management
- ✓ Compliance services
- ✓ Individual services



☎ 077-320-00568 ☎ 033-004-36441
 🌐 www.kpnaccounting.co.uk ✉ info@kpnaccounting.co.uk
 📍 Centurion House, London Road, Staines-Upon-Thames, TW18 4AX

ST PAUL'S CATHOLIC COLLEGE

Providing Education for the Diocese of Westminster



*"Teachers' subject
knowledge is a strength of
the school. Lessons are of high
quality and pupils are
supported in developing
their knowledge and
understanding."*

Ofsted 2024

*"The worship and
prayer life of the school
is firmly rooted in the
liturgical year and reflects
the richness of the
Catholic tradition."*
Diocese Report

OPEN EVENTS

Admission to Year 7 in 2025

Open Mornings

Thursday 26th September, 3rd October and 10th October

Tours from 8.45am, 9.00am and 9.15am

No appointment necessary

Open Evening

Thursday 26th September from 5.30 pm - 7.30 pm

Headteacher Evening Address at 5.45pm and 6.30 pm

Enquiries

Year 7

T: 01932 754213

E: admissions@st-pauls.surrey.sch.uk

Sixth Form

T: 01932 754203

E: sixthform@st-pauls.surrey.sch.uk

Sixth Form Open Evening

Admission to Year 12 in 2025

Wednesday 2nd October from 6.00pm to 8.00pm

Head of Sixth Form Evening Address at 6.30pm

St Paul's Catholic College,
Manor Lane, Sunbury on Thames, Surrey, TW16 6JE
www.st-pauls.surrey.sch.uk



*Driveway
Specialists*



*Laleham Landscapes
The Complete Garden Service*

- Artificial Lawn,
- Construction
- Design
- Decking & Patios
- Driveways
- Fencing
- Maintenance
- Paving & Brickwork
- Resin Bonding
- Tree Surgery
- Turfing - Ground Works & Lawn Care

Revive UR Drive

*The Driveway Refurbishment Experts
Driveways, Patios and Paths Expertly Installed
or Professionally Restored, Cleaned and Sealed*

01784 255 094

07961 523 235



**sales@lalehamlandscapes.co.uk
www.lalehamlandscapes.co.uk**



Residents' associations

Residents' associations are a great way to get involved with your community. Acting as a group gives residents a stronger voice about local issues, helps organisations to communicate with residents and can strengthen community spirit. You can find a list of residents' associations on our website but if you don't have one in your area, why not set one up:

- talk to people in the area to find out if they are interested
- consider whether the group will tackle one specific issue or a range of issues
- decide which area you will cover
- consider the skills required to help the group achieve its goals
- elect a committee and agree a constitution
- organise publicity to tell people about the group
- let Spelthorne Council know so you can be invited to residents' meetings

For more information, visit www.spelthorne.gov.uk/RA or call 01784 446433

Ashford Residents' Association

We believe Ashford should be a thriving community that is worth fighting for. With families and residents of all ages we can create a secure, inclusive and welcoming environment.

We invite everyone living in Ashford to unite, make your voices heard and shape our town's future alongside local leaders. Together, we can ensure our community plays a key role in decisions that truly matter.



To join, email info@ashfordra.co.uk, visit <https://ashfordra.co.uk>, or find us on Nextdoor and Facebook

Daybreak respite care

At Daybreak we offer respite care and support to people in the community with chronic illnesses, physical disabilities, dementia or social isolation.

We give carers a well-earned break for five hours on a Tuesday, while their family member receives respite care of the highest standard. We provide a happy and vibrant environment where people can enjoy some company, a home cooked meal and regular musical entertainment. Our provision of care includes blood pressure and sugar monitoring, continence care,



dietary needs, personal care and supervision of prescribed medication. Each guest has an individual care plan.

We are based at St. Peter's Church Hall on the Laleham Road in Staines and are open from 10am – 3pm every Tuesday (excluding Christmas and Easter). The cost is £30 per day which includes a two-course lunch and all refreshments.

For more information, email Sally Kidd at sallykdaybreak@gmail.com or call 077610 47930 (Monday Friday)

Spelthorne in Bloom

More than 120 gardeners and pupils from local primary schools met at Squires Garden Centre in Halliford on 3 April to launch the annual Spelthorne in Bloom campaign and to recognise the winners of the Children's Poster Competition for 2025.

Sarah Squire, Chair of Squire's Garden Centre, welcomed the guests and thanked them for their help in keeping Spelthorne looking beautiful. Nick Wood-Dow, Chair of the Spelthorne in Bloom Committee, introduced the guest speakers, Sgt. Steve Burgess at Surrey Police, Peter Cluff, the High



Sheriff of Surrey, Terry Collier, Deputy CEO at Spelthorne Council and the Mayor of Spelthorne, Cllr Med Buck.

The overall winner was Isobelle from St Michael Primary School in Ashford whose beautiful 'life on the river' themed design features on this year's competition entry forms and posters. Isobelle and the other winners were presented with prizes by the Mayor.

Category	Winner
Overall winner	Isobelle, age 7, St Michael Catholic School
SEND poster winner	Phoebe, age 6, St Michael Catholic School
Hand drawn posters, age 4 - 6	Hugo, age 6, Hawkedale Primary School
Hand drawn posters, age 7 - 8	Isobelle, age 7, St Michael Catholic School
Hand drawn posters, age 9 - 11	Julia, age 11, Our Lady of the Rosary School
Computer generated posters	Llyana, age 10, Staines Preparatory School

Judging for Spelthorne in Bloom will soon take place and the winners will be announced at the awards ceremony in November.

Help at Home

“It is like having a friend come round to help”



**Our Help at Home service is more than just cleaning
We are here to make life easier for you**

Help at Home is your doorway into a world of advice & information for people aged 50+. At Age UK Surrey we provide a range of services and activities to help you get the most out of later life.



Call now 01483 503414
enquiries@ageuksurrey.org.uk
www.ageuk.org.uk/surrey



Reg. Charity No: 1036450

1SB0625

YOUR LOCAL ELECTRICIAN

Do you want a quick response?

No job too big or too small.
When you need an electrical fault/
problem solved, we will solve it for you.

Contact Richard for a FREE survey,
FREE consultation, FREE estimate.
For Your **LOCAL QUALIFIED
ELECTRICIAN, NICEIC Approved.**



**CALL RICHARD – 01784849181
or 07875958912**
Email – richard@electricalttltd.co.uk



Leaks & Bursts, Boiler breakdowns, servicing & installs. Toilets & taps.
Radiators & pumps. Tanks & overflows. Baths & showers.

- ✓ Free estimates
- ✓ Fixed upfront prices
- ✓ Senior citizen discounts
- ✓ Work guaranteed
- ✓ Fully insured
- ✓ No call out charge

Call Stuart on 01784 279262

Covering: Staines, Shepperton, Ashford, Sunbury, Wraysbury, Laleham, Egham & Stanwell.



Wildlife management in Spelthorne

The 2023 State of Nature Report declared that the UK is among the most nature-depleted countries in the world, with animal species declining by an estimated 19% since 1970, and 16% of species now threatened with extinction.

Spelthorne Council is promoting nature recovery by using wildlife-friendly management across its sites. Here are three commonly misunderstood site management practices that actually benefit wildlife.

“Fallen trees in the river cause flooding and harm fish”

Though logs and trees in watercourses may seem messy, they provide vital benefits to wildlife and water flow. Natural woody debris supports aquatic invertebrates, which in turn sustain amphibians, fish, birds, and reptiles. These materials also



offer shade, nesting spots and spawning areas.

Contrary to old misconceptions, fallen wood can help reduce flood risk by slowing and varying water flow - a practice now intentionally used in some waterways.

“Someone forgot to take the dead tree away”



You may notice more deadwood in parks such as felled trunks, log piles, or standing monoliths.

This is part of the Council's strategy to boost biodiversity. In the wild, fungi and invertebrates have adapted to rely on dead wood to complete their life cycles. For example, Stag Beetle larvae spend seven years in decaying wood before emerging. By supporting these species, we also help sustain the wildlife that depends on them.



Staines Park, Photo by John Want

“Ivy is suffocating the trees”

Ivy, though often mistaken for strangling trees and harming ecosystems, actually supports at least 50 wildlife species. It isn't parasitic but uses trees for support. However, in windy conditions or on weakened trees, excessive ivy can increase the risk of tree fall. On older trees, it may be removed to assess decay. As an evergreen, ivy provides vital year-round shelter for birds, food for insects, and winter berries when other sources are scarce. Some butterfly species, like the Holly Blue, rely on it for their lifecycle.



For more information about the methods we use to improve biodiversity in Spelthorne, visit www.spelthorne.gov.uk/biodiversity



BOOK A
NO OBLIGATION
VALUATION
NOW!

Scan me to discover how much your house is worth!



THE GOOD ESTATE AGENT

SALES & LETTINGS

THE GOOD ESTATE AGENT SUNBURY

Covering Sunbury, Hampton, Teddington,
Ashford, Shepperton, Feltham and Staines

Zoopla
Greater property search

rightmove
find your happy

TDS
Teddington District School
member

naaa | propertymark
PROTECTED

arfa | propertymark
PROTECTED

- Full property sales and lettings service, offering
- Very competitive Sales and Lettings fees and no long contract tie in.
- Accessibility to your account manager 7 days a week and evenings.
- Fully accompanied viewings 7 days a week.
- Enhanced marketing through Social media as well as major platforms.
- We help organise additional services and quotes for all your needs eg mortgages, surveyors, EPC, solicitors, cleaning, removals, plumbing, electrical work etc.
- Proactive Sales progression with solicitors right to completion.

markcollis@thegoodea.co.uk 07887 481047
or visit us at 101 Green Street Lower Sunbury TW16 6RD

ABTA
Travel with confidence



THE GOOD TRAVEL AGENT



SEARCHING FOR YOUR NEXT HOLIDAY SHOULDN'T BE STRESSFUL...

Let me take the stress away, tell me all about your holiday requirements and let me take care of the rest. With access to 100's of suppliers I will do the shopping around for you to ensure you get the best holiday possible

As an independent personal travel agent I have access to 100's of suppliers which means I can shop around to get you the best possible deal! This includes being able to search tour operators that are not available directly to the public, meaning I have access to things that are not available on the internet.

www.thegoodtravelagent.co.uk/markcollis
sunbury@thegood.co.uk



ST JAMES

Senior Boys' School

BOOK NOW:



The open
day for
open minds.

stjamesboys.co.uk

JOIN US

Saturday
27 September

9.00am - 12.30pm

Church Road, Ashford, Surrey TW15 3DZ

Shared Prosperity Fund

Spelthorne Borough Council has successfully delivered six projects using its share of the government's Shared Prosperity Funding which provided £2.6 billion of new funding for local investment to all areas of the UK as part of its Levelling Up agenda, designed to increase life chances across the country. Spelthorne was allocated £1m over a three-year period.

Jobs and Skills Hub:

The Hub has been supporting residents of all ages to improve their employability, draft CVs, prepare for interviews, access support to improve their confidence and apply for jobs and apprenticeships.

Urban garden and food growth:

Community Gardens were created at the Salvation Army Community Garden in Ashford, Our Lady of the Rosary School in Staines and Staines Railway Station with support from Talking Tree. Supplies and equipment were also given to Sunbury Community Allotments.

Cultural kick starter:

The cultural kick starter programme successfully delivered creative

workshops for young people, families and schools. Seed funds were also awarded to 15 local artists and organisations to participate in Spelthorne Artists Unlocked.

Going green:

Two new electric buses were purchased for community transport. Four solar powered rubbish/recycling bins installed in Staines high street.

Upskill communities:

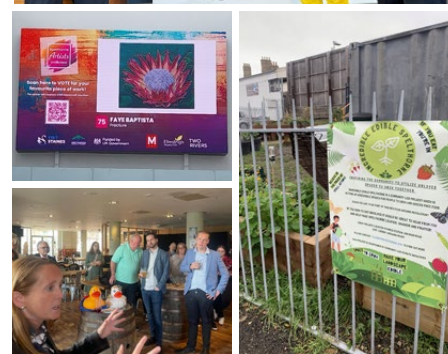
Voluntary Support North Surrey received funding to help voluntary groups develop skills to apply for external grant funding. This resulted in £460K being awarded with an additional £1.5 million worth of applications awaiting a decision.

Climate change audits:

Climate change and sustainability audits were provided for small and medium businesses across the Borough, enabling them to reduce their carbon emissions and lower energy costs, resulting in over £100,000 in savings.

Business growth:

This project helped 80 businesses overcome growth barriers by



providing mentoring, workshops and webinars on identifying new markets, digital transformation, new product development, improving processes and innovation.

Spelthorne Design Code

What's been happening?

For the last year, the Spelthorne Design Code team have been engaging local people and welcoming their views on the design of future development in the Borough. The team have been speaking with residents through a series of online and in-person engagement opportunities, including a demographically representative Citizens' Panel. To gain an inside look at the Panel's community engagement sessions, you can watch a short video featuring your fellow residents on the Spelthorne Design Code engagement hub.

This Panel met for the last time in March 2025 to see how residents have already helped shape and to



share their thoughts on the first draft of the Code. The wider community has also been contributing at every stage by giving feedback during the public engagement period on the draft Code.

What's next: how you can get involved

The Design Code project is in Stage 3, the testing phase, where a first draft of the Design Code has been developed and engaged on, with local people and key community stakeholders

having provided feedback. There will soon be an opportunity in early summer for Spelthorne residents to have their say on the final draft of the Code during a statutory consultation. The exact dates for the consultation will be published on the engagement hub and Council's website as soon as they are available. This will be the final opportunity for local people to help shape the design of future development in their Borough before the Code is adopted.

Scan the QR code to go straight to the engagement hub to find out more about the Spelthorne Design Code, learn more about the public engagement so far and subscribe to receive updates on the project. Don't miss the next opportunity to share your views on the Design Code!



You can also contact us by emailing designcode@spelthorne.gov.uk or by calling 01784 444205



Clearwell

mobility



Making Life Easier

Mobility Scooters from **£799***

Powerchairs from **£1,690***

Stairlifts Installed from **£1,790***

Wheeled Walkers from **£84.99***

Staines
11-17 Kingston Road, TW18 4QX
Mon - Sat 9-5pm
01784 440 044

Woking
105-107 Goldsworth Road, GU21 6LJ
Mon-Sat 9-5pm
01483 767 733

www.clearwellmobility.co.uk

*Prices quoted exclude VAT and are available to customers with a long term medical condition.

FREE 2025 Brochure

CHIIN

✂ Name _____

Address _____

Postcode _____

Post to: FREEPOST CLEARWELL MOBILITY



Scan for website






Enabling Your Independence

Mole Valley Life specialises in providing lifeline alarms and support to individuals who require some additional assistance and reassurance in or out of the home, 24 hours a day, 7 days a week, 365 days a year.



- ✓ Reassurance for you and your family
- ✓ 24/7 support at the touch of a button
- ✓ Wellbeing calls and TrustID assistance bands
- ✓ Key Safe Installation
- ✓ Friendly, specialised team
- ✓ based in Surrey
- ✓ NO hidden fees



GET IN TOUCH



You can find more information on the full range of products at:
www.molevalleylife.co.uk/independent

Speak to our trained team members **01372 204500**, SMS Text **07800 000385** or email us at mvlife@molevalley.gov.uk



Mole Valley Life is brought to you by:



In association with:



Hear here

Spelthorne Council's Community Centres now offer free services for residents with NHS hearing aids. These include cleaning and retubing, battery replacement, fitting checks, maintenance advice and referrals to the hospital for issues which can't be resolved. Please contact the centre to book a place:



Fordbridge Centre, Ashford	First and third Friday of each month	10am - 12noon	01784 243880 fordbridgecentre@spelthorne.gov.uk
Greeno Centre, Shepperton	Fourth Wednesday of each month	10am - 12noon	01932 246173 greenocentre@spelthorne.gov.uk
Staines Community Centre	Second Thursday of each month	10am - 12noon	01784 463073 stainescommunitycentre@spelthorne.gov.uk

Social prescribing help available in Spelthorne

Social prescribing is a service designed to support residents who have social, emotional or practical needs which cannot be addressed by a GP. Spelthorne Council offers one-to-one appointments with a Social Prescribing Link Worker who can talk to residents about factors affecting their health and organise suitable assistance via a network of local community and voluntary organisations. They can help with a wide range of needs, including:

- remaining independent at home
- opportunities for social interaction



- practical help, such as cooking, transport and shopping
- physical activity
- benefits and budgeting advice
- housing options advice and home adaptations
- mental or emotional support
- support around a disability

The service is currently available to residents aged over 18 who are registered with a Spelthorne GP.

To find out more or refer yourself for an appointment, visit www.spelthorne.gov.uk/socialprescribing, email socialprescribing@spelthorne.gov.uk or call **01784 446464**. You can also speak to your GP about getting a referral

Community Centres

Our Community Centres in Ashford, Shepperton and Staines provide a wide range of activities including yoga, pilates, quizzes, art, bridge, computer classes, singing, bingo, dancing, book club and language classes. Some also offer hairdressing, chiropody and beautician services. They are great places to have a bite to eat, meet new people or try some activities.

For information about opening hours, activities and costs, visit www.spelthorne.gov.uk/communitycentres, email independentliving@spelthorne.gov.uk or call **01784 446389**



If you are caring for someone with a condition such as dementia, sight loss or immobility, you may be interested to know that the Greeno Centre in Shepperton runs a daily OPAL group from 9.30am-3.30pm for people with support needs. Our aim is to offer social interaction and stimulating activities, while you get some time to yourself knowing that your loved one is being well looked after. There is a daily charge to attend the group which can be paid privately or as part of a social care package if eligible.

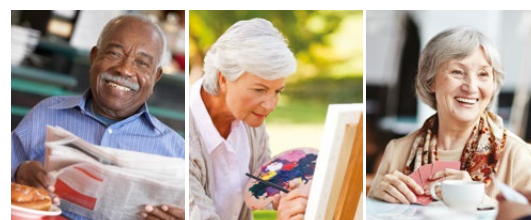
For more information, email opal@spelthorne.gov.uk or call **01932 246173**

Meals on Wheels



If you are struggling to prepare meals for any reason, our Meals on Wheels service can help. You'll receive a hot main course and pudding and can also order a sandwich to eat later. We cater for dietary requirements and you can choose the days which suit you.

For further information, email m.wheels@spelthorne.gov.uk or call **01784 444265**



Just Clear®

and leave all the hard work to us

Rated 5 out of 5 on Trustpilot



Your trusted local, award winning clearance company
based here in Staines Upon Thames

House
Garage
Commercial
Office
Fly Tip
Probate
Rubbish



Hoarding Clearance Experts

☎ 03330 344 212

or

www.justclear.com/staines

for 10% off please quote Just Clear PROMO

Winner of Spelthorne Business Awards 2023

