



years serving our local communities

1974 - 2024

5 Introducing the new Mayor

10-11 Summer in Spelthorne

13-16 Residents' survey centre page pull-out

On **Saturday 28 September**, discover what makes St James Senior Boys' school in Ashford unique.

Book now
9.00 am
12.30 pm

Rooted in our philosophical traditions, we support and nurture the intellectual, emotional and spiritual development of boys from 11-18.

www.stjameschools.co.uk

St James Senior Boys' School, Church Road, Ashford, Surrey TW15 3DZ



Letter from the Leader

Dear Residents,

I can hardly believe we are marking 50 years since Spelthorne Borough Council was established. We have already held some celebrations and have more planned over the summer if you can join us.

We welcomed Cllr Med Buck as our new Mayor at the Annual Council Meeting which is held each May to elect the council leaders and committee members. He brings a wealth of experience and a passion for supporting the community, and will be a real asset for Spelthorne. You can read more about the Mayor on page 5.

We always want to hear your views on how we are performing as a council and have launched a residents' survey on a range of aspects including how satisfied you are with your local area, the services we provide, and how safe you feel in the community. Having a really good understanding of your views, ideas and experiences will help us make Spelthorne a better place. If you do not take part, we are unable to make the changes that are required, so please take the opportunity to have your say. **Your feedback is vital** - by working together, we can make a difference.

There is so much going on in Spelthorne during the summer and you can find details about events taking place near you on and pages 11 and 12. These range from music and outdoor theatre, to treasure hunts and art sessions for the kids. Many of the events are free to attend.

Our new leisure centre, Eclipse, is nearly completed and we are so excited that we'll soon be opening the doors to residents. It is shaping up to be a fantastic centre with amazing facilities which will encourage more residents to participate in sport and physical activity.

I hope you have a wonderful summer and get the opportunity to come along to one of our events. If you have any ideas or concerns you would like to discuss with me, please do not hesitate to get in touch.

Cllr Joanne Sexton, Leader of the Council

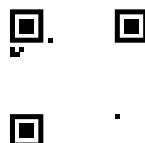
✉ cllr.sexton@spelthorne.gov.uk



Report it, so we can sort it

Let us know if you see an issue in your neighbourhood so we can deal with it quickly. We want residents to work with us to make Spelthorne a clean place to live and work. In 2023 we received a total of 794 reports via our website relating to neighbourhood issues, with fly-tipping receiving the most complaints.

You can report problems involving litter, graffiti, dog fouling, bonfires, noise, fly-tipping, abandoned vehicles and other problems using the QR code, our online form at www.spelthorne.gov.uk/report or call us on 01784 451499.



Contents

Planning enforcement	6
Residents' survey	13-16
Food safety	24

Leisure

Eclipse Leisure Centre	9
Parks tennis	9
Summer events	10-11

Independent Living

Community centres, meals on wheels, grants	22
--	----

Community

Youth awards	21
Update from Police Commander	24

Environment

The hedgehog project	18
Sustainable gardens	19

Contacts us:

- 🌐 www.spelthorne.gov.uk
- ☎ 01784 451499
- ✉ Spelthorne Borough Council, Council Offices, Knowle Green, Staines-upon-Thames, TW18 1XB

Follow us on social media:

- 📘 @spelthornebc
- ✂ @spelthornebc
- 📷 @spelthorneboroughcouncil
- 🏠 Spelthorne Borough Council

📧 **Sign up to our monthly newsletter:** www.spelthorne.gov.uk/enews

👤 **Sign up to the Customer Portal:** www.spelthorne.gov.uk/customerportal

Bulletin enquiries: 01784 446432 / 01784 444260
Editors: Jennifer Medcraft / Louise King
Design: Tanya Allen
Cover: Spelthorne Borough Council celebrating 50th anniversary crest

Advertising enquiries: Send an email to sue@frontlinedesigners.co.uk or call 07788 672455.

Spelthorne Borough Council does not accept responsibility for, or endorse, any products or services offered by advertisers.

The Bulletin is available in large print and on CD. Please email l.king@spelthorne.gov.uk or call 01784 444260.

The Bulletin is our community magazine produced by Spelthorne Borough Council, delivered free to every home in Spelthorne. Circulation 47,500.

♻️ Printed on recycled paper.

ST PAUL'S CATHOLIC COLLEGE
Providing Education for the Diocese of Westminster



"Teachers' subject knowledge is a strength of the school. Lessons are of high quality and pupils are supported in developing their knowledge and understanding."

Ofsted 2024

"The worship and prayer life of the school is firmly rooted in the liturgical year and reflects the richness of the Catholic tradition."

Diocese Report

OPEN EVENTS

Admission to Year 7 in 2025

Open Mornings

Thursday 26th September, 3rd October and 10th October

Tours from 8.45am, 9.00am and 9.15am

No appointment necessary

Open Evening

Thursday 26th September from 5.30 pm - 7.30 pm

Headteacher Evening Address at 5.45pm and 6.30 pm

Enquiries

Year 7

T: 01932 754213

E: admissions@st-pauls.surrey.sch.uk

Sixth Form

T: 01932 754203

E: sixthform@st-pauls.surrey.sch.uk

Sixth Form Open Evening

Admission to Year 12 in 2025

Wednesday 2nd October from 6.00pm to 8.00pm

Head of Sixth Form Evening Address at 6.30pm

St Paul's Catholic College,
Manor Lane, Sunbury on Thames, Surrey, TW16 6JE
www.st-pauls.surrey.sch.uk



WHY STAGECOACH?

At Stagecoach Performing Arts, we give our students the **creative courage** to embrace life and make the most of their talents and opportunities.

- ▶ 30 years' experience in performing arts teaching
- ▶ Over 600 schools worldwide
- ▶ 1 million children supported to reach their potential
- ▶ Regular national events at iconic theatres
- ▶ Over 22,000 casting opportunities via our talent agency
- ▶ A unique educational framework

Your child will learn how to

SING, DANCE & ACT

while developing a broad range of life skills.

STAGECOACH STAINES

W www.stagecoach.co.uk/staines

☎ 07802800633 E staines@stagecoach.co.uk

Classes are held at Thomas Knivvett College, Stanwell Rd, Ashford TW15 3DU on a Friday after school and Saturday's. Now accepting childcare vouchers



Creative Courage For Life™



Walfinch

INDEPENDENT HOME LIVING



We can arrange care within 24 hours.

Local Home Care

Tailored to You

Covering Shepperton, Staines, Sunbury, Ashford, Wraysbury, Egham, Stanwell.

Walfinch Hampton, Twickenham and Virginia Water

Choose Us For

- ✔ Companionship
- ✔ Alzheimer's/Dementia Care
- ✔ Sitter Assistance
- ✔ Live in Care
- ✔ End of Life Care
- ✔ Respite Care

Your loved ones deserve to remain independent at home where they feel safe. Care homes are not the only answer.



☎ 01784 697 557

☎ 01344 928482

☎ 0204 5064787

lyn.l@walfinch.com

A new Mayor for Spelthorne

Supporting the community is the mission of Spelthorne's new Mayor, Cllr Med Buck. The Mayor took over the chains of office from Cllr Denise Saliagopoulos at the Annual Council Meeting on 23 May. The mayoral role involves presiding over council meetings and representing the authority at civic and ceremonial events. The Mayor will be raising money for four charities during the year:

- Ashford and St Peter's Hospitals' Charity which aims to enhance the hospital environment by providing supplementary equipment or additional services that are above and beyond what the NHS can provide.
- Stanwell Food Bank, established in 2018, supports households that need help accessing food as well as offering residents freshly cooked meals, community events and a place to meet and enjoy the park.
- Manor Mead Primary School in Shepperton provides a rich

and varied curriculum to meet the needs of individual pupils with an emphasis on supporting independence and ensuring learning is fun.

- Newlife, founded over 30 years ago, provides disabled and terminally ill children with life changing equipment and support for families.

Cllr Buck moved from London to Spelthorne in 2015 and was elected as councillor for Ashford North and Stanwell South in 2023. He has a wealth of experience and a proven track record of leadership. Having served in senior management and leadership roles in the NHS and other organisations for nearly twenty years, he has a strong commitment to the community and has a clear vision for the future. Cllr Buck believes in the power of community collaboration and is committed to working with everyone to address the challenges we face and lead Spelthorne towards a brighter and more prosperous future. His wife, Madhuri Buck, will



be his consort over the course of the mayoral year.

Cllr Med Buck said: "I am overjoyed to be chosen to represent this great Borough as the Mayor of Spelthorne and I would like to thank my fellow councillors for this opportunity. I am absolutely committed to representing this community and supporting residents during the coming year. The charities I have chosen are very important as they all provide a range of services and support, particularly for residents who are vulnerable."

Cllr John Doran was also elected as Deputy Mayor.

For information about the Mayor's events, visit www.spelthorne.gov.uk/mayor, email mayor@spelthorne.gov.uk or call **01784 446275**

Celebrating Spelthorne's 50th anniversary

Spelthorne Borough Council marked 50 years since its creation in April. This milestone is shared with many of the borough councils established after the Local Government Act of 1972. Spelthorne Borough Council was created by combining two former districts - Staines Urban District and Sunbury-on-Thames Urban District.

These two urban districts were part of Middlesex before 1965, when they were transferred to Surrey on the creation of Greater London. The district was awarded borough status from its creation, allowing the chair of the council to take the title of mayor.

Since its establishment, the Borough of Spelthorne has had 16 political leaders and 54 mayors.

The half century was marked with several events. The Civic Awards Trust presented the Council with a plaque at their awards ceremony on 17 April and a church service was held at St. Matthews Church in Ashford on 9 June. Parties are also being held at the community centres in the summer and commemorative trees are being planted in the autumn.



years serving our local communities



Spelthorne Partnership Assembly

Building on the strong links made through the Residents' Association meetings, Spelthorne Council is pleased to announce the launch of the Spelthorne Partnership Assembly.

The assembly, led by Leader of the Council, Cllr Joanne Sexton and Deputy Leader, Cllr Chris Bateson, will meet four times a year and is open to all residents and partner organisations, including Surrey County Council, Surrey Police and the NHS.

If you are interested in attending the next meeting in the autumn, please register by emailing community.development@spelthorne.gov.uk or calling **01784 446433**

Planning Enforcement at Spelthorne

Each year the Planning Enforcement team at Spelthorne Council investigates around 350 possible breaches of planning control. They look into cases where something has been built without planning permission or where the conditions set out in the planning permission have not been met.

Examples include construction of buildings or structures such as a wall or fence, change of use of buildings or land, works to protected trees and hedgerows, unauthorised advertising displays, work to listed buildings and demolition of certain buildings in Conservation Areas.

Planning enforcement plays a vital part in the planning process. By identifying and tackling cases of unauthorised development, the enforcement process ensures fairness, stops unacceptable development and gives residents confidence in the system.

A breach of planning control is not a criminal offence and local councils can use their discretion on what action to take. The purpose of planning enforcement is to remedy the problem rather than to punish the mistake. In most cases the Council will attempt to resolve the breach by negotiation and may offer the opportunity to apply for retrospective planning permission. Where serious harm is being caused however, the Council will take firm action and may not enter into any negotiations before doing so.

To manage resources effectively, cases are prioritised according to the level of harm identified from the initial complaint. Dependent on the outcome of that initial response, the priority rating may be changed. The team does not deal with civil issues such as neighbour disputes, land boundary or ownership disputes, deeds of covenant issues or works to party walls.

These are examples of recent cases.

In this first case in Stanwell (seen bottom left), we received a complaint about the unauthorised development of two partially rendered metal storage containers. This was visually very obtrusive and detrimental to neighbours and surrounding area.

This second case in Staines (seen below) involved the unlawful development of a lean-to structure, metal container with flue for spray painting, outbuilding/shed for storage, fencing and gates, and metal container for office use.



In other recent cases, the Planning Enforcement team obtained a High Court Injunction Order in March prohibiting a landowner from keeping mobile homes and other vehicles on land at Chertsey Road in Shepperton. In April, the team also successfully prosecuted an individual who breached a Tree Preservation Order at a property on The Avenue in Sunbury.

New enforcement legislation was introduced in April which tightens enforcement powers. The main change relates to an increase in the time given to councils to take action for certain types of breaches, which is good news for helping protect the community against unauthorised development.

For more information and advice, visit www.spelthorne.gov.uk/enforcement, email customer.services@spelthorne.gov.uk or call **01784 451499**.

You can report a planning enforcement issue online at www.spelthorne.gov.uk/report



Spelthorne honours volunteers

Spelthorne Council paid tribute to 16 volunteers at the Civic Trust Awards, which honours residents for their voluntary service in the Borough, in a ceremony on Wednesday 17 April.

Spelthorne Civic Awards Trust recognises individuals who have given at least 12 years' service to volunteering in the Borough, and letters of commendation are awarded to those who have done a further 10 years. During the evening, the Civic Trust presented the Council with a special plaque to recognise its 50th anniversary.

Civic Awards

- David Brown, 6th Staines Scout Group
- John Graham, Sunbury Skiff & Punting Club
- Amanda Griffiths, 1st Sunbury Rainbows & Brownies
- Alison Hogan, 1st Shepperton Guides
- Sharon Holmes, Shepperton District Scouts

- Stewart Holmes, 6th Staines Scouts
- Pauline Newman, Daybreak Respite Care Centre
- Siobhan O'Sullivan, Sunbury Junior Regatta
- Sylvia Peacock, 6th Sunbury Brownies
- Kathy Purdon, Staines District Brownies/ Manna Foodbank
- Ken Saunders, Staines Strollers/ Spelthorne Boccia and others
- Patricia Whisker, Daybreak Respite Care Centre
- David Furst (posthumous), Laleham Residents' Association

Letter of Commendation

- Anne Damerell, Home Start/ SCAN/SMHA
- Judy Parsons, 1st Sunbury Guides, Rangers & Brownies
- Ann Scott, 1st Sunbury Guides, Rangers & Brownie

Spelthorne Volunteer Drivers

Spelthorne Volunteer Drivers, a charity which helps elderly and/or disabled residents in the Borough get to medical appointments, is seeking additional volunteers to provide support to local residents.

We are looking for drivers who can spare an hour or two each week. It is an interesting, varied and rewarding role and the amount of time you give is entirely up to you. You will of course be paid expenses.

We also need duty control officers, based at home, to take calls from clients between 10am and 12noon on weekdays. The role is carried out on a rota basis and would suit a person who is housebound.



If you would like to know more, please email spelthornevolunteerdriers@gmail.com or call **07817 926736** between 10am and 12noon, Monday to Friday. Visit the website at <https://spelthornevolunteerdriers.org.uk>

Daybreak respite care

At Daybreak we offer respite care and support to people in the community with chronic illnesses, physical disabilities, dementia or social isolation.

We give carers a well-earned break for five hours on a Tuesday, while their family member receives respite care of the highest standard. We provide a happy and vibrant environment where people can enjoy some company, a home cooked meal and regular musical entertainment. Our provision of care includes blood pressure and sugar monitoring, continence care, dietary needs, personal care and supervision of prescribed medication. Each guest has an individual care plan.

We are based at St. Peter's Church Hall on the Laleham Road in Staines and are open from 10am – 3pm every Tuesday (excluding Christmas and Easter). The cost is £30 per day which includes a two-course lunch and all refreshments.

For more information, email Sally Kidd at sallykdaybreak@gmail.com or call **077610 47930** (Monday Friday)

Staines Parochial Charity

Staines Parochial Charity will be allocating their annual financial grants in the autumn to local residents who are facing financial difficulties due to problems such as poor health, disability, low income or homelessness. Relevant charities can also apply.

To be eligible for a grant, you must have lived in the Staines area for at least two years (or in the case of charities, been active in Staines for at least two years).

The deadline for completed applications is Monday 14 October.



To request an application form, email the Secretary, June Stillwell, at june.stillwell@btinternet.com or call **01784 463013**

WATERSHED
CHARTERED ARCHITECT



020 3908 5636
raymond.wong@watershedarch.co.uk
www.watershedarch.co.uk
Causeway House · 13 The Causeway ·
Teddington · TW11 0JR

arb Architects
Registration
Board
RIBA
Chartered Practice

Open mornings
9.30am - 10.30am



Aspire, Contribute, Explore

We are welcoming all new families to find out more about Springfield through attending our open mornings

September 2024

Tuesday 12 Sept
Friday 20 Sept
Wednesday 25 Sept
(Meet the SENCo)

October 2024

Tuesday 1 Oct
Friday 11 Oct
Friday 18 Oct
(Meet the SENCo)

November 2024

Wednesday 6 Nov
Thursday 14 Nov
Wednesday 20 Nov
(Meet the SENCo)
Tuesday 26 Nov

December 2024

Tuesday 3 Dec

January 2025

Tuesday 7 Jan
(Meet the SENCo)
Monday 13 Jan



Please email your attendance to:
info@springfield.surrey.sch.uk



01932 782 815



www.springfieldsch.org

FACIAL & BODY SCULPTING by Monika

SUMMER READY!
SALE

FBS is a private, doctor-led medical clinic specialising in soft and non-surgical facial and body treatments. **Monika - Clinical Director**



FREE
BODY TREATMENT
OR FACIAL*

*Free when you buy a package. Call for details on all our packages.

SAVE 30%
ON SKIN TAG
REMOVAL*

*Save 30% on a maximum removal of 10 skin tags.

NON-SURGICAL
& SOFT FACIAL
TREATMENTS
BODY TREATMENTS

✉ monika@facialbodysculpting.co.uk

☎ 07990 088137

📱 @facialbodysculptingbymonika

20 AVON ROAD · SUNBURY · ON · THAMES · TW16 7TB

66A HIGH STREET · EGHAM · TW20 9EY

www.facialbodysculpting.co.uk

Eclipse Leisure Centre opening soon

Work to build the new Eclipse Leisure Centre is now in the final stages and we are looking forward to opening the doors this autumn.

A special event was held on the site of the new centre on Tuesday 30 April, with children from Riverbridge Primary school joining the Mayor of Spelthorne to bury a time capsule.

The students worked on a project to compile diary entries and their reflections of Spelthorne in 2024 to produce a unique booklet which was placed in the time capsule, together with information about the rare medieval coins found on the site during the excavation and archive photos of the current leisure centre.

Over coming months, we will be arranging open days for residents to come and have a look around the new centre and will be announcing a programme of events to celebrate the opening on our website and social media.



For more details about Eclipse Leisure Centre, visit www.spelthorne.gov.uk/eclipseleisurecentre

Boost for Sunbury Leisure Centre

Spelthorne Council has been awarded just under £995,000 by the Government and Sport England to add solar panels and replace old gas boilers with heat pumps at Sunbury Leisure Centre. Gas usage at the centre will be reduced to zero as a result, a big step towards meeting the Council's carbon reduction targets. The award for Spelthorne Council represented the highest grant given to any authority in the South East.

Full details regarding the timings will be confirmed soon. The Council does not anticipate needing to close the leisure centre during the work.



Parks tennis

LTA Free Park Tennis is a new programme that gives more people the chance to play tennis by offering fun, social tennis sessions in the community. Sessions are free for all ages and abilities, running for one hour every Sunday at 9.30am (Stanwell Village) and 11am (Cedars Park in Sunbury) by a team of trained volunteers. This could be you!

Park Tennis Activators work together as a team, running games and exercises that will help more people get active and discover their love for tennis. Training, equipment (including your own hoody) are all provided.

If you are interested in becoming a Tennis Activator, contact Steve.

To find out more, email Steve at tennisspelthorne@gmail.com

Parent and child sessions

Tennis Spelthorne is also offering parent and child sessions in Stanwell Village and Cedars Park in Sunbury. Sessions are £7 (free for home schooled with ECHP, 50% discount for families receiving income support). Parents will get to be involved, so get a group of friends together for some fun and fitness and an opportunity to play each other at the end of the session whilst the coach focuses on the children.

Cedars Park (Mondays)

4.10pm - 4.55pm	age 5-8
4.55pm - 5.40pm	ages 9 and 10

Stanwell Village Park (Wednesdays)

4.30pm - 5.15pm	age 5-8
5.15pm - 6pm	ages 9 and 10

To book or for more information, visit tennisspelthorne.com/community_project

Pickleball

Fast becoming one of the most popular racket sports in the world, pickleball brings together some of the best elements of tennis, badminton and table tennis, into a fun and exciting game for people of all ages and abilities. Visit <https://tennisspelthorne.com/pickleball> to book a free social session or enquire about coaching.



**Saturday 6 July,
10am-12
noon
Plant Swap**

Come along and swap a plant that you no longer want, or buy one from our stall.



Venue: Church Road, Ashford (by the fish and chip shop)

Cost: Free

For more information, email
barbara.baghapour@live.co.uk



Saturday 6 July, 11.30am-4.30pm

Laleham Village Fair

Summer fair for the local community with music, food, activities and family fun.

Venue: Laleham Recreation Ground, The Broadway, Laleham, TW18 1RZ

Cost: Free

For more information, visit <https://lalehamresidentsassociation.org.uk>

Saturday 13 July, 2.30pm-4.30pm

Ashford Horticultural Society - Summer Show

Every year Ashford Horticultural Society holds a show of flowers and produce that members have grown and are proud to show. Tea, coffee and homemade cake will be available.

Venue: St. Matthew's Church Hall, Muncaster Close, Ashford TW15 2EE

Cost: Free

For more information, email
barbara.baghapour@live.co.uk



**Saturday 20 July, 10am-2pm
Spelthorne Resource Centre:
Summer Art Open Day**

Come along and make some summer crafts this holiday! Children must be accompanied by an adult. Spaces are first-come first-served. For children aged 4-11 years. No need to book.

Venue: Spelthorne Resource Centre, Staines Park, Commercial Road, Staines TW18 2QJ

Cost: £1 per child (50p for siblings)

email d.harding@spelthorne.gov.uk or call 01784 461769



**Saturday 20 July, 10am-4pm
Summer of Sport - Crazy Golf**

Join us inside the Elmsleigh Centre for a 9-hole crazy golf course as part the Visit Staines Big Summer of Sport.

Venue: The Elmsleigh Centre, Staines-upon-Thames

Cost: Free

For more information, visit
www.visitstaines.co.uk

**Tuesday 23 July, 10am-4pm
Little Green Boat Company -
Summer Bear Hunt**

To mark the start of the school holidays, why not join us for a delightful Bear Hunt at Lammas Recreation Ground. For children aged 12 years and younger.

Venue: The Little Green Boat Company, Lammas Park, Staines-upon-Thames TW18 4XZ

Cost: Free

Visit www.thelittlegreenboatcompany.co.uk/staines/summer-bear-hunt or call 07765 701011



**Saturday 27 July, 12 noon
Family Fun Day**

A day for people to visit Ashford Youth Club and have some fun. Includes a barbecue, bouncy castle, music, crafts and more.

Venue: Ashford Youth Club, Kenilworth Road, Ashford, TW15 3EL

Cost: Free

email ashforyouthclub@gmail.com



**Tuesday 30 July, 11am-2pm
Home-Start Spelthorne -
Picnic in the Park**

Our annual picnic in Staines Park. We will have games, a toy sale, crafts, bake sale and train rides. Suitable for all the family. All proceeds will go to Home-Start Spelthorne.

Venue: Staines Park, Commercial Road, Staines-upon-Thames, TW18 2QW

Cost: £2 per adult, £1 per child

email info@home-startspelthorne.org or call 01784 463200

**Saturday 31 August,
1pm-3pm
Shepperton Horticultural
Association - Autumn Show**

Display of members' produce including vegetables, flowers, baking, handicraft and photographs. New members welcome, see our website for details.

Venue: Shepperton Village Hall, High Street, Shepperton, TW17 9AU

Cost: Free



visit www.sheppertonha.co.uk



Free outdoor theatre events in Staines



Thursday 1 August, 1pm The Guy in the Luggage Rack

An aerial theatre show about grief, memory and relationships, combining physical comedy with striking aerial acrobatics.

Venue: Memorial Gardens, Staines-upon-Thames, TW18 4SD

Please pre book at www.visitstaines.co.uk as there is limited capacity

Thursday 8 August, 11am and 2pm Tape That

A charming, light-hearted, non-verbal acrobatic duet. Two performers construct a visual world using colourful tape, object manipulation and partner acrobatics.

Venue: Two Rivers (outside Costa)



© 2023 Adrienne Photography

Thursday 15 August, 12noon-3pm (various intervals)

The Jukeboxes

Two beautiful 1950s Jukeboxes sit side-by-side. Watch them spring to life as two performers (hidden inside) recreate classic pop music videos in a lip-syncing musical medley. The Beatles, Sinead O'Connor, Miley Cyrus, Stevie Wonder and Adele all make cameos, and the audience is encouraged to sing along.

Venue: High Street, Staines-upon-Thames



Thursday 22 August, 12noon and 2.30pm

Knot

Knot sees two male dancers using extreme physicality, complex lifts and contact choreography, to explore the many facets of human relationships through physical expression.

Venue: The Elmsleigh Centre, Staines-upon-Thames

Thursday 29 August, 1pm Jemima Puddle Duck

A delightful new adaptation of Beatrix Potter's much-loved tale. Prevented from hatching her eggs at the farm, foolish Jemima goes in search of a nesting place in the forest and soon she meets a charming 'gentleman' who offers her the perfect nesting place in his woodshed.

Venue: Memorial Gardens, Staines-upon-Thames

Please pre book at www.visitstaines.co.uk as there is limited capacity

Music in the Park

Join us for a free afternoon of music in the beautiful surroundings of either The Walled Garden, Thames Street, Sunbury-on-Thames, TW16 6AB or The Lammas Band Stand, Lammas Recreation Ground, Wraysbury Road, Staines-upon-Thames, TW18 4XZ. All performances start at 2pm and finish at 4pm. Please bring your own chairs or picnic blankets. Refreshments are available to purchase at both venues.



Jake Fryer & All That Jazz

Date	Venue	Performer
Sunday 7 July	The Walled Garden	British Airways Band
Sunday 14 July	The Walled Garden	Saxophany
Sunday 14 July	The Lammas Bandstand	Staines Lammas Band
Sunday 28 July	The Walled Garden	Bourne Concert Band
Sunday 4 August	The Walled Garden	Thames Harmony Chorus
Sunday 11 August	The Walled Garden	Dale Harris Classical Guitarist
Sunday 18 August	The Walled Garden	All that Jazz
Sunday 18 August	The Lammas Bandstand	Staines Brass Band
Sunday 25 August	The Walled Garden	The Linden Wind Orchestra
Sunday 1 September	The Walled Garden	Staines Lammas Band

Visit www.spelthorne.gov.uk/music, email leisure@spelthorne.gov.uk or call 01784 446433



STAINES PREPARATORY SCHOOL
Educating today's children for the challenges of tomorrow

To find out more about life at
Staines Prep, join us for our

OPEN MORNING

taking place on

FRIDAY 4TH OCTOBER 2024

9.30-11.30AM

or book a personal tour by
contacting our admissions team



BOOK HERE

An independent day school and nursery for children aged 3-11 years
01784 450909 | www.stainesprep.co.uk | admissions@stainesprep.co.uk



*Driveway
Specialists*



Laleham Landscapes
The Complete Garden Service

- Artificial Lawn,
- Construction
- Design
- Decking & Patios
- Driveways
- Fencing
- Maintenance
- Paving & Brickwork
- Resin Bonding
- Tree Surgery
- Turfing - Ground Works & Lawn Care

Revive UR Drive

The Driveway Refurbishment Experts
Driveways, Patios and Paths Expertly Installed
or Professionally Restored, Cleaned and Sealed

01784 255 094

07961 523 235



sales@lalehamlandscapes.co.uk
www.lalehamlandscapes.co.uk



Residents survey

If you live in Spelthorne, then you can really help us to understand your views on the services that Spelthorne Borough Council provide you and your family.

We are committed to listening to residents and acting in your best interests and this survey will provide feedback on what is important to our communities and help in future planning of services.

Your responses will help us understand what you think of the Council and the services we provide.

The survey covers a number of areas:

- area and service satisfaction
- value for money
- responsiveness
- keeping informed
- endorsing
- community
- safety and trust
- anti-social behaviour
- demographics

Spelthorne residents receive services from two councils, Spelthorne Borough Council and Surrey County Council. This survey relates to the services that are provided by Spelthorne Borough Council which include:

Affordable housing	Allotments	Biodiversity and conservation	Building control	Business grants and support
Car parks	Communications	Community Centres	Community grants	Community safety
Community transport	Council Tax and business rates	Customer services	Elections	Electric vehicle charging points
Environmental health	Food and welfare network	Homelessness provision	Independent living	
Economic Development	Leisure Centres and services	Licensing	Meals on wheels	Moorings
Memorials and Cemeteries	Planning	Playgrounds and parks	Public toilets	Street cleaning
Recycling and waste collection	Staines market	Tackling fly tipping	Town Centre management	



Surrey County Council is responsible for services such as highways (pavement, footpaths, road maintenance and potholes) schools and education, social care services, verge cutting, libraries, on-street parking, fire and rescue and street lighting.

How to respond

Let us know your views by filling in this survey and you could win a £100 gift card*.

Closing date: midnight on 1 September 2024.

By post:

Drop your completed survey at the Council Offices or post it to:

Communications
Spelthorne Borough Council,
Knowle Green
Staines-upon-Thames
TW18 1XB

Online:

Scan this QR code or fill in online at www.spelthorne.inconsult.uk



Paper copies of the survey are available at the Council Offices, libraries, community centres and Spelthorne and Sunbury Leisure Centres.

Alternatively, if you require a hard copy or a version in large print or in another format, please contact the Communications team by calling 01784 454499 or emailing news@spelthorne.gov.uk

Survey results will be published in autumn 2024

*For privacy notice and prize draw terms and conditions, visit www.spelthorne.gov.uk/residentsurvey.



Questions:

1. In which part of Spelthorne do you live?

- Ashford Charlton Village Halliford Laleham Shepperton
 Staines-upon-Thames Stanwell Stanwell Moor Sunbury

Area satisfaction

2. Overall, how satisfied or dissatisfied are you with your local area as a place to live?

Very satisfied	Fairly satisfied	Neither satisfied nor dissatisfied	Fairly dissatisfied	Very dissatisfied	Don't know
<input type="radio"/>	<input type="radio"/>	<input type="radio"/>	<input type="radio"/>	<input type="radio"/>	<input type="radio"/>

Satisfaction with Spelthorne Borough Council

3. Overall, how satisfied or dissatisfied are you with the way Spelthorne Borough Council runs the services they provide?

Very satisfied	Fairly satisfied	Neither satisfied nor dissatisfied	Fairly dissatisfied	Very dissatisfied	Don't know
<input type="radio"/>	<input type="radio"/>	<input type="radio"/>	<input type="radio"/>	<input type="radio"/>	<input type="radio"/>

Services

4. Below is a list of core services that are provided by Spelthorne Borough Council. Please rate how satisfied or dissatisfied you are overall with the council's...

	Very satisfied	Fairly satisfied	Neither satisfied nor dissatisfied	Fairly dissatisfied	Very dissatisfied	Don't know
Allotments	<input type="radio"/>	<input type="radio"/>	<input type="radio"/>	<input type="radio"/>	<input type="radio"/>	<input type="radio"/>
Building control (e.g. checking building works meet regulations)	<input type="radio"/>	<input type="radio"/>	<input type="radio"/>	<input type="radio"/>	<input type="radio"/>	<input type="radio"/>
Business support	<input type="radio"/>	<input type="radio"/>	<input type="radio"/>	<input type="radio"/>	<input type="radio"/>	<input type="radio"/>
Car parks	<input type="radio"/>	<input type="radio"/>	<input type="radio"/>	<input type="radio"/>	<input type="radio"/>	<input type="radio"/>
Cemeteries	<input type="radio"/>	<input type="radio"/>	<input type="radio"/>	<input type="radio"/>	<input type="radio"/>	<input type="radio"/>
Personal alarms	<input type="radio"/>	<input type="radio"/>	<input type="radio"/>	<input type="radio"/>	<input type="radio"/>	<input type="radio"/>
Community centres	<input type="radio"/>	<input type="radio"/>	<input type="radio"/>	<input type="radio"/>	<input type="radio"/>	<input type="radio"/>
Community transport	<input type="radio"/>	<input type="radio"/>	<input type="radio"/>	<input type="radio"/>	<input type="radio"/>	<input type="radio"/>
Community safety	<input type="radio"/>	<input type="radio"/>	<input type="radio"/>	<input type="radio"/>	<input type="radio"/>	<input type="radio"/>
Customer services	<input type="radio"/>	<input type="radio"/>	<input type="radio"/>	<input type="radio"/>	<input type="radio"/>	<input type="radio"/>
Elections	<input type="radio"/>	<input type="radio"/>	<input type="radio"/>	<input type="radio"/>	<input type="radio"/>	<input type="radio"/>
Environmental health	<input type="radio"/>	<input type="radio"/>	<input type="radio"/>	<input type="radio"/>	<input type="radio"/>	<input type="radio"/>
Family support	<input type="radio"/>	<input type="radio"/>	<input type="radio"/>	<input type="radio"/>	<input type="radio"/>	<input type="radio"/>
Grants to community groups	<input type="radio"/>	<input type="radio"/>	<input type="radio"/>	<input type="radio"/>	<input type="radio"/>	<input type="radio"/>
Housing and Homelessness provision	<input type="radio"/>	<input type="radio"/>	<input type="radio"/>	<input type="radio"/>	<input type="radio"/>	<input type="radio"/>
Lamp column floral displays	<input type="radio"/>	<input type="radio"/>	<input type="radio"/>	<input type="radio"/>	<input type="radio"/>	<input type="radio"/>
Licensing	<input type="radio"/>	<input type="radio"/>	<input type="radio"/>	<input type="radio"/>	<input type="radio"/>	<input type="radio"/>
Meals on wheels	<input type="radio"/>	<input type="radio"/>	<input type="radio"/>	<input type="radio"/>	<input type="radio"/>	<input type="radio"/>
Parks and open spaces	<input type="radio"/>	<input type="radio"/>	<input type="radio"/>	<input type="radio"/>	<input type="radio"/>	<input type="radio"/>
Strategic planning (e.g. Local Plan)	<input type="radio"/>	<input type="radio"/>	<input type="radio"/>	<input type="radio"/>	<input type="radio"/>	<input type="radio"/>
Planning applications and enforcement	<input type="radio"/>	<input type="radio"/>	<input type="radio"/>	<input type="radio"/>	<input type="radio"/>	<input type="radio"/>

	Very satisfied	Fairly satisfied	Neither satisfied nor dissatisfied	Fairly dissatisfied	Very dissatisfied	Don't know
Spelthorne Leisure Centre	<input type="radio"/>	<input type="radio"/>	<input type="radio"/>	<input type="radio"/>	<input type="radio"/>	<input type="radio"/>
Sunbury Leisure Centre	<input type="radio"/>	<input type="radio"/>	<input type="radio"/>	<input type="radio"/>	<input type="radio"/>	<input type="radio"/>
Street cleaning	<input type="radio"/>	<input type="radio"/>	<input type="radio"/>	<input type="radio"/>	<input type="radio"/>	<input type="radio"/>
Waste and recycling services	<input type="radio"/>	<input type="radio"/>	<input type="radio"/>	<input type="radio"/>	<input type="radio"/>	<input type="radio"/>

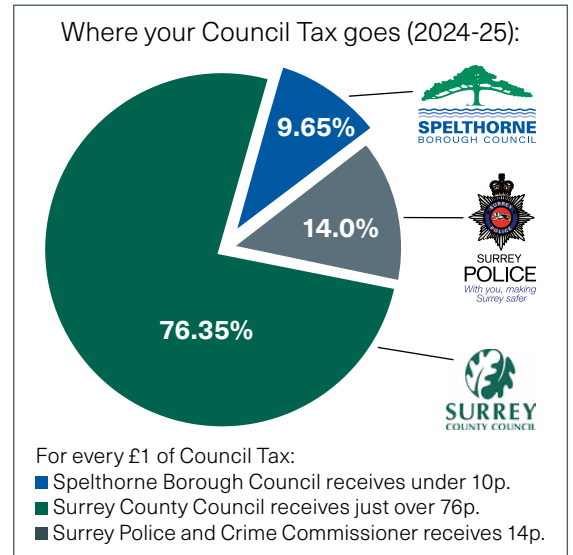
Value for money

Under 10% (9.65p in every pound) of the Council Tax we collect is actually used to fund Spelthorne Borough Council services, with the balance distributed to Surrey County Council and Surrey Police.

In considering the next question, please think about the range of services Spelthorne Borough Council provides to the community as a whole, as well as the services your household uses.

5. To what extent do you agree or disagree that Spelthorne Borough Council provides value for money?

Strongly agree	Tend to agree	Neither agree nor disagree	Tend to disagree	Strongly disagree	Don't know
<input type="radio"/>	<input type="radio"/>	<input type="radio"/>	<input type="radio"/>	<input type="radio"/>	<input type="radio"/>



Responsiveness

6. To what extent do you think Spelthorne Borough Council acts on the concerns of local residents and listens to their views?

A great deal	A fair amount	Not very much	Not at all	Don't know
<input type="radio"/>	<input type="radio"/>	<input type="radio"/>	<input type="radio"/>	<input type="radio"/>

Keeping informed

7. Overall, how well informed do you think Spelthorne Borough Council keeps residents about the services and benefits it provides?

Very well informed	Fairly well informed	Not very well informed	Not well informed at all	Don't know
<input type="radio"/>	<input type="radio"/>	<input type="radio"/>	<input type="radio"/>	<input type="radio"/>

Endorsement

8. On balance, which of the following statements comes closest to how you feel about Spelthorne Borough Council?

- | | |
|---|--|
| <input type="checkbox"/> I speak positively of the council without being asked | <input type="checkbox"/> I speak negatively about the council if I am asked about it |
| <input type="checkbox"/> I speak positively of the council if I am asked about it | <input type="checkbox"/> I speak negatively about the council without being asked |
| <input type="checkbox"/> I have no views one way or another | <input type="checkbox"/> Don't know |

Community

9. How strongly do you feel you belong to your local area?

Very strongly	Fairly strongly	Not very strongly	Not at all strongly	Don't know
<input type="radio"/>	<input type="radio"/>	<input type="radio"/>	<input type="radio"/>	<input type="radio"/>

10. To what extent would you agree or disagree that people in your local area pull together to improve the local area?

Definitely agree	Tend to agree	Neither agree nor disagree	Tend to disagree	Definitely disagree	Don't know
<input type="radio"/>	<input type="radio"/>	<input type="radio"/>	<input type="radio"/>	<input type="radio"/>	<input type="radio"/>

Residents survey

Safety after dark

11. How safe or unsafe do you feel when outside in your local area after dark?

- | | | | | | |
|-----------------------|-----------------------|-------------------------|-----------------------|-----------------------|-----------------------|
| Very safe | Fairly safe | Neither safe nor unsafe | Fairly unsafe | Very unsafe | Don't know |
| <input type="radio"/> | <input type="radio"/> | <input type="radio"/> | <input type="radio"/> | <input type="radio"/> | <input type="radio"/> |

Safety during the day

12. How safe or unsafe do you feel when outside in your local area during the day?

- | | | | | | |
|-----------------------|-----------------------|-------------------------|-----------------------|-----------------------|-----------------------|
| Very safe | Fairly safe | Neither safe nor unsafe | Fairly unsafe | Very unsafe | Don't know |
| <input type="radio"/> | <input type="radio"/> | <input type="radio"/> | <input type="radio"/> | <input type="radio"/> | <input type="radio"/> |

Trust

13. How much do you trust Spelthorne Borough Council?

- | | | | | |
|-----------------------|-----------------------|-----------------------|-----------------------|-----------------------|
| A great deal | A fair amount | Not very much | Not at all | Don't know |
| <input type="radio"/> | <input type="radio"/> | <input type="radio"/> | <input type="radio"/> | <input type="radio"/> |

Anti-social behaviour

14. Thinking about your local area, how much of a problem do you think each of the following are....

	A very big problem	A fairly big problem	Not a very big problem	Not a problem at all	Don't know/No opinion
Groups hanging around the streets	<input type="radio"/>	<input type="radio"/>	<input type="radio"/>	<input type="radio"/>	<input type="radio"/>
Noisy neighbours or loud parties	<input type="radio"/>	<input type="radio"/>	<input type="radio"/>	<input type="radio"/>	<input type="radio"/>
People being drunk or rowdy in public places	<input type="radio"/>	<input type="radio"/>	<input type="radio"/>	<input type="radio"/>	<input type="radio"/>
People using or dealing drugs	<input type="radio"/>	<input type="radio"/>	<input type="radio"/>	<input type="radio"/>	<input type="radio"/>
Rubbish, fly tipping or litter lying around	<input type="radio"/>	<input type="radio"/>	<input type="radio"/>	<input type="radio"/>	<input type="radio"/>
Vandalism, graffiti and other deliberate damage to property or vehicles	<input type="radio"/>	<input type="radio"/>	<input type="radio"/>	<input type="radio"/>	<input type="radio"/>

Free text box

15. Please add any additional comments you would like to make (for example, if you could change one thing about Spelthorne Council's services, what would it be?).

Demographics

Please give your age:

- Under 24 25-34 35-44 45-54 55-64 65+ Prefer not to say

Please specify your gender:

- Female Male I describe my gender in another way I prefer not to say

Do you consider yourself to have a disability?

- Yes No Prefer not to say

What is your ethnicity?

- White Mixed or multiple ethnicity Asian or Asian British
 Black, African, Caribbean or Black British Other ethnic group Prefer not to say

LOOKING FOR A NEW JOB?



Scan the QR code for a list of our current vacancies, or call us today to discuss how we can help you find your new job.

Cantello Tayler Recruitment provide permanent, temporary and contract roles for a wide range of industries and sectors. 



www.cantellotayler.com Tel: 01753 428000 enquiries@cantellotayler.com



YOUR LOCAL ELECTRICIAN

DO YOU WANT A QUICK RESPONSE
NO JOB TOO BIG OR TOO SMALL?

WHEN YOU NEED AN ELECTRICAL FAULT/
PROBLEM SOLVED, WE WILL SOLVE IT FOR
YOU. WE'RE WEARING FULL COVID PPE -
BE SAFE IN YOUR HOME AND AT WORK.

CONTACT **RICHARD** FOR A FREE SURVEY,
FREE CONSULTATION, FREE ESTIMATE.

FOR YOUR LOCAL QUALIFIED
ELECTRICIAN, NICEIC APPROVED.

CALL RICHARD
01784849181 OR 07875958912

www.electricianashfordmiddlesex.com or

www.facebook.com/ElectricianTWarea

Clearwell mobility

Making Life Easier



Wheeled Walkers
From **£89.99***

Stairlifts From
£1,790*



Riser Recliners
From **£699***



Visit your local showroom today!

Staines

11-17 Kingston Road,
TW18 4QX

01784 44 00 44

Mon-Sat 9-5PM



*Prices quoted exclude VAT & are available to customers with a long term medical condition.

www.clearwellmobility.co.uk

Mobility Scooters
From **£799***



FREE Brochure

NAME: _____

ADDRESS: _____

POSTCODE: _____

Post to: FREEPOST CLEARWELL MOBILITY



Heat pumps

Have you thought about replacing your current heating system with a low carbon technology heat pump? We have created a page of frequently asked questions to help you understand what they are, if one would be right for you, available grants and handy links.

Visit www.spelthorne.gov.uk/heatpumps

Green Connections

Talking Tree recently held their first Green Forum event, inviting groups from across the Borough with an interest in the environment to network and share experiences and challenges. If your group is interested in attending future events, email talkingtreecec@gmail.com



Solar Together

Solar Together aims to boost solar power from UK homes by making it easier for residents to find a trustworthy installer. It is a group buying scheme that enables you to install high-quality, roof mounted solar panels at a competitive price.

You can also choose to fit a domestic battery system to store surplus electricity generated by the solar panels and use it when needed. Having your own solar panels can produce clean energy, whilst helping to reduce your household energy use and bills.

Phase 3 of the scheme opened for registration on 17 June and installations are expected to take place between October 2024 and March 2025.

For more information, visit www.solartogether.co.uk/surrey

Lower Sunbury Hedgehog Project

The Lower Sunbury Hedgehog Project campaign was started in May by the Lower Sunbury Residents Association in partnership with Friends of Sunbury Park, the Spelthorne Natural History Society and Spelthorne Borough Council. The project's aim is to stop the decline in hedgehog numbers by improving monitoring and encouraging residents to make their gardens a safe space for spiny friends.

Hedgehogs are one of the nation's favourite native animals, yet a third of the hedgehog population has been lost since the millennium and they are now on the IUCN Red List as being vulnerable to extinction.

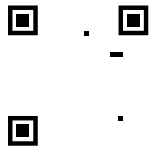
Hedgehogs thrive in domestic gardens where they find the ideal variety of food and cover. They travel a kilometre or two every night as they forage and search for mates, meaning they need to be able to move between gardens. Making a small hole (5 x 5 inches) at ground level in garden



fences and walls creates a 'hedgehog highway', linking gardens to parks and other open spaces.

To get involved, use the QR code, visit The Lower Sunbury Hedgehog Project Facebook page or Spelthorne Council's webpage at www.spelthorne.gov.uk/hedgehog for all the resources you need to get started. You can also visit the Big Hedgehog Map at www.bighedgehogmap.org to register your hedgehog sightings.

It is hoped the project will foster a real community spirit in helping these delightful animals. Get in touch if you would like to set up a similar project in your area.

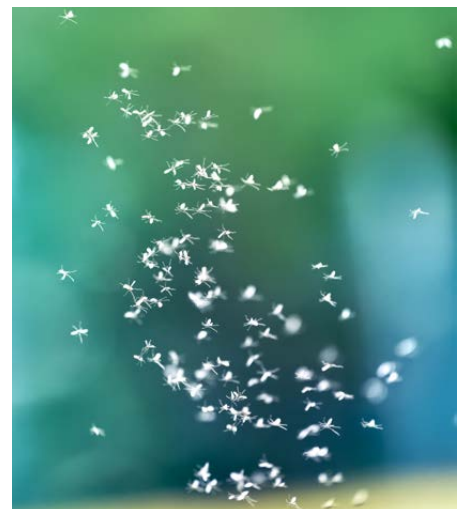


Chironomids

During the warmer months, some residents in the Borough report problems with Chironomids, mosquito-like insects that live near areas of water, such as lakes and reservoirs. Their adult stage lasts only a week, during which they swarm as part of the mating process. Although an annoyance, they are not hazardous to health as they don't bite or spread disease.

As Chironomids and their larvae are an important part of the food chain for other insects and birds, and it's illegal to use insecticide where there's a risk it could drift into other properties, Thames Water are no longer able to spray the reservoirs with insecticides. To help alleviate the issue, Thames

Water use environmentally friendly methods such as spraying water to discourage the insects, and placing brightly coloured markers to attract them away from residential areas.



If you are affected by this issue, contact Thames Water via their website at www.thameswater.co.uk/contact us or call 0800 316 9800. For more information, visit the Council's website at www.spelthorne.gov.uk/chironomids

Spelthorne's Sustainable Gardens

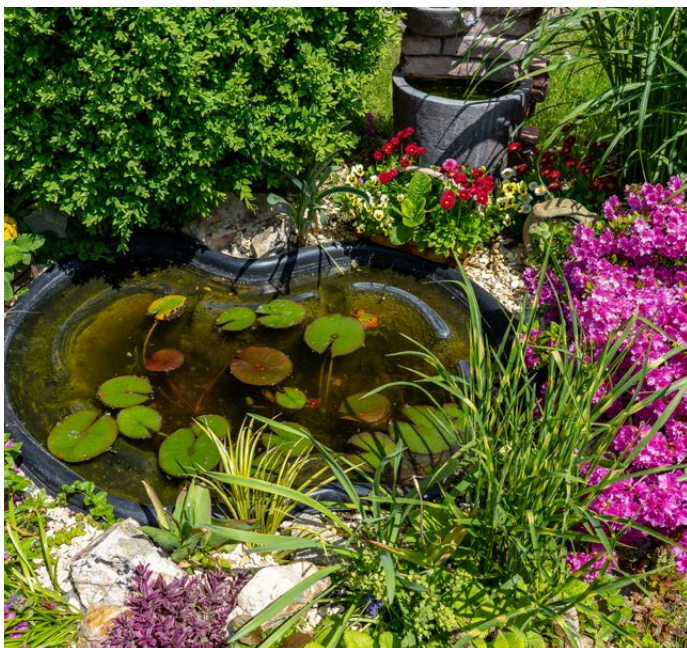
Sustainable gardening is one of the main ways individuals can help the environment. Whether your garden is a windowsill, a balcony or an acre of grass, you can take small actions which will attract an array of wonderful wildlife and provide you with enormous enjoyment.

If you garden, you're already a champion for wildlife! Sustainable gardening means using gardening practices which have social, economic, global and personal impact. It means reducing your impact on the earth and working with nature rather than against it.

Build it and they will come

Encourage wildlife in your space by doing some of the following:

- Bug hotels – easy to make at home with bricks and logs, you can provide a shelter for insects to live and lay eggs
- Log piles – decaying wood is essential for certain life stages of beetles and other invertebrates
- Hedgehog tunnels – add a 5x5 inch hole at the bottom of your fence to allow hedgehogs to travel, helping their foraging and mating chances
- Nesting boxes – for birds and bats, to attract day visitors to stick around
- Create a water wonderland - build a pond or even a bucket can offer a haven to wildlife. Add some oxygenating pond plants and ramps to help wildlife in and out of your pond
- Water butts - collecting rainwater is environmentally friendly and cost effective (add a lid to prevent mosquitoes)
- Drinking stations - put out bird baths and bee drinking stations, especially in the hot summer months



Choosing the right plants

Native: This refers to using species that would have naturally occurred in a particular region. Advantages of doing this include preserving local diversity and habitat for the native wildlife which have adapted to exist with these plants. Native plants typically require less water and fewer pesticides, meaning they are lower maintenance.

Variety: Choose a variety of species to provide year-round food and shelter. For example, incorporating evergreen shrubs for cover and plants that produce berries through the winter will support birds all year round.

Climate resilience: Plants that can adapt to our changing climate means that they are more likely to come back year on year, even with changes in the seasons. You may have heard that trees can lock up carbon, but did you know plants also have the ability to remove carbon dioxide from the atmosphere and store it in the plant and soil?

Don't poison me

Step back from using chemicals such as pesticides and fertilisers because they have long-lasting unintended consequences on the ecosystem. For example, using slug killer in your garden can poison and kill hedgehogs which are natural slug predators..

Pests such as slugs and aphids can be a pain, particularly when growing food in your garden, but if you're patient, predators will usually step in and take care of the pests for you.

Try using friendlier deterrent methods such as hanging old CDs to scare birds from crops, or planting garlic near crops to deter slugs.



SAS

Accountants Ltd

Short and Sons Accountants Ltd
Centurion House
Staines Upon Thames
TW18 4AX
Direct Line: 07481 479933
Email: Sales@shortandsons.co.uk



SHORT AND SONS ACCOUNTANTS LTD

Fees start at only £299 PER
YEAR INCLUDING VAT!

- Landlords, sole traders, partnerships, and Ltd Companies are all welcome!
- FreeAgent, Xero, Quickbooks and Sage partners
- 1000s of returns have been filed
- 500+ clients trust us for their reporting annually!
- Assistance with VAT, Payroll, CIS reclaims Etc
- 180+ 5 Star Google reviews & Low fixed fees!
- Simple 2-minute joining process

Call now 07481 479933

WWW.SHORTANDSONS.CO.UK

Nursery Places Available

Availability may be limited in certain age groups
or booking patterns

FOR CHILDREN AGED 6 WEEKS TO 5 YEARS



OPEN 7.00AM TO 6.30PM



"Our son absolutely loves going to nursery. He looks forward to going and seeing his friends, loves the toys, equipment, activities and meals. The staff are fantastic, always on hand to help and most importantly are friendly, caring and warm."

Parent, www.daynurseries.co.uk



Fun is an essential ingredient at Knowle Green Day Nursery and Preschool where the care and education opportunities for each and every child are as extraordinary as our colleagues who provide them.

Please call 01784 464141 or email
knowle.green@childbase.com

Knowle Green Day Nursery, Knowle Green, Staines-upon-Thames, Middlesex, TW18 1AJ

We look forward to hearing from you www.childbasepartnership.com



ALDRIDGE & SONS

Roofing Contractors & Consultants

020 8844 0542 aldridgeandsons.co.uk

DOMESTIC & COMMERCIAL ROOFING SPECIALISTS

Aldridge & Sons Roofing Ltd has an unrivalled reputation for quality workmanship and customer service in both domestic roofing and the commercial roofing sector.

Recognising having roofing work completed to your home can be a daunting process our aim is to help our clients understand the process without feeling overwhelmed.

- Domestic roof & chimney repairs • Domestic new work & re-roofing, slate & tiled
3-layer 250 high performance built up felt • Firestone rubberised roofing • Alwitra single ply
Lead roofing • Guttering including new work & repair • UPVC cladding fascia's & soffit
Moss removal • Flat roofing systems • All commercial roofing**

If you are replacing 50% or more of your roof, you are legally obliged to upgrade the insulation and obtain a Building Regulations Compliance Certificate (BRCC) from your local authority building control.

As NFRC CPS contractor we have the unique ability to self-certify any work we complete complies with the relevant Building Regulations in England and Wales saving our clients time and money.

CALL 020 8844 0542 OR 07984 351 607



TRUSTMARK
Government Endorsed Quality





Spelthorne Business Awards

Applications for the 2024 Spelthorne Business Awards are now open.

There is a category for every business - big, small, well established or newly-formed. We look forward to celebrating the achievements of Spelthorne businesses.

To enter, visit www.spelthornebusinessawards.co.uk

Spelthorne Youth Awards

The achievements of 47 special young people, aged 5 - 19, were celebrated at an awards ceremony at Kempton Park Racecourse on Friday 19 April. Organised by Spelthorne Borough Council, the bi-annual Spelthorne Youth Awards recognise the outstanding talents and achievements of local young people and the contributions they make to their communities.

Each nominee received a certificate of

achievement, and nine young people were selected to receive a Star Award, a glass trophy, and a £50 prize.

The ceremony included a new award for Environmental Achievement to acknowledge the work being done by young people to make Spelthorne a greener and more sustainable borough to live, work and study in. Many congratulations to all the nominees and the following Star Award winners:

Achievement	Winner
Academic Achievement	Daisy Graham
Arts Achievement	Ella Stevenson
Community Spirit	Rowen Baker
Personal Achievement	Holly Adams
Sports Achievement	Jake Glew
Unselfishness, Kindness, and Bravery	Lachlan Stewart
Triumph Over Adversity	Grace Lumbi and Sarah Cagdas
Environmental Achievement	Kieran Perren

Community Allotment in Sunbury

Do you enjoy being outside, socialising with others, and seeing the fruits of your labour? If so, we are looking for volunteers to help

with a new community allotment on Groveley Road in Sunbury.



If you are interested in finding out more, please contact Leisure Services on **01784 446433** or email leisure@spelthorne.gov.uk

Annual council grants

Each year, Spelthorne Borough Council gives grants to help local voluntary groups, clubs and organisations.

The application process will open again in autumn for the 2025/26 financial year awards. The dates will be promoted on our website, social media and via Voluntary Support North Surrey. We will be highlighting some of the great work of last year's grant recipients over the coming months - keep an eye on the website and social media.

For more information about annual grants, visit our website at www.spelthorne.gov.uk/annualcouncilgrant

Staines 10K

The Mayor of Spelthorne got runners underway for the start of the 2024 Staines 10K on Sunday 12 May.

The race, organised by Staines Strollers and Runnymede Runners, with support from Spelthorne Borough Council, saw 685 runners completing the course. The men's race was won for the third consecutive year by Blake Moore from Windsor, Slough, Eton and Hounslow Athletics Club, in 31 minutes and 8 seconds. The women's race was won by Rebecca Bunting from London Heathside Runners Athletics Club in 37 minutes and 5 seconds.

Thank you to this year's sponsors and the dozens of volunteers who gave their time to ensure the day ran smoothly.

The full results are available on the Staines 10k website at www.staines10k.co.uk and details of the 2025 race will be available there in the autumn (entries open in February 2025).



Photo: Courtesy of Laleham Camera Club



Community Centres

Our Community Centres in Ashford, Shepperton, Staines and Stanwell provide a wide range of activities including yoga, pilates, quizzes, art, bridge, computer classes, singing, bingo, dancing, book club and language classes. Some also offer hairdressing, chiropody, and beautician services. They are great places to have a bite to eat, meet new people or try some activities.

Saturday opening

The Fordbridge Centre in Ashford and Greeno Centre in Shepperton are continuing to extend their opening times to include alternate Saturdays, until the end of September 2024. Please contact the Centre to book a place for lunch, by the Wednesday before.

Date	Venue
6 July 2024	Greeno Centre, Shepperton
13 July 2024	Fordbridge Centre, Ashford
20 July 2024	Greeno Centre, Shepperton
27 July 2024	Fordbridge Centre, Ashford
3 August 2024	Greeno Centre, Shepperton
10 August 2024	Fordbridge Centre, Ashford
17 August 2024	Greeno Centre, Shepperton
24 August 2024	Fordbridge Centre, Ashford
31 August 2024	Greeno Centre, Shepperton
7 September 2024	Fordbridge Centre, Ashford
14 September 2024	Greeno Centre, Shepperton
21 September 2024	Fordbridge Centre, Ashford
28 September 2024	Greeno Centre, Shepperton

Fordbridge Centre: 01784 243880, email fordbridgecentre@spelthorne.gov.uk
 Greeno Centre: 01932 246173, email greenocentre@spelthorne.gov.uk

For information about opening hours, costs and your nearest centre, visit www.spelthorne.gov.uk/communitycentres, email independentliving@spelthorne.gov.uk or call 01784 446389

Meals on Wheels

If you are struggling to prepare meals for any reason, our Meals on Wheels service can help:

- Delivered to your home on your chosen days
- Hot main course and pudding

- Option to order a sandwich to eat later
- Dietary requirements catered for
- Can be ordered for short or long periods of time



For further information, email m.wheels@spelthorne.gov.uk or call 01784 444265



Support for residents with high needs

If you are caring for someone with a condition such as dementia, sight loss or immobility, you may be interested to know that the Greeno Centre in Shepperton runs a daily OPAL group from 9.30am - 3.30pm for people with support needs.

Our aim is to offer social interaction and stimulating activities, while you get some time to yourself knowing that your loved one is being well looked after. There is a daily charge of £42 to attend the group which can be paid privately or as part of a social care package if eligible.

For more information, email opal@spelthorne.gov.uk or call 01932 246173



Helping people to stay in their homes

Disabled Facilities Grants are available to help fund the cost of aids and adaptations to enable disabled people to live independently in their own home. The type of adaptations which can be funded include:

- widening doors
- level access showers
- stair lifts
- installing ramps
- improving access to rooms

For more information, visit www.spelthorne.gov.uk/DFG, email dfg@spelthorne.gov.uk or call 01784 448607

Discover the freedom of choice with Live-in Care



“Live-in Care means I don't have to sell my home of 50 years, where I hold so many memories with my late husband.”

Joyce
Bluebird Care Live-in Care Customer

Live-in Care means staying in the family home that's loved, with the memories that you all cherish and the surroundings that provide comfort to your loved one.

With tailored care packages ranging from companionship to high-dependency support. Live-in Care with Bluebird Care ensures personalised attention that caters to all needs.

Find the right care today

Bluebird Care Elmbridge, Runnymede & Spelthorne

Call: 01932 567593

bluebirdcare.co.uk/elmbridge-runnymede
elmbridge@bluebirdcare.co.uk



Help at Home

“It is like having a friend come round to help”



Our Help at Home service is so more than just cleaning We are here to make life easier for you

Help at Home is your doorway into a world of advice & information for people aged 50+. At Age UK Surrey we provide various services and activities all geared to making older people get the most out of later life.



01483 503414
enquiries@ageuksurrey.org.uk
www.ageuk.org.uk/surrey



Reg. Charity No: 1036450

1SB0624

xpert

PLUMBING & HEATING

Leaks & Bursts, Boiler breakdowns, servicing & installs. Toilets & taps. Radiators & pumps. Tanks & overflows. Baths & showers.

- ✓ Free estimates
- ✓ Fixed upfront prices
- ✓ Senior citizen discounts
- ✓ Work guaranteed
- ✓ Fully insured
- ✓ No call out charge

Call Stuart on 01784 279262

Covering: Staines, Shepperton, Ashford, Sunbury, Wraysbury, Laleham, Egham & Stanwell.



Update from the Spelthorne Borough Commander

As summer begins, we head into what hopefully will be warmer and drier months and thoughts start to turn to holidays.

We have continued to push our priorities targeting burglary, vehicle theft, violent crime and illegal drugs. When you look at violent crime, this is down nearly 10% on last year and we continue to have highest crime detection rate in the county of Surrey. Overall reported crime is slightly up on last year by just over 1% but again our crime detection rate is up.

Often our biggest issue is the reporting of incidents so I can then best direct my limited resources. Reports of anti-social behaviour remains lower than last year however we know that people don't always contact us about everything. That's one of the reasons why run our 'meet the beat' events and attend resident meetings so we can ensure we are capturing this missed reporting.

I want to continue my message to the residents of Spelthorne - please report any concerns otherwise we don't know it's happening and other areas that do will take priority. Surrey police recently secured funding from the Home Office of £1m pounds to help target crime/ASB 'hotspots'. We currently have two of the fifteen county wide hotspots in our area based on reported data. This is why I need you to report matters to us as it's so important, not just in terms of funding but directing our activity.

Matt Walton, Borough Commander, Surrey Police



Food for thought

One of Spelthorne's priorities is to protect our community and one of the ways we do this is to ensure the production, preparation, storage, distribution and supply of food by businesses within our Borough is safe. Within the Environmental Health department is a small team of staff who take on responsibility for enforcing the provisions of food safety legislation. This work includes food hygiene inspections, investigating complaints made against food businesses, providing advice to businesses, food sampling, imported food controls and investigating outbreaks of food poisoning.

The biggest part of our work is carrying out food hygiene inspections and issuing food hygiene ratings. We undertake approximately 350 unannounced inspections each year. There are around 840 food businesses within our Borough and this includes a wide variety of different types of operations such as restaurants, takeaways, food manufacturers, supermarkets, convenience stores, home caterers, market traders, warehouses, schools, nursing homes and hospitals. The frequency of inspection ranges from once every six months to every three years, depending on the risk presented by the business to the

public. Businesses are provided with a food hygiene rating, the highest rating being 5 for 'very good' and the worst 0 for 'urgent improvement required'.

The team has powers to close a food business if it presents an imminent risk to public health, for example if there's an infestation of pests, poor structural conditions or contamination by sewage. The vast majority of businesses within Spelthorne achieve a rating of 3 (satisfactory) or higher. Those businesses with a rating of 2 or lower receive revisits and additional monitoring checks between routine inspections. You can check the ratings of food businesses online at ratings.food.gov.uk.

Around 80 complaints are received against food businesses each year. The subject of these complaints includes allegations of illness, poor hygiene practices, concerns about cleaning and general repair, pest infestations and foreign body allegations. We also work closely with our colleagues at the UK Health Security Agency and each year receive around 140 notifications of illnesses which could be linked to contaminated food or water. We investigate these notifications to try to identify the source and prevent the spread of illness.

For further information, contact the Environmental Health team by email at eh.commercial@spelthorne.gov.uk or call 01784 451499

Changes to HMO licences

Houses in Multiple Occupation (HMOs) are residential properties which are occupied by five or more people and form at least two households. This type of property has to be licensed by Spelthorne Borough Council and the process for this has recently changed.

Previously licences were issued by the Council to landlords for up to five years. Under the new scheme, licences are now granted a one, three or five-year licence term, depending on the risk rating of the property.

With a focus on risk assessment, Spelthorne Council aims to encourage HMO landlords to take proactive steps to address any identified risks, promoting a safe environment for tenants. Existing HMO licence holders will be transferred to the new scheme upon expiry of their current licence.

For more details about the scheme or to download an HMO licensing application pack, visit the Council's website at www.spelthorne.gov.uk/hmo

Report it

Do you know of an HMO without a licence? You can report it to Spelthorne Council's Environmental Health team by emailing eh.residential@spelthorne.gov.uk or call 01784 446251.



Looking for a cattery or kennels?

As holiday time approaches, pet owners may look for someone they can trust to care for their pets in a safe and suitable environment while they are away.

If you are looking for someone to provide accommodation for your dog or cat, you can check if they are licensed for animal boarding and find out what their star rating is. Businesses (including individuals working from home) should be able to provide you with these details or you can check the Council's website.

Licences are only issued to businesses and individuals who can demonstrate their compliance with minimum animal welfare standards. The star rating (one is the lowest and five the highest) takes into account considerations such as the length of time a business has held a licence and compliance with optional higher standards.

A list of businesses licensed with Spelthorne is available on our website at www.spelthorne.gov.uk/animal.

For further information, contact the Environmental Health team by email at eh.commercial@spelthorne.gov.uk or call 01784 451499

New Public Space Protection Order gets the go-ahead

Following a public consultation in January, Spelthorne Borough Council has introduced a Public Space Protection Order (PSPO) to tackle a number of issues which have been concerning residents.

The Order covers:

- a ban on tents or similar structures being used on public land (to prevent littering)
- a ban on any device for cooking (e.g. barbecues) in parks or open space (to prevent risk of fire and damage to the area)
- the introduction of an exclusion zone covering Stanwell Moor and parts of Stanwell where taxis and private hire vehicles are prohibited from parking

The PSPO enables the Council's Joint Enforcement Team to issue Fixed Penalty Notices in relation to the issues

outlined above and prosecute repeat offenders.

To see the full results of the 'Misuse of Public Land PSPO' consultation, visit www.spelthorne.gov.uk/PSPO

To report any of the issues mentioned above, or problems such as fly-tipping, noise, dog fouling, graffiti, bonfires or antisocial behaviour, visit www.spelthorne.gov.uk/report or call 01784 451499.



SURREY'S TRUSTED PHARMACY & VACCINATION CLINIC.

24/7 PRESCRIPTION COLLECTION
AND WALK-IN CLINIC



- Pharmacy First Services
- Travel & Vaccination Clinic
- Mobility Centre
- Veterinary prescriptions
- Earwax removal
- Blood pressure checks



www.triopharmacy.co.uk 01932 225900 19-21 High Street, Shepperton, TW17 9AJ

We can collect your unwanted textiles and small electricals

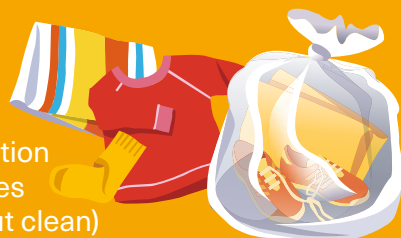
Textiles

Yes please

- ✓ clothing in any condition eg. with holes or stains (but clean)
- ✓ accessories such as scarfs, gloves, hats, belts and bags
- ✓ blankets, sheets, throws, pillowcases duvet covers, curtains, towels and tea towels
- ✓ tights, underwear, socks, shoes, boots and slippers in pairs

No thanks

- ✗ pillows and duvets



Small electricals

Yes please

- ✓ irons, toasters, kettles with cables
- ✓ laptops, calculators, mobile phones, chargers, hairdryers, clippers and straighteners
- ✓ lamps, torches, cameras, power tools, smoke detectors and thermostats, remote controls, remote controlled cars
- ✓ batteries, connectors, clocks and watches

No thanks

- ✗ lightbulbs, large items like televisions, vacuum cleaners, PC monitors and white goods



We collect every week - tie your textiles and small electricals in separate carrier bags and place them on top of your bin on your collection day.

Alternatively, take them to one of our recycling banks - visit www.spelthorne.gov.uk/rblocations for a list of locations.

Keep Spelthorne Clean

Keep Spelthorne Clean is a community campaign encouraging everyone to take pride in Spelthorne by helping to make a difference in our neighbourhoods, town centres, parks and open spaces. As a Council we are committed to maintaining Spelthorne as a clean and green borough and together we are all responsible for the environment around us.

We are addressing problems such as litter, graffiti, dog fouling and fly-tipping and are asking residents to keep reporting issues to us so we can resolve them as quickly as possible.

We have taken several actions to make this Borough cleaner and safer for our residents. There is also a great deal being achieved by community groups, such as Spelthorne Litter Pickers, which we are very grateful for. We also thank the school children who took part in our poster competition.

Our actions:

- implemented a Public Space Protection Order on the misuse of public land for taxis, tents and barbecues, following a residents' consultation (see page 25)
- secured funding to install CCTV cameras to manage fly-tipping hotspots
- trialing new ways of working to address the issues of street sweeping in difficult to access roads
- responding to requests to remove public facing and offensive graffiti within 48 hours

1. Carys, Buckland School, 2. Alexander, Buckland School, 3. Milana, Hawkedale School, 4. Lacey, Buckland School

Report offenders: 01784 446411, litter@spelthorne.gov.uk
www.spelthorne.gov.uk/report, or scan the QR code

Do you want to be part of Keep Spelthorne Clean?

- If you want to arrange a litter pick, we can supply a range of equipment including bags, litter pickers, signage and gloves and can collect the litter afterwards.
- If you are part of a Residents' Association, help us identify specific areas where some additional focus may be needed to tackle local issues. This could include extra street sweeping if you can arrange for your road to be kept clear of cars.
- If you are part of a community group and working on a project to tidy up or improve your local area, approach your Ward Councillor who may be able to support you with a Better Neighbourhood Grant.
- Let us know about any issues by reporting them at www.spelthorne.gov.uk/report or calling 01784 446411

For more information on the campaign, visit www.spelthorne.gov.uk/keepspelthorneclean

Spelthorne in Bloom poster competition



More than 120 gardeners and pupils from local primary schools met at Squires Garden Centre in Halliford on 16 April to launch the annual Spelthorne in Bloom campaign and to recognise the winners of the Children's Poster Competition for 2024.

Sarah Squire, Chair of Squire's Garden Centre, welcomed the guests and thanked them for their help in keeping Spelthorne

looking beautiful. The overall winner was Olivia from Our Lady of the Rosary primary school in Staines-upon-Thames whose beautiful Olympics-themed design features on this year's competition entry forms and posters. Olivia and the other winners were presented with prizes by the Mayor

and Nick Wood-Dow, Chair of the Spelthorne in Bloom Committee.

Category	Winner
Overall winner	Olivia, age 10, Our Lady of the Rosary School
SEND poster winner	Pink Class, Manor Mead School
Hand drawn posters, age 4 - 6	Isabelle, age 6, St Michael Catholic School
Hand drawn posters, age 7 - 8	Millie, age 7, St Michael Catholic School
Hand drawn posters, age 9 - 11	Olivia, age 10, Our Lady of the Rosary School
Computer generated posters	Charlie, age 10, Staines Preparatory School

Judging is currently taking place for Spelthorne in Bloom and the winners will be announced in November.

For more information about Spelthorne in Bloom, visit www.spelthorne.gov.uk/SIB, email spelthorne.inbloom@spelthorne.gov.uk or call 01784 444288

The Shahin

Exquisite Indian Cuisine

Est. 1965

Dine with us & experience the magical taste of *India.*

Tuesday banquet night | £23.50 per person

**EXCLUSIVE
DINING IN VOUCHER**

£10 OFF

*Sunday - Thursday only, one voucher per table. Excludes drinks and desserts.
Not to be used in conjunction with any other offer. Excluding special days and events.
Valid until 30/11/2024

**10% OFF TAKEAWAY COLLECTION
ORDERS ONLINE USE CODE
"SHAHIN10"**



www.shahinrestaurant.co.uk

67 Thames St, Sunbury-on-Thames, TW16 5QF
FOR RESERVATIONS PLEASE CALL **01932 785 001**

Join us for two great nights
of comedy, plus a family friendly
show on Saturday afternoon

Anniversary Weekend
10 Years

8th and 9th November 2024
Riverside Arts Centre, Sunbury

Basil Brush Unleashed for grown ups



Dino panto show on Saturday



Zoe Lyons



Raymond and Mr Timplins Revue



Scan for tickets



@LaughingChiliUK facebook.com/laughingchili | All details and tickets at www.laughingchili.co.uk

Celebrating 10 years of fun with Laughing Chili Comedy