

9 Your local
councillors

12-13 summer fun and
free outdoor theatre events

23 Meals
on Wheels

HELPING TO KEEP **EVERYONE** SAFE IN THE WATER



LEARN TO SWIM WITH AWARD-WINNING LESSONS AT OUR SPELTHORNE AND SUNBURY LEISURE CENTRES

We all love to swim! Not only does being able to swim allow you to enjoy your time a little bit more on holiday, but the most important reason is that swimming is the only sport that can save you or your child's life.

Why learn to swim with us?

- Learn from four months old
- Adult lessons available
- Available up to seven days a week
- All teachers are Swim England or equivalent qualified
- Pay monthly by Direct Debit
- Follow your child's progress on our interactive Aqua Passport

JOIN US TODAY

everyone **ACTIVE**



SCAN ME FOR INFORMATION



or visit joinonline.everyoneactive.com/lessons

For more details and availability, visit
www.everyoneactive.com

everyone
ACTIVE

Letter from the Leader



Dear Residents,

I am Cllr Joanne Sexton and I was recently elected to the position of Leader of the Council. I am very excited about my new role and can't wait to start making positive changes for all the residents of our Borough. As councillors we are all here to represent our residents and take that responsibility very seriously. If you have any ideas or concerns you would like to discuss with me, please do not hesitate to get in touch.

I would very much like to welcome all elected councilors particularly those new to our organisation. I would also like to congratulate Cllr Chris Bateson on his appointment as Deputy Leader, I look forward to working closely with him to deal with the many challenges ahead this Council faces. I would also like to congratulate Cllr Denise Saliagopoulos who was elected as Mayor and is following in her mother's footsteps in this role, and Cllr Elizabeth Baldock as the Deputy Mayor. I wish them all every success in the year ahead. You can find out more about the new Mayor on page 5 and see a list of all our councillors on page 9.

We have another packed edition of the Bulletin for you and I hope you find the information useful. In the centre spread we have details of some of the events running in Spelthorne over the summer – covering a wide range of activities which include events on water to outdoor theatre and music events. Most of them are family-friendly and many are also free to attend.

If you don't already know, we run a fantastic Meals on Wheels service for anyone who finds it difficult to prepare their own food. The team are really friendly and many people like having someone visit on a regular basis. We have an interview with Patti Rogers on page 23 which gives a lot more information if you're interested in this service.

Finally, I hope you have a good summer and get a chance to come along to one of our events.

Cllr Joanne Sexton, Leader of the Council

 cllr.sexton@spelthorne.gov.uk

Report fraud

If you suspect someone is committing fraud in Spelthorne, you can report it anonymously:

- unlawful subletting
- abandoning social housing
- obtaining housing by deception
- falsely claiming to be homeless
- claiming housing reductions/discounts for addresses they don't live at
- failing to tell us other adults are living with them
- falsely claiming to be a student
- claiming to be the sole occupant of a property that is empty
- falsely claiming business discounts or relief
- failing to declare they have another business or claiming a false charitable exemption



Report online at www.report-fraud.co.uk/spelthorne or call 01737 276 620

Contents

Community	
Community news	6
Your local councillors	9
Economic Development	
Spelthorne Business Awards	7
Environment	
Net Zero Innovation Programme	10
Spelthorne in Bloom	19
Leisure	
Summer events	12-13
New leisure centre	15
Independent Living	
Extra care housing	17
Independent living	22
Meals on Wheels	23


Bulletin enquiries: 01784 446432 / 01784 444260
Editors: Jennifer Medcraft / Louise King
Design: Tanya Allen
Cover: Includes "A Bee Story" performers, "The Linden Wind Orchestra", "Gravity" performers - photo © Duncan Walker and Getty Images.

Advertising enquiries: Send an email to frontline@frontlinedesigners.co.uk or call 01342 312570.





Spelthorne Borough Council does not accept responsibility for, or endorse, any products or services offered by advertisers.

The Bulletin is available in large print and on CD. Please email l.king@spelthorne.gov.uk or call 01784 444260.


The Bulletin is our community magazine produced by Spelthorne Borough Council, delivered free to every home in Spelthorne. Circulation 46,000.

 Printed on recycled paper.



Follow us on Social Media:
 @spelthornebc
 @spelthornebc
 @spelthorneboroughcouncil
 Spelthorne Borough Council


Phone us on
01784 451499

 Visit Spelthorne Borough Council's website www.spelthorne.gov.uk

 Sign up for the monthly electronic newsletter containing news, events, planning applications and more
www.spelthorne.gov.uk/enews



LOOKING FOR A NEW JOB THIS SUMMER?

Cantello Tayler Recruitment provide permanent, temporary and contract roles for a wide range of industries and sectors.

Scan the QR code above for a list of our current vacancies, or call us today to discuss how we can help you find your new job.

01753 428000 - www.cantellotayler.com



WHY STAGECOACH?

At Stagecoach Performing Arts, we give our students the **creative courage** to embrace life and make the most of their talents and opportunities.


- 30 years' experience in performing arts teaching
- Over 600 schools worldwide
- 1 million children supported to reach their potential
- Regular national events at iconic theatres
- Over 22,000 casting opportunities via our talent agency
- A unique educational framework

Your child will learn how to

SING, DANCE & ACT

while developing a broad range of life skills.

STAGECOACH STAINES

 www.stagecoach.co.uk/staines

 07802800633  staines@stagecoach.co.uk

Classes are held at Thomas Knyvett College, Stanwell Rd, Ashford TW15 3DU on a Friday after school and Saturday's. Now accepting childcare vouchers



Creative Courage For Life®

HOLIDAY WORKSHOP

24th-28th July
28th-31st August

Every Step of the Way



STAINES PREPARATORY SCHOOL
Explore the Staines Prep Way

The exceptional educational foundations and support your child needs to forge their own path.

- Co-educational prep school for children aged 3-11.
- High quality curriculum with strong history of placement at selective destination schools.
- Competitive fee structure.
- Outstanding facilities conveniently located near Staines station.

Join our Open Day

Friday 6th October 9.30am - 11.30am

or arrange a personal tour.

Book now at:

 admissions@stainesprep.co.uk

 www.stainesprep.co.uk

 or by calling 01784 450909

A new Mayor for Spelthorne

Carrying on her mother's legacy is the mission of Spelthorne's new Mayor, Cllr Denise Saliagopoulos. The Mayor took over the chains of office from Cllr Susan Doran at the Annual Council Meeting on 25 May 2023.

Cllr Saliagopoulos is the daughter of the late Cllr Isobel Napper, who was Mayor in 2013. Cllr Napper, sadly, was unable to finish her term of office due to her passing in August of that year due to breast cancer.

Cllr Saliagopoulos will be raising money for the Jasmine Suite over the course of her Mayoral year. She said: "My Mother, the late Mayor of Spelthorne, unfortunately did not finish her term due to her death. I am so honoured to be chosen by my peers to carry on her charity wishes through my term. One of my charities

will be the Jasmine Suite at Ashford Hospital. The opening of the Suite was the last official engagement my mother carried out. The Suite is dedicated to the care of our residents with breast cancer and their treatment. It will be my great honour to continue to support this. One in three women will suffer from breast cancer, which is a truly frightening statistic."

Cllr Saliagopoulos has lived in Spelthorne her whole life where she brought up her son George. Her husband, Yanis, like her father, owned his own Stonemasonry business in the Borough.

She now works for a care provider and has a great passion for helping those living with dementia and wants to highlight this growing health issue.



Her second charity therefore is Daybreak who provide a care respite facility at St Peter's Church in Staines-upon-Thames. She said: "Carers and families can bring their loved ones to Daybreak in the knowledge that they will be well supported and looked after. They particularly welcome those with dementia, which is something that I care passionately about. It is a growing issue for our elders, and sometimes younger people too."

For more information about the Mayor and her charities, visit www.spelthorne.gov.uk/mayor
Contact the Mayor's office by email mayor@spelthorne.gov.uk or call 01784 446275

Coronation celebrations

Spelthorne was awash with red, white and blue as we celebrated the Coronation of King Charles III and Queen Camilla over the Bank Holiday weekend in May. With picnics in the parks, street parties and celebrations at the Community Centres, residents were ready to mark this momentous occasion.

Some of you braved the inclement weather on the Saturday for our Coronation Party at Lammas Park in Staines and enjoyed the entertainment despite the relentless rain. Thankfully the weather improved

on the Sunday for our live band performances in the Walled Garden in Sunbury.

We hope you enjoyed your own celebrations and had fun with family, friends and neighbours, or took the opportunity to volunteer during the Big Help Out on Bank Holiday Monday.

Thank you to all the Council staff who helped to organise our events and the local school children who made beautiful bunting flags which were displayed in the high street and stores in Staines-upon-Thames.



Taxi and private hire licensing

Spelthorne Borough Council is responsible for ensuring that taxi/private hire drivers, proprietors and operators meet the relevant conditions to hold licences.

Licensed drivers undergo an enhanced criminal record check, have a high standard of medical fitness, pass tests in the knowledge of the Borough, have basic English and numeracy, undergo certain training and pass a driving assessment.

Their vehicles must be fit for purpose, comfortable, and have regular MOTs and suitable insurance. Operators must also be licensed and abide by rules on record keeping. Since the Immigration Act 2016, all licence holders must have the right to work in the UK.

You can contact Spelthorne's Licensing team if you have any comments, compliments or complaints about your Spelthorne taxi or private hire journey.

For more information, visit www.spelthorne.gov.uk/taxiandprivatehire



Spelthorne honours volunteers

Spelthorne Borough Council paid tribute to 12 volunteers at the 40th anniversary of the Civic Trust Awards, which honours residents for their voluntary service in the Borough, in a ceremony on 18 April. Spelthorne Civic Awards Trust recognises individuals who have given at least 12 years' service to volunteering in the Borough, while letters of commendation are awarded to those who have done a further 10 years.

Civic Awards

- Barbara Barnard, Princess Alice Hospice Shop, Shepperton, St Nicholas Church
- Jacqueline Bond, Leader 2nd Sunbury Guides
- Donnica Colman, Laleham Residents Association
- Nycki Day, Joint District Commissioner, Sunbury Girlguiding

- Dik Gregory, Shepperton Village Fair
- Jim Mathieson, Burway Rowing Club
- Christine Miles, The Phoenix Project, Leader Staines Girlguiding
- Isobel Parr, Joint District Commissioner, Sunbury Girlguiding
- Wendy Ransom, St Peters Church, Manna Foodbank, Leader 7th Ashford Girlguides
- Wendy Wallis, Leader 6th Sunbury Rainbows

Letter of Commendation

- Eric Champion, Riverside Arts Centre
- Robin Sider BEM, Shepperton Village Conservation Group, Spelthorne MS Society, Armed Forces Champion

Daybreak respite care

Daybreak offer respite care and support for older people in the community and people with chronic illnesses, physical disabilities, dementia or social isolation.

We aim to give carers a well-earned break for five hours on a Tuesday, while the person they look after receives respite care of the highest standard. We provide a happy and vibrant environment where people

can enjoy some company, a home cooked meal and regular musical entertainment. Our provision of care includes blood pressure/sugar monitoring, continence care, dietary needs, personal care and supervision of prescribed medication. Each guest has an individual care plan.

We are based at St. Peter's Church Hall, Laleham Road, Staines, TW18 2DX and are open from 10am – 3pm every Tuesday (excluding Christmas and Easter). The cost is £30 per day which includes a two-course lunch and all refreshments.

For more information, contact Care Manager Sally Kidd on **077610 47930** Monday Friday, or email sallykdaybreak@gmail.com

Staines Parochial Charity

Staines Parochial Charity will be allocating their annual financial grants in the autumn to local residents who are facing financial difficulties due to problems such as poor health, disability, low income or homelessness. Relevant charities can also apply.

To be eligible for a grant, you must have lived in the Staines area for at least two years (or in the case of charities, been active in Staines for at least two years).



To request an application form, call June Stillwell on **07885 846840** or email june.stillwell@btinternet.com. The deadline for completed applications is **Monday 16 October**



New disabled sport association

North Surrey Sports Association for Disabled People has recently been set up to provide more opportunities for disabled people within Spelthorne and neighbouring areas to participate in sport. It is intended to raise funds for setting up clubs, providing coaching and competition for disabled people and training for coaches.



If you are interested in finding out more, please email nssadp@gmail.com



SPELTHORNE BUSINESS AWARDS 2023

Entries for this year's Spelthorne Business Awards are now open.

There are 17 categories to choose from, including two new categories - Best Hospitality and Leisure Business and Retail Excellence Award.

Town Category

- Best Business in the Staines-upon-Thames BID area
- Best Business in Staines-upon-Thames and Laleham
- Best Business in Sunbury and Halliford
- Best Business in Ashford and Stanwell
- Best Business in Shepperton and Charlton Village

Business Sector Category

- Overseas Trader of the Year
- Creative / Innovative Business
- Best Construction and Property Business
- Healthy Business Award
- Best Franchise of the Year
- Best Small Business
- Best Sustainable Business of the Year
- Best Corporate Social Responsibility
- Best New Start Up
- Community Service Provider of the Year
- Best Hospitality and Leisure Business
- Retail Excellence Award

The winners of each category will be shortlisted for the Best Business in Spelthorne award. The competition is free to enter for any business with a trading address in Spelthorne.

Online entry is open until midnight on 2 October and the black-tie gala dinner to announce the winners will take place on 24 November.

For more details and to enter, visit www.spelthorne.gov.uk/SBA

MENOPAUSE BEAUTY & WELLBEING

....LET'S TALK ABOUT IT

PLATINUM
BODY &
ANTI AGEING FACE
TREATMENTS
+FREE AFTERCARE



GOLD
ANTI AGEING FACE
TREATMENTS
+FREE AFTERCARE



SILVER
THREAD VEIN REMOVAL
PRE-PAY
3 SESSIONS
+NOSE & CHIN FREE



BRONZE
MENOPAUSE SPECIAL
SAVE 30% ON
SKIN TAG REMOVAL*




GET IN TOUCH TO
DISCUSS OPTIONS,
OR COME
FOR A **FREE**
CONSULTATION



Alumier
OFFICIAL SKINCARE
A ROUTINE TAILORED
FOR YOUR NEEDS.
**PERI MENOPAUSE
SKINCARE BUNDLE**

OTHER TREATMENTS

5* HYDROFACIAL
DERMATOLOGY
ACNE, PIGMENTATION
CHEMICAL PEELS
RADIOFREQUENCY MICRONEEDLING



Open 6 days a week
Late evening appointments available
(Additional treatments/gift vouchers are available on request)
20 Avon Road · Sunbury-on-Thames · TW16 7TB

E: monika@facialbodysculpting.co.uk

T: 07990 088137

  @facialbodysculptingbymonika



ALDRIDGE & SONS

Roofing Contractors & Consultants

020 8844 0542 aldridgeandsons.co.uk

DOMESTIC & COMMERCIAL ROOFING SPECIALISTS

Aldridge & Sons Roofing Ltd has an unrivalled reputation for quality workmanship and customer service in both domestic roofing and the commercial roofing sector.

Recognising having roofing work completed to your home can be a daunting process our aim is to help our clients understand the process without feeling overwhelmed.

**Domestic roof & chimney repairs • Domestic new work & re-roofing, slate & tiled
3-layer 250 high performance built up felt • Firestone rubberised roofing • Alwitra single ply
Lead roofing • Guttering including new work & repair • UPVC cladding fascia's & soffit
Moss removal • Flat roofing systems • All commercial roofing**

If you are replacing 50% or more of your roof, you are legally obliged to upgrade the insulation and obtain a Building Regulations Compliance Certificate (BRCC) from your local authority building control.

As NFRC CPS contractor we have the unique ability to self-certify any work we complete complies with the relevant Building Regulations in England and Wales saving our clients time and money.

CALL 020 8844 0542 OR 07984 351 607



TRUSTMARK
Government Endorsed Quality



Your Spelthorne Borough Councillors

Borough councillors are elected by the community to make decisions on behalf of residents about local services including rubbish and recycling, environmental health, services for older people, planning, housing, leisure facilities and parks. They represent their ward areas for four years. Councillors are not paid a salary for their work, but they do receive an allowance. If you have a problem in your area or wish to comment on an aspect of the Council's service, you can contact one of your local councillors.

Key:

- Conservative
- Green Party
- Independent Green
- Independent Spelthorne Group
- Labour
- Liberal Democrat

If you are not sure who your local councillor is, visit: <http://my.spelthorne.gov.uk>. Call Committee Services on **01784 446240** or email committee.services@spelthorne.gov.uk

Ashford Common



Simon Bhadye

cllr.bhadye@spelthorne.gov.uk



Naz Islam

cllr.islam@spelthorne.gov.uk



Katherine Rutherford

cllr.rutherford@spelthorne.gov.uk

Ashford East



Elizabeth Baldock

cllr.baldock@spelthorne.gov.uk



Rose Chandler

cllr.chandler@spelthorne.gov.uk



Joanne Sexton

cllr.sexton@spelthorne.gov.uk

Ashford North and Stanwell South



Sean Beatty

cllr.beatty@spelthorne.gov.uk



Med Buck

cllr.buck@spelthorne.gov.uk



Rebecca Geach

cllr.geach@spelthorne.gov.uk

Ashford Town



Michelle Arnold

cllr.arnold@spelthorne.gov.uk



Andrew McLuskey

cllr.mcluskey@spelthorne.gov.uk



Olivia Rybinski

cllr.rybinski@spelthorne.gov.uk

Halliford and Sunbury West



Sandra Dunn

cllr.dunn@spelthorne.gov.uk



Lawrence Nichols

cllr.nichols@spelthorne.gov.uk



John Turner

cllr.turner@spelthorne.gov.uk

Laleham and Shepperton Green



Darren Clarke

cllr.clarke@spelthorne.gov.uk



Karen Howkins

cllr.howkins@spelthorne.gov.uk



Anant Mathur

cllr.mathur@spelthorne.gov.uk

Riverside and Laleham



Daniel Geraci

cllr.geraci@spelthorne.gov.uk



Michele Gibson

cllr.gibson@spelthorne.gov.uk



Denise Saliagopoulos

cllr.saliagopoulos@spelthorne.gov.uk

Shepperton Town



Maureen Attewell

cllr.attewell@spelthorne.gov.uk



John Boughtflower

cllr.boughtflower@spelthorne.gov.uk



Lisa Brennan

cllr.brennan@spelthorne.gov.uk

Staines



Malcolm Beecher

cllr.beecher@spelthorne.gov.uk



Adam Gale

cllr.gale@spelthorne.gov.uk



Howard Williams

cllr.williams@spelthorne.gov.uk

Staines South



Chris Bateson

cllr.bateson@spelthorne.gov.uk



Tony Burrell

cllr.burrell@spelthorne.gov.uk



Jolyon Caplin

cllr.caplin@spelthorne.gov.uk

Stanwell North



Jon Button

cllr.button@spelthorne.gov.uk



John Doran

cllr.jdoran@spelthorne.gov.uk



Susan Doran

cllr.doran@spelthorne.gov.uk

Sunbury Common



Mary Bing Dong

cllr.dong@spelthorne.gov.uk



Harry Boparai

cllr.boparai@spelthorne.gov.uk



Suraj Gyawali

cllr.gyawali@spelthorne.gov.uk

Sunbury East



Kathy Grant

cllr.grant@spelthorne.gov.uk



Matthew Lee

cllr.lee@spelthorne.gov.uk



Buddhi Weerasinghe

cllr.weerasinghe@spelthorne.gov.uk



Solar Together

Solar Together is running in Spelthorne again. It is a group buying scheme that enables you to install high-quality, roof mounted solar panels at a competitive price. You can also choose to fit a domestic battery system to store surplus electricity generated by the solar panels and use it when it's needed.

Having your own solar panels can be an intelligent investment; not only can you reduce your energy bills, but you will be powering your home with clean energy.

For more information and to register, visit, <https://solartogether.co.uk/surrey>



Electric vehicle charge points

Spelthorne Council is committed to improving the infrastructure for charging electric vehicles. As part of this commitment, we are working with Surrey County Council to share our residents' suggestions as to where future electric vehicle chargers could be located. This data is shared with all the Surrey boroughs.

To make a suggestion, visit <https://surreyev.commonplace.is>

Net Zero Innovation Programme



Spelthorne Council recently worked with the Open University and Talking Tree to secure funding from the Local Government Association's Net Zero Innovation Programme which was used to run workshops to design community-led actions on climate change.

The workshops ran from January – May, where members of the community discussed how climate change is affecting Spelthorne and what the best 'future version' of Spelthorne would look like. The

workshops were documented by six young people from the Spelthorne Youth Hub who were trained in digital documenting and editing for the project.

A shortlist of six projects were ranked, with two chosen to be taken forward by the group – community food growing and rewilding areas of the Borough.

If you would like to get involved in these projects, which are open to everyone, please email sustainability@spelthorne.gov.uk



Carbon Literacy training

Meeting the target of Net Zero emissions is everyone's responsibility and the Council is rolling out Carbon Literacy training for all its staff and councillors to provide everyone with an understanding of the science of climate change and the carbon emissions created in their working and personal lives.

Staff can become certified after attending the training and making

two pledges to reduce their carbon emissions in the workplace. Our staff members know their role best and can identify changes to reduce carbon emissions that may not have been obvious to others. We have already received some pledges including reducing the number of fridges in our offices to cut-down on the amount of electricity the Council uses.

Please ensure that you do not employ people to remove your rubbish unless you have checked they hold an Environment Agency Waste Licence and they've provided you with a waste disposal notice. You can check by visiting the Environment Agency's website at <https://environment.data.gov.uk/public-register/view/search-all>

By making a few small changes to what we put in our bins we can have a huge impact on how much of our waste gets reused and recycled.



The items that cannot be reused as wearable clothing are either broken down into rags which are sold to industry, reducing the need for paper or virgin fibre fabrics, or reduced to fibres and remanufactured into insulation products. One of the primary markets for these is the automotive industry - you could be driving around with your old jeans under the bonnet.



This summer our new waste collection fleet will start to appear on our streets. We have new recycling, garden waste, food collection and general purpose vehicles arriving over the next few months with a smart new livery that clearly identifies our waste collection vehicles. We'll be coming to empty a bin near you!



Saturday 15 July, 2.30pm Ashford Horticultural Society Summer Show

Come along and enjoy the atmosphere and display of our summer flower and produce show.

Venue: St. Matthew's Church Hall, Muncaster Close, Ashford, TW15 2EE

Cost: Free

For more information, visit www.ashfordgardeningclub.org.uk, email barbara.baghapour@live.co.uk or call 07949 989366

Saturday 15 July, 7.30pm Spelthorne Choral Society: Songs of the Sea

Concert featuring Stanford 'Songs of the Fleet' 'Revenge', 'Parry' and 'The Chivalry of the Sea'. We are supporting the RNLI.

Venue: St Peter's Church, Laleham Road, Staines-upon-Thames, TW18 2DX

Cost: £12 online, £15 on the door, accompanied children free

For more information, visit www.spelthornechoralsociety.com

Tuesday 18 July, 6.30pm-8.30pm Surrey Canoe Club: Nelson Mandela Day Event

Family and youth taster session. Min Age 8. Boat, equipment, coaching and insurance included. Advance booking is essential.

Venue: Surrey Canoe Club, Thameside, Next to M3 Motorway Bridge, Laleham, TW18 1FA

Cost: £10 per person event rate

For more information, visit <https://surreycanoeclub.org.uk>, email admin@surreycanoeclub.org.uk or call 07447 049157

Saturday 22 July,
11am-4pm

Spelthorne Museum: Archaeology Activity Day

Hands-on fun activities related to archaeology, sifting, pottery examination, artefact analysis, learning about Spelthorne's rich history with help and guidance from museum staff. No booking required.

Venue: Spelthorne Museum, access via Staines Library, Friends Walk, Staines-upon-Thames

Cost: Free

For more information, visit www.spelthornemuseum.org or call 01784 461804



Saturday 22 July, 10am-2pm Spelthorne Resource Centre: Art Open Day

Bring your children along and have fun together making summer themed crafts. For families with children aged 4-11 years. Children must be accompanied by a parent/ carer. No booking necessary.

Venue: Staines Park, Commercial Road, Staines-upon-Thames, TW18 2QW

Cost: £1 per child (50p for siblings)

Visit www.spelthorne.gov.uk/resourcecentre, email leisure@spelthorne.gov.uk or call 01784 461769

Wednesday 26 July, 8pm Staines Comedy Club

Staines Comedy Club brings you the four top comedians on the UK comedy circuit. This summer we are hosting a session on 26 July at the London Stone.

Venue: London Stone 14 Church St, Staines-upon-Thames, TW18 4EP

Cost: £5 entry

Visit visitstaines.co.uk or email info@visitstaines.co.uk



Saturday 29 July,
2pm and 7pm
School of Rock

School of Rock is a musical, based on the hit movie. The show follows Dewey Finn, a failed, wannabe rock star who decides to earn an extra bit of cash by posing as a substitute teacher at a prestigious prep school.

Venue: Riverside Arts Centre, Sunbury-on-Thames, TW16 5QF

Cost: £16 / £18

Visit www.theiamt.co.uk, email info@theiamt.co.uk or call 07309 721663



Saturday 12 August, 10am -4pm Surrey Canoe Club: Youth Day Event

Youth Paddle Discover Beginners Award. British Canoeing Qualification. Min age 8 years old. Boat, equipment, coaching and insurance included. Advance booking is essential.

Venue: Surrey Canoe Club, Thameside, Next to M3 Motorway Bridge, Laleham, TW18 1FA

Cost: £152 per person

Visit <https://surreycanoeclub.org.uk>, email admin@surreycanoeclub.org.uk or call 07447 049157

Sunday 13 August, 12 noon - 4.30pm Fuchsia Show

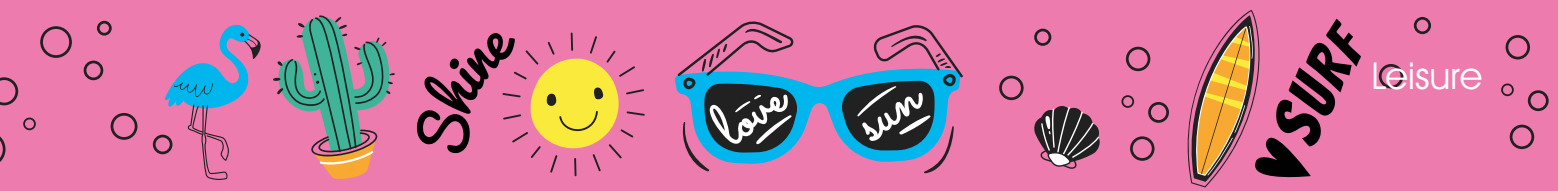
This national show is held by the British Fuchsia Society and is a fantastic chance to enjoy beautiful displays by award-winning growers from across the country.

Venue: Squire's Garden Centre Shepperton, Halliford Road, TW17 8SG (held in the Orangery)

Cost: Free

Visit www.squiresgardencentres.co.uk/whats on or call 01932 789823





Free outdoor theatre events in Staines



Wednesday 2 August, 11am and 2pm
A Bee Story
 A unique physical theatre show incorporating a kaleidoscope of circus, acrobatics, dance and live music. It tells the story of Queen Bee and Worker Bee who must work together to rebuild their hive.

Venue: Memorial Gardens, Staines-upon-Thames, TW18 4SD

Wednesday 9 August, 11am and 2pm
Gravity
 Inspired by the first moon landing, Gravity combines hand-to-hand acrobatics with Motionhouse's signature contact choreography.

Venue: High Street, Staines-upon-Thames, TW18 4AH



Wednesday 16 August, 10am-4pm
Circus Skills with Patches
 Roll up! Roll up! Patches is in town and she wants you to all visit her circus school where you can try spinning plates, diablos and juggling, while Patches makes you a balloon animal.

Venue: High Street, Staines-upon-Thames, TW18 4AH



Wednesday 23 August, 1pm
The Adventures of Peter Rabbit
 Peter Rabbit and his naughty cousin Benjamin know that they are not to go into Mr McGregor's garden, but they cannot resist and find themselves face to face with Mr McGregor himself!

Venue: Memorial Gardens, Staines-upon-Thames, TW18 4SD

Wednesday 30 August, 1pm
The Wind in the Willows
 Join Mole, Ratty and Badger on their mad-cap adventures in Quantum Theatre's brand-new adaptation of the Kenneth Grahame classic.

Venue: Memorial Gardens, Staines-upon-Thames, TW18 4SD

Music in the Park

Join us for an afternoon of music in the beautiful surroundings of either The Walled Garden, Thames Street, Sunbury-on-Thames, TW16 6AB or The Lammas Band Stand, Lammas Recreation Ground, Wraysbury Road, Staines-upon-Thames, TW18 4XZ. All performances start at 2pm and finish at 4pm. Please bring your own chairs or picnic blankets. Refreshments are available to purchase at both venues.



Date	Venue	Performer
Sunday 9 July	The Walled Garden	Linden Wind Orchestra
Sunday 16 July	The Walled Garden	West Drayton Brass Band
Sunday 23 July	The Walled Garden	Rock Choir
Sunday 30 July	The Walled Garden	Bourne Concert Band
Sunday 30 July	The Lammas Band Stand	Staines Brass Band
Sunday 6 August	The Walled Garden	Saxophany
Sunday 13 August	The Walled Garden	All that Jazz
Sunday 13 August	The Lammas Band Stand	Staines Brass Band
Sunday 20 August	The Walled Garden	Thameside Harmony Chorus
Sunday 27 August	The Walled Garden	Dale Harris Classical Guitarist
Sunday 3 September	The Walled Garden	Staines Lammas Band

Visit www.spelthorne.gov.uk/music, email leisure@spelthorne.gov.uk or call 01784 446433

YOUR LOCAL ELECTRICIAN

DO YOU WANT A QUICK RESPONSE
NO JOB TOO BIG OR TOO SMALL?

WHEN YOU NEED AN ELECTRICAL FAULT/
PROBLEM SOLVED, WE WILL SOLVE IT FOR
YOU. WE'RE WEARING FULL COVID PPE -
BE SAFE IN YOUR HOME AND AT WORK.

CONTACT **RICHARD** FOR A FREE SURVEY,
FREE CONSULTATION, FREE ESTIMATE.

FOR YOUR LOCAL QUALIFIED
ELECTRICIAN, NICEIC APPROVED.

CALL RICHARD
01784849181 OR 07875958912

www.electricianashfordmiddlesex.com or

www.facebook.com/ElectricianTWarea

HELP AT HOME

“It is like having
a friend
come round
to help”



**Our Home Helps take pride in building relationships
with the clients to ensure they feel safe and happy.**

Start as a client but end as a friend.

Help at Home is your doorway into a world of advice and
information for people aged 50+.

At Age UK Surrey we provide various services and activities
all geared to making older people get the most out of later
life. Our Social Activities will reopen in the summer, check
our website for more information.

HOUSEWORK

SHOPPING

COMPANIONSHIP

AND MUCH MORE

All our home helps are
comprehensively briefed,
have access to PPE,
maintain social distancing
and are security checked.



01483 503414

enquiries@ageuksurrey.org.uk
www.ageuk.org.uk/surrey

Charity No: 1036450

1SB0523

STORYBOARD

♦ AT SHEPPERTON ♦



Your local venue for all occasions!

Monthly Live Events | Tribute Nights | Self Catering Celebrations

Sunday Carvery - 18th June | 9th July | 6th August | 3rd Sept | 1st Oct | 5th Nov



Contact hotel or check Website for further information
www.storyboardatshepperton.com | 01932 899988



Storyboard at Shepperton
Holiday Inn London - Shepperton, Felix Lane,
Shepperton Middlesex TW17 8NP

Christmas Party Nights
now on Sale



New Leisure Centre on track for 2024

Excitement is building for the new Leisure Centre with the build remaining on track and just under a year to go until its expected completion in June 2024. The state-of-the-art facility will be located in Knowle Green in Staines-upon-Thames and benefit from a great range of facilities, including:

- a flagship roof-top design with four artificial 3G football pitches
- 25m eight lane swimming pool with micro filtration technology and spectator seating
- a 20m x 10m learner pool and a splash pad
- sauna and steam rooms
- two dedicated group changing rooms, four family changing rooms and swim showers
- six-court sports hall
- three squash courts with movable walls
- large fitness suite with dedicated free weights and warm-up area
- spin studio and two multi-purpose studios with views across Staines Park
- extensive bike storage and a 300-space car park

The structural frame for the centre has been completed and the aim is to have the building watertight by the end of September. All the walls and slabs to the learner pool, main pool, and basement have been cast and lots of works in the sports hall



Project team



Matt Kemp, Cllr Joanne Sexton, Cllr Susan Doran and Daniel Mouawad

and squash courts have already taken place. The extensive use of timber in the construction reduces the amount of carbon used in the overall construction of the building. The current leisure centre will remain open while the new one is being built.

Key dates:

Aug 2023	Completion of swimming pool
Nov 2023	Completion of external facade. Roof sport pitches building works begin
Dec 2023	Completion of internal sports hall
Summer 2024	Project completion

As well as being a modern design with all the latest facilities one would expect, the new leisure centre will also be extremely energy efficient as the first full scale leisure centre to be built to the ultra-low energy 'Passivhaus' standard. The Council expects the new centre to use between 60 and 70% less energy than a typical modern leisure centre - a major step in helping the Council achieve its aim of becoming carbon neutral in the coming years.

New course record at Staines 10K

Blake Moore from Windsor, Slough, Eton, and Hounslow Athletics Club smashed his own course record for the Staines 10K on Sunday 14 May finishing in a time of 29 minutes and 55 seconds, knocking 11 seconds off his time from last year.

The women's race was won by Kylara Hassall from Woking Athletics Club in a time of 39 minutes.

The event, organised by Staines Strollers and Runnymede Runners with support from Spelthorne Borough Council, saw 635 runners complete the course. There was a great community spirit with lots of supporters cheering the runners on and many volunteers involved including local scouts who manned the water station to ensure runners stayed hydrated.

This year's event was kindly sponsored by Rowberry Morris solicitors, Staines BID, Azets, Oasis, London House Companies, Thames Side Brewery and AC Breeze Air Conditioning and supported by Everyone Active, Runners' Retreat, Sport Systems, Collingwood Services, Staines Chiropractic, Laleham Camera Club and 1st Egham Scouts.

The full results of the 2023 race are available on the Staines 10k website at www.staines10k.co.uk and photos from the event can be viewed at <https://www.lalehamcameraclub.uk/Public-Events/Staines-10K-2023>



Photo credit: Laleham Camera Club

For more information, visit www.spelthorne.gov.uk/newleisurecentre

Helping you to live well for longer



Mole Valley Life

MOBILE • INDEPENDENT • SOCIAL



Operated by Mole Valley District Council, Mole Valley Life is here to give you and those you care for the reassurance and peace of mind needed to live safe and well at home for longer. Whether it be through the touch of a button on one of our Lifeline Alarms, or through one of our Wellbeing calls the Mole Valley Life team is here to support you 24 hours a day, 7 days a week, 365 days a year.

Mr. H has been using a lifeline alarm for over twenty years and he can't imagine his life without it. He believes that without the alarm, he would not be as independent as he is now. His late wife was also a lifeline alarm user and it gave him peace of mind knowing that she was taken care of when he went out to run errands.

Before Mr. H was a client himself, he had a fall due to tripping on his meal tray while getting up from his chair, he was left lying on the floor for more than an hour before his caregiver came in. It took another hour for an ambulance to arrive, which made him realise that he needed a lifeline alarm. Now, with his alarm, Mr. H and his daughter have peace of mind knowing that he can simply press a button in case he needs assistance, or the fall detector will alert our Alarm Receiving Centre in Surrey should he ever have a fall. Our friendly call operators will then call an emergency contact or ambulance service if necessary, getting Mr. H the help he needs.



With the aid of daily carer visits and an alarm system, Mr. H now lives independently and feels more confident while being home alone. He believes that this service is vital for individuals who live alone, and that it has helped prevent recurring falls.

“ *I am totally reliant on the Lifeline Alarm and don't know what I would do without it.* ”



Quality Standard Framework
Accredited Organisation

Devices can be invaluable in giving users the confidence and independence to continue their daily activities, knowing they can call for help should they need it.

These devices can be there to help a whole range of people - from the vulnerable, those living or working alone, living with various health needs, or wanting additional measures for instance joggers or children walking to and from school.

GET IN TOUCH



You can find more information on the full range of products at;
www.molevalleylife.co.uk/independent

Speak to our trained team members **01372 204500**, SMS Text **07800 000385** or email us at **mvlife@molevalley.gov.uk**

@molevalleylife

@molevalley_life

Mole Valley Life is brought to you by:



MoleValley
District Council

Extra care housing

Extra care is a service offered in Spelthorne for people aged 55+ looking for care in a supported environment, whilst still maintaining their independence. There are 123 extra care units in Spelthorne, across three locations - Beechwood Court and Mitchison Court in Sunbury and Chestnut Court in Stanwell.

Living in Extra Care means you continue to live independently as you do now, but with the peace of mind that there is help on hand. You have your own front door and letterbox and can have your friends and family over to visit.

The units are self-contained one and two-bedroom flats. All have wheelchair access and accessible showers, lifts and an emergency call system in each flat. In Beechwood Court and Chestnut Court, there are restaurant facilities and activities, with Chestnut Court also having a Day Centre on the premises.

Care is provided by onsite carers, with the needs for each resident being individually identified by an Adult Social Care assessment. The type of support includes personal care, medication, meal preparation, cleaning, laundry and shopping. Two of the schemes have night staff and all have a scheme manager. More information about the facilities at each location can be found on the websites listed below:

Mitchison Court, Downside, Sunbury

www.housing21.org.uk/our-properties/search-our-properties/mitchison-court/



Beechwood Court, Churchill Way, Sunbury

<https://a2dominion.co.uk/rent/Retirement-living/Beechwood-Court-Sunbury-on-Thames>



Chestnut Court, Mulberry Avenue, Stanwell

<https://a2dominion.co.uk/rent/Retirement-living/Chestnut-Court-Stanwell>



For more information, contact Spelthorne Council's Housing Options team on **01784 446380**

A great offer for local landlords

Spelthorne Rent Assure is a scheme for landlords who are interested in renting their local property through the Council. The Council guarantees to pay a fair market rate, monthly in advance directly to the landlord themselves, for up to two years. It is a completely free service with no agency fees or commission involved.

Your property can be any size, furnished or unfurnished. We'll inspect

it to ensure it meets the necessary health and safety standards. We then arrange the viewings and conduct right-to-rent and background checks on all tenants. If you are happy with the proposed tenant, we'll provide an inventory check and draw up the agreements.

Ongoing tenancy sustainment support is provided to both parties throughout and tenants also receive training on managing their finances and tenant/landlord responsibilities.



To find out more, visit www.spelthorne.gov.uk/sra, email sra@spelthorne.gov.uk or call **01784 448611**

Help to take that next step



Located near the Bus Station in the Elmsleigh Centre in Staines, Spelthorne Council's Job & Skills Hub is dedicated to finding employment and skills opportunities for local people. Whatever your age, situation, skills or background, drop-in and see us if you need help to take your next step. We are open from 10am – 4pm on weekdays.

Callum's story

When Callum came into the Hub he was shy, quiet, and unsure on the career path he wanted to take. He felt he was being pushed along a career path he wasn't interested in.

We discussed what he enjoyed doing and what support he needed and he decided an apprenticeship in Design would be a good match for him.

He became more confident at communicating and working on his goals, and we worked with him on interview techniques. He applied for a number of opportunities and on his second interview was offered an 18-month apprenticeship in Design.

Sarah's story

Sarah was 48 and working in her dream job for an airline when she was made redundant. She applied for various jobs but either didn't get an interview or, when she did, found the process overwhelming.

We spent the first session understanding Sarah's work history and identifying her transferable skills. In the group support sessions, she built on her confidence and realised that local employers would value her skills and experience.

The team helped her create a strong CV and covering letter and within two weeks she had secured a new job using her customer facing experience.

For more information, drop into the Hub, visit <https://spelthornejobsandskills.com> or call **07770 481773**



*Driveway
Specialists*




Laleham Landscapes
The Complete Garden Service

- Artificial Lawn,
- Construction
- Design
- Decking & Patios
- Driveways
- Fencing
- Maintenance
- Paving & Brickwork
- Resin Bonding
- Tree Surgery
- Turfing - Ground Works & Lawn Care



Revive UR Drive

*The Driveway Refurbishment Experts
Driveways, Patios and Paths Expertly Installed
or Professionally Restored, Cleaned and Sealed*

01784 255 094

07961 523 235



sales@lalehamlandscapes.co.uk
www.lalehamlandscapes.co.uk



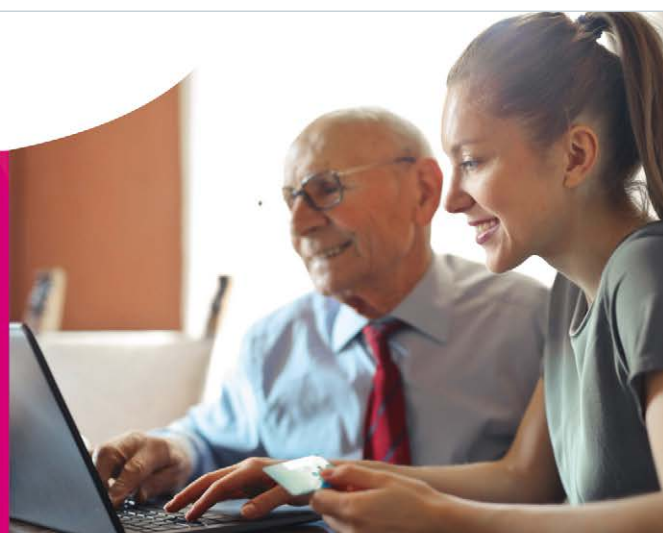

timeless

Your Personal PC Advisor

Unlimited telephone and remote
assistance, 7am - 7pm everyday*

PRIZE DRAW

**Sign Up To Tech: Friend Today
And Enter Our Prize Draw***
*Win a **FREE** CCTV Camera with night
vision and a rechargeable battery.*
(Retail price of £89.99)



FROM JUST £225 A YEAR*

Never feel stuck or frustrated with your computer again

- ✓ We can guide you through any Microsoft or Apple issue
- ✓ We keep you online and connected **securely**
- ✓ Never fall victim to a scam again with our professional advice line
- ✓ We **protect** your device with a business grade, fully managed security software
- ✓ We can **backup** your precious files*

*terms and conditions apply

Sign Up Today
Scan QR Code
OR Email

sales@timelessims.co.uk



0800 328 2852



Chapel House, 21a Woodthorpe
Rd, Ashford TW15 2RP



www.timelessims.co.uk

Amazing meadows

The Council created a new wildflower meadow at Greenfield Recreation Ground in Laleham over the winter which is now beginning to bloom.

A seed mix containing more than 50 species of native meadow grasses and flowers has been sown over an area of almost two hectares. Some flowers like poppies and corncockles will bloom this summer but most are perennials and will begin flowering in 2024.

Once mature, this meadow will provide food and shelter to an array of bees, butterflies and birds. The meadow is already home to many ant hills and a variety of trees which have been retained for their wildlife value. The grass will be left to grow long each summer then cut for hay, which will create space for new flowers in the following year. The existing paths around and through the meadow will be kept short to allow walkers to admire the flowers up close, but we



do ask that people avoid trampling or picking the flowers so they can continue to provide pollen, nectar and seeds for wildlife.

We hope to expand our meadow creation programme to other parks across the Borough.

Spelthorne in Bloom poster competition

More than 100 gardeners and pupils from local primary schools met at Squires Garden Centre in Hallford on 24 April to launch the annual Spelthorne in Bloom campaign and to recognise the winners of the Children's Poster Competition for 2023.

The overall winner was Layla from Our Lady of the Rosary primary school in Staines-upon-Thames whose beautiful Coronation-themed design features on this year's competition entry forms and posters. Layla and the other winners were presented with prizes by the Mayor and Nick Wood-Dow, Chair of the Spelthorne in Bloom Committee.

Category	Winner
Overall winner	Layla, age 10, Our Lady of the Rosary Primary School
SEND poster winner	Caelan, age 5, Manor Mead School
Hand drawn posters, age 4 - 6	Jing Han, age 6, Stanwell Fields C of E School
Hand drawn posters, age 7 - 8	Hannah, age 7, St Michaels Catholic School
Hand drawn posters, age 9 - 11	Layla, age 10, Our Lady of the Rosary Primary School
Computer generated posters	Ella, age 10, St Michaels Catholic School

Colin Squire OBE, Chairman Emeritus of Squire's Garden Centres, welcomed the guests and thanked them for their help in keeping Spelthorne looking beautiful. The Mayor also thanked the sponsors and volunteers on the Spelthorne in Bloom Committee.

Judging is currently taking place for Spelthorne in Bloom and the winners will be announced in October.



For more information about Spelthorne in Bloom, visit www.spelthorne.gov.uk/SIB, email spelthorne.inbloom@spelthorne.gov.uk or call 01784 444288



Mobility Scooters from **£799***

Riser Recliners from **£829***

Stairlifts Installed from **£1,790***

Wheelchairs from **£189***

Clearwell mobility 
Making Life Easier

Staines Showroom
 11-17 Kingston Road
 Staines
 TW18 4QX
01784 440 044
 (opposite police station)
 Mon-Sat 9^{am}-5^{pm}
www.clearwellmobility.co.uk

*Prices quoted exclude VAT and are available to customers with a long term medical condition.

FREE Brochure 

✂ Name _____
 Address _____

 Postcode _____
 Post to: FREEPOST CLEARWELL MOBILITY

xpert

PLUMBING & HEATING

Leaks & Bursts, Boiler breakdowns, servicing & installs. Toilets & taps.
 Radiators & pumps. Tanks & overflows. Baths & showers.

- ✓ Free estimates
- ✓ Fixed upfront prices
- ✓ Senior citizen discounts
- ✓ Work guaranteed
- ✓ Fully insured
- ✓ No call out charge

Call Stuart on 01784 279262

Covering: Staines, Shepperton, Ashford, Sunbury, Wraysbury, Laleham, Egham & Stanwell.



Welcome to the new Borough Commander



I am Inspector Matt Walton and I would like to take this opportunity to introduce myself as your new Borough Commander for Spelthorne.

I have taken over from Maxine Cilia who has moved on following her promotion. I have been a Constable with Surrey Police for 21 years, starting on Response in Guildford for the first six years of my career. I then spent seven years investigating organised crime across the Force, with the remainder of that time in West Surrey in a variety of roles. Prior to becoming your Borough Commander, I worked in the same role in Surrey Heath for eight months, helping reduce both anti-social behaviour and violent incidents in the town centre, increasing public confidence to 90% at one point. I look

forward to working with you to ensure the Borough is a safe place to live and work.

My current priorities are:

- reducing drug dealing and violence in the Borough with a current focus on Staines town centre and Stanwell
- targeting those who commit serious acquisitive crime with a current focus on thefts of high value tools from vans
- improving our community engagement and creating more opportunities for residents to speak with my team and share their concerns, either face-to-face or online
- working with our partners in the community to reduce anti-social behaviour

Matt Walton
Borough Commander,
Surrey Police



Service changes

Surrey County Council is now responsible for on-street parking and the maintenance of highway verges.

To contact Surrey County Council, visit www.surreycc.gov.uk or call 03456 009 009

Shopping in Staines?

Choose the Elmsleigh car parks for the cheapest parking

Elmsleigh multi-storey car park and Elmsleigh surface car park

Monday - Saturday:

Up to 1 hour	£1
Up to 2 hour	£2
Up to 3 hour	£3
Up to 4 hour	£4
Up to 5 hour	£7

Sunday:

all day	£2
---------	----



Elmsleigh
Shopping Centre

SPELTHORNE
BOROUGH COUNCIL



Have you paid for your parking?

Our parking enforcement officers will be making regular patrols of our car parks this summer. Please ensure you have parked legally, safely, and paid for your session. If you have parked in a disabled bay, you must display your blue badge.

For more information about Spelthorne Borough Council's car parks, visit www.spelthorne.gov.uk/carparks or call 01784 444255



Community Centres

Our Community Centres provide a wide range of activities including yoga, pilates, quizzes, art, bridge, computer classes, singing, bingo, dancing, book club and language classes. Some also offer hairdressing, chiropody and beautician services. They are great places to have a bite to eat, meet new people or try some activities. For information about opening hours, costs and your nearest centre, visit www.spelthorne.gov.uk/communitycentres, email independentliving@spelthorne.gov.uk or call 01784 446389.

Our Fordbridge and Greeno Centres have extended their regular opening days to include alternate Saturdays until the end of September 2023. Members of the Community Centres and non-members over 50 are welcome. Please call the Centre to book a place for lunch by the Wednesday before:

Date	Venue
8 July 2023	Greeno Centre, Shepperton
15 July 2023	Fordbridge Centre, Ashford
22 July 2023	Greeno Centre, Shepperton
29 July 2023	Fordbridge Centre, Ashford
5 August 2023	Greeno Centre, Shepperton
12 August 2023	Fordbridge Centre, Ashford
19 August 2023	Greeno Centre, Shepperton
26 August 2023	Fordbridge Centre, Ashford
2 September 2023	Greeno Centre, Shepperton
9 September 2023	Fordbridge Centre, Ashford
16 September 2023	Greeno Centre, Shepperton
23 September 2023	Fordbridge Centre, Ashford
30 September 2023	Greeno Centre, Shepperton

Fordbridge Community Centre

Clarendon Road, Ashford, TW15 2PU
☎ 01784 243880
✉ fordbridgecentre@spelthorne.gov.uk

Greeno Community Centre

Glebeland Gardens, Shepperton, TW17 9DH
☎ 01932 246173
✉ greenocentre@spelthorne.gov.uk



Disabled Facilities Grant

Disabled Facilities Grant Disabled Facilities Grants are available to help fund the cost of aids and adaptations to enable disabled people to live independently in their own home. The type of adaptations which can be funded include:

- stair lifts
- installing ramps
- widening doors
- level access showers
- providing or improving access to rooms

For more information, visit www.spelthorne.gov.uk/DFG, email dfg@spelthorne.gov.uk or call 01784 448607



If you are caring for someone with a condition such as dementia, sight loss or immobility, you may be interested to know that two of the Council's Community Centres run groups for people with support needs. Our aim is to offer social interaction and stimulating activities, while you get some time to yourself knowing that your loved one is being well looked after.

Daily OPAL groups run from 9.30am - 3.30pm at the Fordbridge Centre in Ashford and the Greeno Centre in Shepperton. There is a daily charge of £40 to attend the group which can be paid privately or as part of a social care package if eligible.

For more information, email opal@spelthorne.gov.uk or call 01784 446389

Visit www.spelthorne.gov.uk/communitycentres or call 01784 446389 for more details

Meals on Wheels

We spoke to Patti Rogers who works as part of Spelthorne Council's Meals on Wheels team to find out who can use the service and how it works.

Who can order Meals on Wheels?

People of all ages who find it difficult to prepare a daily meal or shop can benefit from Meals on Wheels.

What are the meals like?

Examples of some of our meals are chicken in gravy, steak and kidney pie, beef stew and dumplings, chicken curry, chicken and mushroom pie and traditionally we do fish on a Friday!

Is the food nutritious?

Yes, the meals have been developed by our supplier to be nutritionally balanced.

Do you have options for dietary or religious needs?

We can provide options such as gluten free, pescatarian, vegan, allergen free, kosher, Caribbean and West Indian meals. Sugar-free puddings can also be provided for people with diabetes, which taste just as yummy I'm told!

Can I order meals for a short period of time while I recover from an operation?

Yes, meals can be provided on a long-term basis or just for a short while.

When are the meals delivered?

We have a lunchtime service, or an evening delivery for clients who prefer to eat later, subject to spaces.

What are the team like?

The admin team consists of myself and my colleagues in the council offices at Knowle Green and we have a team of friendly drivers based at the Fordbridge Centre in Ashford. We are also lucky to have many supportive volunteers.



The Meals on Wheels team (from left to right): Patti Rogers, Phil Riddlestone, Jeff Benjamin and Lynda Stafford.

Is there a charge?

The current charge for a hot meal and pudding is £4. A freshly made sandwich can also be delivered on weekdays with the hot meal to eat later for tea, or the next day, which costs £1.80.

Can I order meals for specific days if I don't need them every day?

Yes, your meals can be ordered for specific days during the week, with the option to add or cancel meals if you let us know in advance. For people in certain circumstances, we can also deliver hot meals on weekends and bank holidays.

Do you only offer hot meals?

We also have a frozen meal service - you can order up to seven frozen meals which are delivered in one go for you to heat yourself at home.

How quickly can I start receiving deliveries?

Our turnaround is very quick and new orders which are received before lunchtime can usually start the next working day, subject to dietary requirements, or you can choose a future start date if you're not quite ready yet.

How do I sign-up?

If you would like to find out more you can call us on **01784 444265**, email **mealsonwheels@spelthorne.gov.uk** or visit **www.spelthorne.gov.uk/MOW**

FIND OUT WHAT YOUR HOME IN SPELTHORNE IS WORTH INSTANTLY!



Use Our FREE Instant Online Valuation Tool

If you're thinking of moving, start by getting a Hometrack Valuation Report to see how much your home is worth

Hometrack is the UK's largest automated valuer of residential properties and is relied upon by 13 of the 15 top UK high street lenders

Zoe Foxman &
Oscar Syms



Scan Me!



Get your FREE online valuation report
now at: TWValue2020.co.uk call: (24/7)
01784 770 628

TWValue2020.co.uk