

7 Capture Spelthorne
2021 Winners

11 Celebrating The
Queen's Platinum Jubilee

12-13 Spelthorne
Youth Hub



EVERYONE

AWARD-WINNING SWIM LESSONS FROM THE UK'S LEADING PROVIDER

- Spaces always available
- Learn from four months old
- Available up to seven days a week
- All teachers are Swim England or equivalent qualified
- Pay monthly by Direct Debit

Enrol today at everyoneactive.com/swim-lessons

Sunbury Leisure Centre
Nursery Road
Sunbury-on-Thames
Middlesex TW16 6LG
01932 772287

Spelthorne Leisure Centre
Knowle Green
Staines
Middlesex TW18 1AJ
01784 493493



**everyone
ACTIVE**

Everyone Active manages these facilities in partnership with Spelthorne Borough Council

*T&Cs: www.everyoneactive.com/legal-policies/terms-and-conditions/

Letter from the Leader



Dear Residents, I hope you are keeping well and are now able to feel more confident about the future. In this edition of the Bulletin, we have a feature about the Spelthorne Youth Hub, a new service to help young people aged 16 – 24 into work, training or education. The kind of support on offer includes mentoring, help with CV writing, volunteering opportunities, work placements and funding for training. The pandemic has had a huge effect on young people's confidence, but the Youth Hub can help them move forward. You can read more about this on pages 12 and 13.

We are providing an unprecedented level of support for businesses in the Borough via grants and other initiatives, including a Business Hub for small businesses and start-ups. The annual Spelthorne Business Plan Competition, which we run in partnership with Kwasi Kwarteng MP, opens for entries on 18 March, so if you have a great idea for a new business, there is the chance to win £3,500 to help get it started. The full details are on page 9.

Spelthorne has many beautiful parks and open spaces and on page 17 there is an article about Dumsey Meadow in Chertsey, a Site of Special Scientific Interest and home to a rich array of plants, birds and wildlife. Located next to the Thames, it's a pretty place to visit on a sunny spring day if you are looking for a new place to walk.

As a nation we will be celebrating the Queen's Platinum Jubilee in June and on page 11 we have news about what is being planned, and how you can organise your own street party. This information is being regularly updated so check our website and social media for the latest updates.

Cllr Lawrence Nichols, Leader of the Council

cllr.nichols@spelthorne.gov.uk

Are you registered to vote?

The Electoral Register was published on 1 December 2021, following a canvass of households in Spelthorne. This register will remain in force until 30 November 2022 and whilst we do not have any elections scheduled this year, it will be used for snap elections.

If you are not registered or have recently moved house, you can apply online at www.gov.uk/register-to-vote.

vote. If your application is successful, we will write to confirm or ask for further information if required.

The Electoral Register is also used by credit reference agencies to check where people live when they apply for any form of credit such as a mortgage, loan or hire purchase agreement. Residents who are not on the Electoral Register may find it more difficult to obtain credit.



For more information, visit www.spelthorne.gov.uk/elections, email electoral.services@spelthorne.gov.uk or call 01784 444218

Stay up-to-date with MyAlerts

Sign up to MyAlerts to receive regular emails from Spelthorne Council about rubbish and recycling collections, planning applications, local events, council services, consultations, news stories and vacancies.

Visit www.spelthorne.gov.uk/myalerts



Contents

Community

Message from the Mayor	5
Shepperton Studios launches community fund	20

Economic Development

Business Plan Competition	9
Supporting local business	9

Leisure and Wellbeing

Community Centres	6
Surrey Youth Games	10
Cultural Strategy for Spelthorne	10

News

The Queen's Platinum Jubilee	11
Spelthorne Youth Hub	12-13
Steps to solve the housing crisis	19

Environment

Dumsey Meadow	17
Spelthorne in Bloom	15
Recycling contaminants	23

Contacts us:

- www.spelthorne.gov.uk
- 01784 451499
- Spelthorne Borough Council, Council Offices, Knowle Green, Staines-upon-Thames, TW18 1XB

Follow us on social media:

- @spelthornebc
- @spelthornebc
- @spelthorneboroughcouncil
- Spelthorne Borough Council

Sign up to our monthly newsletter:
www.spelthorne.gov.uk/enews

Sign up to the 'My Alerts' service:
www.spelthorne.gov.uk/myalerts

Bulletin enquiries: 01784 446297 / 01784 444260
Editors: Jennifer Medcraft / Louise King
Design: Tanya Allen
Cover: Photo by Lisa O'Sullivan, winner of Capture Spelthorne 2021 competition

Advertising enquiries: Send an email to frontlinedesigners.co.uk or call 01342 312570.

Spelthorne Borough Council does not accept responsibility for, or endorse, any products or services offered by advertisers.

The Bulletin is available in large print and on CD. Please email I.king@spelthorne.gov.uk or call 01784 444260.

The Bulletin is our community magazine produced by Spelthorne Borough Council, delivered free to every home in Spelthorne. Circulation 46,000.

Printed on recycled paper.

WHY STAGECOACH?

At Stagecoach Performing Arts, we give our students the **creative courage** to embrace life and make the most of their talents and opportunities.

- 30 years' experience in performing arts teaching
- Over 600 schools worldwide
- 1 million children supported to reach their potential
- Regular national events at iconic theatres
- Over 22,000 casting opportunities via our talent agency
- A unique educational framework

Your child will learn how to

SING, DANCE & ACT

while developing a broad range of life skills.

STAGECOACH STAINES

W www.stagecoach.co.uk/staines

07802800633 E staines@stagecoach.co.uk

Classes are held at Thomas Knyvett College, Stanwell Rd, Ashford TW15 3DU on a Friday after school and Saturday's.

Now accepting childcare vouchers

STAGE
COACH

Creative Courage For Life®

BOOK NOW WORKSHOP

4th-8th April &
25th-29th July 2022
10-4pm

cantellotayler
recruitment

New You, New Job?



Cantello Tayler Recruitment provide permanent, temporary and contract candidates to a wide range of industries and sectors.

Scan the QR code for a list of our current vacancies or call us today to discuss how we can help you find your new job.

01753 428 000
www.cantellotayler.com



100

Halliford
School
1921 - 2021

Independent Senior Day School

Boys 11-18 years Girls 16-18 years

Open Events 2022

Sixth Form Open Evening

Wednesday 4th May 6.00pm-8.00pm

Visitor Morning

Thursday 12th May 9.00am and 11.00am

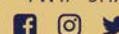
Book now at: www.hallifordschool.co.uk



At Halliford your child will be known and respected as an individual and encouraged, supported and inspired to become the best version of themselves that they can possibly be.

- Extensive coach service covering the surrounding area
- Short walk from Shepperton Station
- Shuttle service from Walton and Staines Stations

Halliford School • Russell Road • Shepperton • TW17 9HX
registrar@hallifordschool.co.uk 01932 223593



Message from the Mayor

Being Mayor is a huge honour and privilege and it has been a great pleasure for the Mayoress and I to travel around the Borough to meet many residents and represent Spelthorne, including recently attending a service at Guildford Cathedral on the 70th anniversary of Her Majesty's Assession.

In October we visited Melun in France; one of our twin towns to celebrate the 30th anniversary of our connection. We were joined by representatives from their German and Italian twin towns.



It was a highlight of my mayoral year to open the White House single homeless facility, and Harper House family emergency accommodation – both of which are already having a profound impact on the lives of our residents.



Both these outstanding community provisions are the tangible results of my time as Leader of the Council and fruits of the investment strategy that we embarked on six years ago.

The Mayoress was particularly impressed with the huge "Tunnel to Towers" fund-raising effort of our firefighters on the 20th anniversary of 9/11, on what was a rather hot and sweaty day!



We have all been impacted by the pandemic, some more than others, and are thankful that life is starting to return to normal. The consequences for our young people; who are my mayoral focus, are still emerging and we need to be there for them, particularly for those feeling hopeless during this time.

We are now looking forward to a flurry of events this spring to round off my year on a high, and raise more funds for my charities east to west, and Ashford Youth Club; both of whom offer invaluable support for vulnerable young people. I invite you to come and enjoy yourselves and support these events, which are open to all!

And finally on a personal note, as this Bulletin is being delivered, the Mayoress and I are celebrating our 30th wedding anniversary.

Thank you for your support and wishing you a happy and safe rest of the year.

Ian and Helen



Contact the Mayor's office by email mayor@spelthorne.gov.uk or call **01784 446275**

*Mayor's
Spring Blossom Charity Ball*

Save the date

Friday 29 April from 6.15pm - 1am
The newly refurbished Holiday Inn, Shepperton

£75 each or £700 for a table of 10.
Drinks reception, three-course dinner and live band.
Special offer of £85 for overnight stay
for 2 incl. breakfast.

All proceeds raised will go to the Mayor's chosen charities.

For further details, visit www.spelthorne.gov.uk/MayorEvents

Corporate table sponsorship packages available.
Prizes, donations and any support gratefully received.
Please contact the Mayor's Office.

Mayor's events

You are invited to join the Mayor for the following charity events:

Thursday 17 March:

Mayor's civic business reception

Friday 18 March:

Sunbury Cricket Club's live music concert

Saturday 9 April:

Brass Band Concert, St Hilda's Church, Ashford

Friday 29 April:

Mayor's Spring Blossom Ball at Holiday Inn, Shepperton

Friday 13 May:

Ladies Fizz and Film Afternoon
Korda Theatre, Shepperton Studios

For more details or to buy tickets, visit
www.spelthorne.gov.uk/MayorEvents



Join our Community Centres

We have four Community Centres in Spelthorne which provide a warm and welcoming environment for older people and the wider community. The centres offer a range of opportunities to meet people, take part in activities and keep fit. They also serve food and snacks and organise regular trips and outings. For membership fees and centre charges, please contact your nearest centre.

Staines Community Centre

Thames Street, TW18 4EA

☎ 01784 463073

✉ stainescommunitycentre@spelthorne.gov.uk



Greeno Community Centre

Glebeland Gardens, Shepperton, TW17 9DH

☎ 01932 246173

✉ greenocentre@spelthorne.gov.uk



Fordbridge Community Centre

Clarendon Road, Ashford, TW15 2PU

☎ 01784 243880

✉ fordbridgecentre@spelthorne.gov.uk



Benwell Community Centre

Downside, Sunbury-on-Thames, TW16 6RT

☎ 01932 784232

✉ benwellcentre@spelthorne.gov.uk



Need extra support?

We run two OPAL groups for older people who would benefit from visiting our Community Centres but have conditions such as dementia, sight loss or immobility which mean they need additional support. Our aim is to offer social interaction, stimulating activities and a hot nutritious meal during the day, with any help being provided by our support workers.

We run daily OPAL groups from 9.30am - 3.30pm at the Fordbridge Centre in Ashford and the Greeno Centre in Shepperton. There is a daily charge of £40 to attend the group which can be paid privately or as part of a social care package. A hot lunch and pudding are provided for £4 and transport can be arranged on our OPAL mini buses (£7.25 return journey / £4.20 one way).

For more information, contact the Fordbridge Centre in Ashford or Greeno Centre in Shepperton.



Visit www.spelthorne.gov.uk/communitycentres or call 01784 446389 for more details



Meals on Wheels

The Spelthorne Meals on Wheels team can deliver hot, tasty and nutritious meals up to seven days a week. The cost of a main meal and pudding is £4 and for a small extra charge you can also order a freshly made sandwich or a frozen meal to heat later.

As well as the convenience of having food prepared for you, many residents like the reassurance of knowing someone will call on them each day. Meals on Wheels are available to residents of all ages who find it difficult to prepare a daily meal, and they can be ordered for short periods of time.

Contact the Meals on Wheels team by email at m.wheels@spelthorne.gov.uk or call 01784 444265. Visit www.spelthorne.gov.uk/MOW

Personal alarms

Managed by Spelthorne Council, SPAN is a personal alarm system which helps people to live independently in their own homes.

With the touch of a button worn around your wrist or neck, you can contact the 24-hour care centre who will arrange help from family, friends or the emergency services at any time of day or night. Charges start from £4.30 per week.

Contact the SPAN team by email at span@spelthorne.gov.uk or call 01784 444277. Visit www.spelthorne.gov.uk/span



Capture Spelthorne 2021 competition winners

In the last edition of the Bulletin, we published the photographs of the 2021 Capture Spelthorne finalists and are pleased to announce that the following photographers were selected as winners of their categories:



Lisa O'Sullivan, overall winner and winner of Nature in Spelthorne



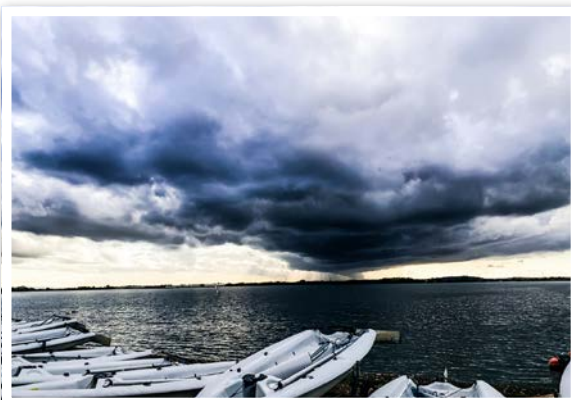
Freddie Whittaker, Under 16s



Barry Dix, Sporting Spelthorne



Mike Bodnar, Community in Spelthorne



Tanya Snook, Additional Category



Mike Bodnar, Business in Action

Many congratulations to Lisa O'Sullivan who was chosen as the overall winner of Capture Spelthorne 2021 for her beautiful image 'Stunning Swans at Sunset'. Lisa received a trophy, £100 and her photograph is featured on the cover of this edition of the Bulletin.

Each category winner received a £50 cheque, a framed picture of their winning photo and tickets for Pinewood Cinema.



We love seeing your photographs all year round. Share them with us on Instagram
@spelthorneboroughcouncil

HELP AT HOME

“ It is like having
a friend
come round
to help ”



Our Home Helps take pride in building relationships with the clients to ensure they feel safe and happy.

Start as a client but end as a friend.

Help at Home is your doorway into a world of advice and information for people aged 50+.

At Age UK Surrey we provide various services and activities all geared to making older people get the most out of later life. Our Social Activities will reopen in the summer, check our website for more information.

HOUSEWORK

SHOPPING

COMPANIONSHIP

AND MUCH MORE

All our home helps are comprehensively briefed, have access to PPE, maintain social distancing and are security checked.



01483 503414

enquiries@ageuksurrey.org.uk
www.ageuk.org.uk/surrey

Charity No: 1036450

1SB0222

SAS
Accountants Ltd

Short and Sons Accountants Ltd

T: 01784 390021

M: 07481 479933

www.shortandsons.co.uk

sales@shortandsons.co.uk



For Small Business, Self-Employment & Landlords

Over 50
x 5 Star reviews
on Google



01784 390021 T or 07481 479933 M

Email: sales@shortandsons.co.uk

WhatsApp: 07481 479933

www.shortandsons.co.uk

Easy Switching Process, call today!

STAINES BOWLING CLUB

TIME TO TRY
SOME EXERCISE?

WE HAVE OPEN
DAYS ON -

FRIDAY 13TH MAY
5PM - TILL LATE.

SATURDAY 14TH MAY
10AM - 12PM.

SUNDAY 22ND MAY
2PM-4PM

JUST TURN UP.

AN EQUALITY SPORT
OPEN TO EVERYONE.

REDUCED 1ST YEAR MEMBERSHIP
- FOR NEW BOWLERS.

FREE COACHING SESSIONS.

PLEASE PHONE FOR DETAILS:-

MIKE ON 07546 224337 OR

JOYCE ON 01784 456406.

OR - JUST COME IN AND ASK.

Please bring
flat soled
shoes.



LICENSED
BAR AND
SOCIAL
EVENINGS

BURGES WAY
STAINES, TW18 1AJ
BEHIND STAINES HEALTH CENTRE

SEASON STARTS ON APRIL 26TH

SEE OUR WEB SITE: WWW.STAINESBOWLINGCLUB.CO.UK

The Spelthorne Business Plan Competition 2022



Are you a budding entrepreneur who dreams of starting their own business?

Kwasi Kwarteng MP is hosting the 8th Spelthorne Business Plan Competition in partnership with Spelthorne Borough Council. If you have a great business idea but need some help to get things off the ground, this is an opportunity to give your idea the boost it needs, with a prize of £3,500.

The six best entries will be asked to present their business idea to a panel of expert judges at a Dragons' Den style final hosted at BP in Sunbury on 14 July. Each of the finalists will be given support to perfect their pitch.

Entries are welcome from individuals or teams of up to four people. To enter visit www.spelthorne.gov.uk/businesscomp or search @Spelthorne Business Plan Competition on Facebook. The competition is open to Spelthorne residents aged 16 and over.

The competition opens for entries on 18 March and applications need to be submitted by 19 May 2022.



2021 winner: Shannon McBride, Magic Elephant Ltd

For more information or help with the application process, email karen.porter@parliament.uk

Apprenticeship training

The Apprenticeship and Skills Hub has launched Transfer to Transform, a campaign to encourage large businesses across the region to pledge their unspent apprenticeship levy funds to support the region's small and medium size businesses.



For more information or to apply, contact Apprenticeship and Skills Hub adviser, Carol Greaves, by email at carol.greaves@hants.gov.uk or call 07824 014642



Supporting local business

Spelthorne Council has launched two new initiatives aimed at helping local businesses grow and overcome challenges.

One-to-one business coaching

Delivered by Pro-Actions, we are offering one-to-one coaching to help businesses survive and thrive, with advice on a range of topics including overcoming challenges and developing a strategy to grow. It is suitable for well-established companies or people thinking about starting a business.

Digital media training

Delivered by Clockwork City, our digital media training is aimed at helping business owners with practical advice and support on how to improve their digital business skills and online presence.

For more information, visit www.sbf.biz/spelthorne council launch new support initiatives for spelthorne businesses or email the Council's Economic Development team at e.development@spelthorne.gov.uk

Join a community of freelancers and entrepreneurs

Spelthorne Council opened its Business Hub in Sunbury in partnership with Co Tribe in September 2021 - the perfect base for any small business that is looking for a flexible and affordable workspace with all the facilities a small business needs.

It's a creative co-working space with a vibrant and friendly atmosphere that can't be replicated at home. All types of businesses are welcome, and an accountancy firm and estate agency recently joined the community.

The Hub is also a versatile location for the community and is used as a base for training and events, including social media training and surgery appointments with Kwasi Kwarteng MP. It is also the location for the Youth Hub two days a week, where young people are supported to find work or training opportunities.

There are several options available including hotdesking, permanent desks and individual offices, with prices starting from £99 a month.



To book a look around the Hub, visit cotribe.com/sunbury or email e.development@spelthorne.gov.uk

Become a supplier to the Council

To support local businesses, Spelthorne Council now has a policy to purchase items and services costing less than £5,000 from companies based in the Borough if they represent good value for money.

To make sure we know about your business, visit the Spelthorne Business Forum website and register on the Business Directory.



Visit www.sbf.biz/directory

Specsavers Surrey Youth Games



Are you aged 6-16 and interested in giving a new activity a try? Then why not register for Spelthorne's upcoming free beginner taster-session programme, as part of the Borough's preparations for the annual Specsavers Surrey Youth Games.

Perhaps not surprisingly, there has been a decline in the activity levels of children during the Coronavirus pandemic, so we will be using the Games as a new opportunity to encourage young people to be more physically active.

Aimed at beginners, the weekly taster-sessions will start in April and run for up to seven weeks. All participants will have the opportunity to attend the Surrey Youth Games celebratory festival in Guildford on Saturday 18 June, together with their new friends! There are a wide variety of activities on offer including girls' football, Go Tri (jog, cycle, row), swimming, dance, street

basketball and tennis. Sessions are open to young residents who live or go to school in Spelthorne and will be located across the Borough, particularly in our less advantaged areas.



To register and for full details on the taster sessions including age groups, visit www.spelthorne.gov.uk/surreyyouthgames

Xplorer - family orienteering

Xplorer is the perfect outdoor activity for families, offering a friendly navigation challenge that is educational and fun. The aim is to find markers located around the park using a map.

Events will be taking place on the following dates and locations:

5 April: Long Lane Recreation Ground, Stanwell, TW19 7ER

14 April: Orchard Meadow, Sunbury-on-Thames, TW16 6AB

The events are free and take place between 10.30am-12.30pm.

For more information, visit www.xplorer.org.uk or contact Leisure Services on **01784 446433** or email leisure@spelthorne.gov.uk

Learn to swim

Spelthorne Leisure Centre provides award-winning swimming lessons that allow the children to view their own progress and move through the stages as quickly and effectively as possible. Our Aqua Passport also allows the students to learn interactively and play games to make learning fun.

**everyone
ACTIVE**

Visit joinonline.everyoneactive.com/lessons or call **01784 493493**

Cultural Strategy for Spelthorne

The Arts help people to grow, develop new skills and build confidence. They bring people together, forging friendships, strengthening communities, and re-enforcing our sense of place. As we recover from the pandemic, this is more important now than ever.

Making the most of the transformative power of the Arts, Spelthorne Borough Council is producing a new Cultural Strategy for Spelthorne for 2022 - 2027.

As part of this process, our Leisure and Community Development team will co-ordinate a series of events and activities to develop relationships between the cultural sector, businesses, artists, hobbyists, and anyone who has an interest in cultural activity.

To keep up to date with opportunities and get involved, visit www.spelthorne.gov.uk/culturalstrategy. You can also join the Spelthorne Arts mailing list by emailing c.learmonth@spelthorne.gov.uk

Get social in Spelthorne

Our Spelthorne Leisure Directory is the best way to find out about the clubs, social groups and sporting activities on offer in Spelthorne.

From badminton to bridge, railways to rowing and horticulture to history, there's something to suit all ages and interests.

Would you like to advertise your club, activity or group for free in our Spelthorne Leisure Directory? Visit our website and complete the online form.



View the Leisure Directory on our website at www.spelthorne.gov.uk/leisuredirectory



Celebrating the Queen's Platinum Jubilee

2022 is the Queen's Platinum Jubilee year, marking 70 years of service to the people of the United Kingdom, the Realms and the Commonwealth. There will be lots of things going on in Spelthorne and we'll try to round up what events are going on throughout the year.

Dates for your diary

There will be a four-day Bank Holiday weekend from Thursday 2 June to Sunday 5 June.

Street parties and events

If you're thinking of organising a street party or an event, you will need to apply by 22 April. If you are applying for a road closure, please allow 6-12 weeks before your event. Visit www.spelthorne.gov.uk/streetparty for all the guidance and advice you need.

The Big Jubilee Lunch

The Big Lunch is an idea from the

Eden Project to bring people together to meet, chat and have fun in their neighbourhoods. It's about sharing food and fun during the Jubilee bank holiday weekend and throughout the month of June. Great things happen when we all get together! For tips and ideas on hosting your own Big Lunch event visit www.edenprojectcommunities.com/the-big-jubilee-lunch. We'll be organising some community Big Lunches too and will let you know details soon.

The Queen's Green Canopy

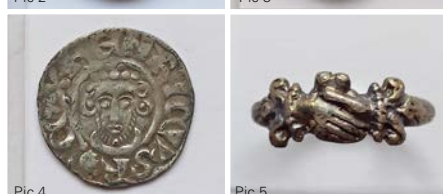
The Queen's Green Canopy is a unique tree planting initiative inviting people from across the United Kingdom to 'Plant a Tree for the Jubilee'. In Spelthorne we have already planted a Jubilee tree in every town in the Borough to mark the occasion and these will be unveiled soon! Visit www.queensgreencanopy.org



The Queen's Platinum Jubilee Beacons

Thousands of beacons will be lit by communities, charities and community groups throughout the UK, Channel Islands, Isle of Man, British Overseas Territories and the capitals of the Commonwealth. The Principal Beacon will be lit on 2 June. We will keep you posted on where the beacons will be in Surrey.

Visit www.spelthorne.gov.uk/jubilee for the latest information about events and celebrations for the Queen's Platinum Jubilee in Spelthorne.



Roman artifacts found on Leisure Centre site

Coins dating from the Roman and Saxon eras have been found on the site of Spelthorne's new Leisure Centre in Knowle Green, as well as artifacts from up to 6,000 years ago.

Between October and December 2021, Foundations Archaeology undertook an excavation of the site that will be used for Spelthorne's new Leisure Centre, on behalf of the Council. This revealed the site dates back to the Neolithic period (4000 – 2500BC). Three pits containing large amounts of worked flint were found, one of which contained a polished stone axe.

Next to the Neolithic pits were two well-preserved Bronze Age barrow

ring-ditches (pic 1), which are thought to be funeral monuments from between 2500 and 700BC. In addition to the Bronze Age features, a series of Roman pits, likely used for refuse disposal, were found across the area.

Archaeologists also found 60 Roman bronze coins, a gold Stater coin from the Iron Age (20BC to AD10 – pic 2), a silver Saxon Scaet coin (pic 3), a Henry III silver short-cross penny (pic 4) and a 16th century silver finger ring (pic 5).

It is hoped the artifacts will be given to Spelthorne Museum so residents will be able to see them very soon.

Spelthorne Youth

Skills and opportunities for age

Working with local business partners, Spelthorne Council launched the Youth Hub in December 2021, aimed at supporting young people aged 16 - 24 to access work, training and education.

The impact of the pandemic on young people

According to a survey carried out for the Princes Trust in November 2021, young people all over the UK are experiencing a crippling loss of confidence in their skills for work and future prospects.

Of the young people surveyed, more than half reported that they have lost confidence in themselves because of the pandemic. Only a fifth say they feel confident in their future career and just one in five feel like they have the confidence to go after the job they want. A quarter of young people worry they do not have the skills for the jobs that are available to them, and almost half agree that over the course of the pandemic, they have even lost confidence in their ability to do the job they are trained to do.

With these issues in mind, the Youth Hub was created to raise young people's confidence, aspirations and employability.

Spelthorne Youth Hub - all you need to plan your future

The Youth Hub works as a partnership between Spelthorne Council, the Department of Work and Pensions, A2 Dominion Housing and local businesses to ensure young people get the best possible support by offering:

- one-to-one coaching from experienced staff
- support from business mentors
- opportunities for work experience and work tasters
- volunteer opportunities
- CV writing
- support to raise confidence and self-belief
- employment matching services
- exploring career opportunities
- funding for training



For more details or to sign up, visit www.spelthorneyouthhub.com, email info@spelthorneyouthhub.com or call 07770 481773

Hub s 16-24



Finding the right path

Danielle left college with good grades but wasn't sure what to do next. Although she had gained a place at Art College, she didn't feel ready to take it up and, due to the lockdown, began to feel isolated and unmotivated.

Her mother contacted the Youth Hub and we spoke to Danielle about the type of support we could offer.

Over the next 8 weeks Danielle completed her CV outlining her skills - many of which she didn't even realise she had. This process also began to unpick the issues that were worrying her.

She then signed onto the 'I Choose Local' app to look for paid work and work experience. From this, she attended a two-week work placement in an Art and Design environment to see if this is where she wanted to focus her career. To increase her confidence, she also helped design the gallery showing young people's work at her local Youth Club.

With this experience behind her, she was able to find an apprenticeship utilising her skills and interests, while at the same time building her confidence. Danielle said: "The Youth Hub has given me lots of support and opportunities to try different things to help me decide which direction I should go in. As well as the practical help, I think it has also improved my social skills and given me more confidence around larger groups of people."

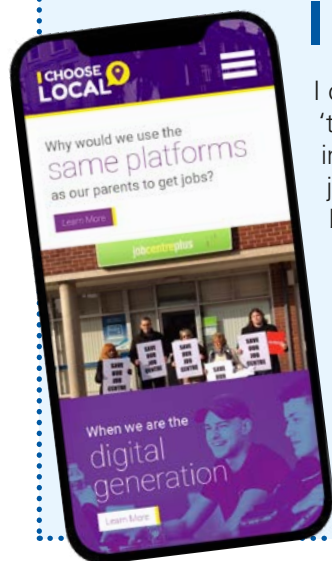
I Choose Local

I choose Local is described as 'the Instagram for jobs' with instant phone notifications when job vacancies or apprenticeships become available. It offers a user-friendly solution to job searching which matches the way young people use technology.

Sign in via the Youth Hub or contact **gary.hudson@ichooselocal.co.uk** for more information.

How businesses can get involved

- commit to advertise vacancies through the I Choose Local app - matching local people with the right skills for their needs
- take on a work experience placement, providing young people with experience of the workplace, while also casting an eye over potential future recruits!
- become a business mentor, supporting a young person to take their first steps into employment



Department
for Work &
Pensions





STAINES PREPARATORY SCHOOL
Educating today's children for the challenges of tomorrow



Join us for our **Open Days**

March

Thursday 17th | 5 to 7pm

Saturday 19th | 10am to 12 noon

May

Thursday 19th | 5 to 7pm

Saturday 21st | 10am to 12 noon

📍 Staines Preparatory School, 3 Gresham Road, Staines-Up-on-Thames, TW18 2BT



🌐 www.stainesprep.co.uk ✉ admissions@stainesprep.co.uk

Clearwell
mobility

Your Local Mobility Experts

Wheelchairs



from £159.99^{ex VAT}

Mobility Scooters



from £649^{ex VAT}

Wheeled Walkers



from £69.99^{ex VAT}

Riser Recliners



from £499^{ex VAT}

Stairlifts



Stannah
AUTHORISED DEALER

from £1,690^{ex VAT}

Staines Showroom

11-17 Kingston Road
Staines
TW18 4QX

01784 44 00 44

Mon-Sat 9^{am} 5^{pm}



FREE 2022 Brochure

TWMAG

NEW!



✂ Name _____

Address _____

Postcode _____

Post to: FREEPOST CLEARWELL MOBILITY

Shop online - www.clearwellmobility.co.uk

Tree Preservation Orders

Spelthorne Council recently prosecuted a Sunbury resident who breached a Tree Preservation Order by damaging the roots of a Horse Chestnut tree in the Avenue in Sunbury-on-Thames. The resident was ordered by the Court to pay a £100 fine, a £34 surcharge and £1,522 for the Council's costs.

Tree Preservation Orders are made by councils to protect important trees and woodland. The main effect of an order is to prohibit the cutting down, uprooting, topping, lopping, wilful damage or wilful destruction of trees. This means that the Council's permission is needed to carry out any pruning, felling or works that may disturb the roots of a protected tree. There are around 265 Tree Preservation Orders throughout Spelthorne.



For more information about Tree Preservation Orders, visit www.spelthorne.gov.uk/TPO, email PlanningDM@spelthorne.gov.uk or call 01784 451499



River Thames Scheme update

The River Thames between Egham and Teddington is one of the largest undefended flood plains in Surrey and has historically suffered serious flooding. With climate change making this risk worse, the River Thames Scheme was created to reduce flood risk to communities through Surrey and South West London.

Funding was approved last year and detailed design work is currently underway. The scheme, which involves creating two new river channels alongside the Thames in Runnymede and Spelthorne as well as improving existing structures like weirs, will increase the capacity of the Thames through Surrey and South West London, reducing the risk of flooding. The Spelthorne channel will go from Laleham to Weybridge.

Alongside the channels there will be large areas of green space, new foot and cycle paths, and improved wildlife habitats. The flood channels will also provide opportunities for fishing, boating and canoeing, bringing health benefits to communities as well as opportunities for tourism, recreation and leisure.

Surrey County Council and the Environment Agency will make their proposals public later this year and your feedback will help determine the final plans which will go through a thorough and robust consultation and planning process.



For more information, visit www.riverthamesscheme.org.uk

Spelthorne in Bloom 2022 needs you

Spelthorne in Bloom is a campaign run by volunteers with help from Spelthorne Council to celebrate the achievements of local gardeners and make the Borough bright and beautiful each summer.

The Spelthorne in Bloom Committee meet each month to plan and run

specific events throughout the year. In the winter we run a children's poster competition and the winner's design is used on the entry forms and posters. In April we hold a launch event for the Spelthorne in Bloom competition and announce the winning poster design. In the summer we open the annual competition, and our volunteers judge the entries during July and August. We hold an Awards Night in October where the Mayor presents prizes to all the category winners.



We are looking for new members to join our committee, especially from Staines upon Thames, Sunbury Village, Ashford Town and Charlton Village. If you are interested in joining us, please email spelthorne.inbloom@spelthorne.gov.uk or call 01784 446411



GYM | SWIM | CLASS | RELAX

Whether your goal is to be fitter, stronger or healthier in mind and body – Staines' premier health and wellness club is here to help you make 2022 your fittest year yet!

**BOOK A
TOUR TODAY**

Call 01784 463100, email sales@thethamesclub.co.uk or visit

thethamesclub.co.uk



*Terms and conditions apply. Offer based on any 12 month membership. Offer ends on the 31/03/2022.

SPECIAL INTRO OFFER
4 CLASSES | 14 DAYS | JUST £40*

Get fit, relax, disconnect from the outside world and reconnect with yourself in our stunning hot studio in Staines.

Hot Yoga Club

*For new customers only. 4 Classes must be used within 14 days of attending your first class.

www.hotyogaclub.co.uk

SUNBURY SPORTS BOWLS CLUB



sunburybowls.co.uk

Lower Hampton Rd
Sunbury TW16 5PS

Come and try LAWN BOWLS .. no equipment required other than flat shoes!

SAT 14TH MAY
SUN 15TH MAY
11AM-3PM





Dumsey Meadow in Chertsey is an area of grassland which has been left to grow naturally and has never been fertilised, drained or ploughed.

Due to its high plant diversity, Dumsey Meadow is a Site of Special Scientific Interest and is maintained by Spelthorne Council for its wildlife under the guidance of Natural England.

Grazing

The site is grazed by cattle each year from late summer to early winter.

The cattle graze at a height of 6cm which keeps the grass short and allows wildflowers to grow through. Grazing can be accompanied by a hay cut to remove excess dominant grasses.



Willows

The Willows on this site provide great habitat for wildlife. Woodpeckers drill holes in the wood to create nest cavities which other birds like great tits and nuthatches will also use.

Crevices in the bark create shelter for bats, who use the river to feed on insects at dusk.



Plants of Dumsey Meadow

Here are some of the more common plants you can find at Dumsey Meadow. The best time to see flowers is from June to August.



White Clover

Trifolium repens

White Clover has a white flowerhead of many petals. Each leaf is made up of

three leaflets marked with a light arc. On rare occasions this plant has four leaflets which is a symbol of luck.

Creeping Thistle

Cirsium arvense

The Creeping Thistle has small, spiky leaves to deter predators but has bright purple petals to attract pollinators like this bee.



Common Yarrow

Achillea millefolium

Common Yarrow is a meadow plant with clusters of little white flowers.

They have narrow leaves that look like feathers. Starlings and other birds use yarrow to line their nests.

Bird's Foot Trefoil

Lotus corniculatus

Bird's Foot Trefoil has a claw-shaped yellow flower. Trefoil means three lobes which describes the shape of the leaves. It is the foodplant of the Common Blue and the Silver-studded Blue Butterfly.



Birds of Dumsey Meadow

Dumsey Meadow is home to many birds which live on the River Thames. Here are some of the birds you may spot on your walk and how to identify them.



Grey Heron *Ardea cinerea*

Herons are a large grey bird with a black crest and long legs. They

stand very still on the river bank waiting for fish to swim past, and spear them using their sharp bill.

Mallard *Anas platyrhynchos*

The Mallard is the most common duck in the UK. The male has a distinct bottle green head and the females are entirely brown. They like to travel in small groups while they dabble for aquatic plants.



Egyptian Goose

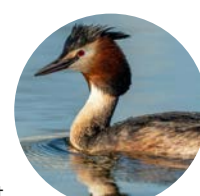
Alopochen aegyptiaca

Egyptian Geese are an introduced species which have settled in the UK.

The brown eye patch is a distinctive feature. They spend much of their time on land, eating grass and leaves.

Great Crested Grebe *Podiceps cristatus*

The black crest and red ruff are the key features of the Great Crested Grebe. You may see them diving for fish which they catch using their long sharp bill.



Dumsey Meadow is located opposite the Kingfisher Pub in Chertsey with parking available off Chertsey Bridge Road (KT16 8LF) and Thames Path.

YOUR LOCAL ELECTRICIAN

DO YOU WANT A QUICK RESPONSE
NO JOB TOO BIG OR TOO SMALL?

WHEN YOU NEED AN ELECTRICAL FAULT/
PROBLEM SOLVED, WE WILL SOLVE IT FOR
YOU. WE'RE WEARING FULL COVID PPE -
BE SAFE IN YOUR HOME AND AT WORK.

CONTACT **RICHARD** FOR A FREE SURVEY,
FREE CONSULTATION, FREE ESTIMATE.

FOR YOUR LOCAL QUALIFIED
ELECTRICIAN, NICEIC APPROVED.

CALL RICHARD
01784849181 OR 07875958912

www.electricianashfordmiddlesex.com or

www.facebook.com/ElectricianTWarea

BOWLS TASTER SESSIONS

Bishop Duppas Bowls Club
Walton Bridge Road, Shepperton, TW17 8NR

Sat 14th May 10am - 12pm
Sun 15th May 10am - 12pm
Tue 17th May 4pm - 6pm



Just bring a pair of flat soled shoes, we will
provide the bowls and coaching.

Enquiries call Andy 07557 477558 or Fran 07939 036341

Refreshments Provided



Leaks & Bursts, Boiler breakdowns, servicing & installs. Toilets & taps.
Radiators & pumps. Tanks & overflows. Baths & showers.

- ✓ Free estimates
- ✓ Fixed upfront prices
- ✓ Senior citizen discounts
- ✓ Work guaranteed
- ✓ Fully insured
- ✓ No call out charge

Call **Stuart** on **01784 279262**

Covering: Staines, Shepperton, Ashford, Sunbury, Wraysbury, Laleham, Egham & Stanwell.





New Corporate Plan unveiled

Spelthorne Council has launched its new Corporate Plan following approval at the Council meeting in December. The plan sets out the Council's ambition to be led by its communities, underpinned by five overarching 'CARES' priorities and seven 'PROVIDE' values.

The priorities for the next 2 years will focus on:



CARES

Our values, ethos and ways of working will inform and underpin everything that we do:



PROVIDE

The plan contains themes and aims that will be used to measure the impact of the work we do alongside our partners in the Borough and whether we have achieved the outcomes and delivered on the priorities in the plan.

A copy of the plan is available to view at www.spelthorne.gov.uk/corporateplan

Steps to solve the housing crisis

Spelthorne Council has become the first local authority in the country to convert part of its offices into affordable housing. In 2018, the Council reconfigured its offices to release almost half of the Knowle Green headquarters and has now transformed this space into 25 affordable flats. The apartments have been let on rents of up to 80% of the equivalent market rent through the Council's Housing Options team to ensure those most in need get priority. Residents will be offered five-year tenancies which provide more stability than the private sector.

The development has created approximately 17,800sqft of residential space, providing a mix of studios, one, two and three-bedroom flats over four floors, with large windows and spacious modern living accommodation.

At the end of 2021, the Mayor, Cllr Ian Harvey, opened two new facilities in Ashford for homeless residents. The White House on the Kingston Road in Ashford has 27 rooms and four self-contained flats for single homeless people, and Harper House on Fordbridge Road is providing emergency accommodation for up to 20 homeless families. Both facilities are being managed on the Council's behalf by Metropolitan Thames Valley Housing who have extensive experience in this field.

The Council has also given the green light for the redevelopment of a car park in Victory Close in Ashford for affordable key-worker homes. There will be a total of 127 homes, including 5 family homes, 8 three-bedroom family flats, 78 two-bedroom flats and 36 one-bedroom flats, all with parking and amenity space. All of the homes will be available at affordable rents, with 105 of the properties earmarked for NHS staff.



Harper House, Fordbridge Road



The White House, Kingston Road

Artist impression of Victory Close

For more information visit www.spelthorne.gov.uk

Shepperton Studios launches community fund

Shepperton Studios has launched a £500,000 community fund to support local individuals, non-profit and voluntary organisations. Working with independent local charity, the Community Foundation for Surrey, the Shepperton Studios Community Fund will be distributed over ten years and will benefit Shepperton and the wider Borough of Spelthorne.

The Fund forms part of Shepperton Studios' Set For More programme which focuses on creating opportunities for young people, investing in the local community and supporting underprivileged groups.

Local Councillor for Laleham and Shepperton Green, Cllr Maureen Attewell, said: "Shepperton Studios has always been a cornerstone of



our community and we're thrilled that our residents will benefit from this significant investment in local initiatives. The recent announcement of the expansion of Shepperton Studios is a huge boost for the local economy in Spelthorne and this £500,000 underpins its commitment over the next 10 years to help bolster local associations and groups, keeping our local community spirit thriving."

To apply for a grant from the Community Foundation for Surrey, visit www.cfsurrey.org.uk/applyforfunding. The first deadline for funding applications is April 2022.



Lottery grant for Stanwell Foodbank

Stanwell Foodbank received some good news toward the end of 2021 when they learned that they would receive a grant of £369,444 from the National Lottery Community Fund

to support them over the next three years.

Stanwell Foodbank was formed in September 2018 after its sister charity, Stanwell Events, identified the need for additional food support services in Stanwell. The Charity has since gone on to deliver 319,000 meals in 2021, supporting Spelthorne residents to access meals, fresh produce and long-life parcels. Their community building in Stanwell had a new kitchen installed thanks to Spelthorne Borough Council and has become a seven-day operation.

The foodbank is open Monday to Friday from 9am-2pm for food parcels and can also help people who need gas and electric top-ups. The charity also works with Stanwell Events to create fresh meals using surplus food.



Stanwell Food Bank

To contact Stanwell Foodbank, email info@stanwellfoodbank.org.uk or call 07495 84286.



Mindworks Surrey is the new name for Surrey's emotional wellbeing and mental health service for children and young people.

The 'i' in Mindworks is deliberately accentuated because, with this new service, the main emphasis is on giving children and young people a voice in decisions about their care.

Mindworks Surrey also has a new website www.mindworks-surrey.org providing children, young people, families and carers with information about services, advice and resources. It is a source of essential information, including how to ask for help in a crisis via the 24/7 help line – 0800 915 4644. It also features a dedicated area for professionals, including schools and GPs.

Spelthorne Volunteer Drivers



Would you like to help your community without leaving home? You could be a Duty Officer for Spelthorne Volunteer Drivers, a local charity which takes elderly and disabled people to medical appointments.

The role involves taking calls from people who need lifts and contacting the pool of volunteer drivers to make the necessary arrangements. You only need to be available to work one week in every five (10am - 12 noon, Monday - Friday) and we provide a mobile phone for that week.

It is a rewarding and satisfying role which helps maintain this vital service for local people.

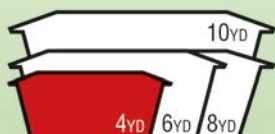
If you would like to be part of the team, please call 07817 926736, 10am - 12 noon Monday to Friday.

TLM



We are a family run business providing skip hire to the local community and surrounding area's.

We are committed to providing a quality, reliable and trustworthy skip hire service to all of our customers be that residential or commercial. With years of experience in the industry you can be sure of a professional and helpful service, with our team on hand to answer any questions you may have. **TLM skips come highly recommended by a wide range of clients.**



For bookings and advice please call

01784 257314 / 07958 234 856

or visit **www.tlmskiphire.co.uk**



twowheelsturning

BICYCLE SERVICE & REPAIRS

FIND US AT

Staines-upon-Thames market every Friday & Saturday for drop-in repairs

OR BOOK ONLINE

for local collection & drop-off service

twowheelsturning.co.uk/bookings
01784 904979



Driveway Specialists



Laleham Landscapes
The Complete Garden Service

- Artificial Lawn,
- Construction
- Design
- Decking & Patios
- Driveways
- Fencing
- Maintenance
- Paving & Brickwork
- Resin Bonding
- Tree Surgery
- Turfing - Ground Works & Lawn Care

Revive UR Drive

The Driveway Refurbishment Experts
Driveways, Patios and Paths Expertly Installed
or Professionally Restored, Cleaned and Sealed

01784 255 094

07961 523 235



sales@lalehamlandscapes.co.uk
www.lalehamlandscapes.co.uk



Staines Development Framework



Where are we now?

The Staines Development Task Group has been meeting on an almost weekly basis over the last few months to make rapid progress on getting the draft Framework produced. Topics for discussion have been the heights and densities of new buildings, movement and access, public spaces, and parking. We aim for the draft to be ready for the task group to review in March 2022.

What happens next?

There will be a further consultation on the draft Staines Development Framework, likely to be in May 2022. Depending on pandemic restrictions at the time, it is hoped we will be able to hold 'in person' events in the town to display the Framework and answer questions. Members of the public will be invited to give their views on the document and these responses will be analysed and any further changes considered by the Task Group.

The Local Plan and the Staines Development Framework will then be submitted to the Planning Inspectorate, a government organisation acting for the Secretary of State, which will arrange for an Examination in Public to take place.

What has happened so far?

Spelthorne Borough Council is producing a new Local Plan to include policies and site allocations to meet our housing, employment and infrastructure needs over the next 15 years, setting out how and where development will take place.

In 2018, we held a public consultation to consider broad options for how this could be achieved. The

four options were to intensify brownfield (previously developed) sites in the urban area, release Green Belt, maximise development opportunities in Staines-upon-Thames or a combination of these approaches. The option to maximise sites in Staines suggested that a 'masterplan' could be developed to help guide this approach. Staines is the Borough's largest town with good access links and has a sizeable proportion of potential development sites compared to other towns and villages in Spelthorne, which is why one of the options was to focus growth here.

The Council decided to pursue the fourth option of the combination approach, which would ensure development could be balanced throughout the Borough and meet our needs in the most sustainable way. There was then a further public consultation on Preferred Options from November 2019 to January 2020.

By this stage, work had begun to commission a Masterplan for Staines that would be adopted alongside the Local Plan as a Supplementary Planning Document (SPD). The Staines Development Task Group comprises all councillors who represent a Staines ward.

The Masterplan was renamed the Staines Development Framework and consultants began working with stakeholders to set out the key issues that the Framework would seek to address, followed by a public consultation on Objectives and Options. Since then, the Staines Development Task Group has considered the outcomes of the consultation and has been steering work to produce a draft Framework. This includes considering whether a 'zoning' approach could be used that would limit the heights and densities in more sensitive locations in Staines.

We will provide regular updates on our website at www.spelthorne.gov.uk/sdf

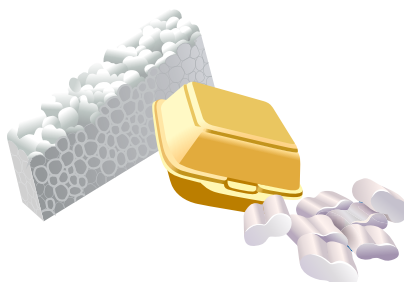
Recycle right

Did you know, you can't put the following items in your recycling bin:

plastic bags



polystyrene



nappies



crisps and sweet packets



If we find these items in your recycling bin, we won't be able to empty it.

To check which items can be recycled in Spelthorne, visit
www.spelthorne.gov.uk/recycling-search

Tired of taking garden waste to the tip?

Our garden waste collection service provides a convenient, low-cost way for residents with gardens to dispose of leaves, weeds and cuttings throughout the year. Fortnightly collections take place from 1 April 2022 to 31 March 2023, with a break during part of December and January.

Your garden waste is collected from the kerbside every other week and turned into compost which is then used by local farms. If you don't have much garden waste, you can share a subscription with your neighbour. The cost is £60 a year (plus a one-off charge of £27 for the bin). New customers can subscribe from the beginning of March for collections to start in April.



For information and to sign-up, visit www.spelthorne.gov.uk/gardenwaste

Stop before you burn!

Burning household waste causes toxic fumes, is anti-social and endangers wildlife.



If you are affected by, or concerned about burning, report in confidence...

☎ 01784 446251

✉ eh.residential@spelthorne.gov.uk

🌐 www.spelthorne.gov.uk/bonfires



FIND OUT WHAT YOUR HOME IN SPELTHORNE IS WORTH INSTANTLY!



Use Our FREE Instant Online Valuation Tool

If you're thinking of moving, start by getting a Hometrack Valuation Report to see how much your home is worth

Hometrack is the UK's largest automated valuer of residential properties and is relied upon by 13 of the 15 top UK high street lenders



Aaron Jameson & Zoe Foxman
Branch Directors



Get your FREE online valuation report now at: TWValue2020.co.uk or call: (24/7) 01784 770 628



TWValue2020.co.uk