



**7** Spelthorne  
Business Hub opens

**11-18** The Council's  
Annual Report

**20** Thanking local  
volunteers





RIVERMEDE  
COURT  
CINNAMON LUXURY CARE



## Find Peace of Mind at Rivermede Court

As well as offering exceptional residential care and short stays, Rivermede Court has a dedicated dementia community where our trained team celebrates the uniqueness of every individual with specialist care, engaging activities and uplifting living experiences.

We are delighted that Rivermede Court is now able to welcome visitors and potential residents. You can book an appointment to view our home in person in line with Government guidelines or if preferred, we can still offer a virtual tour.

**At Rivermede Court, people will always come first.**

**To find out more and to arrange a personalised visit please  
call Nicky on 01784 818 241  
or email [rivermede.enquiries@cinnamoncc.com](mailto:rivermede.enquiries@cinnamoncc.com)**

 @RivermedeCourtCare

RESIDENTIAL CARE | DEMENTIA CARE | RESPITE CARE

**Rivermede Court Care Home**  
The Avenue, Egham, Surrey, TW20 9AD  
[www.cinnamoncc.com/rivermedecourt](http://www.cinnamoncc.com/rivermedecourt)

\*Photography taken pre COVID-19



# Letter from the Leader



## Dear Residents,

I would like to take this opportunity to say that it is truly an honour to have been elected as the new Leader of Spelthorne Borough Council.

I am determined to do everything I can to support our residents and businesses as we take steps to recover from the pandemic. We have a long way to go after so many months of disruption, but I give my commitment

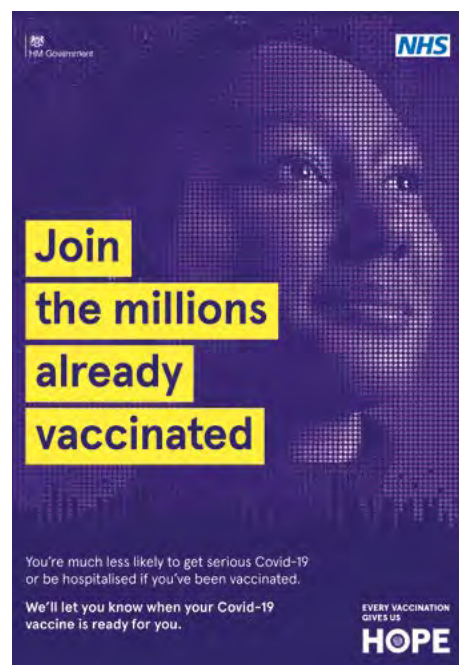
that, as a Council, we will be doing all we can to support every part of the community.

I am looking forward to a new chapter for the Council as we implement the Committee system of governance, which came into effect in May following a public consultation. Decisions which were previously taken by the Cabinet will now be made by five committees, all with cross-party representation. I believe this will allow for a broader involvement of all councillors in decision making and provide a more open, democratic and transparent way of conducting Council business.

Spelthorne is a great place to live and work, and I look forward to working with my fellow councillors and council staff to make sure that we deliver excellent services for every single one of our residents.

*Cllr Lawrence Nichols, Leader of the Council*

✉ [cllr.nichols@spelthorne.gov.uk](mailto:cllr.nichols@spelthorne.gov.uk)



The vaccine rollout is continuing at pace in the Borough and if you are eligible, or know friends or family who are, please book your vaccination so we can all get protected.

You can book online at [www.nhs.uk/conditions/coronavirus-covid-19/coronavirus-vaccination/book-coronavirus-vaccination/](http://www.nhs.uk/conditions/coronavirus-covid-19/coronavirus-vaccination/book-coronavirus-vaccination/)

It is very important to have both vaccines to ensure full protection. Please continue to follow the latest government guidance and test regularly, including asymptomatic testing, even if you have been fully vaccinated.

For the latest COVID-19 news and updates, including information on testing and support available visit [www.spelthorne.gov.uk/coronavirus](http://www.spelthorne.gov.uk/coronavirus)

# Contents

## Community

New Mayor	5
Ferry service: Sunbury to Walton	5
Meet the town centre manager	20
Thanking local volunteers	20

## Economic Development

Spelthorne Business Hub	7
Business Plan Competition	7

## Leisure and Wellbeing

Sunbury pool refurbishment	9
Girlguiding	9

## Community Wellbeing

Community Centres	10
-------------------	----

## Annual report

11-18

## Housing

New affordable homes	21
Facilities for homeless people	21

## Environment

Tackling 'legal highs'	23
Recycling rejects	27
Love your green spaces	27

## Contacts us:

- www.spelthorne.gov.uk
- 01784 451499
- Spelthorne Borough Council, Council Offices, Knowle Green, Staines-upon-Thames, TW18 1XB

## Follow us on social media:

- @spelthornebc
- @spelthornebc
- @spelthorneboroughcouncil
- Spelthorne Borough Council

Sign up to our monthly newsletter: [www.spelthorne.gov.uk/enews](http://www.spelthorne.gov.uk/enews)

Sign up to the 'My Alerts' service: [www.spelthorne.gov.uk/myalerts](http://www.spelthorne.gov.uk/myalerts)

Bulletin enquiries: 01784 446297 / 01784 444260

Editors: Jennifer Medcraft / Louise King

Design: Tanya Allen

Cover: Monica Chard, overall winner of Capture Spelthorne Photography Competition 2020.

Advertising enquiries: Send an email to [frontline@frontlinedesigners.co.uk](mailto:frontline@frontlinedesigners.co.uk) or call 01342 312570.

Spelthorne Borough Council does not accept responsibility for, or endorse, any products or services offered by advertisers.

The Bulletin is available in large print and on CD. Please email [l.king@spelthorne.gov.uk](mailto:l.king@spelthorne.gov.uk) or call 01784 444260.

The Bulletin is our community magazine produced by Spelthorne Borough Council, delivered free to every home in Spelthorne. Circulation 45,000.

Printed on recycled paper.





WE ARE A LOCAL PODIATRY/CHIROPODY CLINIC BASED  
IN ASHFORD

Do you suffer with  
painful feet?  
Not sure what to do?



We are offering a Free Foot Assessment with one of  
our highly trained practitioners to discuss your  
specific problem.

This is only valid to the first 10 enquiries

call us now on **01784 250 781** or visit our website at

**www.footcorner.co.uk**

**1 Church Parade, Church Road, Ashford,  
TW15 2TX**



**Welcome to SenaCare Services...**  
**Our goal is to make your life better.**

SenaCare Services LTD is a privately-owned company which  
is dedicated to helping you with your care needs to achieve a  
better quality of life in your own homes.

We provide the following services;

- Domiciliary Care Services • Companionship Care
- Live in Care • Dementia Care
- Physical Disability Support at Home

Like to know more please contact us on  
**01784 410 200** or visit our website  
**www.senacareservices.co.uk**

Regain your **freedom** with.. **Clearwell mobility**



**Riser Recliners**  
from **£499**  
ex vat



**Mobility Scooters**  
from **£649**  
ex vat



**Wheelchairs**  
from **£159.99**  
ex vat

PPE Essentials instore & online



Visit Your Local Showroom

<b>Staines</b> 11/17 Kingston Road, Staines TW18 4QX <b>01784 44 00 44</b>	<b>Woking</b> 105/107 Goldsworth Road, Woking GU21 6LJ <b>01483 767 733</b>
--	---

Shop online at:  
**www.clearwellmobility.co.uk**



**Profiling  
Beds**  
in a choice  
of sizes



**Walking  
Aids**  
from sticks  
to walkers

**Cosyfeet**  
extra roomy



**Extra Wide  
Slippers &  
Shoes**

**FREE 2021 Brochure**

**NEW!**

SPTB



Name \_\_\_\_\_  
Address \_\_\_\_\_

Postcode \_\_\_\_\_

Post to: FREEPOST CLEARWELL MOBILITY



# A new Mayor for Spelthorne

**Cllr Ian Harvey was elected as the new Mayor for Spelthorne at the Annual Council Meeting on 27 May. Cllr Susan Doran was elected as Deputy Mayor.**

Cllr Harvey was first elected as a borough councillor for Sunbury East in May 2013 and re-elected in 2015 and 2019. He has always taken a special interest in ward issues and works closely with local residents. He was Leader of Spelthorne Borough Council from February 2016 – June 2020.

Cllr Harvey has lived in Sunbury-on-Thames for 24 years and is married to Helen, who is also a local councillor, and they have two sons, Saul and Gideon.

When time allows, he is a keen photographer and also enjoys skiing, boating and travelling.

During the meeting, Cllr Ian Harvey said: "I thank you for electing me as Mayor for 2021/22. I am humbled that this position has been entrusted to me and I intend to do my very best to justify it.

"I especially wish to reach out to young people via schools, sport, youth associations and events, as



well as the charities that support them. For too long, young people have been marginalised from society and politics.

"The plight of families with children with special educational needs is also something I wish to focus on. Through no fault of their own, these families can find themselves with little support, fighting for the needs of their children. I want to redress this and afford as much help as possible.

"I have not yet finalised my list of chosen charities, but it is my express intention that organisations which support and advocate for young people will be at the core of my fundraising activities.

"I am very honoured to have been elected and will take the role very seriously, as I did when I was Leader of the Council. I am very proud of the Borough and aim to be the best advocate and ambassador possible."

Contact the Mayor's office by email [mayor@spelthorne.gov.uk](mailto:mayor@spelthorne.gov.uk) or call **01784 446275**

## Budget consultation

Spelthorne Borough Council would like to invite people who live and work in the Borough to tell us their views on the proposals for the 2022/2023 budget and beyond. We want to know what services are the most important to local people and how to prioritise and invest in service delivery so we can make the best decisions for residents and businesses in the Borough.

Our aim is to propose future budgets that match community needs, protect key services and maintain financial stability during these challenging times.

The consultation will seek feedback on ways the Council could contribute towards balancing its budget to understand the needs and priorities for communities in the Borough. It will ask for your views and suggestions on issues and options, including our financial strategy, service provision and Council Tax.

For further information and how to have your say visit: [www.spelthorne.gov.uk/budgetconsultation](http://www.spelthorne.gov.uk/budgetconsultation)



**SUNBURY  
Ferry Ltd.**

## A new ferry service for Sunbury

Ferries from Sunbury across the river to Walton operated for hundreds of years and were a vital link for the local communities. Sadly, with the advent of modern transport, bridges and road links, the ferries died out towards the 1970s - until now.

Thanks to an initiative by Spelthorne Council and the River Thames Task Group, a new ferry service has been introduced for the area.

As part of the project, two local residents, Neil Huntingford and Simon Harris, set up Sunbury Ferry Ltd. Formed as a not-for-profit community company, they recruited over two dozen local volunteers to operate the ferry service at weekends and public holidays throughout the summer months. Many of the volunteers are already experienced boaters whilst others have taken advantage of the opportunity to gain a qualification through training at Queen Mary Reservoir.

The Council has provided the initial funding to get this community initiative up and running, with other local organisations adding their support as the project has developed.

Keen to be 'green', the new ferry is powered by a whisper-quiet electric engine and crosses the river from the Sunbury bank opposite the Riverside Arts Centre, over to the Walton bank downstream of Sunbury Lock.

It is hoped that the new service will be used by the local communities as well as attracting visitors to the area to enjoy the many amenities on offer.

Visit [www.sunburyferry.co.uk](http://www.sunburyferry.co.uk) for more details





## Owning your own home could cost less than you think with Shared Ownership

Step on to the property ladder with a beautiful new home at Ascot House, a collection of stylish new apartments just moments from High Street shops, restaurants and Staines railway station.



## SHOW HOMES NOW OPEN, BOOK A VIEWING TODAY!

Studio, 1 and 2 bed apartments,  
available from **£76,250** for a **25%** share,  
full market value **£305,000**.

To book a tour or find out more  
about Shared Ownership visit  
**[ascothousestaines.co.uk](http://ascothousestaines.co.uk)** or call **0333 305 4812**



# Spelthorne Business Hub

**The Spelthorne Business Hub on the Hanworth Road in Sunbury was opened on 11 June by the Mayor of Spelthorne, Cllr Ian Harvey.**

The Hub opened its doors for the first time for local businesses to look around and meet the team from CoTribe CIC who will be running the service.

The Business Hub will provide a vibrant coworking environment for new start-ups and early-stage businesses, as well as a base for all businesses in Spelthorne to access training and support to help their businesses recover from the pandemic.

It offers the perfect location for entrepreneurs to develop their ideas and turn an innovative spark into a strong commercial enterprise.

The new facility offers serviced office facilities with a choice of hot



desks and permanent desks. Various packages are available, with prices starting from as little as £99 per month, with the following benefits:

- 24/7 unlimited access
- superfast WIFI
- access to meeting room and break-out spaces
- free workshops and seminars
- access to mentors
- membership to the Spelthorne Business Forum
- excellent networking opportunities
- parking
- tea and coffee for your team and visitors



For more details or to arrange a visit, email Spelthorne Council's Economic Development team at [e.development@spelthorne.gov.uk](mailto:e.development@spelthorne.gov.uk)



## The Spelthorne Business Plan Competition 2021

Are you a budding entrepreneur with dreams of starting your own business?

Kwasi Kwarteng MP is hosting his 7th Business Plan Competition in partnership with Spelthorne Borough Council. If you have a great business idea but need some help to get things off the ground, this is an opportunity to give your idea the boost it needs, with a prize of £3,500.

The six best entries will be asked to present their business idea to a panel of expert judges at a Dragons'

Den style final, hosted at BP in Sunbury on 23 September 2021. Each of the finalists will be given support to perfect their pitch.

Entries are welcome from individuals or teams of up to four people.

To enter visit [www.spelthorne.gov.uk/businesscomp](http://www.spelthorne.gov.uk/businesscomp) or search @Spelthorne Business Plan Competition on Facebook. The competition is open to Spelthorne residents aged over 16.

The deadline for applications is 16 August 2021.

For more information or help with the application process, email [karen.porter@parliament.uk](mailto:karen.porter@parliament.uk)

## Capture Spelthorne 2021 Photography competition

Just a reminder, the closing date for this year's Capture Spelthorne photography competition is 31 August.

For full details on the categories, prizes and how to enter, visit [www.spelthorne.gov.uk/capture](http://www.spelthorne.gov.uk/capture)



## Spelthorne Business Awards

There's still time to enter the Spelthorne Business Awards. Big or small, we have an award category to suit your business!

Deadline for entries is 31 July. A black-tie dinner to announce the winners will take place on 14 October.

To enter, visit [www.spelthorne.gov.uk/SBA](http://www.spelthorne.gov.uk/SBA)

## Supporting business

During the Covid pandemic, Spelthorne Council distributed over £50m in support grants to businesses in the Borough.

These financial grants have been instrumental in keeping many of the small businesses based in Spelthorne afloat during very challenging times. Further support will be made available for businesses during 2021 and continue until the end of March 2022.

The Council has provided regular news and updates to businesses via social media and the website to make them aware of the financial help available. Additionally, the Spelthorne Business Forum has played a vital role in keeping its members informed about grants and support.

To receive updates regarding the support available for businesses, register with the Spelthorne Business Forum, which is free to join. Visit [www.sbf.biz](http://www.sbf.biz)





Leaks & Bursts, Boiler breakdowns, servicing & installs. Toilets & taps. Radiators & pumps. Tanks & overflows. Baths & showers.

- |                            |                      |
|----------------------------|----------------------|
| ✓ Free estimates           | ✓ Work guaranteed    |
| ✓ Fixed upfront prices     | ✓ Fully insured      |
| ✓ Senior citizen discounts | ✓ No call out charge |

Call **Stuart** on **01784 279262**

Covering: Staines, Shepperton, Ashford, Sunbury, Wraysbury, Laleham, Egham & Stanwell.



Support with  
Confidence  
SURREY COUNTY COUNCIL



## Spelthorne Home Improvement Agency

**Are you over 60 or disabled and need help living in your own home in Spelthorne?**

**We offer advice, support and help to tenants and homeowners within the borough of Spelthorne who are aged over 60 or have disabilities.**

We can help you to do the repairs, improvements and adaptations you want in your home. We will guide you through the whole process, helping you with decisions and organising finance, as well as arranging and overseeing the building work.

### Typical jobs include:

- level-access showers
- ramps
- stair lifts
- downstairs toilets.

### What will it cost me?

The advice we offer is free and you are under no obligation to go ahead with any work. The costs of work can often be paid for by a grant from the council.

**Contact us to find out more**

[www.a2dominion.co.uk](http://www.a2dominion.co.uk) [hiaadmin@a2dominion.co.uk](mailto:hiaadmin@a2dominion.co.uk)

**020 8825 1759**







## Sunbury swimming pool refurbishment

**The swimming pools at Sunbury Leisure Centre will be re-opening at the end of July following an extensive refurbishment.**

The pools have been closed for over a year due to severe damage to the tiling during the first Covid lockdown. Both the main pool and the teaching pool have been completely re-tiled, the walkways around the pools

have been tiled and the pool hall has undergone complete re-decoration.

Everyone Active is delighted to be welcoming swimmers back to the centre and, to celebrate the reopening, are hosting an open weekend on Saturday 31 July - Sunday 1 August. Members and non-members will be welcome to try out the improved pool facilities for free, along with the centre's other activities including the gym, sports hall and climbing wall. Sessions will need to be booked in advance and members will be informed of further details in the coming weeks.

## Girlguiding

Are you looking for a way for your daughter to make new friends, have fun and grow her confidence?

### Rainbows

Rainbows is for girls aged 5-7 years of age. Rainbows learn by doing – they get their hands dirty, do arts and crafts and play sports and games.

### Brownies

Brownies is about trying new things that teach girls aged 7-10 years about themselves, their community, and their world.



### Guides

Guides have a varied programme designed to inspire and challenge girls from 10-14 years, from taking part in fun activities, to special events and trips away.

### Rangers

For girls aged 14-18, Rangers wear a new uniform, have fun doing activities together and receive recognition for their achievements with badges and awards. Rangers offers many unique opportunities, including international travel.

Girlguiding groups meet in several venues across Spelthorne so if your daughter is interested, register on-line at [www.girlguiding.org.uk](http://www.girlguiding.org.uk), or email your local district:

Ashford:  
[Girlguidingashford@gmail.com](mailto:Girlguidingashford@gmail.com)

Shepperton:  
[Sheppertongirlguiding@gmail.com](mailto:Sheppertongirlguiding@gmail.com)

Staines:  
[Stainesdistrict@hotmail.co.uk](mailto:Stainesdistrict@hotmail.co.uk)

Sunbury:  
[GirlguidingSunbury@hotmail.com](mailto:GirlguidingSunbury@hotmail.com)

## Leisure Directory – advertise for free!

Would you like to advertise your club, activity or group for free in our Spelthorne Leisure Directory? Visit our website and simply complete the online form.

Our Directory contains a huge range of clubs, social groups and sporting activities on offer in Spelthorne to help you make the most of your leisure time.

Visit [www.spelthorne.gov.uk/leisuredirectory](http://www.spelthorne.gov.uk/leisuredirectory)



## Music in the Parks

We are hoping that music concerts in The Walled Garden in Sunbury will go ahead this summer (Covid-19 restrictions permitting). Once we have further information we will update the website [www.spelthorne.gov.uk/music](http://www.spelthorne.gov.uk/music).

All performances (if they go ahead) will start at 2pm. Bring your own chairs or picnic blankets and ensure you follow the current Covid-19 guidance. Please note that performances may be cancelled at short notice.

Please visit [www.spelthorne.gov.uk/music](http://www.spelthorne.gov.uk/music) for a list of dates and performers

## Cycling for Health

Spelthorne's Cycling for Health Scheme offers regular organised rides of around 5-12 miles, starting within the Borough and riding through surrounding areas. Rides take place during the week and are aimed at older adults who are getting back into cycling. All rides are free of charge and participants often stop for a drink and a chat after the ride.

For more information and to book visit [www.spelthorne.gov.uk/cyclingforhealth](http://www.spelthorne.gov.uk/cyclingforhealth), email [leisure@spelthorne.gov.uk](mailto:leisure@spelthorne.gov.uk) or call 01784 446433



# Welcome back to the Community Centres

We have four Community Centres in Spelthorne which provide a warm and welcoming environment for older people and the wider community. They offer a range of opportunities to socialise, learn new skills and keep fit.

Unfortunately, the centres were forced to close during the Coronavirus lockdown but are now starting to make plans to reopen where possible and look forward to seeing everyone again.

To find out what services are currently being offered, please contact your local centre:

## Benwell Community Centre

Downside, Sunbury-on-Thames, TW16 6RT

☎ 01932 784232

✉ [benwell.centre@spelthorne.gov.uk](mailto:benwell.centre@spelthorne.gov.uk)

## Fordbridge Community Centre

Clarendon Road, Ashford, TW15 2PU

☎ 01784 243880

✉ [fordbridgecentre@spelthorne.gov.uk](mailto:fordbridgecentre@spelthorne.gov.uk)

## Greeno Community Centre

Glebeland Gardens, Shepperton, TW17 9DH

☎ 01932 246173

✉ [greeno.centre@spelthorne.gov.uk](mailto:greeno.centre@spelthorne.gov.uk)

## Staines Community Centre

Thames Street, TW18 4EA

☎ 01784 463073

✉ [staines.community.centre@spelthorne.gov.uk](mailto:staines.community.centre@spelthorne.gov.uk)

Visit [www.spelthorne.gov.uk/communitycentres](http://www.spelthorne.gov.uk/communitycentres) or call 01784 446389 for more details

## Meals on Wheels

The Spelthorne Meals on Wheels team can deliver lunch, and dinner (from 5pm), up to seven days a week. The cost of a main meal and pudding is £4 and for a small extra charge you can also order a freshly made sandwich or a frozen meal to heat later.

As well as the convenience of having food prepared for you, many residents like the reassurance of knowing someone will call on them each day. Meals on Wheels are available to residents of all ages who find it difficult to prepare a daily meal, and can be ordered for short periods of time.

For more information, visit [www.spelthorne.gov.uk/MOW](http://www.spelthorne.gov.uk/MOW) or call our Meals on Wheels team on 01784 444265



## Spelthorne Rentstart

### Rebuilding Lives in our Community

Rentstart is a dedicated Spelthorne charity for single people and childless couples who may be homeless or at risk of homelessness. Our charity provides advice and assistance to those who live in or have a connection with Spelthorne, with the aim of helping them secure affordable rented accommodation. Our work, run by a great team of experienced staff and volunteers, has been more important than ever during the pandemic and we have continued to help reduce the impact of homelessness in our Borough and support people through these difficult times.



If you need our help, are interested in becoming involved or are a landlord, email us at [info@spelthornerentstart.org.uk](mailto:info@spelthornerentstart.org.uk) or call 01784 446422

## Personal alarms

Managed by Spelthorne Council, SPAN is a personal alarm system which helps people to live independently in their own homes.

With the touch of a button worn around your wrist or neck, you can contact the 24-hour care centre who will arrange help from family, friends or the emergency services at any time of day or night.

Charges start from £4.30 per week.

To contact a member of the SPAN team, email [span@spelthorne.gov.uk](mailto:span@spelthorne.gov.uk) or call 01784 444277. Visit [www.spelthorne.gov.uk/span](http://www.spelthorne.gov.uk/span)



# Spelthorne Borough Council

## Annual Report 2020/2021



### Message from the Leader, Cllr Lawrence Nichols



I am pleased to present the Spelthorne Borough Council Annual Report for 2020/21.

Despite the significant impact of COVID-19, it is important that we reflect on and evaluate our performance on behalf of our residents. I believe this last year has

connected the Council more closely with the community we serve. Most significantly, when our residents needed us during the pandemic, officers and councillors worked hand-in-hand, putting in many extra hours to set up a comprehensive local welfare response system.

We demonstrated the power of localism; councillors, staff, neighbours, and community groups all pulled together for the common good and I offer a heartfelt thank you to all who were involved. I would also like to thank our community for their input into the many consultations conducted in the last year. Your ideas and opinions are very much welcomed and have helped shape some key decisions, including how decisions will now be made within the Council under the new Committee Model of Governance.

As we move forward, our focus will be on the recovery from the COVID-19 pandemic and we will continue to engage and support our communities and business groups. This Council recognises the need for additional housing in the borough and is committed to the delivery of high-quality affordable developments. When taking decisions, we shall be ensuring that they are consistent with our commitment to the environment and prioritising climate change initiatives.

### Message from the Chief Executive, Daniel Charles Mouawad



2020/21 was a year like no other, characterised by upheaval, change and for many, hardship and worry. However, this authority demonstrated considerable success in delivering excellent, effective, and efficient services for our residents and businesses throughout the pandemic.

Our Annual Report illustrates the work carried out by this Council in support of the local communities that are the building blocks of this Borough. In the face of ongoing and emerging challenges we have remained focussed on delivering strong and resilient services that are truly responsive to the needs of our residents and local businesses. We are working hard to bring economic recovery and success to Spelthorne whilst ensuring that climate change initiatives underpin all that we do as we seek to protect our beautiful environment.

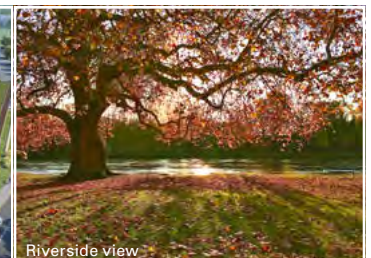
I take this opportunity to thank all staff who adapted so quickly to the changing needs of our organisation and our community over the last 18 months. Not only did they deliver planned projects and services, they also took on a significant amount of extra work and developed services and projects, adopting new ways of doing things in a very short amount of time. I couldn't be more proud of the team here at Spelthorne Borough Council and also thank the Mayor and Councillors for their continued support in what has been a very busy and challenging year. We are very well placed to meet the needs of our community and I look forward to the next chapter for this Borough.



Sunbury Walled Garden



New Staines Leisure Centre



Riverside view



Benwell House



Staines High Street



Victory Place proposal

# Spelthorne Borough Council's Priorities



**Supporting residents, particularly families, the elderly and the vulnerable by delivering services to keep our community connected and cared for.**

- 'Support4Spelthorne' community hub - early pandemic support to provide food and assistance for vulnerable residents
- discretionary services including Meals on Wheels, community alarm network

(SPAN), community transport and community centres

- assisting hospital discharge patients
- residential housing for homeless single adults and families with the White House and Harper House in Ashford, both set to open in summer 2021
- providing hot and nutritious meals to families and children during school holidays and closures



**We need to provide homes to meet the needs of residents in Spelthorne and many affordable home schemes are being progressed in the Borough.**

- Victory Close in Ashford - 100% affordable housing for NHS and key workers in the Borough
- 25 affordable rented apartments

at Knowle Green in Staines-upon-Thames

- Benwell House, Sunbury, welcoming new occupants with 44 affordable and key worker homes
- over 800 affordable homes are currently in progress or planned across the Borough



**Generating a thriving and sustainable post COVID-19 future.**

- community engagement
- supporting local food banks and charities
- economic development recovery plan from impacts of COVID-19 and Brexit
- high street recovery across the Borough; financial support, training,

new cycle racks, digital advertisement screens, ramps to improve accessibility

- Spelthorne Business Hub
- 'buy-local' procurement - the Council will purchase goods and services from local businesses where possible
- maintain financial sustainability



**Tackle climate change, actively improve our environment and focus on green and sustainable recovery plans for the Borough.**

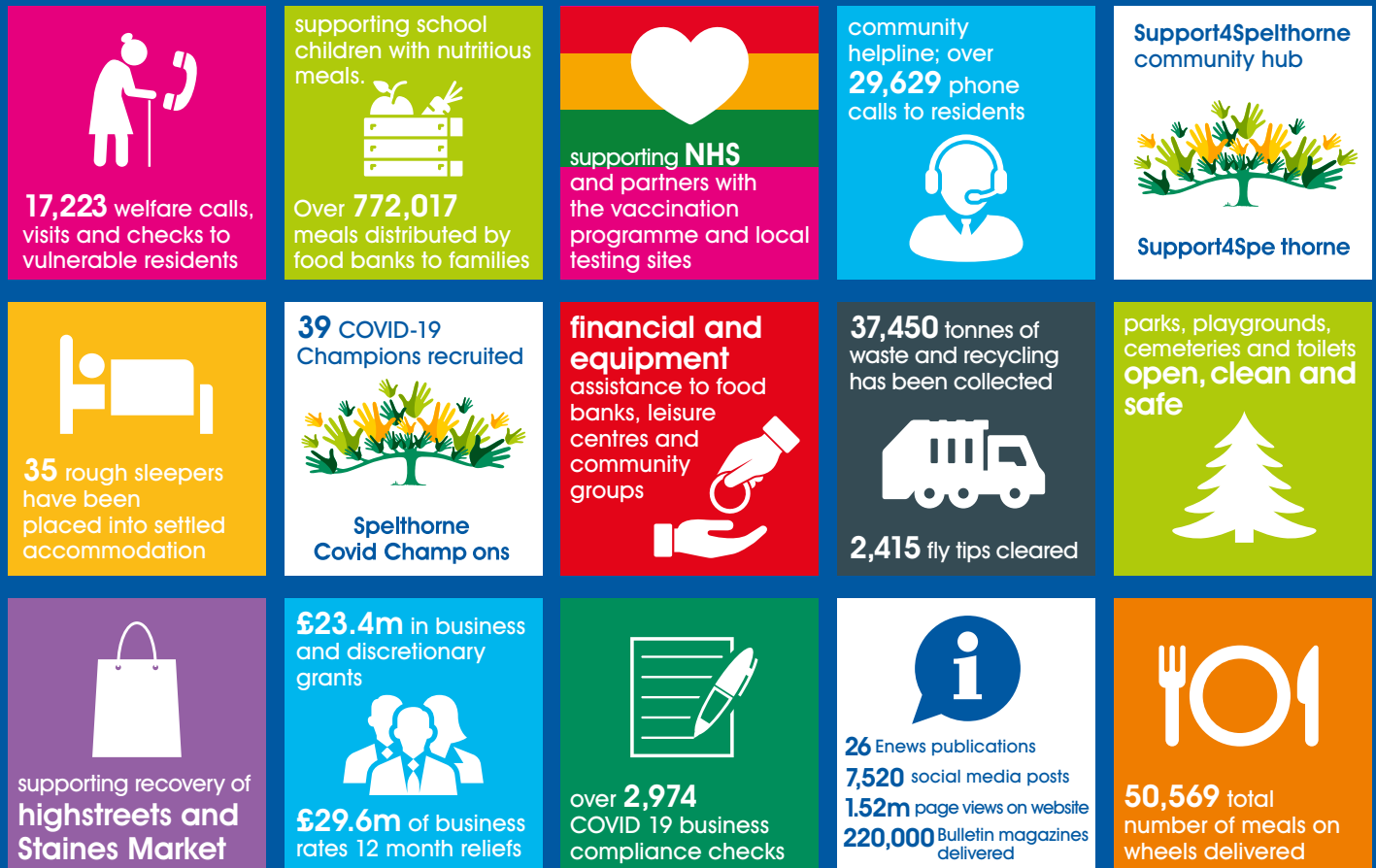
- solar panels on Council owned assets
- electric cars and bicycles
- using 'Passivhaus' technology for new Leisure Centre in Staines-upon-

Thames, making it the first of its kind for the UK

- a Councillor task group to tackle climate change to enhance and accelerate climate change initiatives and housing developments that incorporate green and cost-effective design specifications



# COVID19 – Spelthorne's response, 16 months on...



## Recovery

As we look to the future and a post pandemic world there are 5 key elements that Spelthorne Borough Council will focus on:

### Community

- strong leadership
- support and help
- financial support
- preventing homelessness
- leisure, health and wellbeing



### Economy

- business support
- skills and training
- Spelthorne Business Hub
- business grants
- jobs and inward investment
- regeneration and tourism



### Green

- tackle climate change
- clean energy
- promote cycling or walking
- sustainable housing
- clean and safe parks
- biodiversity



### Services

- maintain and improve key services
- sustainability
- accessibility to services
- digital transformation



### Keeping you informed

- engagement
- accessibility
- develop and adapt communication channels



## Committee Model of Governance

Since May 2021 and following a public consultation, we now operate under a Committee Model of Governance and the below Committees will make all decisions on Council business.



## Your Spelthorne Borough Councillors

Borough Councillors are elected by the community to make decisions on behalf of residents about local services including rubbish and recycling, environmental health, services for older people, planning, housing, leisure facilities and parks. They represent their ward areas for four years. Councillors are not paid a salary for their work, but they do receive an allowance. If you have a problem in your area or wish to comment on an aspect of the Council's service, then you can contact one of your local councillors.

If you are not sure who your local councillor is, visit: <http://my.spelthorne.gov.uk>. Call Committee Services on 01784 446240 or email [committee.services@spelthorne.gov.uk](mailto:committee.services@spelthorne.gov.uk)

### Key:

- Conservative
- Labour
- Independent Group
- United Spelthorne Group
- Independent Labour Group
- Independent Spelthorne Group
- Liberal Democrat Green Group

### Ashford Common



**Clare Barratt**  
cllr.cbarratt@spelthorne.gov.uk



**Richard Barratt**  
cllr.barratt@spelthorne.gov.uk



**Bob Noble**  
cllr.noble@spelthorne.gov.uk

### Ashford East



**Rose Chandler**  
cllr.chandler@spelthorne.gov.uk



**John Boughtflower**  
cllr.boughtflower@spelthorne.gov.uk



**Tony Mitchell**  
cllr.mitchell@spelthorne.gov.uk

### Ashford North and Stanwell South



**Amar Brar**  
cllr.brar@spelthorne.gov.uk



**Sati Buttar**  
cllr.buttar@spelthorne.gov.uk



**Joanne Sexton, Deputy Leader**  
cllr.sexton@spelthorne.gov.uk

### Ashford Town



**Nick Gething**  
cllr.getting@spelthorne.gov.uk



**Naz Islam**  
cllr.islam@spelthorne.gov.uk



**Olivia Rybinski**  
cllr.rybinski@spelthorne.gov.uk



**Halliford and Sunbury West**





**Sandra Dunn**  
cldr.dunn@spelthorne.gov.uk

**Tom Fidler**  
cldr.fidler@spelthorne.gov.uk

**Lawrence Nichols, Leader**  
cldr.nichols@spelthorne.gov.uk

**Laleham and Shepperton Green**





**Maureen Attewell**  
cldr.attewell@spelthorne.gov.uk

**Mary Madams**  
cldr.madams@spelthorne.gov.uk

**Richard Smith-Ainsley**  
cldr.smith-ainsley@spelthorne.gov.uk

**Riverside and Laleham**








**Michele Gibson**  
cldr.gibson@spelthorne.gov.uk

**Tony Harman**  
cldr.harman@spelthorne.gov.uk

**Denise Saliagopoulos**  
cldr.saliagopoulos@spelthorne.gov.uk

**Shepperton Town**

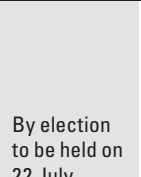






**Colin Barnard**  
cldr.barnard@spelthorne.gov.uk

**Vivienne Leighton**  
cldr.leighton@spelthorne.gov.uk

**Robin Sider BEM**  
cldr.sider@spelthorne.gov.uk

**Staines**




By election to be held on 22 July.

**Vacancy**  
Updates at [www.spelthorne.gov.uk/elections](http://www.spelthorne.gov.uk/elections)

**Thomas Lagden**  
cldr.lagden@spelthorne.gov.uk

**Veena Siva**  
cldr.siva@spelthorne.gov.uk

**Staines South**








**Chris Bateson**  
cldr.bateson@spelthorne.gov.uk

**Jenny Vinson**  
cldr.vinson@spelthorne.gov.uk

**Sinead Mooney**  
cldr.mooney@spelthorne.gov.uk

**Stanwell North**








**Jim McIlroy**  
cldr.mcilroy@spelthorne.gov.uk

**Susan Doran, Deputy Mayor**  
cldr.doran@spelthorne.gov.uk

**John Doran**  
cldr.jdor@spelthorne.gov.uk

**Sunbury Common**








**Ian Beardsmore**  
cldr.beardsmore@spelthorne.gov.uk

**Richard Dunn**  
cldr.rdu@spelthorne.gov.uk

**Bernie Spoor**  
cldr.spoor@spelthorne.gov.uk

**Sunbury East**

**Helen Harvey**  
cldr.hharvey@spelthorne.gov.uk

**Ian Harvey, Mayor**  
cldr.harvey@spelthorne.gov.uk

**Kathy Grant**  
cldr.grant@spelthorne.gov.uk

## Your County Councillors

The following County Councillors represent Spelthorne.

<p><b>Ashford</b></p>  <p><b>Joanne Sexton</b> Joanne.Sexton@surreycc.gov.uk</p>	<p><b>Laleham and Shepperton</b></p>  <p><b>Maureen Attewell</b> Maureen.Attewell@surreycc.gov.uk</p>	<p><b>Lower Sunbury and Halliford</b></p>  <p><b>Buddhi Weerasinghe</b> Buddhi.Weerasinghe@surreycc.gov.uk</p>	<p><b>Staines</b></p>  <p><b>Sinead Mooney</b> sinead.mooney@surreycc.gov.uk</p>	<p><b>Staines South and Ashford West</b></p>  <p><b>Denise Turner-Stewart</b> denise.turnerstewart@surreycc.gov.uk</p>	<p><b>Stanwell and Stanwell Moor</b></p>  <p><b>Robert Evans</b> robert.evans@surreycc.gov.uk</p>	<p><b>Sunbury Common and Ashford Common</b></p>  <p><b>Alison Griffiths</b> alison.griffiths@surreycc.gov.uk</p>
--	--	---	---	---	---	---

If you are not sure who your county councillor is, please visit:  
[www.surreycc.gov.uk/council-and-democracy/councillors-and-committees](http://www.surreycc.gov.uk/council-and-democracy/councillors-and-committees) or call 03456 009 009

## Your Member of Parliament

**Your Member of Parliament**



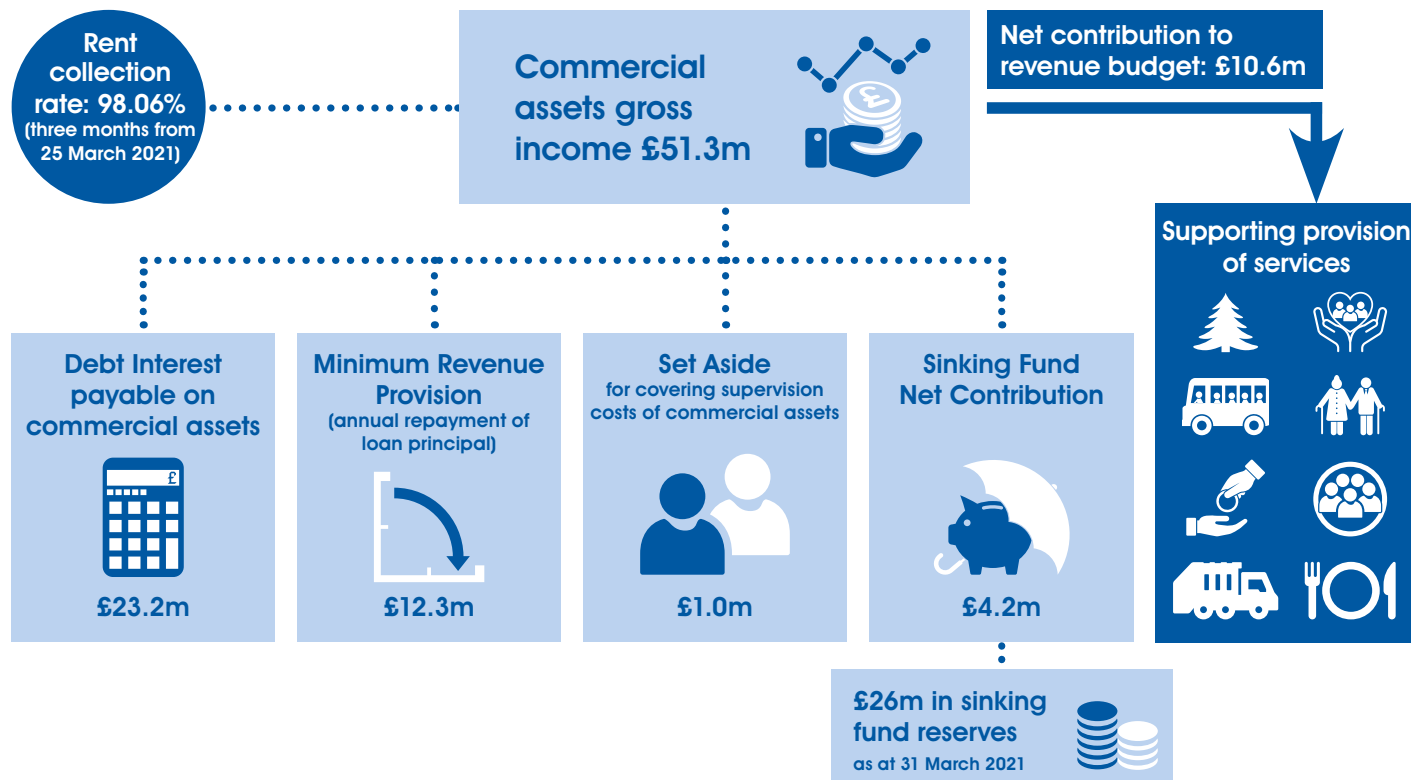
**Member of Parliament for the Spelthorne Constituency:**  
**Kwasi Kwarteng MP**  
020 7219 4017  
kwasi.kwarteng.mp@parliament.uk

The role of an MP is to review legislation and represent the interests of local residents in Parliament.

In the constituency, MPs support local community groups, publicise local issues and endeavour to help constituents resolve any issues by making representations on their behalf.

## Commercial Assets Dashboard Revenue Budget: 2021/22

The diagram below explains how our commercial property strategy operates. You will see the incoming and outgoing values as well as how much money is generated for our Council's reserves. Key to this strategy are the funds generated (£10.6million in 2021/22) which contribute to the Council's budget and go directly towards many frontline services that vulnerable residents rely on, including; community transport, charitable donations, foodbanks, community centres and meals on wheels. You can find further information on this strategy, news and FAQs at [www.spelthorne.gov.uk/propertyinvestments](http://www.spelthorne.gov.uk/propertyinvestments)



## Peer Review

The local authority was praised in a recent Local Government Association (LGA) Corporate Peer Review report after Spelthorne Borough Council invited the LGA to conduct a financial peer review of the Council in late 2020. As part of the Local Government Association's first ever 'virtual' review, a team of senior officers and an experienced Council Leader from another authority undertook interviews and focus groups with Spelthorne's staff, Councillors and external stakeholders, spending over 300 hours developing its findings. Since that time the Council has developed an action plan to address all the recommendations in the report. The full report, press release and action plan can be read at [www.spelthorne.gov.uk/peerreview](http://www.spelthorne.gov.uk/peerreview)

A number of the recommendations have already been addressed at least in part. The key conclusions were that the Council should use its relatively strong financial position to: **pause - reflect - realign**, particularly in the face of the additional challenges created by COVID-19.

### Actions

- To focus on clear priorities and explain how resources will be used within the capacity of the organisation**
- Continue to evaluate risk management and its impact on future financial performance and sustainability**
- Continue to meet targets and drive forward the Council's capital programme**
- Ensure effective programme and project management is embedded across the organisation for both capital and revenue spend**
- Continue to promote openness and transparency of decision making**



## Cleaner Greener Spelthorne: Climate Emergency in Spelthorne

At the end of last year, Spelthorne Borough Council declared a Climate Emergency and has joined a growing number of authorities that have adopted a carbon-neutral target.

By declaring a Climate Emergency, the Council is publicly prioritising this issue and acknowledging that a great effort must be made locally and nationally to reduce the effects of climate change.

Across the Council's services, all strategic decisions, budgets and approaches to planning decisions will be aligned with the goal of reducing carbon emissions. Spelthorne intends to accelerate its efforts by introducing greener buildings, energy, transport and investments and has already made excellent progress with the following actions:

- trial of electric refuse vehicles in spring 2021
- 40% reduction in energy usage at the Council offices
- launch of a new climate change taskforce
- installation of solar panels on several council buildings
- new electric vehicles and bicycles for council staff travelling between sites
- installation of additional electric vehicle charging points across the Borough
- planting of over 1,000 new trees in the Borough
- allocation of £1.2million in grants to make homes more energy efficient
- installation of low energy lighting at all Council premises
- planning application to build a new ultra-low-energy leisure centre
- adoption of a sustainable housing strategy
- management of parks and open spaces to encourage biodiversity
- introduction of a single-use plastics policy, and paperless Council meetings
- sourcing 70% of our electricity demand from zero carbon renewable generators by 2022



## Achievements and awards



Spelthorne Borough Council has achieved many awards in the last year. Sunbury Walled Garden and Staines, Sunbury and Ashford Cemeteries all received Green Flag and South & South East in Bloom Awards.



In March 2020 the Council won bronze for Efficiency and Effectiveness in the IESE Awards for its Root and Branch programme. The programme identifies efficiencies, savings and improvements to protect frontline services and, as part of this, the Council transformed the footprint of its offices in Knowle Green, converting the West Wing into 25 affordable homes which was awarded a Certificate of Excellence.



Spelthorne Leisure Centre has been awarded the Quest award which is designed specifically for leisure centres and examines the quality of service, customer care, marketing management and activity programmes available.



### EMPLOYER RECOGNITION SCHEME

2020 Silver Award holder

Find out more here: Defence Employer Recognition Scheme

The Council has been awarded Silver for the Defence Employer Recognition Scheme and is working towards Gold. The scheme encourages employers to support serving and ex-service personnel and inspire others to do the same. We are proud of our Armed Forces connections and pledge to support this community, and align our values with the Armed Forces Covenant.



The Council's IT department has been awarded the Cyber Essentials accreditation and continuous improvement award for address and street data.



For its 20th year our Legal Services team have received the Lexcel Legal Practice Quality Mark.

# Communications



Follow us on Social Media:



@spelthornebc



@spelthornebc



@spelthorneboroughcouncil



Spelthorne Borough Council



Sign up to the 'My Alerts' service  
[www.spelthorne.gov.uk/myalerts](http://www.spelthorne.gov.uk/myalerts)



Visit Spelthorne Borough Council's  
website [www.spelthorne.gov.uk](http://www.spelthorne.gov.uk)



Phone us on  
**01784 451499**



Sign up for the monthly electronic newsletter  
containing news, events, planning applications  
and more [www.spelthorne.gov.uk/enews](http://www.spelthorne.gov.uk/enews)

## Communications Dashboard

March 2020 - July 2021



**38,000** views  
to the Covid-19  
landing page

**1.54m** views to  
Spelthorne Borough  
Council website



**26** eNews  
publications sent to  
**44,000** residents



**1,580** posts  
**49k** engagements  
**249k** content clicks  
**31.2k** reactions  
**10.3k** comments



**1,433** Tweets  
**3.7k** engagements  
**2.8k** content clicks  
**1.3k** re-tweets



**945** posts  
**8.9k** engagements



**624** posts  
**1.7k** engagements  
**275** reshares



**149** news articles



**21** noticeboards  
updated fortnightly



**5** Bulletin  
magazines  
distributed to  
**45,000** households



Social media  
audience  
**up 38%** v in the  
same time period  
in 2019



@spelthornebc



@spelthornebc



@spelthorneboroughcouncil



## HELP AT HOME

“ It is like having  
a friend  
come round  
to help ”



Our Home Helps take pride in building relationships with the clients to ensure they feel safe and happy.

**Start as a client but end as a friend.**

Help at Home is your doorway into a world of advice and information for people aged 50+.

At Age UK Surrey we provide various services and activities all geared to making older people get the most out of later life. Our Social Activities will reopen in the summer, check our website for more information.

HOUSEWORK

SHOPPING

COMPANIONSHIP

AND MUCH MORE

All our home helps are comprehensively briefed, have access to PPE, maintain social distancing and are security checked.



01483 503414

[enquiries@ageuksurrey.org.uk](mailto:enquiries@ageuksurrey.org.uk)  
[www.ageuk.org.uk/surrey](http://www.ageuk.org.uk/surrey)

Charity No. 1036450

15B0721

**healthwatch**  
Surrey

Your feedback can help  
change local services  
for everyone



Have you, or someone you know, recently used an NHS or social care service in Surrey?

We would love to hear your experience, good or bad.

We share feedback with local health and social care decision makers and all experiences are shared anonymously. Your feedback could help change local services!

Contact us to share your experience or for information/advice about health or social care services.

We also have trained advocates offering free, independent support with NHS complaints.

Contact us:

[www.healthwatchsurrey.co.uk](http://www.healthwatchsurrey.co.uk)

Telephone: 0303 303 0023

SMS: 07592 787533



# Le FOYER

Explore Property Potential

## Sell, Rent, Buy or Invest?



To arrange a **FREE** valuation,  
please call us today on

**01784 775 370/71**

[info@lefoyerproperties.com](mailto:info@lefoyerproperties.com)



Le FOYER

Explore Property Potential  
Letting | Buying | Selling | Investment

P: +44 (0)1784 775370, +44 (0)1784 775371

E: [info@lefoyerproperties.com](mailto:info@lefoyerproperties.com)

[www.lefoyerproperties.com](http://www.lefoyerproperties.com)

A: 29 Woodthorpe Road, Ashford, Surrey TW15 2RP



## Meet the town centre manager

**Andy Willmott, Spelthorne Council's new town centre manager for Ashford, Shepperton and Sunbury, is looking forward to meeting and working with local businesses.**

As well as being a visible presence on the High Street, Andy holds weekly meets to give businesses the opportunity discuss any issues, concerns or suggestions. These take place at:

**Ashford** - Tarla Café & Grill  
Every Tuesday, 8.30 - 10am

**Shepperton** - Jamz Cafe and Bakery  
Every Wednesday, 8.30 - 10am

**Sunbury Cross** - Golden Grill Cafe  
Every Thursday, 8.30 - 10am

With a background working at Surrey Chambers of Commerce, running a Business Improvement District in Surrey and a small business owner himself, Andy looks forward to meeting you.



To confirm a specific time, contact Andy on **07939 244548** or email [a.willmott@spelthorne.gov.uk](mailto:a.willmott@spelthorne.gov.uk) or just come in for a chat – the first coffee is on Andy!

## Thanking local volunteers

**The work of 11 dedicated local volunteers was recognized at the Spelthorne Civic Awards Trust presentation ceremony in June.**

Between them, this year's award recipients have given almost 300 years of service to the Borough in support of a range of charities and community groups.

Cllr Colin Barnard, the Mayor of Spelthorne for 2020/21 who presented the awards, said: "The strong community spirit and increase in people volunteering during the Coronavirus pandemic is one of the few positives we have been able to take from the past year. These winners represent the best of this Borough as they have put the needs of others above their own. We know many good deeds go unnoticed, so if you know someone who has been serving their community, we urge you to let us know about them."

Colin Squire, Chair of the Civic Awards Trust, said: "The men and women honoured this year have given decades of service to help make our community a better place and, on behalf of the Civic Awards Trust, I commend them all for their hard work and dedication. We are fully aware that there are going to be

other dedicated volunteers out there whose work has gone unheralded so, if you do feel someone deserves the Civic Award, please get in touch by emailing [civicawards@gmail.com](mailto:civicawards@gmail.com)."

Many congratulations to the following:

### Civic Awards

**Jackie Browne** - Spelthorne Museum

**Nick Charalambous** - Work with young people

**Pamela Cole** - Spelthorne Archaeology and Local History Group

**Michael Coombs** - Academy Trust

**Gloria Hazell** - Spelthorne Museum

**Linda Marshall** - Spelthorne Rentstart

**Hugh Thomas** - Burway Rowing Club

**Brenda Vinson** - Fordbridge Day Centre

### Community Awards

**Gladys Boulton** - Patrol Crossing Keeper in Sunbury

**Murray Litvak** - Spelthorne Council's 'Members' Code of Conduct' Committee

### Letter of Commendation

**Frederick Wallin** - Founder of Spelthorne's 'Man in a Shed' workshop in Shepperton



You can watch the full award ceremony on Spelthorne Council's You Tube channel



# New affordable homes in Sunbury

**Spelthorne Council has completed the first phase of a project to convert a vacant office block into new homes in Green Street in Sunbury.**

The Benwell House development, which will be managed by Knowle Green Estates Ltd, the Council's housing delivery company, is providing 55 new homes. As part of the Council's commitment to provide more affordable homes, 27 of these will be reserved as affordable rented housing.

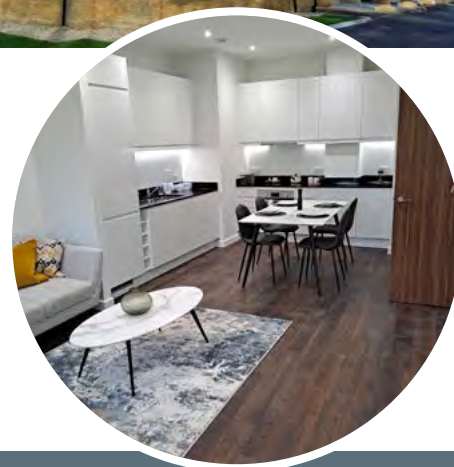
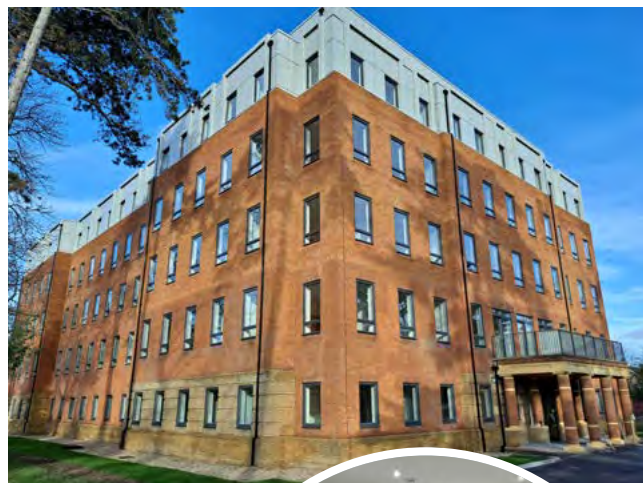
The development will provide a mix of studios and one or two bedroom accommodation. Residents will benefit from private parking, flexi studio, communal space and external landscaping. Each apartment has underfloor heating and high-quality

fitted kitchens.

The new homes have been designed with sustainability in mind and include electric vehicle charging points, LED lighting, whole house ventilation and efficient heating. Solar panels have also been installed which can generate 10% of the energy needed.

Now that the first phase is complete, a further second development is planned on the site, and it is intended that this will deliver at least 70% affordable homes for rent.

The Council has appointed Dexters in Hampton as letting agents for the private properties.



For more information, visit [www.knowlegreenestates.co.uk](http://www.knowlegreenestates.co.uk)

# New facilities for homeless people

**Spelthorne Council is pleased to announce that two new facilities for vulnerable residents will be opening soon.**

Located on Fordbridge Road in Ashford, Harper House will provide emergency accommodation for up



White House Hostel, Ashford



Harper House, Ashford

to 20 homeless families. It will offer a local temporary home which is safe, secure and provides the best opportunity for families to move on to settled accommodation. Previously the Council, like most authorities, had to rely on bed and breakfast accommodation to house families in these situations.

The development, which will open at the end of the summer, includes twenty self-contained apartments of various sizes, with two of the rooms accessible for wheelchairs. There is a garden to the rear, car parking, bicycle storage and an office from which an enhanced management and support service will be provided.

Also opening late summer, the White House Hostel on the Kingston Road in Ashford will provide specialist accommodation for single homeless people, particularly those with multiple or

complex needs. Generally, these are residents who are not able to access mainstream accommodation options and who would otherwise be placed in expensive nightly-paid accommodation without adequate support, or in the worst cases, sleeping rough.

The development will contain 27 en-suite rooms with shared kitchens, four self-contained studio flats, as well as outside space.

Both sites will be managed by social housing provider Metropolitan Thames Valley Housing (MTVH) and have dedicated on-site teams to support residents and work closely with the local community. A specialist housing management and resident support service at the White House will provide 24-hour on-site cover with staff who have extensive experience in working with residents to create settled futures.

For more information about Harper House and the White House visit [www.spelthorne.gov.uk/harperhouse](http://www.spelthorne.gov.uk/harperhouse) and [www.spelthorne.gov.uk/whitehouse](http://www.spelthorne.gov.uk/whitehouse)

# A £1,000 fine is no laughing matter



## Possession of nitrous oxide within Spelthorne is now prohibited\*

Under *The Anti-Social Behaviour, Crime and Policing Act 2014, Part 4, Section 59*, a Public Space Protection Order is in place.

**The recreational misuse of nitrous oxide can lead to suffocation, nerve damage and memory loss and any breach of the above order will constitute an offence and liable to a fine of up to £1,000.**

\*Other than for lawful purposes i.e. catering

    [www.spelthorne.gov.uk](http://www.spelthorne.gov.uk)





## Tackling 'legal highs'

**Spelthorne Borough Council has put in place a Public Spaces Protection Order (PSPO) concerning the use of New Psychoactive Substances (NPS). The Order applies to all public land within the Borough and prevents the use of any psychoactive substance.**

The Council launched a public consultation in January, following a Motion that was agreed last October which received many responses on the issue. 97% of residents indicated that they were in favour of a PSPO and the concerns raised in the consultation included intimidation, noise, abuse, and littering.

Nitrous Oxide, or 'laughing gas', is a well-known example of an NPS and Spelthorne Council receives many complaints from residents concerned about the large quantity of silver canisters discarded in streets and open spaces.

Cllr Amar Brar, Chair of the Neighbourhood Services Committee, said: "We have seen a considerable increase over the last two to three years in the use of Nitrous Oxide canisters. There are real concerns from residents about the risks of this drug and the gateway effect to other dangerous substances. This Council wants to alleviate the impacts of this drug by educating users and provide a safe community for all residents in Spelthorne. We know that this PSPO will be very much welcomed and we will be working with stakeholders to ensure the message is communicated loud and clear."

Nitrous Oxide has many dangerous side effects including; dizziness, vitamin B12 deficiency, nerve damage, fainting, strokes, unconsciousness and suffocation from lack of oxygen.

Driving when high is dangerous and illegal and if you are caught under the influence you will receive a heavy fine, driving ban or prison sentence.

For more information about Nitrous Oxide, visit [www.talktofrank.com/drug/nitrous\\_oxide](http://www.talktofrank.com/drug/nitrous_oxide) or call 0300 123 6600.

## Switch off your engine

**Drivers often leave their vehicle engines running whilst stationary on congested roads, at traffic lights, and waiting outside schools and businesses.**

The emissions from petrol and diesel engines contain nitrogen dioxide and particulates which are linked to asthma and other respiratory problems, as well as carbon dioxide which contributes to climate change. Leaving the engine running whilst stationary can produce double the emissions of a car in motion, and the fumes linger nearby.

If you need to stop for longer than a minute, it's better to turn your engine off. For vehicles less than 10 years



old, leaving the engine running uses more fuel than turning it off and on again. By simply turning your engine off when stationary, you can help to improve local air quality and reduce greenhouse gas emissions.

## Beat the scammers

**Every year the British public loses billions of pounds to fraudsters who bombard us with online, mail, door-to-door and telephone scams.**

People from all walks of life are affected by this crime, but there are steps you can take to help prevent you being caught-out in the first place. Remember these 10 golden rules to help you beat the scammers.

1. Be suspicious of all 'too good to be true' offers and deals. There are no get-rich-quick schemes
2. Do not agree to offers or deals immediately. Insist on time to obtain independent/legal advice before making a decision
3. Do not hand over money or sign anything until you have checked the credentials of the company or individual
4. Never send money to anyone you don't know or trust, whether in the UK or abroad, or use methods

of payment that you are not comfortable with

5. Never give banking or personal details to anyone you don't know or trust. This information is valuable so make sure you protect it
6. Always log on to a website directly rather than clicking on links provided in an email
7. Do not rely solely on glowing testimonials: find solid independent evidence of a company's success
8. Always get independent/legal advice if an offer involves money, time or commitment
9. If you spot a scam or have been scammed, report it and get help. Contact ActionFraud on 0300 123 2040 or visit [www.actionfraud.police.uk](http://www.actionfraud.police.uk). Contact the Police if the suspect is known or still in the area
10. Do not be embarrassed to report a scam. Because the scammers are cunning and clever there is no shame in being deceived. By reporting you will make it more difficult for them to deceive others

If you want to stay on top of scams and up to date about crime prevention advice, visit the Surrey Police website at [www.surrey.police.uk](http://www.surrey.police.uk)



# STAINES PREPARATORY SCHOOL

Educating today's children for the challenges of tomorrow

IAPS | FOUNDED 1935 | CO-ED | AGES 3 - 11



**An outstanding education in the heart of Staines-upon-Thames**  
**Book your personal tour during the summer term today**



Teacher Led Pre-School Nursery



On-Site Forest School



State of the Art Facilities

**Rated "Excellent" in all areas, ISI December 2019**

Discover more @StainesPrep



[www.stainesprep.co.uk](http://www.stainesprep.co.uk)



With Lockdown Easing...  
TREAT YOURSELF TO THE BEAUTIFUL,  
**REVITALISED YOU!**

**FREE PHONE CONSULTATION!**

## Body Contouring:

for 1 Area - £90 (was £150)

or 2 Areas - £130 (was £200)

### SUMMER IS COMING!

The time is now for some much needed self-care. Treat yourself to a Body Contouring session with us at Facial Body Sculpting by Monika and realise results after just a few sessions!

- The best non-surgical, safe and effective way to eliminate stubborn belly jiggle
- Enjoy quick, pain-free treatments without need for recovery time
- Target stubborn areas: stomach, back, thighs, bingo wings
- Feel more confident than ever before!

Contact Monika today for more details and book your consultation.



MONIKA@FACIALBODYSCULPTING.CO.UK | 07990 088137 | @FACIALBODYSCULPTINGBYMONIKA

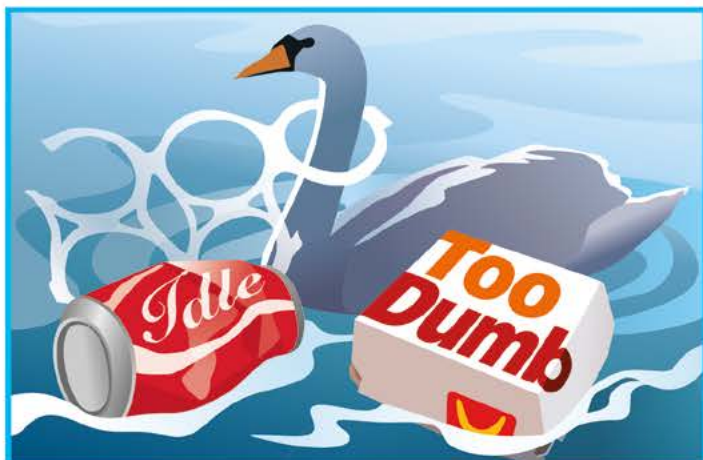


# RESPECT OUR BOROUGH

Please find a bin or take your litter home with you



**NOT IN OUR PARKS**



**NOT IN OUR RIVERS**



**NOT ON OUR ROADS**



**NOT FOR OUR WILDLIFE**



**NOT ON OUR STREETS**



**NOT IN OUR PLAYGROUNDS**

**#NORUBBISH EXCUSES**



[www.spelthorne.gov.uk](http://www.spelthorne.gov.uk)





**SAS**  
Accountants Ltd

Short and Sons Accountants Ltd  
T: 01784 390021  
M: 07481 479933  
www.shortandsons.co.uk  
sales@shortandsons.co.uk



## For Small Business, Self-Employment & Landlords

Over 50  
x 5 Star reviews  
on Google



01784 390021 T or 07481 479933 M  
Email: sales@shortandsons.co.uk  
WhatsApp: 07481 479933  
www.shortandsons.co.uk

*Easy Switching Process, call today!*

# YOUR LOCAL ELECTRICIAN

DO YOU WANT A QUICK RESPONSE  
NO JOB TOO BIG OR TOO SMALL?

WHEN YOU NEED AN ELECTRICAL FAULT/  
PROBLEM SOLVED, WE WILL SOLVE IT FOR  
YOU. WE'RE WEARING FULL COVID PPE -  
BE SAFE IN YOUR HOME AND AT WORK.

CONTACT **RICHARD** FOR A FREE SURVEY,  
FREE CONSULTATION, FREE ESTIMATE.

FOR YOUR LOCAL QUALIFIED  
ELECTRICIAN, NICEIC APPROVED.

**CALL RICHARD**  
**01784849181 OR 07875958912**

www.electricianashfordmiddlesex.com or

www.facebook.com/ElectricianTWarea



*Driveway  
Specialists*



  
**Laleham Landscapes**  
*The Complete Garden Service*

- Artificial Lawn,
- Construction
- Design
- Decking & Patios
- Driveways
- Fencing
- Maintenance
- Paving & Brickwork
- Resin Bonding
- Tree Surgery
- Turfing - Ground Works & Lawn Care



## Revive UR Drive

*The Driveway Refurbishment Experts*  
*Driveways, Patios and Paths Expertly Installed*  
*or Professionally Restored, Cleaned and Sealed*

**01784 255 094**

**07961 523 235**



**sales@lalehamlandscapes.co.uk**  
**www.lalehamlandscapes.co.uk**





# Recycling rejects

**There are a few items which our refuse teams often find in recycling bins, which should in fact go into the rubbish.**

This is because they cannot be processed into a reusable form or their parts are difficult to separate.

## Pizza boxes

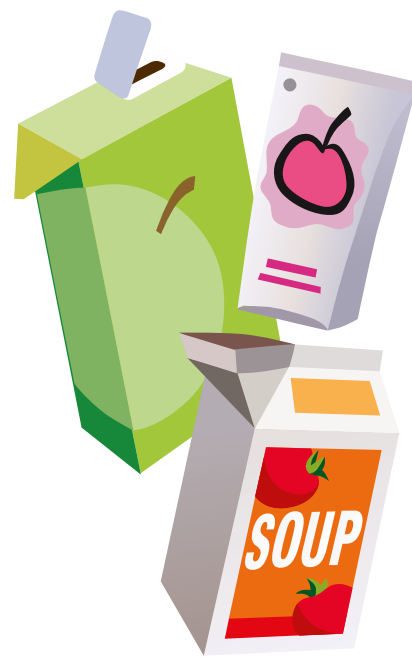


The card on pizza boxes tends to get greasy and have bits of uneaten food

stuck to it. Paper doesn't get heated when it's recycled so the grease and oil doesn't burn off and spreads through the whole batch.

## Takeaway drinks cups

Takeaway cups are made from card and a plastic film, laminated together. The plastic is very hard to separate and can clog up the recycling machinery.



## Cartons and tetra paks

Food and drink cartons are made from card, metal foil and plastic film, all laminated together. It is very hard and expensive to separate them again.

To check if a particular item can be recycled in Spelthorne, visit [www.spelthorne.gov.uk/recycling\\_search](http://www.spelthorne.gov.uk/recycling_search) or call 01784 446411

# Love your green spaces



**We have seen a high number of visitors to our parks in the past year and it is wonderful to see people enjoying these areas.**

Our green and open spaces provide opportunity for physical activity, leisure and sport and contemplation for us all. Residents, workers and visitors alike value these areas immensely.

These green areas of the Borough also provide an important home to a rich array of wildlife and plants, and each species plays their own special role. For example, when a butterfly lays eggs on a leaf, the caterpillars will

become food for nesting birds, and wildflowers attract pollinating insects such as bees.

It's important that you don't disturb the natural environment by picking flowers, plants, fruit or mushrooms. Please always take your rubbish home or use the nearest bin as litter is very harmful for wildlife and pets. Fires and barbeques are not permitted as they pose a fire risk.

Parks are a great place to exercise and play sports, but please use the designated areas for ball games – and no golf please! You are welcome to ride your bicycle on the cycle paths.

We thank you for following these guidelines and helping us create a beautiful environment where the natural world can thrive.



## Dig it

The popularity of allotments has increased in recent years with more and more people becoming interested in growing their own fresh produce and escaping the everyday stresses of life.

Spelthorne Council manages 10 allotment sites around the Borough, so get in touch if you would like more information about the cost and availability of allotments near you.

Bylaws are available to read at each of our green spaces. Call 01784 451499 if you would like more information.

Visit [www.spelthorne.gov.uk/allotments](http://www.spelthorne.gov.uk/allotments) or call 01784 451499



# HOMEOWNERS WHO SOLD WITH EWEMOVE IN STAINES, ASHFORD, SHEPPERTON & SUNBURY...



Found a buyer in  
**26**  
days\*



Achieved  
**99.3%**  
of asking price\*



Rated the service  
**5 STAR**  
on Trustpilot

Contact us today to book your  
**FREE** home valuation!

**Zoe Foxman & Aaron Jameson**  
Branch Directors



\*Average - Stats from Ewerekal Property Management System (Jan - May 2021)

Book your **FREE** valuation appointment. Select a date and time  
online at: **TWValue.co.uk** or call (24/7): **01784 770 628**

EweMove respects any existing sole agency agreement already in place with another agent.