



Special edition: Spelthorne Local Plan Consultation 8 page insert

4 Tackling
rough sleeping

9 Rubbish and
recycling calendar

25 Win leisure centre
membership for two!

WORRIED OR CONCERNED ABOUT DRUGS, ALCOHOL OR MENTAL WELLBEING?

Emotional support, information and advice for your mental wellbeing, drug and alcohol concerns. Our confidential service also helps if you are worried about family or friends.

- We are totally non-judgemental and understanding
- We are always available to listen to you, whatever you're going through
- We explain the options and services available we can refer you to appropriate treatment

Call our 24/7 confidential helpline

0808 802 5000

www.SDAC-helpline.co.uk

SMS 07537 432411 For the hard of hearing



WE CAN REFER YOU TO TREATMENT SERVICES



Care visits at home

We care passionately

For many people the questions about care don't arise until suddenly, there is a need.

Home care with Bluebird Care can be anything from a 30 minute care visit to 24 hours live in care, supporting you to remain as independent as possible, living the lifestyle you choose.

Call and talk to one of our friendly professionals today:



01932 567593

elmbridge@bluebirdcare.co.uk

bluebirdcare.co.uk

[/elmbridge-runnymede](https://elmbridge-runnymede)

We are independently regulated



WELCOME TO SPS

Educating today's children for the challenges of tomorrow



PRE-PREP SCHOOL
NURSERY & RECEPTION



LOWER SCHOOL
YEARS 1 & 2



UPPER SCHOOL
YEARS 3 - 6

A nurturing school for children from rising 3 to 11 years
Excellent support and preparation for 11+ and senior school exams

Wrap around care from 7:30am - 6pm

Fees include lunches, day & UK residential trips

Contact us on admissions@stainesprep.co.uk to arrange your personal tour

Staines Preparatory School
 @stainesprep
 stainesprep

01784 450909

www.stainesprep.co.uk

3 Gresham Road, Staines-upon-Thames, TW18 2BT

Letter from the Leader



Dear Residents,

This is a special edition of the Bulletin which includes eight pages on the Local Plan consultation which sets out the policies that will guide development in the Borough for the next 15 years. It's a very important piece of work which will shape Spelthorne for many years to come so we want to hear your views. Please take the time to read more details on pages 13-20.

We have been working hard this year to improve housing for the Borough's more vulnerable residents and I am pleased that we have the go-ahead for a hostel for single homeless people to be built on the Kingston Road in Ashford. The facility will provide modern purpose-built accommodation with 24 hour cover and space for training and education. In addition, we are rebuilding Harper House on Fordbridge Road in Ashford to provide emergency accommodation for up to 20 families.

I would like to congratulate all the finalists and winners of the Spelthorne Means Business Awards. The quality of this year's entries reflected the strength and diversity of our business community and it's very easy to see why we are consistently named as one of the best places to do business.

It just remains for me to end by wishing everyone a very happy Christmas. However you chose to spend it this year, I hope the festive season is a peaceful time and you have the chance to spend it with friends or loved ones.

Cllr Ian Harvey, Leader of the Council

✉ cllr.harvey@spelthorne.gov.uk

Message from the Mayor



Season's greetings!

Hard to believe winter is already upon us. As well as representing our lovely Borough across Surrey, my consort Andrew and I have been busy spending time in Spelthorne with all the fantastic residents, volunteers, schools and churches that make this such a great community.

We must remember that there are people in and around the Borough who are not as fortunate as us. The Christmas period is a time of celebration, but also of generosity and giving, and I would urge any of you with a little time on your hands to offer your help to one of our voluntary groups, community centres or places of worship, if you can. I am sure even one or two hours' help would be gratefully received.

However you spend this special season, I do hope that it is a time of joy, love, kindness and hope for each and every one of you. We will be visiting all our community centres over the period and look forward to meeting some of you there.

Don't forget - I am here as Mayor for everyone in our community so if I can help in any way to promote or support your event, please do get in touch. You can find details of my fund raising events on our website at www.spelthorne.gov.uk/mayor. All the money raised this year will go to Eikon and Midas Plus, as well as to some smaller charities. Wishing you all a wonderful Christmas time!

Cllr Mary Madams, Mayor of Spelthorne

✉ mayor@spelthorne.gov.uk ☎ **01784 446275**

🌐 www.spelthorne.gov.uk

Contents

News	3
The latest news from around the Borough	
Environment	9
Rubbish and recycling calendar, festive waste	
Local Plan	13
Special edition: Policies and Sites consultation	
Economic Development	23
Spelthorne Means Business Awards 2019	
Leisure and Wellbeing	24
What's on this Christmas, sports and arts	
Independent Living	26
Community centres and getting around	
Community	27
Community news and updates	

Contacts us:

- 🌐 www.spelthorne.gov.uk
- ☎ **01784 451499**
- ✉ Spelthorne Borough Council, Council Offices, Knowle Green, Staines-upon-Thames, TW18 1XB

Follow us on social media:

- 📘 @spelthornebc
- 🐦 @spelthornebc
- 📷 @spelthorneboroughcouncil
- 📺 Spelthorne Borough Council

📄 **Sign up to our monthly newsletter:**
www.spelthorne.gov.uk/enews

👤 **Sign up to the 'My Alerts' service:**
www.spelthorne.gov.uk/myalerts

Bulletin enquiries: 01784 446297 / 01784 444260
Editor: Jennifer Medcraft / Louise King
Design: Tanya Allen
Cover: Spelthorne Local Plan

Advertising enquiries: Send an email to frontline@frontlinedesigners.co.uk or call **01342 312570**.
Spelthorne Borough Council does not accept responsibility for, or endorse, any products or services offered by advertisers.

The Bulletin is available in large print and on CD. Please email I.king@spelthorne.gov.uk or call 01784 444260.

The Bulletin is our community magazine produced by Spelthorne Borough Council, delivered free to every home in Spelthorne. Circulation 45,000.

Tackling rough sleeping in Spelthorne

Rough sleeping is a complex issue and every case is unique. Loss of employment, relationship breakdown, domestic violence, leaving the care system, mental health problems and alcohol or substance dependency are just some of the reasons why people can find themselves without a place to live. Spelthorne Borough Council works alongside people in this situation, helping them to find safe accommodation, get their lives back on track and focus on a positive future.

Rough sleeping isn't simply about those sleeping on the streets, in doorways and on park benches. Many rough sleepers are not seen or heard but are nevertheless homeless, sleeping in cars or on friends' sofas. Although the number of rough sleepers tends to fluctuate in Spelthorne, it is thought that around 10 people are sleeping rough in the Borough at any one time.

Earlier this year, Spelthorne Council successfully bid for the Government's Rough Sleeper Initiative funding and appointed a Rough Sleeper Coordinator and Outreach Officer to help homeless people who are on the streets find suitable accommodation. As well as being helped to find suitable housing, clients are introduced to other agencies that can work with them to tackle other issues which may have contributed to them becoming homeless. The Council also provides practical support to get people back into employment by providing items like a mobile phone or paying for a haircut or train ticket for an interview.



Whilst not all rough sleepers accept our offer of assistance and support, the Council has been achieving excellent results and since July this year has found settled accommodation for 11 rough sleepers. Once accommodation has been found, we also continue to offer guidance to ensure individuals do not end up rough sleeping again. Building a good relationship with the client and having a flexible approach is vital as everyone faces different obstacles.

In September, the Council received the go-ahead to build a hostel for up to 27 single homeless people on the Kingston Road in Ashford. The facility, which will be completed in 2021, will provide modern purpose-built accommodation with 24 hour cover and space for training and education. It will be operated by the Salvation Army which has a wealth of experience in managing supported housing facilities. Plans are also underway to rebuild Harper House on Fordbridge Road in Ashford to provide emergency accommodation for up to 20 families. The target for completion is also early 2021.

We are currently reviewing our housing strategy for the next five years which will include our approach to preventing homelessness and tackling rough sleeping in Spelthorne. We are aiming for our new Homelessness Strategy Framework to go to public consultation towards the end of this year and more information will be available on this soon.

If you are concerned about a person who may be sleeping rough, please report this to Spelthorne Council by emailing Housingadvice@spelthorne.gov.uk or calling **01784 446 380**. Alternatively visit the StreetLink website at www.streetlink.org.uk



Protect your family and make a will

Single Will	£170	Mirror Will	£300
Lasting Power of Attorney	£375	Trusts from	£475



Prices include home visit consultation
Daytime - Evening - Weekend
appointments are available

Call us today
0208 061 9045
www.fsestateplanning.com
Fully Insured | Qualified Legal Team | Local to Spelthorne

Ofsted Registered – We are now
accepting childcare vouchers



Unlock your child's potential

with our expertly led singing, dancing
and acting classes for 4 - 18 year olds.

NOW RECRUITING

Find out more today:

W stagecoach.co.uk/staines

@ staines@stagecoach.co.uk

07802 800633

STAGECOACH STAINES
THOMAS KNYVETT COLLEGE,
STANWELL RD, STANWELL,
STAINES TW15 3DU

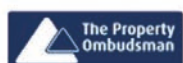


Creative Courage For Life®

Stagecoach Performing Arts is the trading name of Stagecoach Theatre Arts Limited. Stagecoach Theatre Arts schools are operated under franchise and are independently owned by their Principals. Stagecoach and Creative Courage For Life are registered trademarks of Stagecoach Theatre Arts Limited.



**SALES AND
LETTINGS**
INDEPENDENTLY OWNED
LOCAL EXPERIENCED STAFF
HONEST ADVICE
SERVICE TAILORED TO YOUR NEEDS
COMPETITIVE FEES
FREE VALUATION
RING TODAY!



15 ASHTREE COURT, FELTHAM HILL ROAD, ASHFORD, MIDDLESEX TW15 2BU

TEL: 01784 244777 EMAIL: info@jdhallestateagents.co.uk



Spelthorne Junior Citizen

During September over 1,000 year 6 pupils from 20 Spelthorne primary schools attended Spelthorne Junior Citizen, a one-day event designed to help children stay safe and learn important life skills.

The children took part in interactive workshops to learn about staying safe and being good citizens. Topics covered included fire safety, first aid, recycling, stranger danger, healthy eating, respecting the railways and water safety.

The Mayor said: "Junior Citizen provides an excellent way of equipping young people with

important life skills and the knowledge and confidence they need to deal with potentially dangerous situations. The workshops are specifically designed to get the information across in a way that is interesting and relevant to the children. We had excellent feedback this year and the children had a lot of fun."

Junior Citizen has been running for over ten years and is organised by Spelthorne Borough Council with support from the Surrey Police and Crime Commissioner, Surrey Fire and Rescue, Surrey Police, RNLI, the NHS, South Western Railway and St John Ambulance.



Spelthorne Civic Award Trust

Spelthorne Civic Awards

Do you know someone who should be recognised for dedicated voluntary service in the Borough of Spelthorne?

The Spelthorne Civic Award Trust is now in its 36th year having been founded in 1983 by Mr Alf Goddard MBE to acknowledge the work of local Spelthorne residents who devote their time to voluntary service in the Borough. The object of the Trust is to recognise long

term voluntary effort by awarding an honour to those nominated and, since 1983, 420 civic awards have been given.

We would like to invite local residents and voluntary organisations to nominate persons known to them who have given a minimum of at least 12 years' service so that the Trustees can consider them for an award. Candidates do not have to live in the Borough but the work they do should be of benefit to those residing in Spelthorne.

Nomination forms and further details are available from the Trust Secretary David Martin, email civicawards@gmail.com
Closing date for nominations:
31 January 2020

Response to Heathrow's consultation

Heathrow's latest consultation closed on 13 September and Spelthorne Council submitted a comprehensive response detailing the Council's views on the expansion proposals.

Historically, the Council has supported Heathrow and the principle of a new North West runway, due to the wider economic benefits it brings to the Borough. However, it has always been very clear that this cannot be at the expense of local communities or the environment and in its response to Heathrow the Council confirmed that it will only continue to support expansion if the following conditions are met:

- The sixteen requirements recommended by the Council's Overview and Scrutiny Committee are met
- The communities which are most impacted by the expansion plans are properly compensated through the Wider Property Offer Zone scheme
- The 'Heathrow West' proposal be explored to ascertain if this is a viable proposition

The Council also expressed disappointment that a lot of information and detail was missing from the consultation materials, making it impossible to comment on a number of important aspects.



To view the Council's full response and learn more about the sixteen requirements mentioned above, visit www.spelthorne.gov.uk/finalconsultation

New housing at Brooklands College

Plans for new housing at the former Brooklands College site in Ashford are moving ahead.

A2Dominion will be providing a range of accommodation options for local people, across a number of phases over the next four years.

Affordable rented: 48 properties

These properties will be rented to local residents from the Council's Housing Register, at least 20% below market rents. The first properties will be available in



early 2020 and will be available for Housing Register applicants at searchmoves.org.uk.

Shared ownership: 236 properties

There will be a collection of one and two bedroom apartments, and three bedroom houses through FABRICA by A2Dominion. These properties are part-buy / part-rent, and priority will be given to purchasers who live or work in Spelthorne. The first

properties will be available in early 2020. To register your interest, call 0203 944 8798 or visit fabrica.co.uk/contact-us.

Private rent: 73 properties

These properties will be rented at market rents through the general rental market. The first properties are anticipated to be ready in 2021 and will be advertised at a2dominion.co.uk/private-rent.

My Alerts

Would you like to receive rubbish and recycling reminders or be informed if one of your neighbours submits a planning application? Sign up to Spelthorne Council's My Alerts service to receive regular emails with information on these and other topics including job vacancies, events and news.

Stay up to date with what's going on in your area!



My Alerts

To register visit www.spelthorne.gov.uk/myalerts

Armed Forces Task Group

The Council has established an Armed Forces Task Group under the Chairmanship of Cllr Robin Sider. This group will have representation from the Council, other public bodies and the armed forces charities in Spelthorne. Its purpose is to coordinate the support to veterans and be a focus for commemoration activity such as the forthcoming VE Day 75 bank holiday on 8 May 2020.

If you have any interest in these matters, or feel that you have something to offer to this work then please contact Cllr Robin Sider.

If you are interested in Spelthorne's Armed Forces Task Group, please email cllr.sider@spelthorne.gov.uk

Wellbeing buddies required

Amigo supports individuals who are recovering from mental ill health by helping them to make connections with the local community and improve their confidence and motivation.

We are recruiting volunteers to help clients attend community activities on weekdays, in the evenings and at the weekend. Full training is provided and expenses are covered.

To find out more, email buddy@voluntarysupport.org.uk or call 01276 707565

Make your vote count on 12 December

A General Election has been called for Thursday 12 December 2019. Polling stations will be open from 7am - 10pm.

For more details visit www.spelthorne.gov.uk/generalelection, email electoral.services@spelthorne.gov.uk or call 01784 444218



Applying for settled status

If you're an EU, EEA or Swiss citizen, you and your family can apply to the EU Settlement Scheme to continue living in the UK.

Visit www.gov.uk/eusettledstatus for more details



*Driveway
Specialists*



Laleham Landscapes

The Complete Garden Service

- Artificial Lawn,
- Construction
- Design
- Decking & Patios
- Driveways
- Fencing
- Maintenance
- Paving & Brickwork
- Resin Bonding
- Tree Surgery
- Turfing - Ground Works & Lawn Care



Revive UR Drive

*The Driveway Refurbishment Experts
Driveways, Patios and Paths Expertly Installed
or Professionally Restored, Cleaned and Sealed*

01784 255 094

07961 523 235



sales@lalehamlandscapes.co.uk
www.lalehamlandscapes.co.uk



Riser Recliners

Matching
suites
available

Walking Aids

Scoters



Walkers
from
£64.99



Cosyfeet
extra roomy

Footwear



Extra
Wide



Great
Variety

Clearwell mobility



Your local mobility experts

Visit your local Clearwell showroom today!

Staines-upon-Thames

11-17 Kingston Road,
Staines, TW18 4QX

01784 44 00 44



View our full range online at:
www.clearwellmobility.co.uk

Post this coupon for your
FREE 60 Page Brochure

Name
Address

Email

Post to: FREEPOST CLEARWELL MOBILITY



SPT10

Rubbish and recycling collection calendar 2020

All bins must be kerbside by 6am, with the handles facing the road on your collection day.

The calendar below shows which week your rubbish and recycling are collected. Food waste, textiles and small electricals are collected every week on your usual collection day.

January

Mon	Tue	Wed	Thu	Fri	Sat	Sun
		1	2	3	4	5
6	7	8	9	10	11	12
13	14	15	16	17	18	19
20	21	22	23	24	25	26
27	28	29	30	31		

February

Mon	Tue	Wed	Thu	Fri	Sat	Sun
					1	2
3	4	5	6	7	8	9
10	11	12	13	14	15	16
17	18	19	20	21	22	23
24	25	26	27	28	29	

March

Mon	Tue	Wed	Thu	Fri	Sat	Sun
						1
2	3	4	5	6	7	8
9	10	11	12	13	14	15
16	17	18	19	20	21	22
23	24	25	26	27	28	29
30	31					

April

Mon	Tue	Wed	Thu	Fri	Sat	Sun
		1	2	3	4	5
6	7	8	9	10	11	12
13	14	15	16	17	18	19
20	21	22	23	24	25	26
27	28	29	30			

May

Mon	Tue	Wed	Thu	Fri	Sat	Sun
				1	2	3
4	5	6	7	8	9	10
11	12	13	14	15	16	17
18	19	20	21	22	23	24
25	26	27	28	29	30	31

June

Mon	Tue	Wed	Thu	Fri	Sat	Sun
1	2	3	4	5	6	7
8	9	10	11	12	13	14
15	16	17	18	19	20	21
22	23	24	25	26	27	28
29	30					

July

Mon	Tue	Wed	Thu	Fri	Sat	Sun
		1	2	3	4	5
6	7	8	9	10	11	12
13	14	15	16	17	18	19
20	21	22	23	24	25	26
27	28	29	30	31		

August

Mon	Tue	Wed	Thu	Fri	Sat	Sun
					1	2
3	4	5	6	7	8	9
10	11	12	13	14	15	16
17	18	19	20	21	22	23
24	25	26	27	28	29	30
31						

September

Mon	Tue	Wed	Thu	Fri	Sat	Sun
	1	2	3	4	5	6
7	8	9	10	11	12	13
14	15	16	17	18	19	20
21	22	23	24	25	26	27
28	29	30				

October

Mon	Tue	Wed	Thu	Fri	Sat	Sun
			1	2	3	4
5	6	7	8	9	10	11
12	13	14	15	16	17	18
19	20	21	22	23	24	25
26	27	28	29	30	31	

November

Mon	Tue	Wed	Thu	Fri	Sat	Sun
						1
2	3	4	5	6	7	8
9	10	11	12	13	14	15
16	17	18	19	20	21	22
23	24	25	26	27	28	29
30						

December

Mon	Tue	Wed	Thu	Fri	Sat	Sun
	1	2	3	4	5	6
7	8	9	10	11	12	13
14	15	16	17	18	19	20
21	22	23	24	25	26	27
28	29	30	31			



Rubbish



Recycling



Christmas and New Year collections: Any changes will be published separately in the winter edition of the Bulletin and on our website.

Garden Waste:

If you are part of the alternate weekly garden waste scheme visit **my.spelthorne.gov.uk** to check when your next collection will be. This is a paid for service.



For more details, please visit
www.spelthorne.gov.uk/kerbsidecollections, email
neighbourhoodservices@spelthorne.gov.uk or call 01784 451499

Changes to Christmas rubbish and recycling collections

Collection	Scheduled collection day	➡	Revised collection day
Recycling	Monday 23 December	➡	Normal collection
	Tuesday 24 December	➡	Normal collection
	Wednesday 25 December	➡	Friday 27 December
	Thursday 26 December	➡	Saturday 28 December
	Friday 27 December	➡	Sunday 29 December
Rubbish	Monday 30 December	➡	Normal collection
	Tuesday 31 December	➡	Normal collection
	Wednesday 1 January 2020	➡	Thursday 2 January 2020
	Thursday 2 January 2020	➡	Friday 3 January 2020
	Friday 3 January 2020	➡	Saturday 4 January 2020
Recycling	Monday 6 January 2020	➡	Back to normal

Garden Waste:

Garden waste collections stop from 23 December - 31 January 2020. For more details check your garden waste calendar or visit my.spelthorne.gov.uk

For more information, please email customer.services@spelthorne.gov.uk or call Customer Services on **01784 451499**

A greener cleaner Borough

One of Spelthorne Council’s corporate priorities is providing a clean and safe environment for its residents and businesses. The Council recognises that it is essential that Local Authorities do all they can to help tackle climate change and that we must continue to demand more of ourselves to achieve real change for future generations.

Building new homes which produce renewable energy, installing solar



panel installations at our community centres and introducing more electric vehicle charging points are just some of the Council’s recent environmental achievements. We also:

- Offer kerbside collections of mixed recycling, food waste, electrical items and textiles
- Achieved a recycling rate of 48%
- Rolled-out schemes to help residents make their homes more energy efficient
- Introduced a policy to reduce the use of single-use plastics
- Issued over 73 fixed penalty notices for littering and fly-tipping since January
- Planted almost 1000 trees

More details can be found at www.spelthorne.gov.uk/annualreport



Reducing single-use plastics

Spelthorne Council has made a commitment to reduce the use of single-use plastics across its operations and services and is working towards eventually eliminating their use altogether. We have developed an action plan and policy for Spelthorne which sits alongside a wider Surrey strategy which we fully support.

For more information visit www.spelthorne.gov.uk/sup, email environment@spelthorne.gov.uk or call **01784 446411**

Remember, you can't recycle the following items:

- Polystyrene
- Plastic bags
- Nappies
- Black plastic food trays
- Thin plastics (such as cling film or crisp packets)
- Hard plastics
- Tetra pak juice cartons



These items will cause your recycling to be rejected at the sorting facility and it has to be incinerated.

Festive waste and recycling

The Christmas period can be a time when we make a lot more waste and rubbish than at other times of year - parties, presents, shopping, they all add up and generate mountains of packaging, boxes, cards, tinsel, trees and leftovers that all need to be thrown away. Somewhere. But where?

Real Christmas trees

We collect your real Christmas trees for free from 6 -17 January. Simply remove all the decorations and leave the tree out with your bins on your rubbish or recycling collection day. Otherwise you can take your tree to the Community Recycling Centre in Shepperton or one of the following drop-off points:

- **Fordbridge Park, Ashford**
- **Manor Park, Shepperton**
- **Old Bathing Station, Fordbridge Road, Sunbury**

Large cardboard boxes

We all love presents that come in big boxes, sometimes the box is the best bit! But what to do with them afterwards? They're big, bulky and take up loads of room. The best option is to flatten them and put them in your recycling bin. If it won't fit in your bin you can put the flattened cardboard next to your bin on collection day but make sure it's not raining as we can't accept wet card.



Leftover festive food

For all your festive food leftovers, make use of the weekly food collection service. Place your food waste in a plastic bag (any bag other than a black bin liner is good) and place it in your green outdoor caddy with your other bins on collection day. If you don't have a food waste bin, you can pick one up from the Council Offices in Knowle Green or our Depot on the Kingston Road.



Wrapping paper

It's paper, right? So it should all go in the recycling? Well not always. A lot of wrapping paper is actually plastic or has metal foil or glitter on it that can't go into the recycling. If there's no foil or glitter and you're still unsure if it's paper or not, try the scrunch test. Scrunch it up, if it stays scrunched and doesn't spring back then it's paper and can be recycled. If it springs back then it's foil or plastic and needs to go into the rubbish bin.



Extra recycling

If you have more recycling than can fit into your recycling bin you can take it to your local Bring Site to recycle or to the Community Recycling Centre in Shepperton. You can also recycle unwanted clothes and textiles at the Bring Sites as well as small electrical items and books. To find your nearest site and what can be recycled there visit www.spelthorne.gov.uk/bringsites



Keep this number handy

01784 849181

Your local electrician

Do you want a quick response and a reliable service?

No job too big or too small. When you need an electrical problem solved, we will solve it for you. Be safe in your home and at work.

Contact Richard for a free survey, free consultation and free estimate.

For your local qualified electrician, call Richard.

email: www.electricaltt.com
or www.facebook.com/ElectricianTWarea



I WANT AN ENERGY SYSTEM FIT FOR BRITAIN'S FUTURE

Smart meters will help us upgrade to a smart grid fit for the 21st century.

I WANT A SMART METER
Search: **I want a smart meter** Call: **0300 131 7777**

Calls to this number from UK landlines and mobiles are charged at the standard rate (i.e. same rate as calls to 01 and 02 numbers), and may be included in your usual call allowance. Please check with your provider.



Leaks & Bursts, Boiler breakdowns, servicing & installs. Toilets & taps. Radiators & pumps. Tanks & overflows. Baths & showers.

- ✓ Free estimates
- ✓ Fixed upfront prices
- ✓ Senior citizen discounts
- ✓ Work guaranteed
- ✓ Fully insured
- ✓ No call out charge

Call **Stuart** on **01784 279262**

Covering: Staines, Shepperton, Ashford, Sunbury, Wraysbury, Laleham, Egham & Stanwell.



Spelthorne Local Plan: Policies and Sites Consultation



Respond to the consultation:
www.spelthorne.gov.uk/localplan
local.plan@spelthorne.gov.uk
Consultation closes 7 Jan 2020



5 November 2019 - 7 January 2020

www.spelthorne.gov.uk/localplan

The Local Plan sets out how and where development will take place across the borough over the next 15 years and will affect every resident in Spelthorne. It is important that you read this summary pull-out and have your say.

The full documents are available to read on our website www.spelthorne.gov.uk/localplan and paper copies are available to view at the Council Offices and all libraries in the Borough. **Please see the last page of this pull-out for further details on how to find more information and respond to the consultation.**

We are here




Why do we need a new Local Plan?

The Council is consulting on a new Local Plan for the Borough, which will set out how much development we need for the next 15 years and where it will go. The finished Local Plan will contain policies for deciding planning applications and allocated sites for housing, employment and other uses.

We consulted the public in May and June 2018 to ask what were the key issues affecting Spelthorne and the options we should consider for meeting our need. After reviewing the comments made in the consultation and how well each option would deliver environmental, social and economic objectives, the Council decided to follow the option to meet our need that would maximise densities in suitable locations, release some Green Belt and produce a masterplan for Staines-upon-Thames.


This consultation sets out our Preferred Option in more detail and includes draft policies and possible sites to allocate for development (mainly housing). There will be a further public consultation, called 'Regulation 19' before we submit our final Local Plan to be examined by an independent inspector.

If we don't have an up-to-date Local Plan, we will find it difficult to say 'no' to sites being developed that could harm our most important spaces or the Government could step in and write one for us. It is better for our Borough to make decisions locally and aim for 'good growth' that delivers the homes and employment areas we need in the best places and to plan for the infrastructure required to support it.



How much housing do we need to plan for?

Our need has been calculated by the Government using their standard method based on household growth and affordability of housing in the area. The need for Spelthorne is 603 homes per year over the next 15 years. We think this number is very high, taking account of our Green Belt and flooding areas, so we challenged this method at the time it was announced. We are preparing a Local Plan that aims to meet the need so we can protect land we don't want developed but will continue to push the Government for the need figure to be reduced.



How will our GPs, schools and roads cope with an increase in residents?

We are working with infrastructure providers, including healthcare, education and highways, so they can plan for our future growth. There is funding available from the contributions developers will pay when they build their sites, to support this.




What about employment sites?

We have assessed what our needs are for new employment sites and have proposed some land in the Preferred Allocations, mainly for office and storage/distribution uses as our evidence shows we need these types of businesses but not industrial uses.



Why are you allocating pitches for Gypsies, Travellers and Travelling Showpeople (GTTS)?

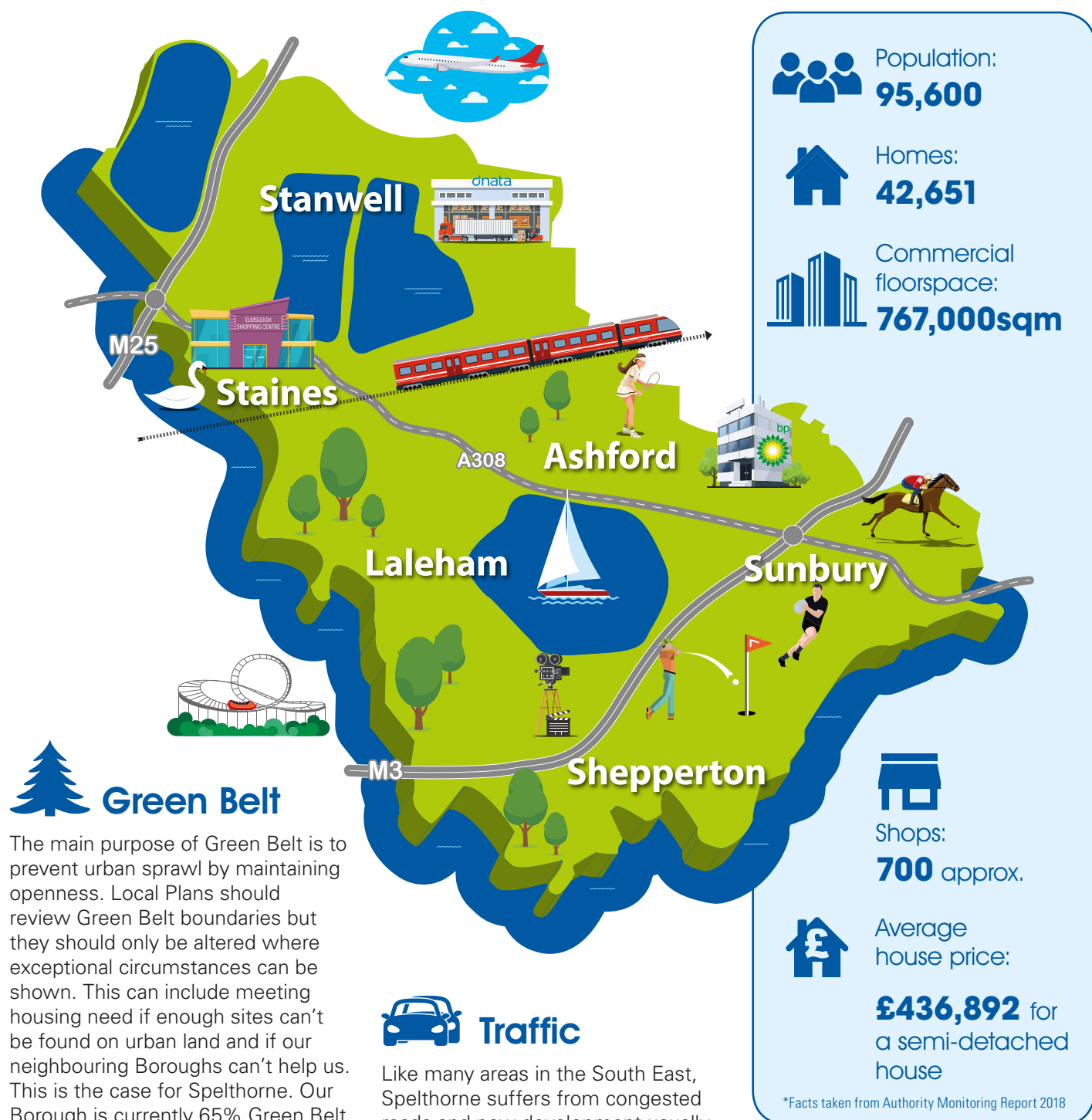
These communities are part of our population and we should meet their need, just as we are doing for the 'settled' community. This is calculated by assessing how families already living in Spelthorne will grow during the 15-year plan period. The pitches will be for our GTTS community to live on when they are not travelling and are not for seasonal travellers who pass through our Borough and camp illegally.



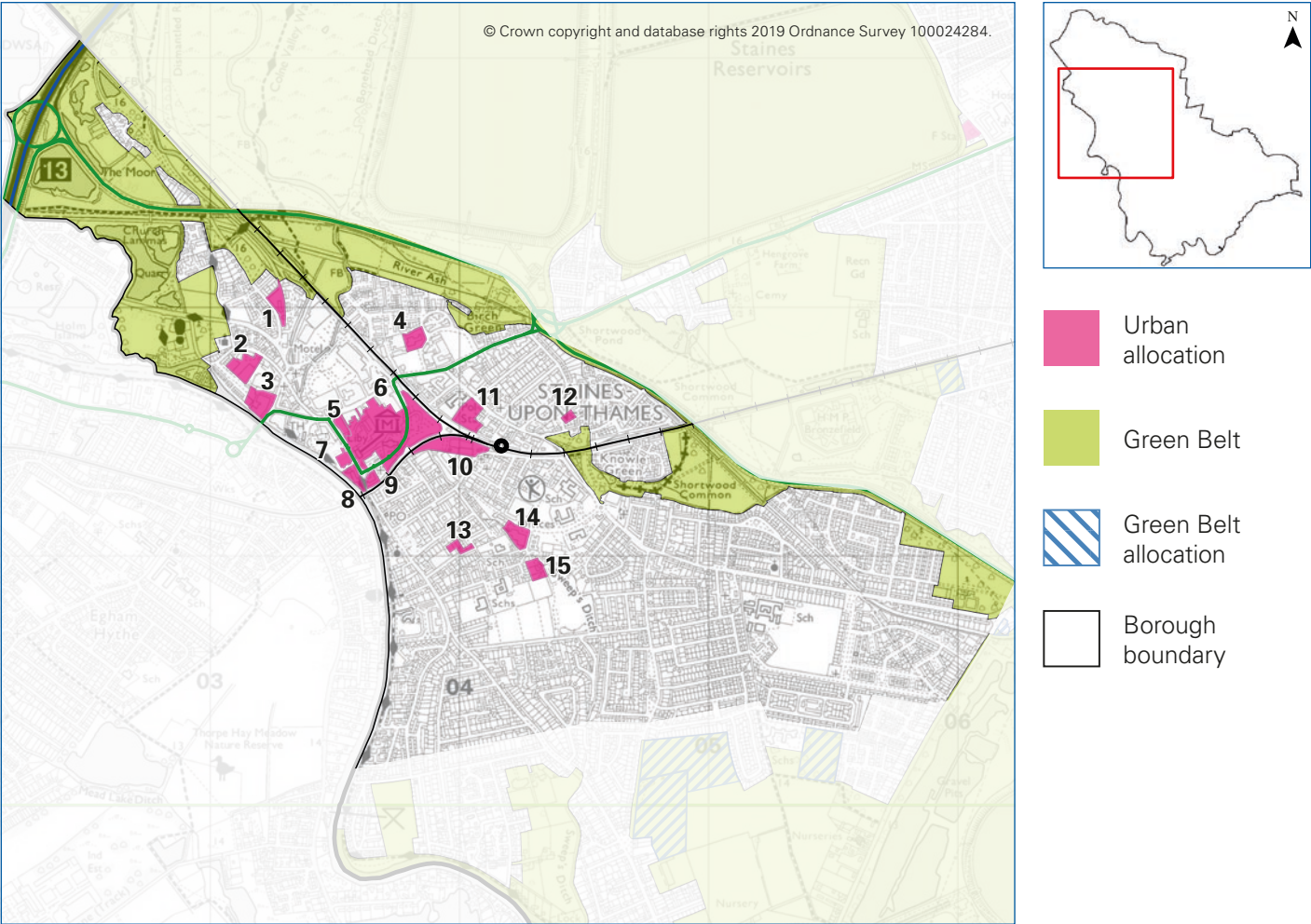
What is an allocation?

This is the term we use for when land is put forward by the owner to be developed and we set out what it will be used for (housing, employment etc), how many units and what requirements we expect to see included, such as access improvements. This supports the Local Plan by showing we can deliver the homes and other uses we need. The owner will still need to apply for planning permission but the allocation will mean it is acceptable in principle. If a site in the Green Belt is allocated for development, it will be removed from the Green Belt once the Local Plan is adopted. The Draft Allocations document gives the reasons why we think a site should be allocated and also includes sites not being taken forward and why.

Spelthorne today



Staines-upon-Thames area



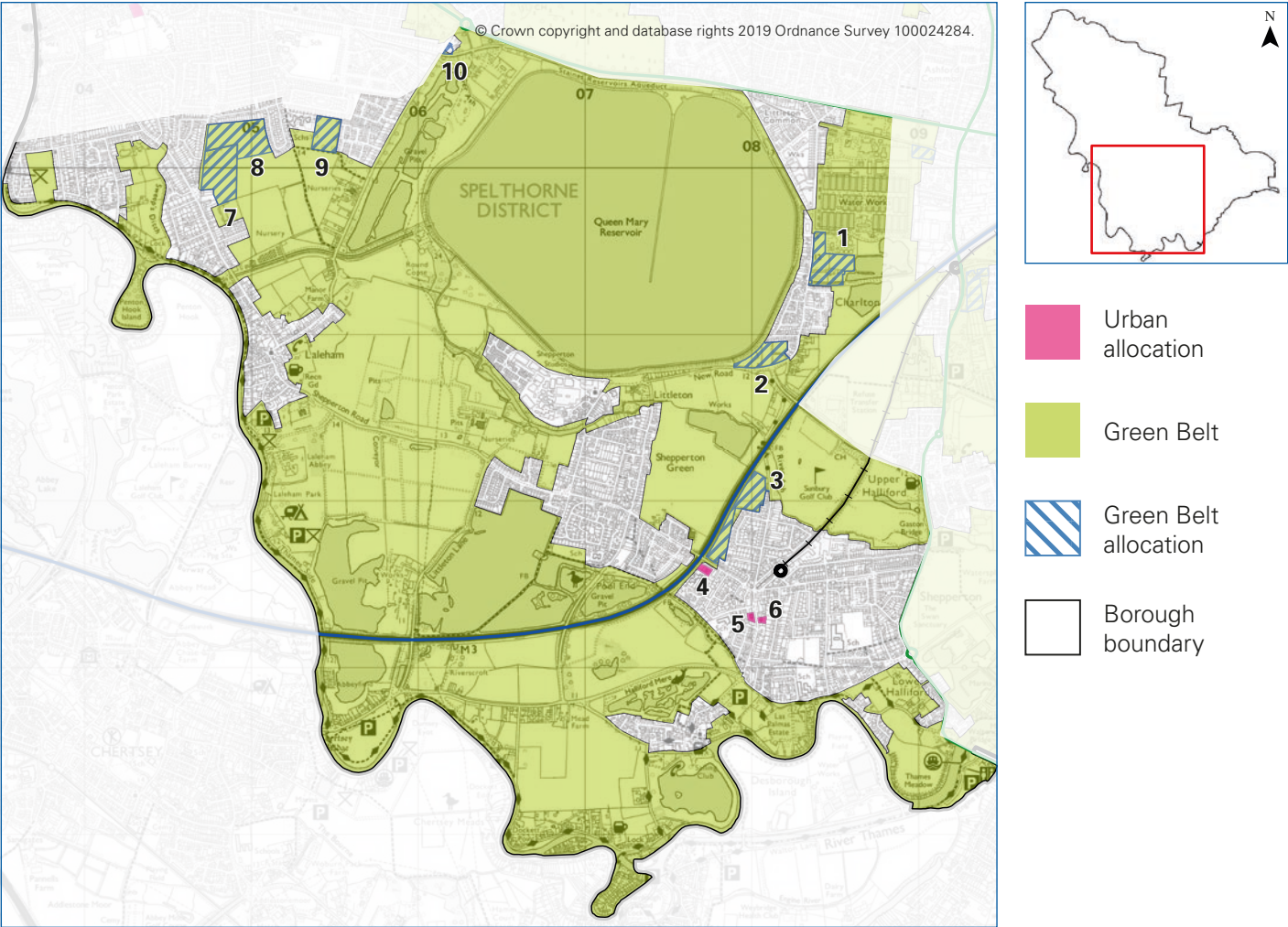
Proposed site allocations:

Map No.	Site	New homes (approx)	Requirements and comments
1	Builders Yard, Moor Lane	36	
2	96-104, Church Street	55	
3	Car Park, Hanover House & Sea Cadet Building, Bridge Street	75	Sea Cadets have been relocated.
4	Staines Telephone Exchange, Fairfield Avenue	165	Development is dependent upon service re-provision or existing uses being condensed.
5	Debenhams site, 35-45, High Street	250	
6	The Elmsleigh Centre and adjoining land, South Street	650	
7	Riverside Surface car park, Thames Street	100	
8	Thames Lodge, Thames Street	65	
9	Thameside House, South Street	120	
10	Builders Yard, Gresham Road	100	
11	Oast House and car park 34-36, Kingston Road	180	
12	Leacroft Centre, Leacroft	17	
13	Thameside Arts Centre, Wyatt Road	19	Part of the Surrey County Council service review. Services will be expected to be re-provided on-site or within suitable proximity to the current service.
14	Fairways Day Centre, Knowle Green	30	
15	Surrey CC Buildings, Burges Way	30	

Masterplan for Staines-upon-Thames

A Masterplan will be produced for Staines to show how the town centre will develop to accommodate more homes and support retail and commercial uses, together with opportunities to improve local services and public transport.

Shepperton, Laleham and Charlton Village area



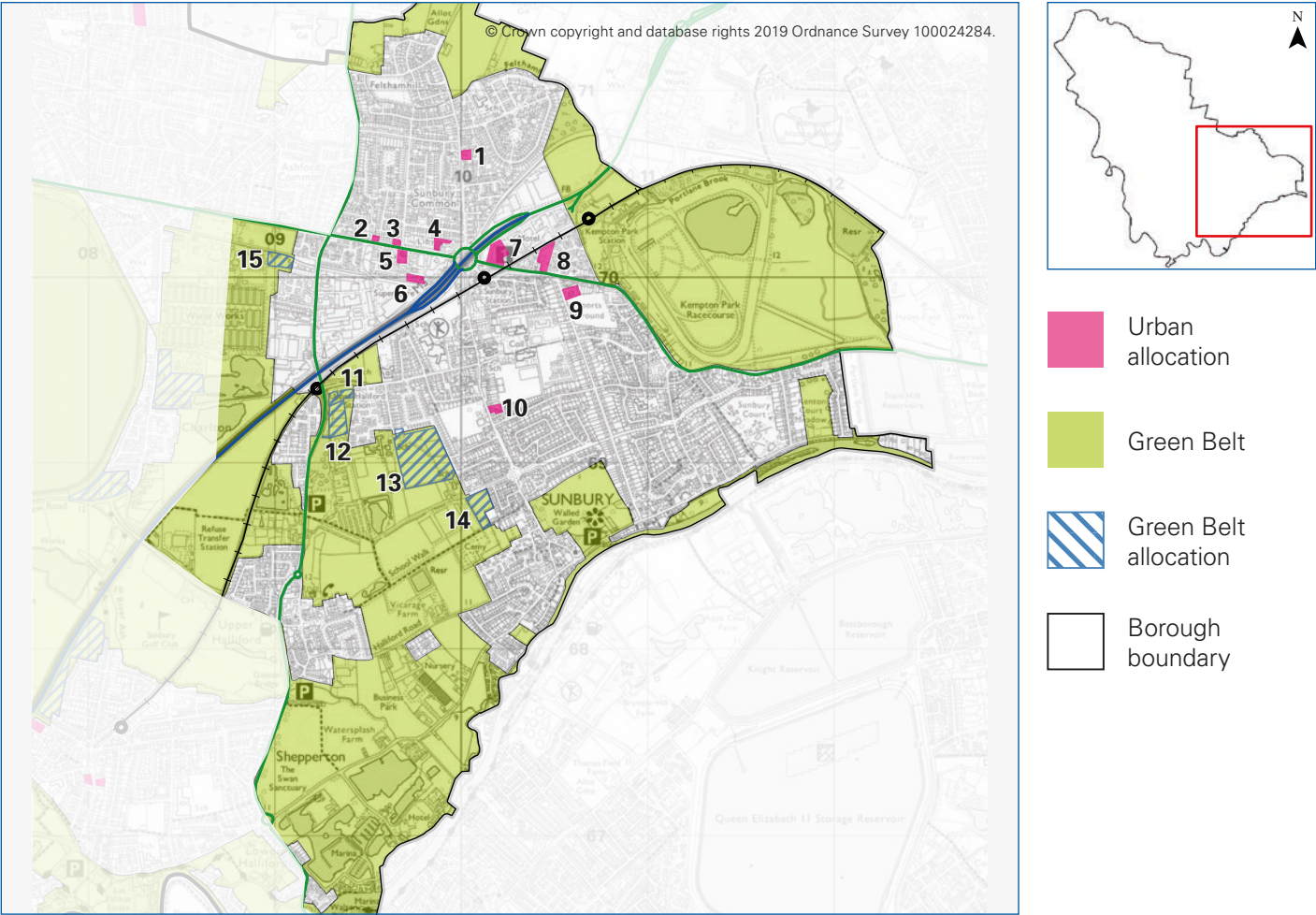
Proposed site allocations (Green Belt sites in **bold**):

Map No.	Site	Town	New homes (approx)	Requirements and comments
1	Land to South of Ashford Common Water Treatment Works, Charlton Road	Shepperton	250	The site has the same landowner as Site 15 in Sunbury and Halliford so are identified for allocation together.
2	Land North of Charlton Road	Shepperton	135	Review of the junction arrangements with Charlton Lane.
3	Staines Road Farm (Eastern Site), Laleham Road	Shepperton	200	Provision/improvement of acoustic measures.
4	Shepperton Youth Centre, Laleham Road	Shepperton	24	Subject to service re-provision or existing uses being condensed.
5	Shepperton Delivery Office, 47 High Street	Shepperton	20	
6	Shepperton Library, High Street	Shepperton	10	
7	Land at Staines and Laleham Sports Club, Worple Road	Staines	40	Redevelopment subject to re-provision of improved sports club, funded by housing development.
8	Land off Worple Road, Worple Road	Staines	256	Part of the site could be used for housing and the recreation ground upgraded to include play facilities.
9	Part of Greenfield recreation ground, Berryscroft Road and Bingham Drive	Staines	100	
10	White House, Kingston Road	Ashford	28	

What about Shepperton Studios?

The expansion of the studios into the Green Belt has already been granted planning permission on the basis of ‘very special circumstances’ due to the economic benefits it will bring, but the land will stay designated as Green Belt. We can review in the future whether the land should be removed from the Green Belt once the buildings have been completed but for now the land performs an important role and our strategy is not to release strongly or moderately performing Green Belt.

Sunbury and Halliford area



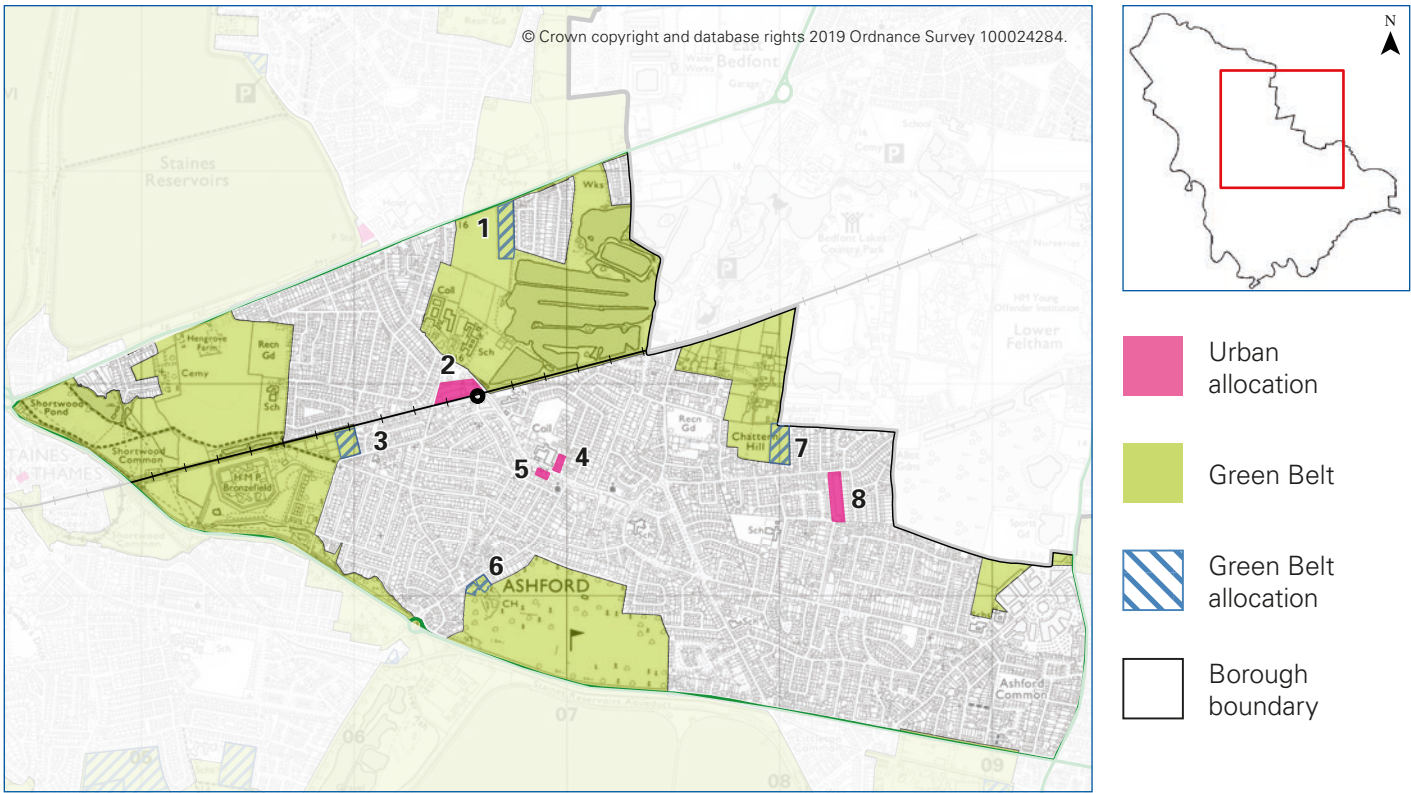
Proposed site allocations (Green Belt sites in **bold**):

Map No.	Site	New homes (approx)	Net commercial (sqm)	Requirements and comments
1	Sunbury Social Services Centre, 108 Vicarage Road	11		Subject to service re-provision or existing uses being condensed.
2	147, Staines Road West	15		
3	115, Staines Road West	15		
4	RMG Warehouse & Delivery Office, 47-79, Staines Road West	22		Subject to ensuring rear access road is maintained. Subject to service re-provision or existing uses being condensed.
5	Sunbury Fire Station, Staines Road West	27		The site is available now the new Fordbridge fire station on Kingston Road (A308) is operational.
6	Sunbury Cross Ex Services Association Club, Crossways	30		Noise attenuation measures.
7	Annandale House, 1, Hanworth Road	50	4,000	
8	77, Staines Road East	45		
9	Sunbury Adult Education Centre, The Avenue	24		Subject to service re-provision or existing uses being condensed.
10	Telephone Exchange, Green Street	14		Development is dependent upon service re-provision or existing uses being condensed.
11	Land South of Nursery Road	41		
12	Land East of Upper Halliford, Nursery Road	80		
13	Land to South and West of Stratton Road	260		
14	Land at Croysdale Avenue	65		
15	Land at Windmill Close	15 GTTS pitches		The site has the same landowner as Site 1 in Shepperton so are identified for allocation together.

What about Kempton Park racecourse?

The site has been put forward by a developer for a large housing scheme so we have assessed what impact that scale of development would have. Our Green Belt Assessment shows that the land is ‘strongly performing’ and has not been recommended for release from the Green Belt. The Strategic Highway Assessment shows that building 3000 homes at Kempton Park would have a greater impact on traffic than releasing the more dispersed Green Belt sites in our preferred allocations by concentrating development in one area and worsening conditions on routes and at junctions that are already congested.

Ashford area



Proposed site allocations (Green Belt sites in **bold**):

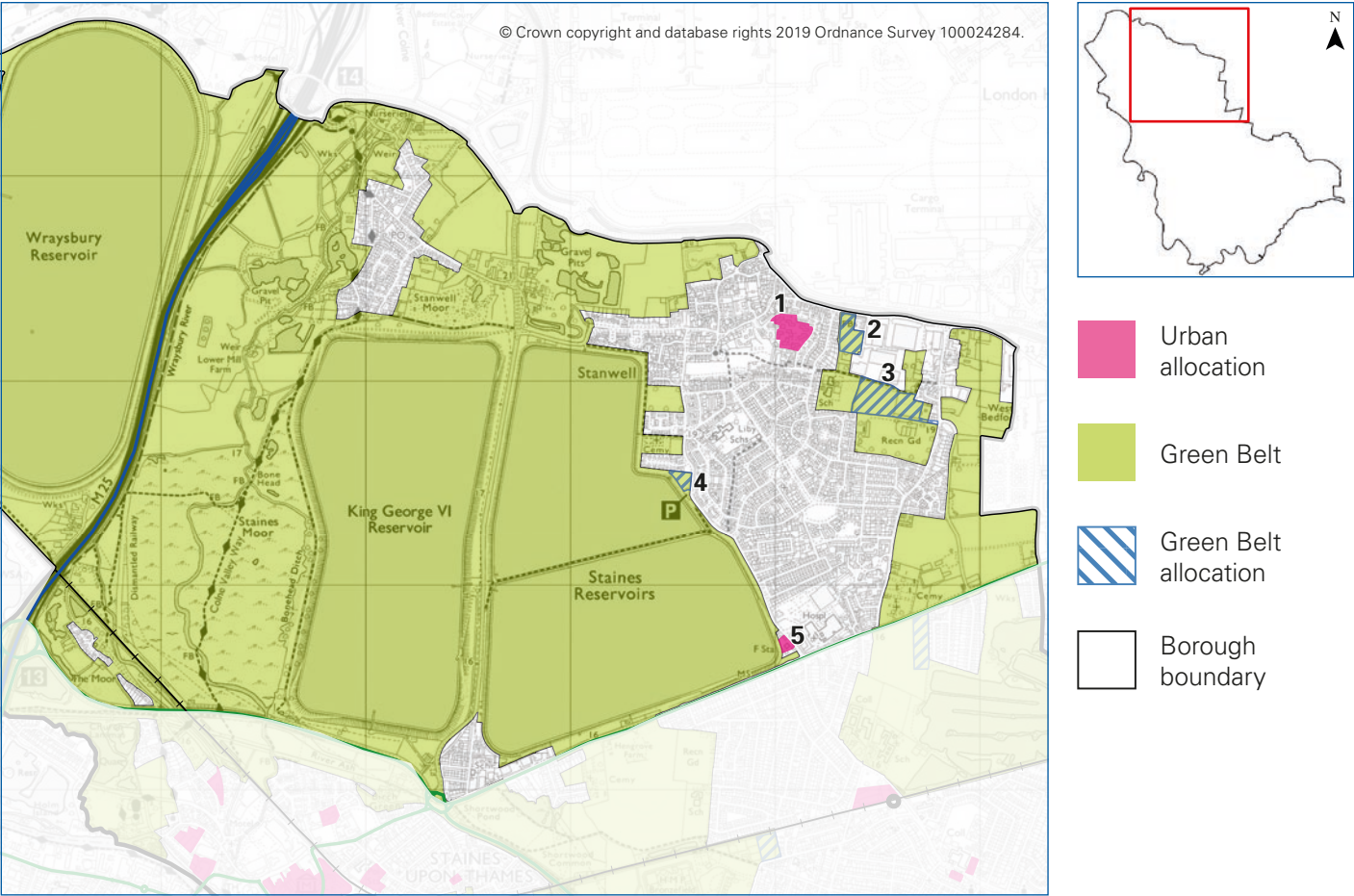
Map No.	Site	New homes (approx)	Requirements and comments
1	Land West of Edward Way, Ashford	15 and 15 GTTS pitches	
2	Hitchcock and King, Stanwell Road, Ashford	200	
3	Land East of Ashford Sports Club, Woodthorpe Road, Ashford	52	
4	Ashford Telephone Exchange, Church Road	20	Development is dependent upon service re-provision or existing uses being condensed.
5	Ashford multi-storey car park, Church Road	50	
6	Land at Ashford Manor Golf Club, Fordbridge Road	31	
7	Land at Chattern Hill	58	
8	158-166, Feltham Road	72	



What about parking in Ashford?

The multi-storey car park on Church Road is owned by Spelthorne Council and we are proposing to allocate the site for flats with potential for retail use on the ground floor. We are carrying out parking surveys to see whether there is a need to re-provide some of the existing parking provision or whether there are enough on-street spaces for shoppers.

Stanwell and Stanwell Moor area



Proposed site allocations (Green Belt sites in **bold**):

Map No.	Site	New homes (approx)	Net commercial (sqm)	Requirements and comments
1	Stanwell Bedsits, De Havilland Way	100		Net gain 100 units (totalling 400 gross) with existing land use made more efficient.
2	Land at Northumberland Close		2,000	Inside Heathrow Development Consent Order.
3	Land to the West of Long Lane and South of Blackburn Trading Estate		14,500	Inside Heathrow Development Consent Order.
4	Land to the West of Town Lane	5-8 GTTS pitches		Potential for gypsy and traveller pitches.
5	Staines Fire Station, Town Lane	30		The site is available now the new Fordbridge fire station on Kingston Road (A308) is operational.

What about Heathrow Airport?

The plans for the new runway and other airport related development will be decided by the Government as a Nationally Significant Infrastructure Project (NSIP) and instead of a planning application there will be submission of a Development Consent Order (DCO) by the airport. We have taken account of the Heathrow expansion in our Local Plan by proposing to allocate some ‘weakly performing’ Green Belt that could be used for cargo in Stanwell but Spelthorne has objected to other parts of the expansion, such as very large car parks, and we are not proposing to allocate sites for those uses. It will be for Heathrow to make their case as part of the DCO.

How to respond to the consultation: www.spelthorne.gov.uk/localplan

The full Local Plan Policies and Sites documents are available to read on our website along with all of the research and evidence documents which supports them. You can respond online www.spelthorne.gov.uk/localplan. Paper copies of the documents are available to view at the Council Offices and all libraries in the Borough. The best way to respond is using the website but you can also email local.plan@spelthorne.gov.uk or write to us: Strategic Planning, Spelthorne Borough Council, Knowle Green, Staines-upon-Thames, TW18 1XB

Consultation closes at 11.59pm on Tuesday 7 January 2020

Spelthorne Home Improvement Agency

Are you over 60 or disabled and need help living in your own home in Spelthorne?

We offer advice, support and help to tenants and homeowners within the borough of Spelthorne who are aged over 60 or have disabilities.

We can help you to do the repairs, improvements and adaptations you want in your home. We will guide you through the whole process, helping you with decisions and organising finance, as well as arranging and overseeing the building work.

Contact us to find out more

www.a2dominion.co.uk hiaadmin@a2dominion.co.uk

020 8825 1759

Typical jobs include:

- level-access showers
- ramps
- stair lifts
- downstairs toilets.

What will it cost me?

The advice we offer is free and you are under no obligation to go ahead with any work. The costs of work can often be paid for by a grant from the council.



Time for some Help at Home?



Contact us on:

01784 444200

www.ageuk.org.uk/surrey



Noticed a change in an older person in your family? Call us today to find out how we can support you or your family member to remain happy and independent at home.



Cleaning



Companionship



Shopping



Gardening



Hot Yoga Club



One class and
you'll be hooked!

**Intro Offer - 2 Weeks
Unlimited Hot Yoga
& Pilates Classes for £35***

Lose weight, build strength,
increase your flexibility
or just find a place
to relax and find your focus.

*Come and sweat with us
at Hot Yoga Club!*

**hotyogaclub.co.uk
01784 463100**

*Terms and conditions apply.

IT'S YOUR TIME TO GET STARTED

With the New Year just round the corner,
we invite you to come for a **free day trial**
at The Thames Club this December.

Enjoy a free workout, swim and some relaxation time
and learn all about our personalised fitness programme
so you're ready to go at the turn of the year!

Book your free day trial today

Call **01784 463100** | Quoting: **SPELT** | Offer ends: **31/12/19**

**FREE ONE
DAY TRIAL***



your fitness. your wellbeing. your time.

*Offer ends 31st December 2019. Must book your free trial in advance.



SPELTHORNE MEANS BUSINESS AWARDS 2019

The hard work and achievements of local businesses was celebrated at the Spelthorne Means Business Awards held at Shepperton Studios on 17 October. Finalists for each of the award categories gathered with the sponsors to celebrate their successes and toast the winners in each category:



Category	Finalists	Winner
Best Business in Spelthorne Sponsored by Spelthorne Borough Council	Finalists in the following categories	Quality Fruit Veg and Flowers
Exporter of the Year Sponsored by Heathrow	PSP Worldwide Logistics Experium Homeplay	Experium
Creative Business of the Year Sponsored by Shepperton Studios	Dramatize CIC Blackstone Printing Stars Performing Arts	Stars Performing Arts
Best New Start Up Sponsored by Enterprise Holdings	Ella Wood - Perfectly Natural Nicola Ann Photography The Hot Yoga Club	Nicola Ann Photography
Healthy Business Award Sponsored by Everyone Active	The Hit Zone Mums and Sons Harfield Dance Studio	Harfield Dance Studios
Best Business in Staines-upon-Thames Business Improvement District Sponsored by Visit Staines BID	Strategic Imperatives McDonald's Vida Homeloans	McDonalds
Independent Business of the Year Sponsored by Spelthorne Business Forum	Blackstone Printing The Thames Club Homeplay	Homeplay
Best Small Business Sponsored by A2 Dominion	Stars Performing Arts Mums and Sons Hot Yoga Club	The Hot Yoga Club
Best Business in Staines-upon-Thames and Uxbridge Sponsored by Marianne's Community Café	Vida Homeloans 360 Ultimate Fitness The Thames Club	Vida Homeloans and The Thames Club
Best Business in Ashford and Stanwell Sponsored by the Powerhouse	Karma Connection The Hit Zone Blackstone Printing	Blackstone Printing
Best Business in Sunbury-on-Thames and Uxbridge Sponsored by The Hazelwood Centre	Samara Cuisine Village Matters Churchill Hui	Village Matters
Best Business in Shepperton and Uxbridge Sponsored by Brown Bag Crisps	Stars Performing Arts Quality Fruit Veg and Flowers James of Shepperton	Quality Fruit Veg and Flowers
Best Corporate Social Responsibility Business Sponsored by Worldwide Energy Logistics Ltd	McDonald's Tesco Mums and Sons Quality Fruit Veg and Flowers	Quality Fruit Veg and Flowers



Photos by Mike Daley

Leader of Spelthorne Borough Council, Cllr Ian Harvey, said: "This has been a fantastic evening and a wonderful opportunity to celebrate the achievements of businesses in Spelthorne. I would like to offer my congratulations to all the finalists and winners whose passion, energy and sheer hard work has helped them achieve great success in Spelthorne and beyond."

If you would like to enter the next Spelthorne Means Business Awards, please email s.moralee@spelthorne.gov.uk for more details.



Thursday 5 December Sunbury Christmas market

The residents of Sunbury-on-Thames are celebrating Christmas with a special event on The Avenue Parade from 5-8pm on Thursday 5 December. Come along with the family and enjoy the festive lights, gift stalls, Santa's grotto and carol singing with the Salvation Army. The road will be closed to traffic during the event. The money raised will be used for the Sunbury community.

For more details email monica@villagematters.co.uk or call 07979 808991

Friday 6 December Christmas in Stanwell

Christmas in Stanwell is set to be bigger and better than ever this year with the annual Christmas light switch on and lantern parade on Friday 6 December.

Students from local schools, Stanwell Youth Centre and Children's Centre have been busy creating festive paper lanterns. The parade will assemble at 5.40pm at St Mary the Virgin Church, Church Approach, TW19 7JS and set off by 6pm. It will travel down Hadrian Way and finish with carols around the Christmas tree outside the Sir John Gibson Pub in Clare Road. The event will also include Santa's Grotto, stalls, music, games and face painting.



For more information, email leisure@spelthorne.gov.uk or call 01784 446433

Wednesday 11 December Shepperton Big Tree Night

Come along to the Shepperton Big Tree Night on Wednesday 11 December, a well-established festive family fair which brings in visitors from all around the Borough and beyond.

The event starts at 5pm in the High Street and Father Christmas will be arriving with his reindeer from 6.20pm. The ever-popular carols start at 6pm by the main stage and there will also be plenty of other festive attractions including craft stalls and rides for the children.

Entertainment will be provided throughout the evening and a fantastic selection of food stalls will be available.

The High Street will be closed to traffic from 4pm, with some side roads closing at 1pm.



For more details visit bigtreenight.uk

Sunday 1 December - Monday 6 January Staines Christmas art installation

Two Rivers Shopping Centre has been working with TV and film set designer Rebecca Morton, Spelthorne Borough Council and a selection of primary and secondary Schools to create a magical Christmas display on Staines High Street. Themed on Charles Dickens' 'A Christmas Carol', the installation will be created from materials we would usually throw away, to deliver a powerful message about recycling and climate change.

The art installation will be on display between 1 December and 6 January in a vacant shopping unit under the Premier Inn in the High Street.

Saturday 14 December Winter art open day



Have fun making winter-themed crafts with your children at the Resource Centre from 10am - 2pm.

Entry £1 per child (50p for siblings). No need to book, just come along and join in.

This activity is for families with children aged 3-11 years (a parent/carer must be present throughout).

Visit www.spelthorne.gov.uk/resourcecentre. Facebook @spelthorneresourcecentre

Saturday 21 December Jack and the Beanstalk

Panto at Spelthorne Leisure Centre.

Tickets: £10pp / Family ticket (4 people) £35.

Call 01784 493493 for tickets

Monday 23 December Christmas Xplorer

We are hosting a special Christmas Xplorer event from 10.30am-12.30pm on Monday 23 December at Long Lane Recreation Ground, Cambria Gardens, Stanwell, TW19 7ER.

It's the perfect outdoor activity for families, offering a friendly navigation challenge that is educational and fun.



For more information visit www.spelthorne.gov.uk/xplorer

Spelthorne Sports Awards

Presentations were made to local athletes, coaches and volunteers for their dedication and contribution to sport in Spelthorne at the annual ceremony on Tuesday 19 November at Shepperton Studios. Congratulations to the following winners:



Category	Winner
Active Surrey Coach, Leader or Instructor of the Year	Nick Harman of Spelthorne Sports Cricket Club
Everyone Active Sports Club of the Year	Odyssey Boxing Club
Specsavers Volunteer of the Year	Bob Parry of Staines Lammas Football Club
Shepperton Studios Sports Personality of the Year	Caroline Rutherford, best senior female at the British Transplant Games
Everyone Active Young Sports Personality of the Year	Aaron Evans of Queen Mary's Sailing Club
Everyone Active Young Sports Team of the Year	Buckland Primary School Lacrosse Team
Everyone Active Outstanding Service to Sport	Steve Savage of Spelthorne Community Tennis Centre
School of the Year	Laleham Church of England Primary School
Gerry Ceaser Special Recognition Award	Mary and Len Claremont of Ashford Tennis Club

Specsavers Surrey Youth Games



The Surrey Youth Games is the largest annual youth sports festival in Surrey. Sponsored by Specsavers, the main aim of the Games is to provide opportunities for young people to try new sports and increase their activity levels. Last year around 400 participants aged 6 - 16 enjoyed 6 weeks of free coaching sessions across 12 sports in the lead up to the event. The 2020 Games will take place on 13 and 14 June, with registrations to join Team Spelthorne training sessions opening in February.

To be eligible you must either live or go to school in Spelthorne. We particularly welcome beginners. Participants must not be part of a club in the sports they choose to take part in.

More details will be added to our website in the New Year at www.spelthorne.gov.uk/surreyyouthgames



Music in the Park – calling all performers!

Are you in a band or choir and interested in performing at our Music in the Park concerts this summer?

We are seeking local performers who can provide a 100 minute set and would like to showcase their talent to our residents (and also earn a small fee).

Please email leisure@spelthorne.gov.uk with as much information as possible about your act including details of previous performances and any video/YouTube footage you can provide.

Staines 10K registrations

The 2020 Staines 10K will be held on Sunday 17 May and registrations to enter this popular race will open on 1 February.

For more details or to register, please visit www.staines10K.co.uk

Leisure Directory 2020

Published in January 2020, our Leisure Directory is a really useful resource, full of activities to enable you to make the most of your leisure time in Spelthorne. There's something to suit all ages and interests. Pick up a copy at your local library, leisure centre, council offices or download a copy at www.spelthorne.gov.uk/leisuredirectory

Win leisure centre membership for two!

Everyone Active is offering the chance to win annual membership for two people which includes unlimited access to gym facilities, swim sessions and fitness classes at Spelthorne or Sunbury Leisure Centre.

Simply email spelthorneinfo@everyoneactive.com with the name of the panto being held at Spelthorne Leisure Centre on 21 December for a chance to win. Remember to include your name and contact telephone number. Closing date: **31 January 2020**

By entering you are giving permission for Everyone Active to contact you with news and offers. Competition not applicable to current Everyone Active or Spelthorne Council staff. Only one entry will be accepted per person. Privacy policy available at www.everyoneactive.com/legal-policies/privacy/ Membership T&Cs at www.everyoneactive.com/legal-policies/terms-and-conditions/



Christmas at the Community Centres

The Greeno Centre, Shepperton

01932 246173

Christmas lunches:

9-13 December. Mince pies from 10am. Christmas lunch with all the trimmings £4. Live entertainment. Afternoon raffle with tea and cake.

Christmas Eve:

11am free live entertainment. Early lunch £4.

Christmas Day:

For details, please email carolinebutton2006@yahoo.co.uk

New Year's Eve party:

1.30pm to 3pm. Free entertainment with Terry Glead.

Staines Community Centre

01784 463073

Christmas lunches:

12-13 and 16-18 December. Two-course lunch including two drinks and entertainment. £6.

The Fordbridge Centre, Ashford

01784 243880

Christmas lunches:

9-13 December. Lunch with wine and after-dinner mints, followed by entertainment and free raffle. £4.

Christmas tombola week:

16-20 December.

Free mince pies:

Friday 27 December, Monday 30 December and Tuesday 31 December.

The Benwell Centre, Sunbury

01932 784232

Christmas lunches:

Thursday 19 December and Monday 23 December. Buffet lunch and entertainment. £5.



Disabled Facilities Grant

Do you or a member of your family have a registered disability? Each year Spelthorne Council award grants to allow residents to make changes to their homes to help them remain independent and live more comfortably.

This can be a life changing service which enables residents to make improvements which specifically meet the needs of their particular disability. Examples of the type of work that is usually undertaken include:

- Installing ramps and widening doors
- Improving access to rooms and facilities (such as a stairlift or a downstairs bathroom)
- Providing a heating system
- Adapting heating or lighting controls to make them easier to use

The funding is provided by the Government along with contributions from Spelthorne Borough Council. The grants are means-tested so you need to be receiving certain benefits to be eligible. The maximum amount given is £30,000.

For more details, visit www.spelthorne.gov.uk/DFG or call the Independent Living team on **01784 448607**

Do you need help getting from A to B?

Spelride is a door-to-door transport service run by Spelthorne Council. It uses specially adapted minibuses to carry passengers with mobility problems. You can use Spelride if you are elderly or disabled and cannot use conventional public transport.

Where can I go? You can go anywhere within the Borough. This can be for many reasons, including going to the shops, the doctor, a community centre or to visit a friend or relative.

When can I use the service? Monday to Friday 9am-11am and 2-4pm for transport to and from the community centres and 11am-2pm daily for other trips.

There is a charge for this service.



For more information, please visit www.spelthorne.gov.uk/spelride or call Neighbourhood Services on **01784 446411**

Meals on Wheels at Christmas

We will be providing our usual Meals on Wheels service up to, and including, Christmas Eve, and will have a limited service on Christmas Day, Boxing Day and New Year's Day for those who are eligible.

For more details or to change your usual arrangements, please contact us on **01784 444265** by **Friday 13 December**



Free parking in Ashford

Spelthorne Council has extended free parking at Ashford multi-storey car park until 5 January 2020.

This follows the disruption caused by work for the Brooklands College development in Ashford High Street in September.

Cllr Ian Harvey, Leader of Spelthorne Council, said: "Despite the recent road closure being outside of our control, we are very happy to make this gesture of support to Ashford residents, businesses and shoppers, in particular in the run up to Christmas, and hope it will make a real difference. This is further evidence that Spelthorne really does mean business."



Eating out this Christmas?

Christmas is a time to enjoy good company and good food without worrying about food poisoning. But the truth is, you can't tell a restaurant's hygiene standards by how busy or clean it appears.

Put your mind at rest by checking the food hygiene rating before you choose where to eat. These ratings are determined by our Environmental Health Officers who inspect all the Borough's food outlets and give a rating out of 5.

Check online at ratings.food.gov.uk/spelthorne or call Environmental Health on **01784 446291**

Legal Services Intern opportunity

Spelthorne Council's Legal Services department have an opportunity for a paid internship during the summer of 2020. This would suit a law student who is considering a career in the legal profession. Candidates must have a connection with Spelthorne.

Applications must be returned by the end of February 2020. Interviews will take place around the Easter holidays with the position starting in the summer of 2020.



Further information can be found at www.spelthorne.gov.uk/legalintern



Council Office - Christmas closure

The Council Offices in Knowle Green will be closed from 3.45pm on Tuesday 24 December until 8.45am on Thursday 2 January 2020.

The Council's out of hours emergency number is **01784 451499**

Warning to fly-tippers

Spelthorne Council has recently prosecuted two individuals for offences related to fly-tipping and is reminding offenders that the Council will always take action against anyone caught illegally dumping waste.

In September, Dean Beldom from Slough pleaded guilty to two offences of fly-tipping in Sheep Walk, Shepperton, in May and June 2018. Mr Beldom was fined a total

of £1296 and ordered to pay £1600 for the clean-up, £1880 prosecution costs and a victim surcharge of £64. The court also ordered the removal of Mr Beldom's vehicle which was caught on CCTV during the incident.

The Council also prosecuted Mr Mohammed Bhatti from Hounslow who pleaded guilty to one offence of 'breach of duty of care in the disposal of waste' in Hithermoor Road in Stanwell Moor in August. He was fined £1172 and ordered to pay the costs of £700 plus a victim surcharge of £117. Both cases were heard at Guildford Magistrates Court.

Don't forget, if you pay someone such as a builder, gardener, or 'man-with-a-van' to take your waste away, you can be held liable and fined if they illegally dump your rubbish. To avoid a potential fine, check they have a waste carrier's licence. Ask to see the original licence, not a copy, ensure you know where your waste will go, and keep a note of the name of the person/business and their vehicle.

You can check if someone has a waste carrier's licence on the Environment Agency website at www.gov.uk/guidance/access-the-public-register-for-environmental-information or by calling **03708 506 506**



Fly-tipping in Hithermoor Road, Stanwell Moor



Spelthorne in Bloom needs you!

The Spelthorne in Bloom Committee is looking for new members. If you would be interested in helping to judge entries for this annual competition and encouraging others to brighten up the Borough, they would love to hear from you. They also need more sponsors, so please get in touch if you are looking to promote your company at a local level and support this special community initiative.

The Spelthorne in Bloom competition opens again in spring with a variety of categories to enter - more details will be available in the next edition of the Bulletin.

Please contact Vanessa Surmon by email at v.surmon@spelthorne.gov.uk or call **01784 444288**





Helping you stay warm this winter

It's that time of year again and the cold weather is upon us. If you are struggling to keep your home warm and finding your energy bills are too high, then Action Surrey, working in partnership with Spelthorne Borough Council can help. We can offer advice on the best energy saving

measures such as cavity wall and loft insulation or a replacement boiler, and let you know if you qualify for a grant towards the work.

If you're living in a poorly heated home and are in receipt of benefits or have certain health conditions made worse by the cold, then please get in touch with Action Surrey.

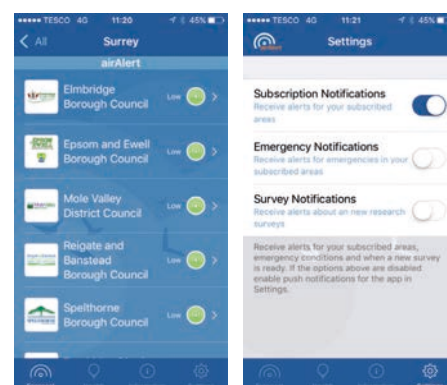
For more information, visit our website at www.actionsurrey.org or call **0800 783 2503** to speak to one of our advisors



Air pollution warnings

airAlert is a free service to help people with asthma and COPD manage their conditions when air quality is poor. While air pollution levels in Spelthorne are generally low, there are some days when they are capable of causing short-term health problems for people with respiratory illnesses.

The airAlert service informs users when pollution levels are expected to be elevated, either by voicemail, text or email, to help them manage their health more effectively. There is also an airAlert app which can be downloaded.



For more details or to sign-up, visit www.airalert.info or call the Council's Environmental Health team on **01784 446251**

Have you got your smart meter yet?

Smart meters are the next generation of gas and electricity meters. They're being installed by energy suppliers in every home in England,



Scotland and Wales and will bring Britain's energy system into the 21st Century.

We all want to make big changes to help our planet and sometimes we have to start small. Smart meters can't solve climate change on their own but with the smarter, more efficient energy grid they help to create, they are a start.

Smart meters automatically send readings to your energy supplier at least once a month, so you will receive accurate (not estimated) bills and no more meter readings. They come with a display screen that shows you exactly how much energy you're using in pounds and pence and help you make changes to use less.

Contact your utility supplier to request your smart meter or visit www.smartenergyGB.org

Staines Park receives special protection status

Spelthorne Council has protected Staines Park for current and future generations to enjoy by signing a 'Deed of Dedication' with Fields in Trust.

Established in 1925, Fields in Trust is an independent charity which champions and supports parks and green spaces by protecting them for people to enjoy in perpetuity.

In 2018, Staines Park was identified as Spelthorne Council's preferred site for a new leisure centre but after working alongside Staines Park Residents' Association, the Council committed to find an alternative site for the leisure centre and protect the park from future developments.

Leader of the Council, Cllr Ian Harvey, added: "We have been very

pleased to work with the Staines Park Residents Association to achieve this special status for Staines Park. Residents are understandably very protective of their local open spaces and I hope this announcement gives everyone reassurance that the park will remain unspoilt for future generations to enjoy."

And there's more good news for Staines Park. Spelthorne Council is delighted to announce that it has been awarded a grant of up to £15,000 by The London Marathon Charitable Trust towards the creation of a fitness trail with exercise equipment in Staines Park. The news coincides with Spelthorne Council also successfully gaining funding of £5,000 from Fields in Trust for improvements to the park.



The funding applications for both bids were submitted with help from the Staines Park Residents Association. Chairperson for the Staines Park Residents Association, Cath Moore, said: "Staines Park is a valued local amenity and we are extremely grateful for this grant which will enable the park to be even more inclusive, allowing more people to enjoy all of the facilities that the Park has to offer."

Group Photo: Members of Staines Park Residents Association and Spelthorne Council representatives at Staines Park.

River Thames Task Group

With 12 miles of the river flowing through Spelthorne, the Thames provides a beautiful and ever-changing landmark in the Borough, with endless possibilities for leisure and recreation.



Established in 2018, and made up of councillors, businesses and river users, the River Thames Task Group (RTTG) is dedicated to improving access to the river and enhancing residents' enjoyment of the water.

Spelthorne Council plans to introduce new signage to welcome visitors and is seeking to provide more moorings. However an element of persistent, unauthorised mooring without permission has generally been an increasing problem on the Thames, at times accompanied by anti-social behaviour issues. The RTTG is working with neighbouring boroughs to identify possible solutions, including the option of introducing a Public Spaces Protection Order.

Earlier this year, the RTTG also arranged for the facilities at Shepperton Lock to be upgraded with refurbished toilets, improved waste disposal services, a safety throw line and drinking fountain. Parking for visitors has also been improved.

In Staines-upon-Thames, a new jetty for pleasure boats will soon be delivered and improvements are also planned to make the river in Sunbury more accessible and attractive for visitors.

The RTTG always welcomes ideas, so do get in contact using the details below.

Contact the Chair of the RTTG, Cllr Vivienne Leighton, by email at leighton@spelthorne.gov.uk or call 07914 413396



RIVERMEDE
COURT
CINNAMON LUXURY CARE



Luxurious New Care Home

Every aspect of our new care home has been planned with the people we care for in mind - whether it is the personalisation of their care plans, the careful selection of decor in their room, their dining experience, hobbies or personal preferences...

At Rivermede Court, people will always come first.

For more information call **01784 818 024** to arrange a visit any time or see our website: cinnamoncc.com/rivermedecourt.

Residential | Dementia Care | Respite



Rivermede Court Care Home

The Avenue, Egham, Surrey, TW20 9AD

t: 01784 818 024 e: rivermede.haa2@cinnamoncc.com w: cinnamoncc.com/rivermedecourt

LADBROKES CHRISTMAS FESTIVAL

26 - 27 DECEMBER
KEMPTON PARK RACECOURSE



THEJOCKEYCLUB.CO.UK/KEMPTON

◆◆◆◆
THE JOCKEY CLUB
KEMPTON PARK

Ladbrokes