

GREEN AND BLUE INFRASTRUCTURE

WATER

WHAT DOES THE PLAN SHOW?

The plan shows surface water bodies, watercourses and areas of fluvial flood risk.

The southern edge of the borough is bounded by the River Thames, and reservoirs make up 18% of the borough's area. The borough is largely flat, and there are large designated zones where river (fluvial) flooding is a risk.

The reservoirs can cause severance between communities, and prevent views from ground level.

Storm events, of increasing severity due to climate change, can also cause surface water flooding issues. These effects are often localised and difficult to map at a borough level.



River Thames at Sunbury



River Colne in Staines - an underused asset

WHAT DOES THIS MEAN FOR THE CODE?

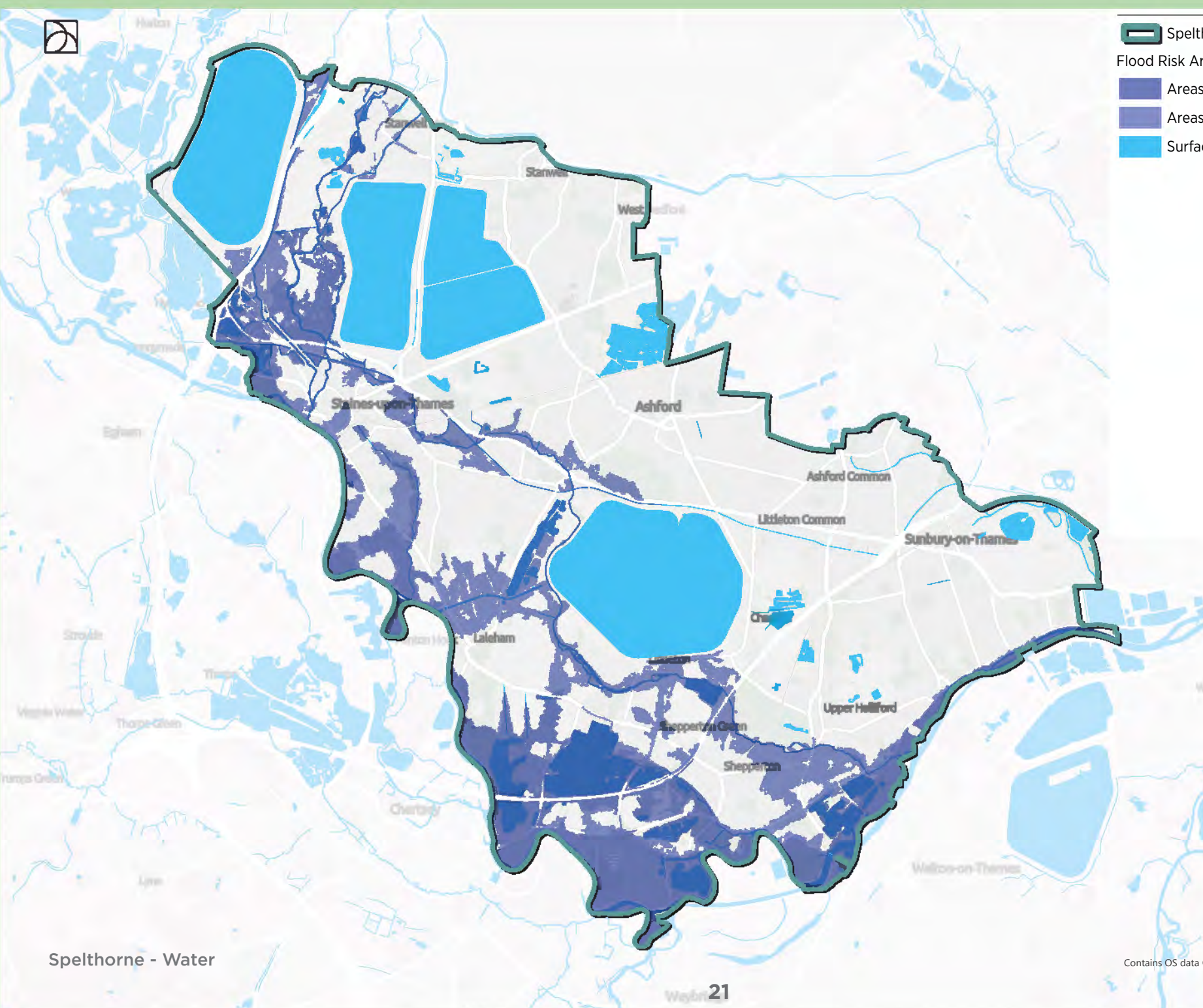
At a technical level, the Design Code will need to set out how new development can take measures to appropriately mitigate their impact on surface water flows. It may need to consider how fluvial flooding and future changes due to climate change will affect the design of development in areas of risk.

Water is also an important component of high quality placemaking, and development near to water will need to consider how to make the most of Spelthorne's assets through connectivity, access to water for users, and views.

Groundwater and groundwater flows are an area of active interest and as evidence becomes validated and available the Design Code may need to consider it, although any impact this might have on development location or type will be determined by Local Plan policy.

WHERE DID THIS DATA COME FROM?

- Ordnance Survey OpenData - Surface Water Layer
- Surrey County Council - Strategic Flood Risk Assessment (fluvial flooding)



Spelthorne Borough Boundary

Flood Risk Areas

- Areas Liable To Flood (20 Year Event)
- Areas Liable To Flood (100 Year Event)
- Surface Water

Rev	Description	Date
All information is copyright protected and may not be used or reproduced without prior permission. Do not scale.		
© Crown copyright and database right 2018. All rights reserved. Ordnance Survey Licence number 100019980		

Notes:
 This drawing is for information purposes only. It should not be relied upon for legal or title purposes. Do NOT scale from this drawing or use in construction. Proper advice should be sought from relevant qualified entities regarding legal and construction issues. Any discrepancies should be immediately reported to the originator of the drawing.



Spelthorne Design Code
Baseline Plans - Water

Scale: AS.	Drawn:	Designed:	Approved:
1:40,000	OR	-	HA
0			1,600 m
Drawing Number:	Revision:	Date:	
SPEL04-002	-	27.06.2024	
50 North Thirteenth Street, Central Milton Keynes, MK9 3BP 01908 666278 mail@davidlock.com davidlock.com			

Contains OS data © Crown Copyright and database right 2023
 Contains data from OS Zoomstack

GREEN AND BLUE INFRASTRUCTURE

GREEN INFRASTRUCTURE

WHAT DOES THE PLAN SHOW?

The plan shows Green Infrastructure assets within the borough, based on national data.

Green infrastructure is a network of multi-functional green space and other green features, urban and rural, which can deliver quality of life and environmental benefits for communities.

It includes parks, open spaces, playing fields, woodlands - and also street trees, allotments, private gardens, green roofs and walls, sustainable drainage systems (SuDS) and soils. It can also include rivers, streams, canals and other water bodies, sometimes called 'blue infrastructure'.

There are a wide range of natural and accessible green spaces in the borough, both within and on the edge of built-up areas to provide space for recreation and access to nature. Some of these spaces and habitats are joined up, often through connected woodland corridors.

Areas such as Ashford, Sunbury Cross and Staines-upon-Thames town centre, although near to large open areas, have little green open space within the built-up areas. Stanwell has some open space and parks although of limited quality.

Other areas, such as Sunbury village, are well-provided with attractive green open spaces which form a key part of their character.



Stanwell Village Park



Sunbury Park

WHAT DOES THIS MEAN FOR THE CODE?

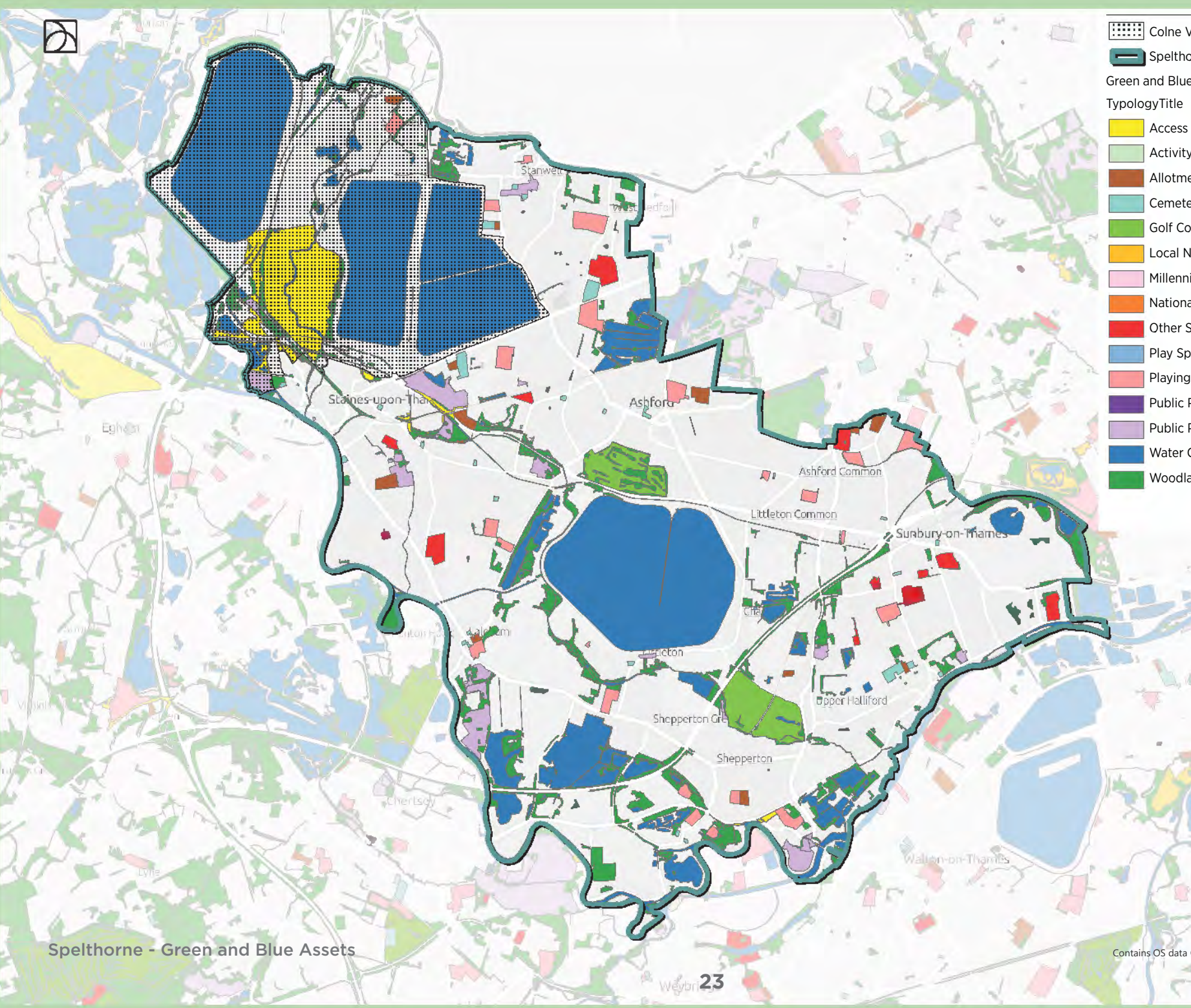
High-quality, accessible green infrastructure in a borough such as Spelthorne is vitally important. The Design Code could set out how different types of development can incorporate these spaces throughout, increasing publicly accessible Green Infrastructure.

In areas where there is a relative lack of open space, it can emphasise its importance in design. In areas where there are opportunities to extend existing networks and habitats, the Design Code can signpost these. New development should connect to existing open spaces as much as possible to further their use and amenity.

In areas of Biodiversity Opportunity, the Design Code should flag to applicants where to find information on incorporating key measures into their schemes.

WHERE DID THIS DATA COME FROM?

- Natural England - Green and Blue Infrastructure Assets



- Colne Valley Regional Park
- Spelthorne Borough Boundary
- Spelthorne Borough Boundary
- Green and Blue Assets**
- Typology**
- Title**
- Access Land (Countryside Rights of Way Act)
- Activity Spaces Provision
- Allotments and Community Growing Spaces
- Cemeteries and Religious Grounds
- Golf Course
- Local Nature Reserve
- Millennium or Doorstep Green
- National Nature Reserve
- Other Sports Facilities
- Play Space Provision
- Playing Fields
- Public Park - Country Park
- Public Park - General
- Water Courses and Surface Water Features
- Woodland

Rev	Description	Date
	All information is copyright protected and may not be used or reproduced without prior permission. Do not scale.	
	© Crown copyright and database right 2018. All rights reserved. Ordnance Survey Licence number 100019980	

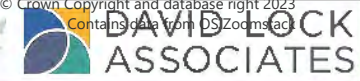
NOTES:
 This drawing is for information purposes only. It should not be relied upon for legal or title purposes. Do NOT scale from this drawing or use in construction. Proper advice should be sought from relevant qualified entities regarding legal and construction issues. Any discrepancies should be immediately reported to the originator of the drawing.



Spelthorne Design Code
Baseline Plans - Green and Blue Assets

Scale: AS	Drawn: OR	Designed: -	Approved: HA
0			1,600 m
Drawing Number: SPEL04-002	Revision: -	Date: 27.06.2024	

50 North Thirteenth Street, Central Milton Keynes, MK9 3BP
 01908 666278 mail@davidlock.com davidlock.com
 Contains OS data © Crown Copyright and database right 2023
 Contains data from OS Zoomstack



GREEN AND BLUE INFRASTRUCTURE

PROTECTED ENVIRONMENTS

WHAT DOES THE PLAN SHOW?

The plan shows statutory and policy designations for environmental protection within the borough.

The north of the borough, around Staines Moor and the reservoirs has a range of environmental protections, reflecting its importance as a space for wildlife and ecology.

Many of these areas serve double-duty for wildlife and recreational use, and are valued open spaces for the community.

Elsewhere in the borough, there are opportunities to improve biodiversity and provide new habitats, which new development will need to respond to.



Shortwood Common - Site of Special Scientific Interest (SSSI), Common Land, Biodiversity Opportunity Area

WHAT DOES THIS MEAN FOR THE CODE?

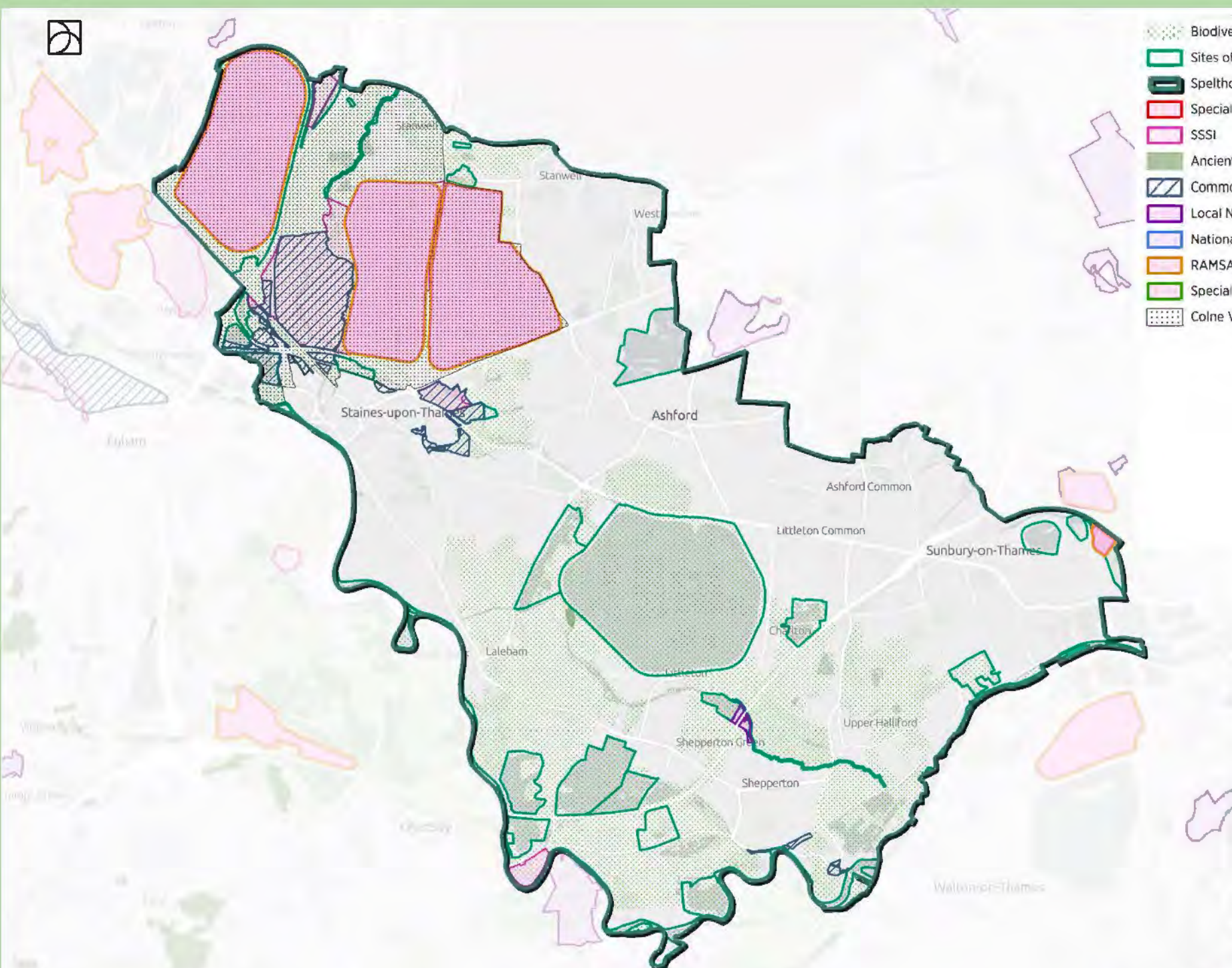
The Design Code can set out approaches for enhancement of biodiversity throughout new development, enhancement of existing networks and spaces, and creation of new habitats.

Measures identified in Biodiversity Opportunity Areas can be highlighted to ensure wider awareness and application.

Many applications will need to demonstrate how they will deliver their statutory obligation for Biodiversity Net Gain (BNG). The Design Code should set out appropriate design opportunities to achieve this.

WHERE DID THIS DATA COME FROM?

- Natural England - Environmental Designations
- Spelthorne Emerging Local Plan - Sites of Nature Conservation Importance
- Spelthorne Emerging Local Plan - Colne Valley Regional Park boundary



- Biodiversity Opportunity Areas
- Sites of Nature Conservation Importance (LP)
- Spelthorne Borough Boundary
- Special Protection Areas
- SSSI
- Ancient Woodland
- Common Land
- Local Nature Reserves
- National Nature Reserves
- RAMSAR
- Special Areas of Conservation
- Colne Valley Regional Park

Rev Description Date
 All information is copyright protected and may not be used or reproduced without prior permission. Do not scale.
 Crown copyright and database right 2018. All rights reserved. Ordnance Survey Licence number 100019980

Notes:
 This drawing is for information purposes only it should not be relied upon for legal or title purposes. Do NOT scale from this drawing or use in construction. Proper advice should be sought from relevant qualified entities regarding legal and construction issues. Any discrepancies should be immediately reported to the originator of the drawing.

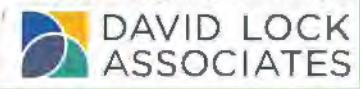


Spelthorne Design Code
Baseline Plans - Green & Blue Assets

Scale: A3	Drawn: DR	Designed: HA	Approved: HA
1:40,000	0	1,600 m	1,600 m

Drawing Number: **SPEL04-004** Revision: - Date: **27.06.2024**
 50 North Thirteenth Street, Central Milton Keynes, MK9 3BP
 01908 665278 mail@davidlock.com davidlock.com

Contains OS data



GREEN AND BLUE INFRASTRUCTURE

TOPOGRAPHY

WHAT DOES THE PLAN SHOW?

The plan shows the elevation of the borough above sea level.

Spelthorne is a largely flat borough, gently rising from south to north, reflecting its location in the Thames Valley. This has enabled relatively productive agriculture and then unconstrained development patterns historically.

The embanked reservoirs are very prominent within the surrounding landscape, which can cause intervisibility issues at ground-level and poor place quality in their vicinity. Reservoirs do serve to maintain separation between urban areas and retain their distinctiveness, but also form barriers to movement and connection.



Embankments between Staines Reservoirs

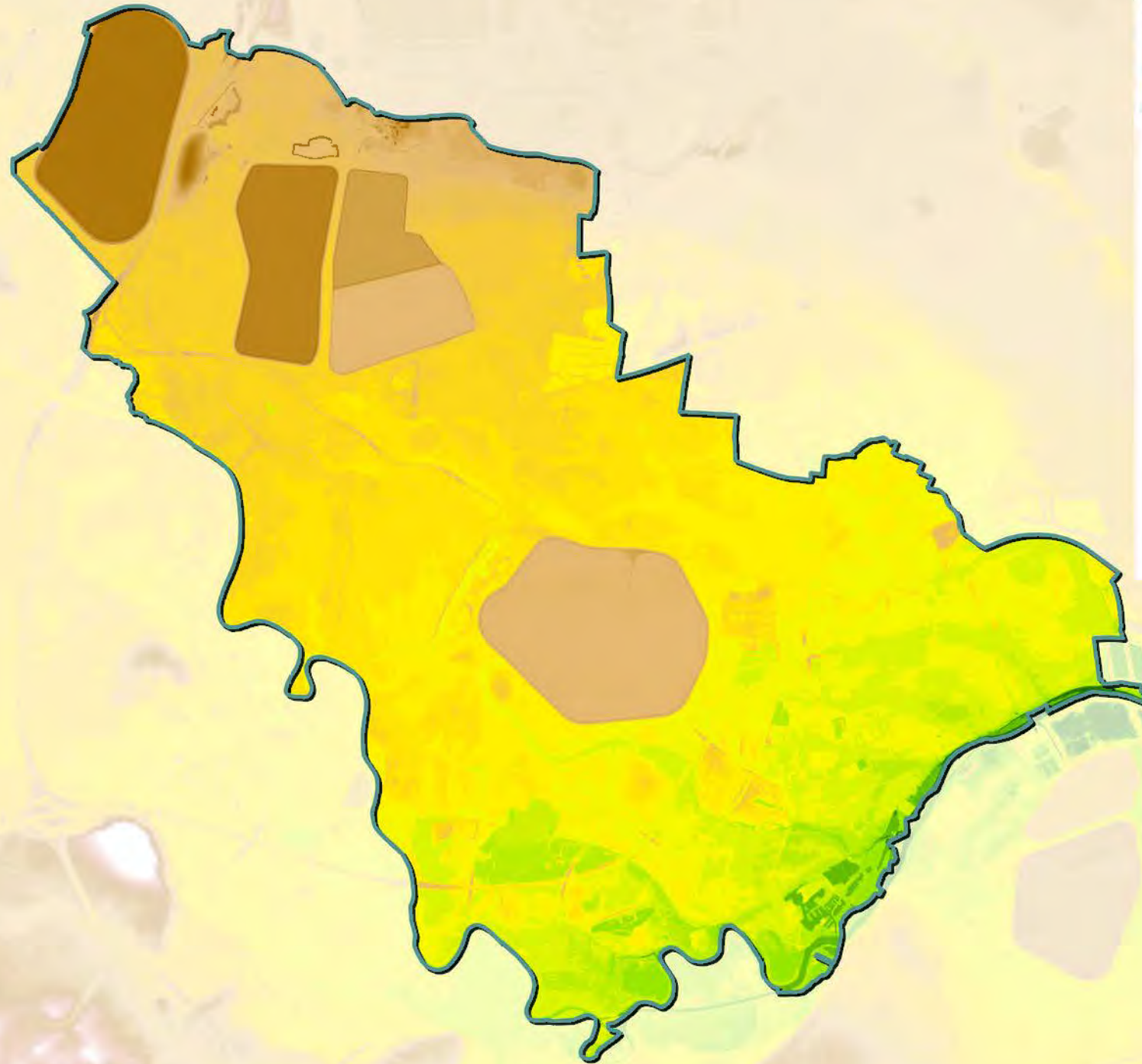
WHAT DOES THIS MEAN FOR THE CODE?


Unlike in some areas, the Design Code will not need to examine in detail development on slopes or areas of complex topography, as this is not a major constraining influence on form, layout and type of development. The visual impacts of development are more localised as there is little raised ground to form view points.

Relatively flat topography can support active travel, particularly cycling, as an attractive mode of transport provided segregated, safe infrastructure is in place.

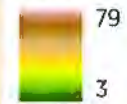
WHERE DID THIS DATA COME FROM?

- Environment Agency LIDAR Digital Terrain Model (1m)



 Spelthorne Borough Boundary

LIDAR Elevation



Spelthorne - Topography

Weybr 27

Contains OS data

Rev	Description	Date
1	All information is copyright protected and may not be used or reproduced without prior permission. Do not scale.	
2	Client copyright and database right 2018. All rights reserved. Ordnance Survey Licence number 100019980	


Notes:
This drawing is for information purposes only it should not be relied upon for legal or title purposes. Do NOT scale from this drawing or use in construction. Proper advice should be sought from relevant qualified entities regarding legal and construction issues. Any discrepancies should be immediately reported to the originator of the drawing.



Spelthorne Design Code

Baseline Plans - Landscape

Scale	Drawn	Designed	Approved
1:40,000	OR	-	HA
0			1,600 m



Drawing Number	Revision	Date
SPEL04-005	-	27.06.2024

50 North Thirteenth Street, Central Milton Keynes, MK9 3BP
01908 665278 mail@davidlock.com davidlock.com

