

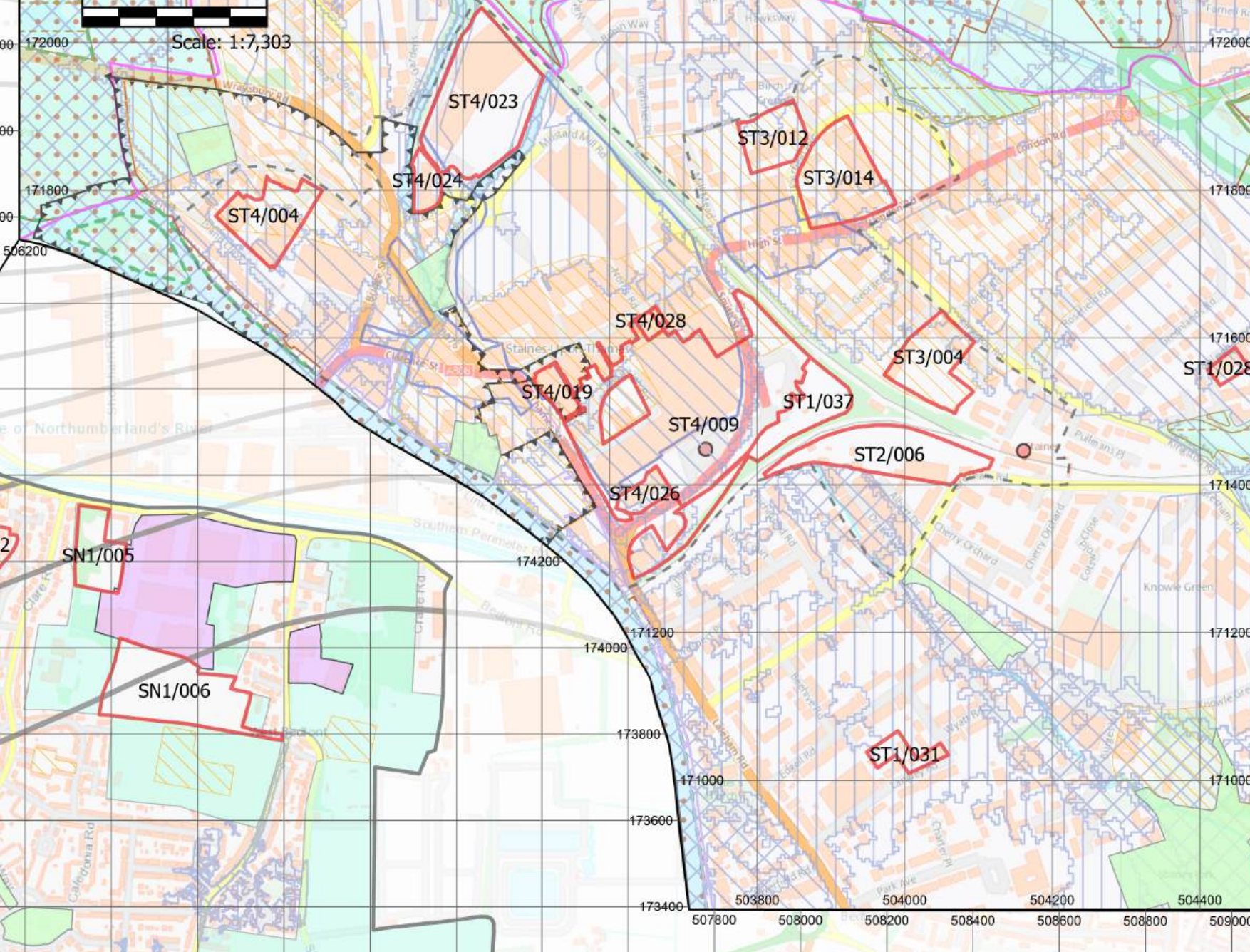


Policies Map Spelthorne Local Plan 2024-2039

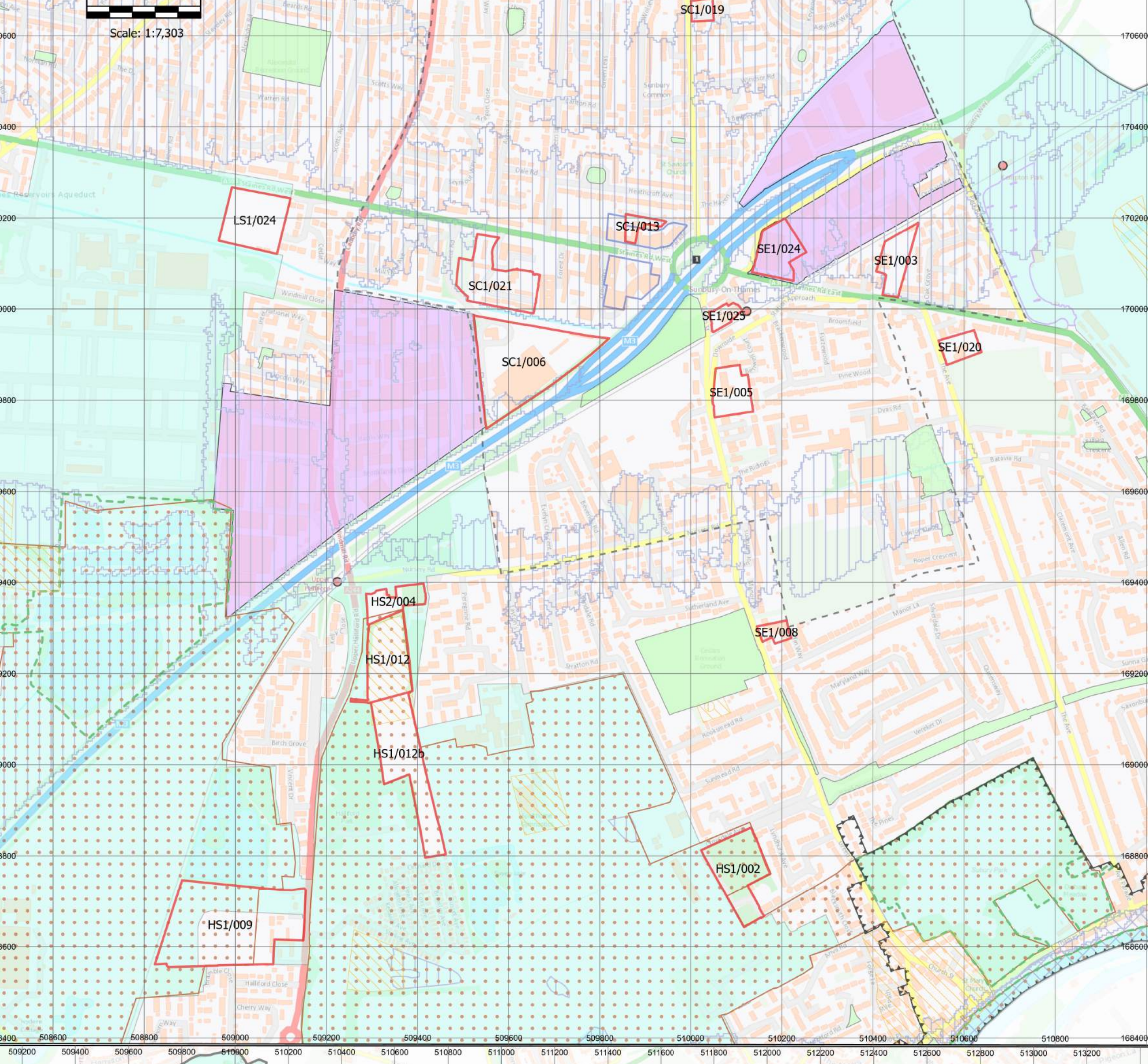
- Borough boundary
- Allocated sites
- SP1 Staines-upon-Thames**
- Staines-upon-Thames
- SP2 Ashford, Shepperton and Sunbury Cross**
- Ashford, Shepperton and Sunbury Cross
- SP4 Green Belt**
- Green Belt
- SP5 Colne Valley Regional Park**
- Colne Valley Park
- SP6 River Thames and its Tributaries**
- River Thames Scheme Areas and Land Under Consideration
- River Thames Scheme Indicative Channel Alignment
- (This map shows the proposed boundaries of the River Thames Scheme as of December 2024 but may be subject to change. The most up to date information available will always be accessible via the Council's Interactive Policies Map.)
- SP7 Heathrow Airport**
- Public Safety Zone
- Heathrow Noise Exposure Contours
- (This map shows the Heathrow 2024 average summer day standard model (AAS 10 noise contours).)
- E1 Green and Blue Infrastructure**
- Common Land
- E2 Biodiversity**
- Sites of Special Scientific Interest (SSSI)
- Sites of Nature Conservation Importance (SNICIs)
- Special Protection Areas (SPA) and Ramsar sites
- Biodiversity Opportunity Areas (BOA)
- E3 Managing Flood Risk**
- Flood Zone 2 - Medium Probability
- Flood Zone 3a - High Probability
- Flood Zone 3b - The Functional Floodplain
- (This map shows flood risk areas based on information supplied by the Environment Agency. The Council will always use the latest published information as a material consideration in determining planning applications. Flood zones 2 & 3a (100 & 1000 year events) are EA data, dated May 2023.)
- E5: Open Space and Recreation**
- Local Green Space
- EC1 Meeting Employment Needs**
- Strategic Employment Area
- Public Transport Station
- EC2 Retail Needs**
- Primary Shopping Area
- PS3 Heritage, Conservation and Landscape**
- Conservation Areas
- Scheduled Ancient Monuments
- Sites and Areas of High Archaeological Potential
- Sites and Monuments of County Archaeological Importance

0 1 Kilometers
Scale: 1:12,500 at A0 paper size
Contains OS data © Crown Copyright and database right. Spelthorne Borough Council. Licence No. A23000012041, 2026.

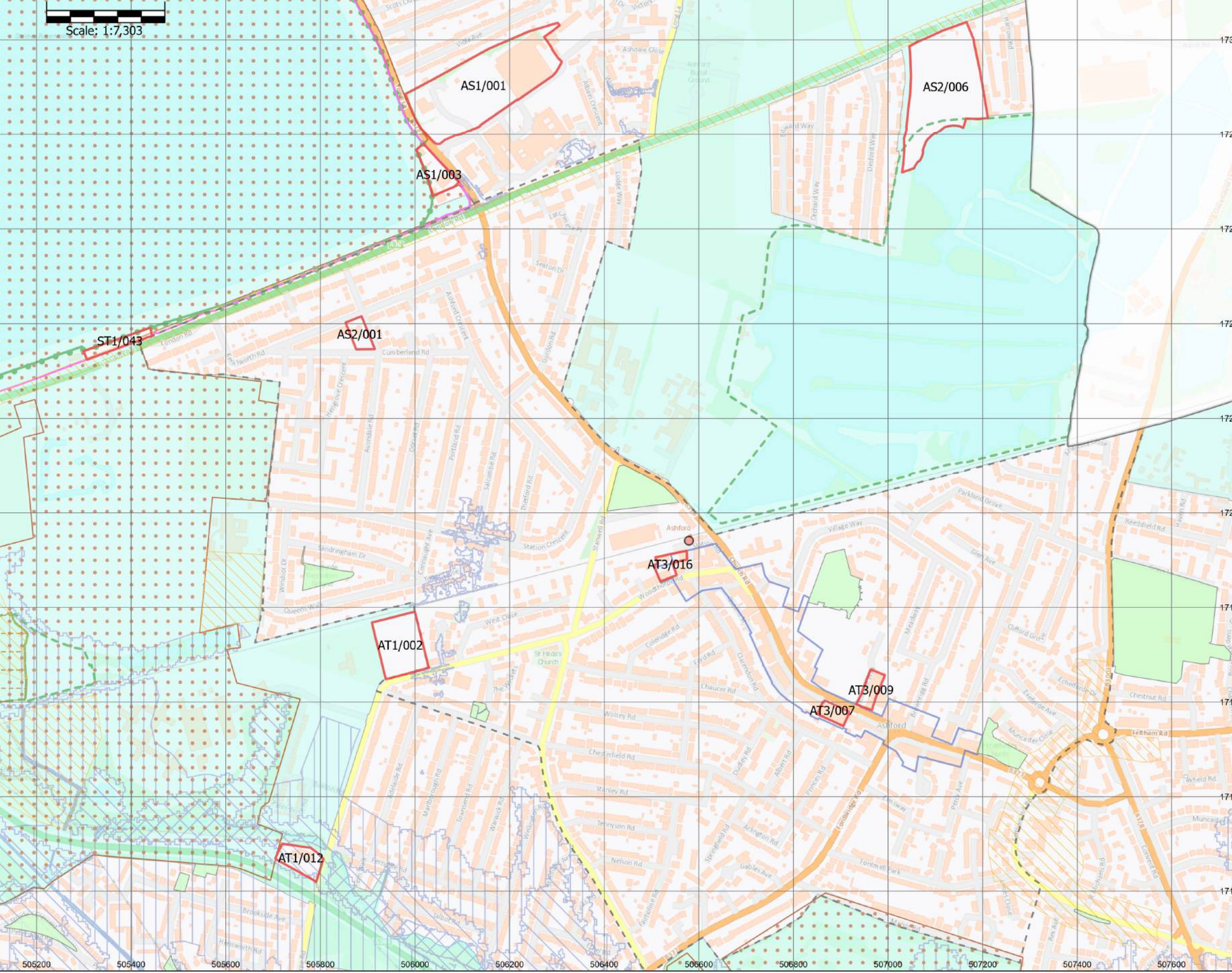
Staines Inset



Sunbury Inset



Ashford Inset



Shepperton Inset

