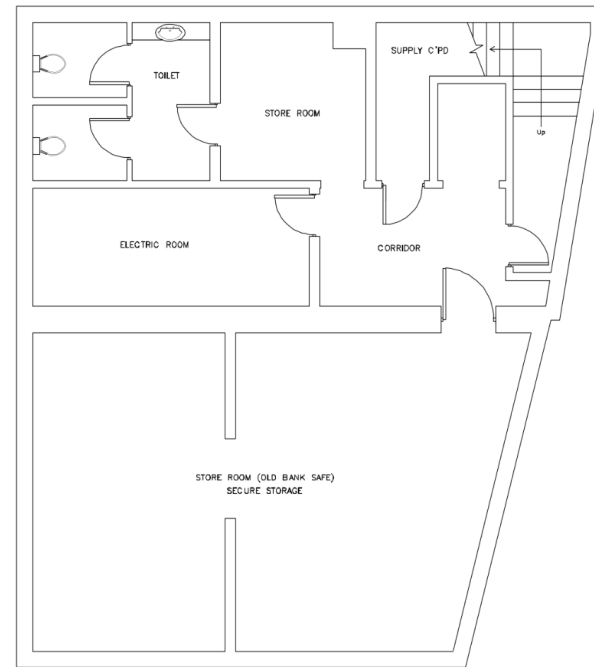


PROPOSED GROUND FLOOR PLAN

-  CCTV CAMERA
-  FIRE ALARM PANEL
-  FIRE EXTINGUISHERS
-  FIRE ALARM CALL POINT
-  SMOKE DETECTORS



PROPOSED BASEMENT PLAN

NOTES

1. THE CONTRACTOR SHALL BE RESPONSIBLE FOR OBTAINING ALL NECESSARY PERMITS AND APPROVALS FOR THE WORKS DESCRIBED IN THIS DRAWING.
2. ALL SERVICES ARE TO BE CEASED ON THE BEFORE COMMENCEMENT OF CONSTRUCTION WORK.
3. IN CASE OF EMERGENCY THE CONTRACTOR SHALL BE RESPONSIBLE FOR THE PROTECTION OF THE SERVICES AND EQUIPMENT.
4. THE CONTRACTOR SHALL BE RESPONSIBLE FOR THE PROTECTION OF THE SERVICES AND EQUIPMENT.
5. THE CONTRACTOR SHALL BE RESPONSIBLE FOR THE PROTECTION OF THE SERVICES AND EQUIPMENT.
6. THE CONTRACTOR SHALL BE RESPONSIBLE FOR THE PROTECTION OF THE SERVICES AND EQUIPMENT.
7. THE CONTRACTOR SHALL BE RESPONSIBLE FOR THE PROTECTION OF THE SERVICES AND EQUIPMENT.
8. THE CONTRACTOR SHALL BE RESPONSIBLE FOR THE PROTECTION OF THE SERVICES AND EQUIPMENT.
9. THE CONTRACTOR SHALL BE RESPONSIBLE FOR THE PROTECTION OF THE SERVICES AND EQUIPMENT.
10. THE CONTRACTOR SHALL BE RESPONSIBLE FOR THE PROTECTION OF THE SERVICES AND EQUIPMENT.

SCALE 1:50



Drawing No. 39ChurchRd/GL/25/01		Address: 39 Church Road (Basement & Ground Floor) Ashford TW15 2QF	Description: Adult Gaming Centre (AGC) Floor Plan
Scale: 1:50	Paper: A1		
Issue Date: 25/04/2025			