

# Stanwell Moor and Hithermoor Stream Walk

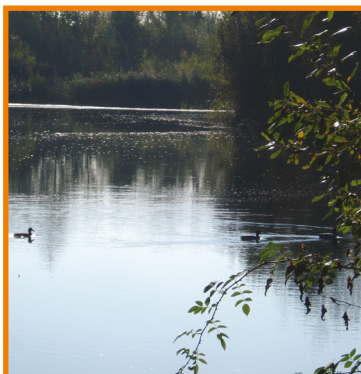
Start Point: TW19 6AQ

Distance: 1.5 miles

1. Start the walk at The Anchor Pub at the junction of Horton Road and Hithermoor Road.
2. With the pub entrance behind you head straight down Horton Road, past Vine close on your left and Spout Lane on your right.
3. Cross the road at Flintock Close (this is the best view for crossing).
4. Pass a large old building on your right (Old Mill) passing over the stream.
5. Follow the road around the bend and continue straight on.
6. Take the public footpath/track on the left.
7. At the end of the track, turn left through the kissing gate (proceed with caution as vehicles occasionally use this road) walk down the road and pass the caravan site on your left.
8. Cross over the stream and turn right through the gate.
9. Continue to follow the footpath.
10. When you reach the concrete road bear left.
11. At the end of the concrete path turn left onto Hithermoor Road.
12. Follow the road round to the right back to the start.



4. Old Mill



9. Hithermoor Lake



9. Hithermoor Lake

If you are interested in finding out about history in Spelthorne visit [www.spelthornemuseum.org.uk](http://www.spelthornemuseum.org.uk)

Please note that we recommend you always walk with a friend as there are isolated areas on most of the walks. You should always carry a mobile phone in case you need help and make sure you stay well hydrated. Always check with your GP before undertaking a new exercise programme.

